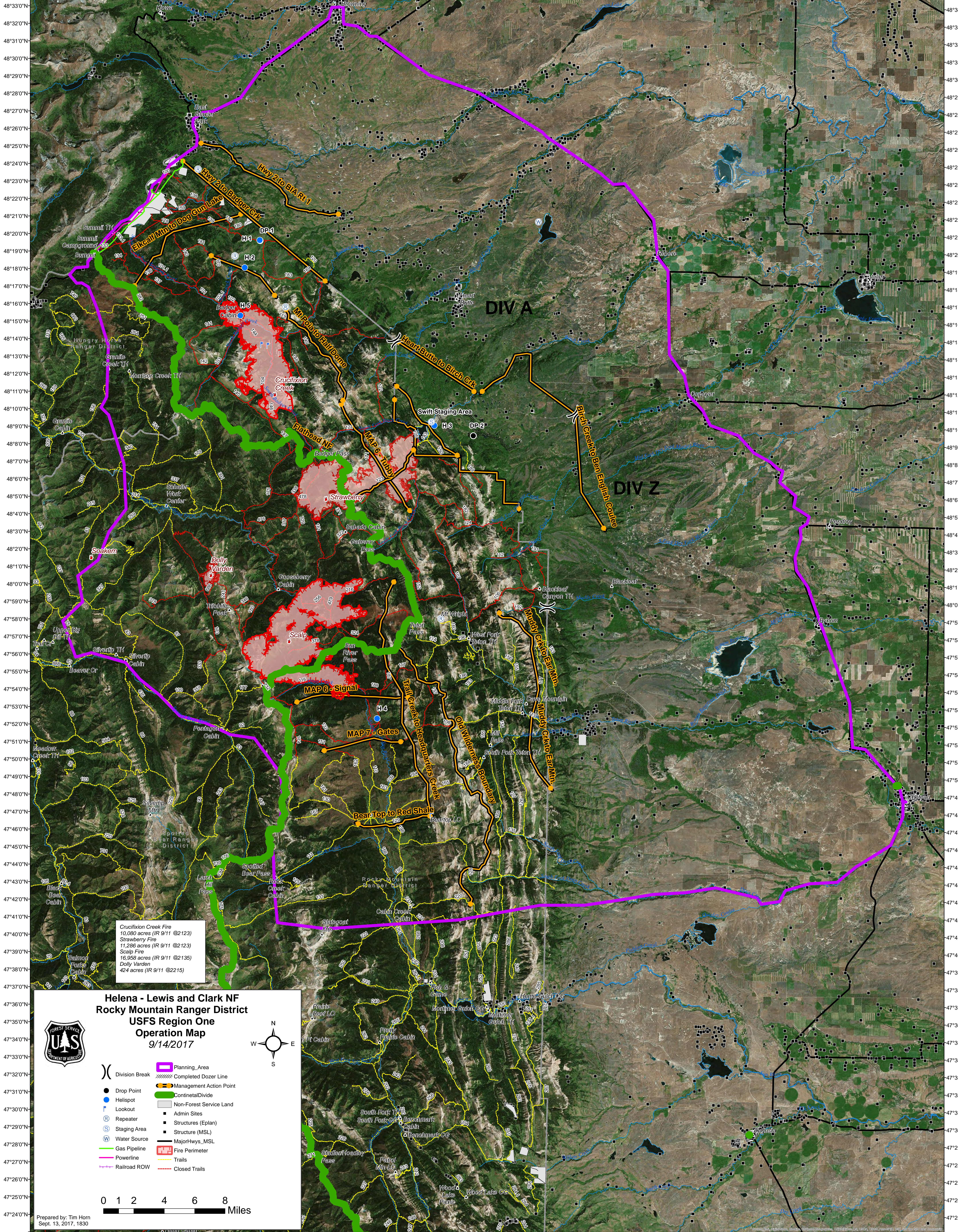


113°27'0"W 113°24'0"W 113°21'0"W 113°18'0"W 113°15'0"W 113°12'0"W 113°9'0"W 113°6'0"W 113°3'0"W 113°0'0"W 112°57'0"W 112°54'0"W 112°51'0"W 112°48'0"W 112°45'0"W 112°42'0"W 112°39'0"W 112°36'0"W 112°33'0"W 112°30'0"W 112°27'0"W 112°24'0"W 112°21'0"W 112°18'0"W 112°15'0"W 112°12'0"W 112°9'0"W



Crucifixion Creek Fire
10,080 acres (IR 9/11 @2123)
Strawberry Fire
11,286 acres (IR 9/11 @2123)
Scalp Fire
16,039 acres (IR 9/11 @2135)
Dolly Varden
424 acres (IR 9/11 @2215)

Helena - Lewis and Clark NF Rocky Mountain Ranger District USFS Region One Operation Map 9/14/2017



- () Division Break
- Drop Point
- Helispot
- ⌘ Lookout
- Ⓡ Repeater
- Ⓢ Staging Area
- Ⓜ Water Source
- Ⓜ Gas Pipeline
- Ⓜ Powerline
- Ⓜ Railroad ROW
- Ⓜ Planning Area
- Ⓜ Completed Dozer Line
- Ⓜ Management Action Point
- Ⓜ Continental Divide
- Ⓜ Non-Forest Service Land
- Ⓜ Admin Sites
- Ⓜ Structures (Eplan)
- Ⓜ Structure (MSL)
- Ⓜ Major Hwys. MSL
- Ⓜ Fire Perimeter
- Ⓜ Trails
- Ⓜ Closed Trails



Prepared by: Tim Horn
Sept. 13, 2017, 1830

113°24'0"W 113°21'0"W 113°18'0"W 113°15'0"W 113°12'0"W 113°9'0"W 113°6'0"W 113°3'0"W 113°0'0"W 112°57'0"W 112°54'0"W 112°51'0"W 112°48'0"W 112°45'0"W 112°42'0"W 112°39'0"W 112°36'0"W 112°33'0"W 112°30'0"W 112°27'0"W 112°24'0"W 112°21'0"W 112°18'0"W 112°15'0"W 112°12'0"W 112°9'0"W