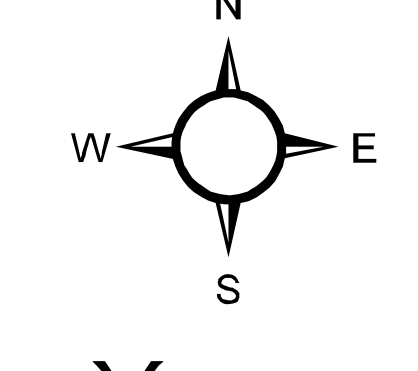


113°7'0"W 113°5'0"W 113°3'0"W 113°1'0"W 112°59'0"W 112°57'0"W 112°55'0"W 112°53'0"W 112°51'0"W 112°49'0"W 112°47'0"W 112°45'0"W 112°43'0"W 112°41'0"W 112°39'0"W 112°37'0"W 112°35'0"W 112°33'0"W 112°31'0"W 112°29'0"W 112°27'0"W 112°25'0"W 112°23'0"W 112°21'0"W

Crucifixion Creek Fire 11,003 acres (Digitized 9/14 @ 1600)
 Strawberry Fire 30,461 acres (Digitized 9/14 @ 1030)
 Scale Fire 20,406 acres (IR 9/14 @ 1600)
 Dolly Varden 424 acres (IR 9/11 @ 2135)

Type	ID	Latitude	Longitude
Drop Point	DP-1	-113° 7.140'	48° 19.987'
Drop Point	DP-2	-112° 48.480'	48° 9.158'
Helispot	H-1	-113° 7.173'	48° 20.012'
Helispot	H-2	-113° 8.386'	48° 18.423'
Helispot	H-3	-112° 51.826'	48° 9.688'
Helispot	H-4	-112° 55.941'	47° 52.865'
Helispot	H-5	-113° 8.809'	48° 15.668'
Staging Area	Swift Staging Area	<Null>	<Null>



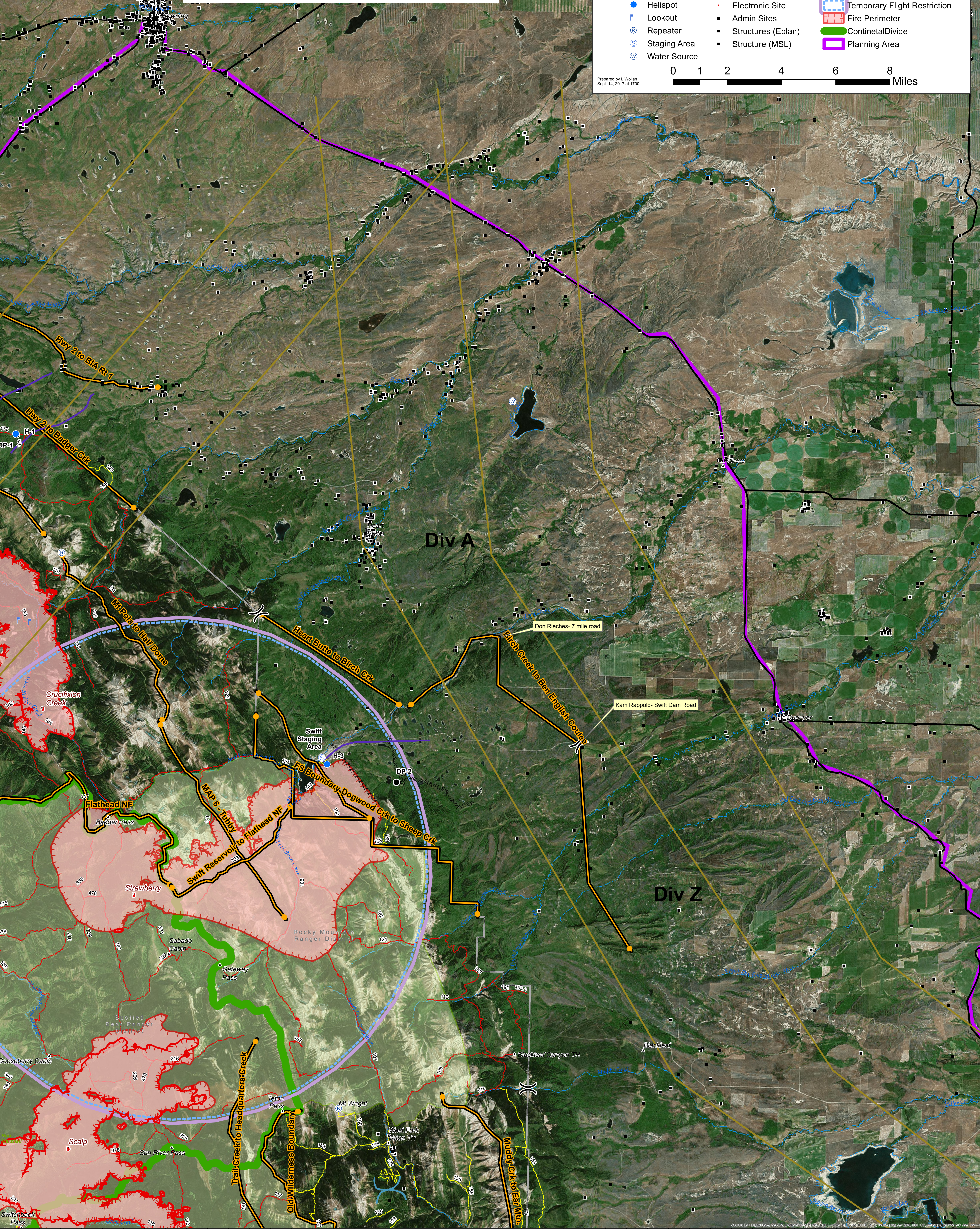
Helena - Lewis and Clark NF
Rocky Mountain Ranger District
USFS Region One
Air Ops Map 9/15/2017



() Division Break	— Military Training Route	— MajorHwys_MSL
● Drop Point	— Power or Phone Line	----- Completed Dozer Line
● Helispot	— Ski Area	— Management Action Point
Ⓡ Lookout	• Electronic Site	Ⓡ Temporary Flight Restriction
Ⓡ Repeater	■ Admin Sites	■ Fire Perimeter
Ⓢ Staging Area	■ Structures (Eplan)	■ ContinentalDivide
Ⓜ Water Source	■ Structure (MSL)	■ Planning Area

0 1 2 4 6 8 Miles

Prepared by L. Wolan
 Sept. 14, 2017 at 1700



113°7'0"W 113°5'0"W 113°3'0"W 113°1'0"W 112°59'0"W 112°57'0"W 112°55'0"W 112°53'0"W 112°51'0"W 112°49'0"W 112°47'0"W 112°45'0"W 112°43'0"W 112°41'0"W 112°39'0"W 112°37'0"W 112°35'0"W 112°33'0"W 112°31'0"W 112°29'0"W 112°27'0"W 112°25'0"W 112°23'0"W 112°21'0"W