
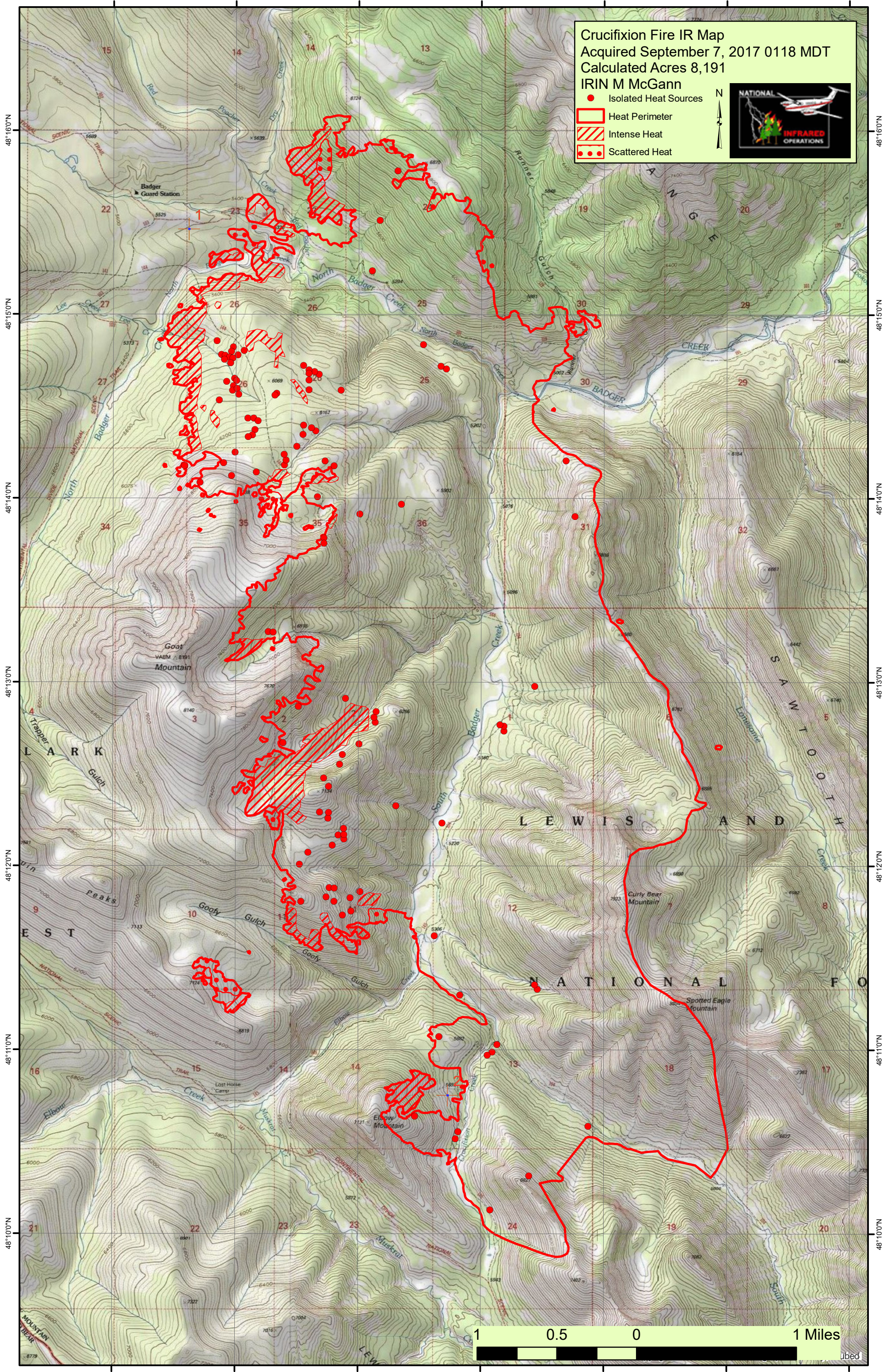


113°9'0"W 113°8'0"W 113°7'0"W 113°6'0"W 113°5'0"W 113°4'0"W 113°3'0"W

**Crucifixion Fire IR Map**  
 Acquired September 7, 2017 0118 MDT  
 Calculated Acres 8,191  
 IRIN M McGann

- Isolated Heat Sources
- ▭ Heat Perimeter
- ▨ Intense Heat
- Scattered Heat

48°16'0"N  
48°15'0"N  
48°14'0"N  
48°13'0"N  
48°12'0"N  
48°11'0"N  
48°10'0"N

48°16'0"N  
48°15'0"N  
48°14'0"N  
48°13'0"N  
48°12'0"N  
48°11'0"N  
48°10'0"N

1 0.5 0 1 Miles

113°9'0"W 113°8'0"W 113°7'0"W 113°6'0"W 113°5'0"W 113°4'0"W 113°3'0"W