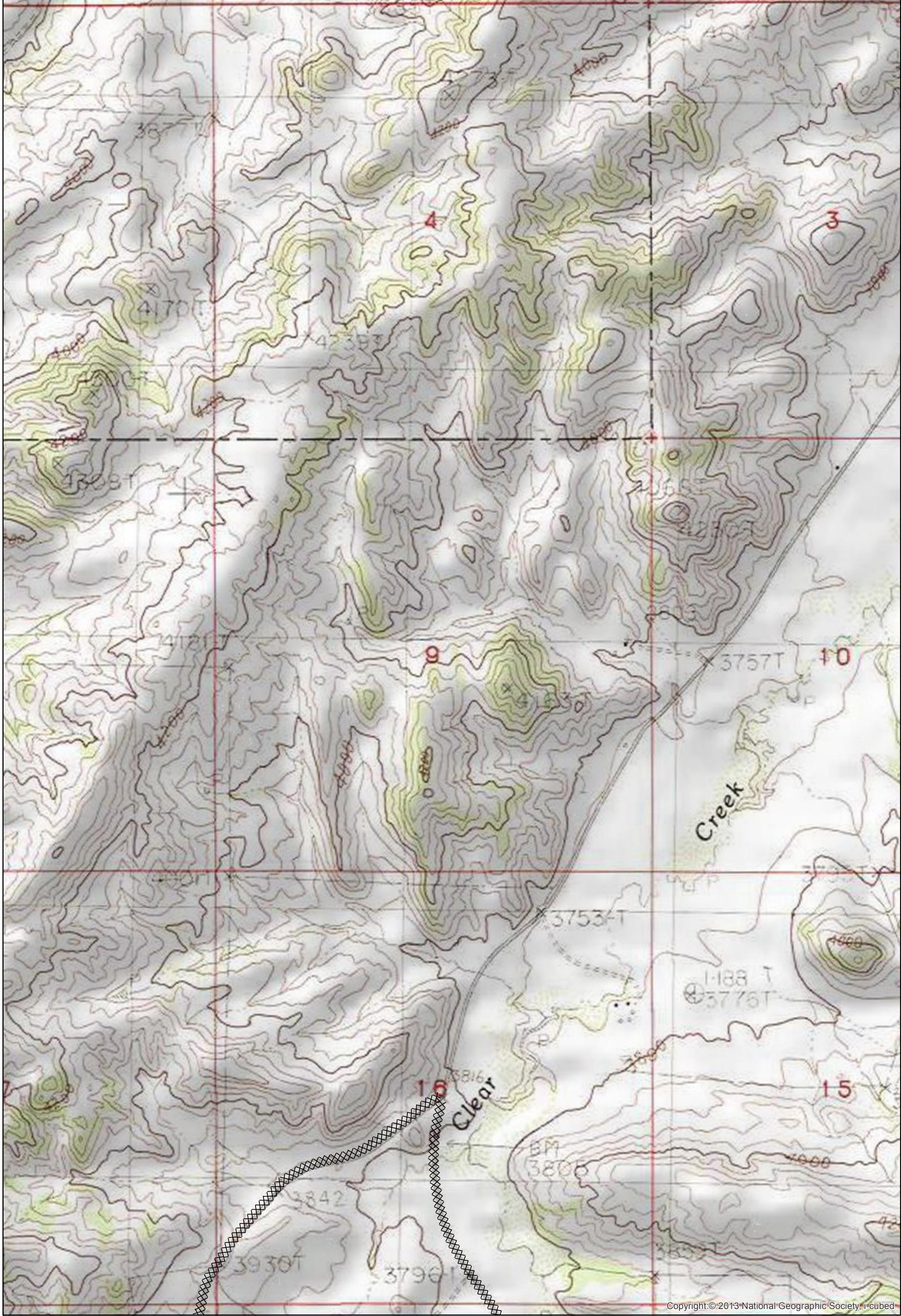


Copyright © 2013 National Geographic Society, i-cubed

Dozer Line Index
Blaine County
 East Fork
 9/7/2017 0700
 21,518 Acres





Dozer Line Index

East Fork
9/7/2017 0700
21,518 Acres
Page: 1



- Drop Point
- Helispot
- ▣ Incident Command Post
- Ⓢ Staging Area
- Ⓜ Water Source

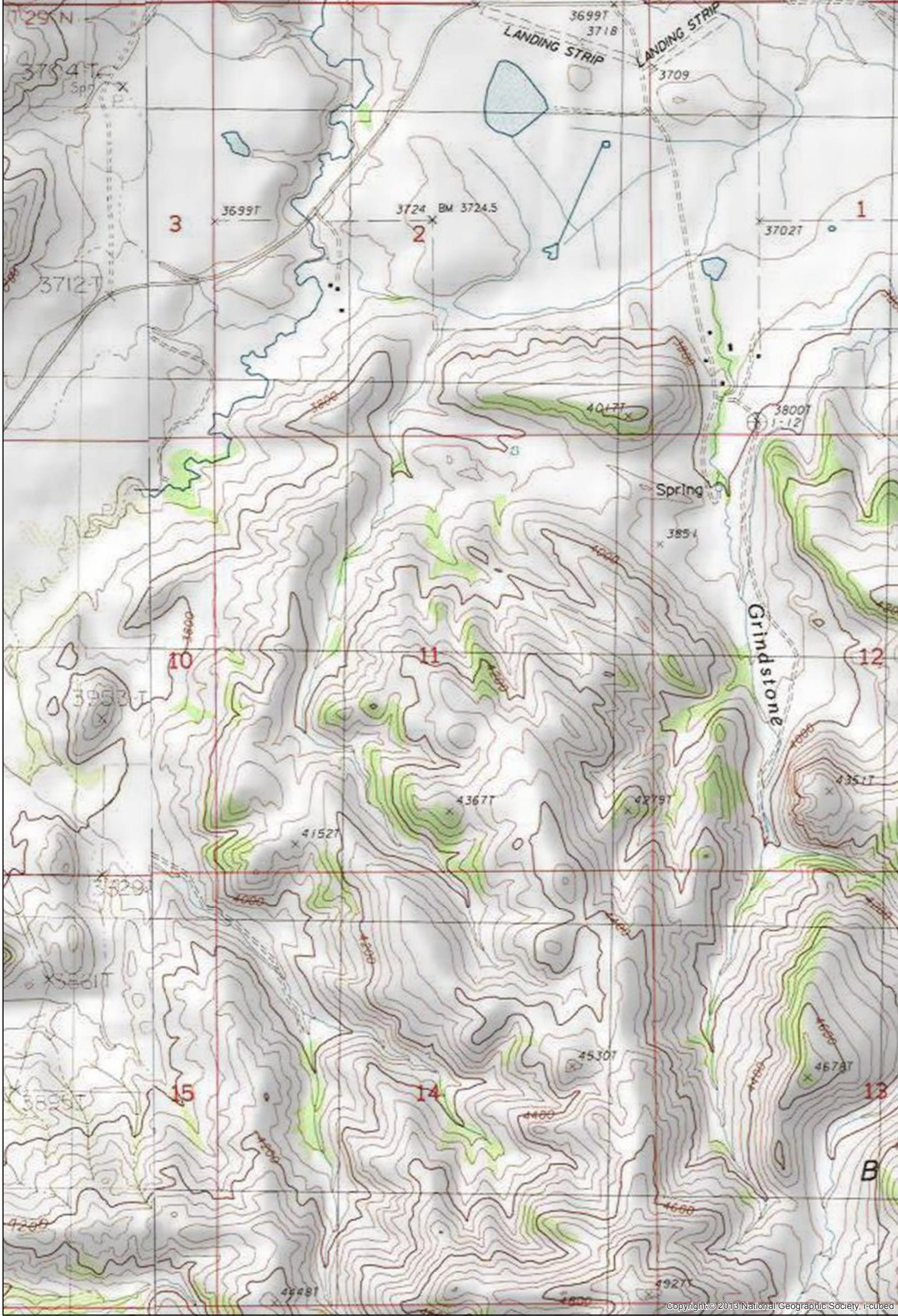
- ⌋ Division Break
- ⚙ Sling Site
- Ⓡ Repeater

- ▬ Uncontrolled Fire Edge
- ▬ Completed Line
- ▭ County boundary
- ▭ Rocky Boy Reservation



0 0.1 0.2 Miles

Map created Sept 6, 2017 1930 hrs
NAD83 UTM Zone 12N



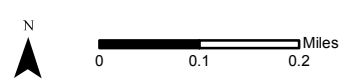
Copyright © 2013 National Geographic Society, i-cubed

Dozer Line Index

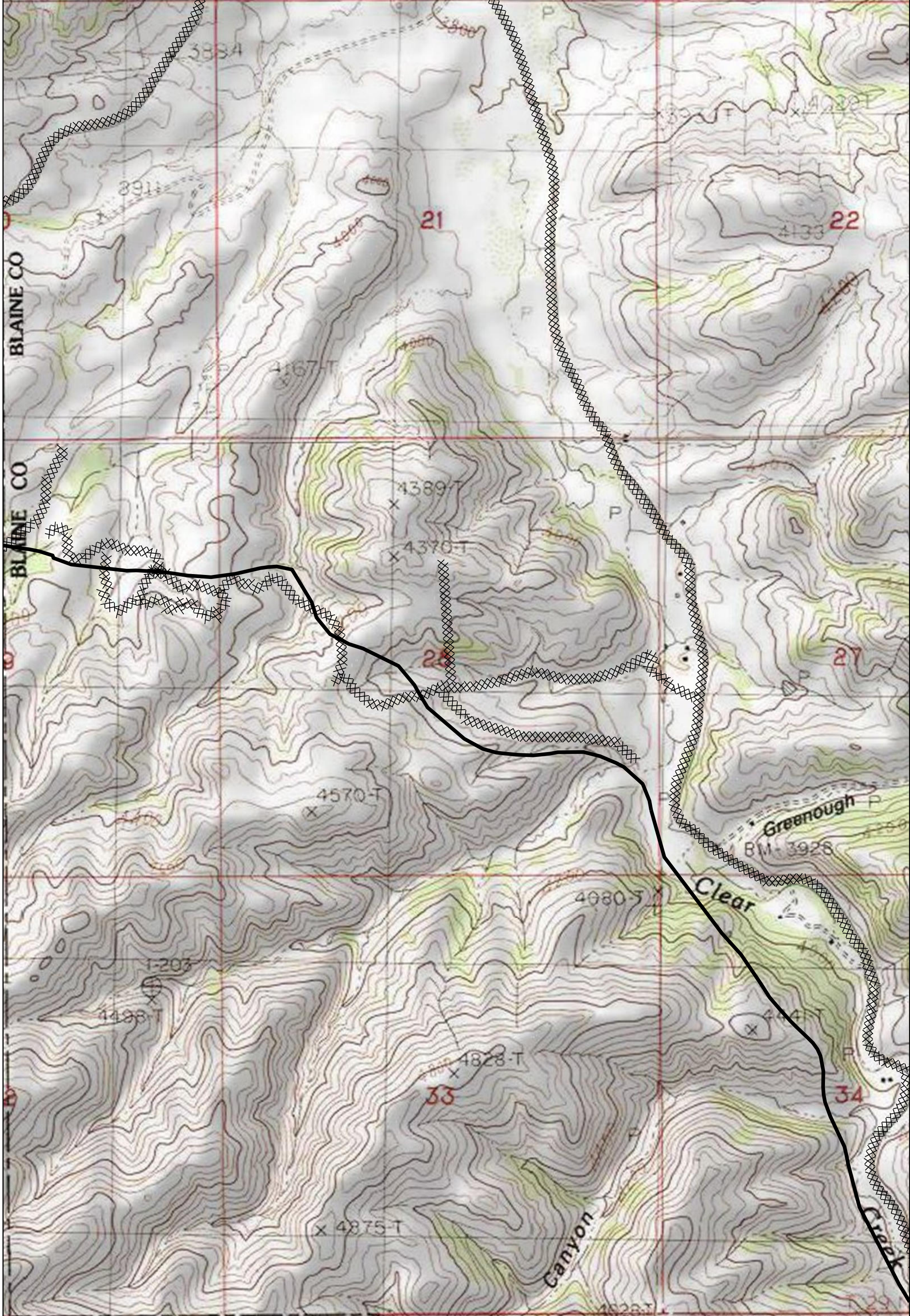
East Fork
9/7/2017 0700
21,518 Acres
Page: 2



- Drop Point
- Helispot
- ▣ Incident Command Post
- ⊙ Staging Area
- ⊙ Water Source
- ⌋ Division Break
- ⚙ Sling Site
- Ⓡ Repeater
- ▬ Uncontrolled Fire Edge
- ▬ Completed Line
- ▭ County boundary
- ▭ Rocky Boy Reservation



Map created Sept 6, 2017 1930 hrs
NAD83 UTM Zone 12N



Copyright © 2013 National Geographic Society, i-cubed

Dozer Line Index

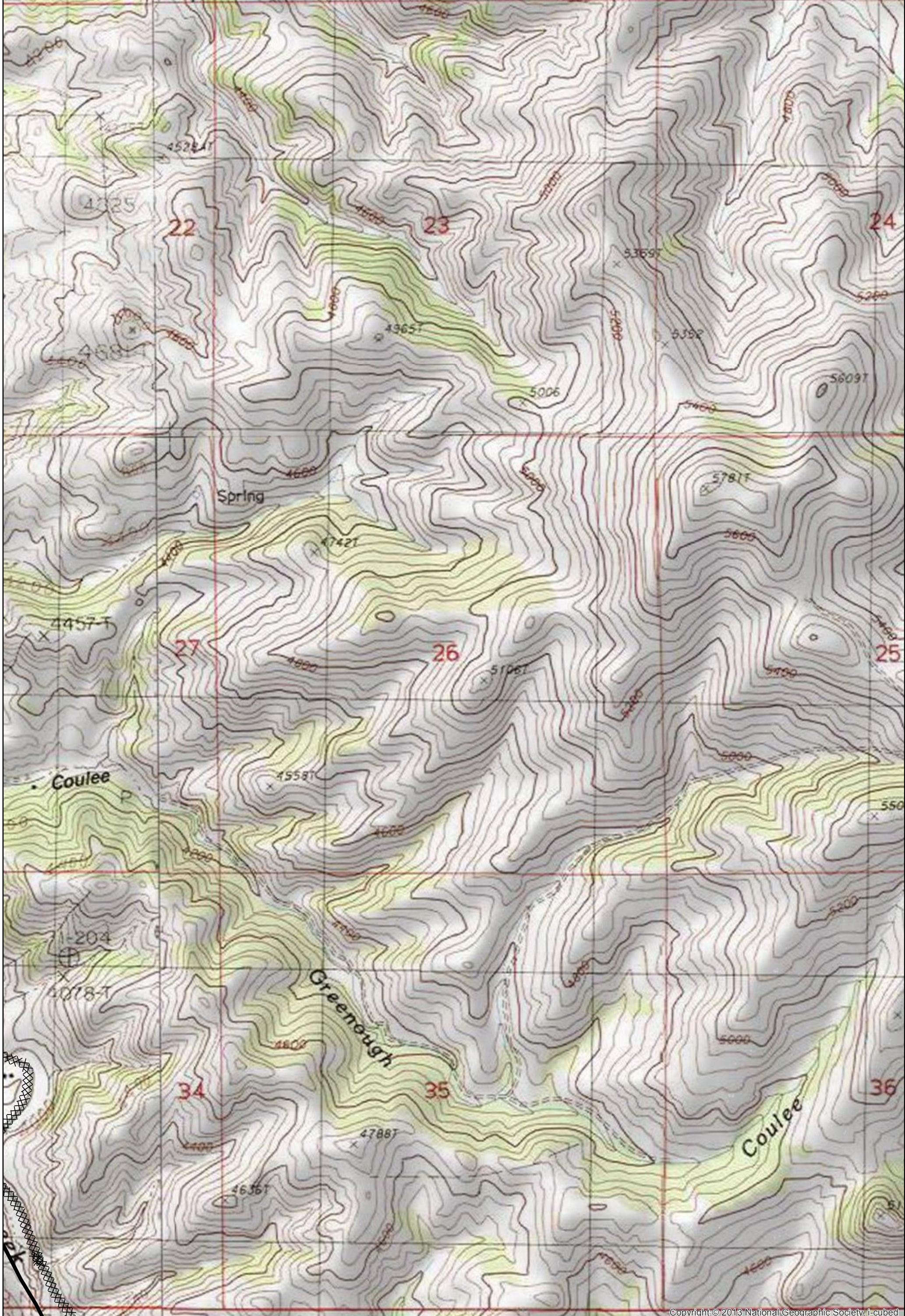
East Fork
9/7/2017 0700
21,518 Acres
Page: 3



- Drop Point
- Helispot
- ▣ Incident Command Post
- Ⓢ Staging Area
- Ⓜ Water Source
- ⌋ Division Break
- ⚙ Sling Site
- Ⓡ Repeater
- ▬ Uncontrolled Fire Edge
- ▬ Completed Line
- ▭ County boundary
- ▭ Rocky Boy Reservation



0 0.1 0.2 Miles
Map created Sept 6, 2017 1930 hrs
NAD83 UTM Zone 12N



Copyright © 2013 National Geographic Society, i-cubed

Dozer Line Index

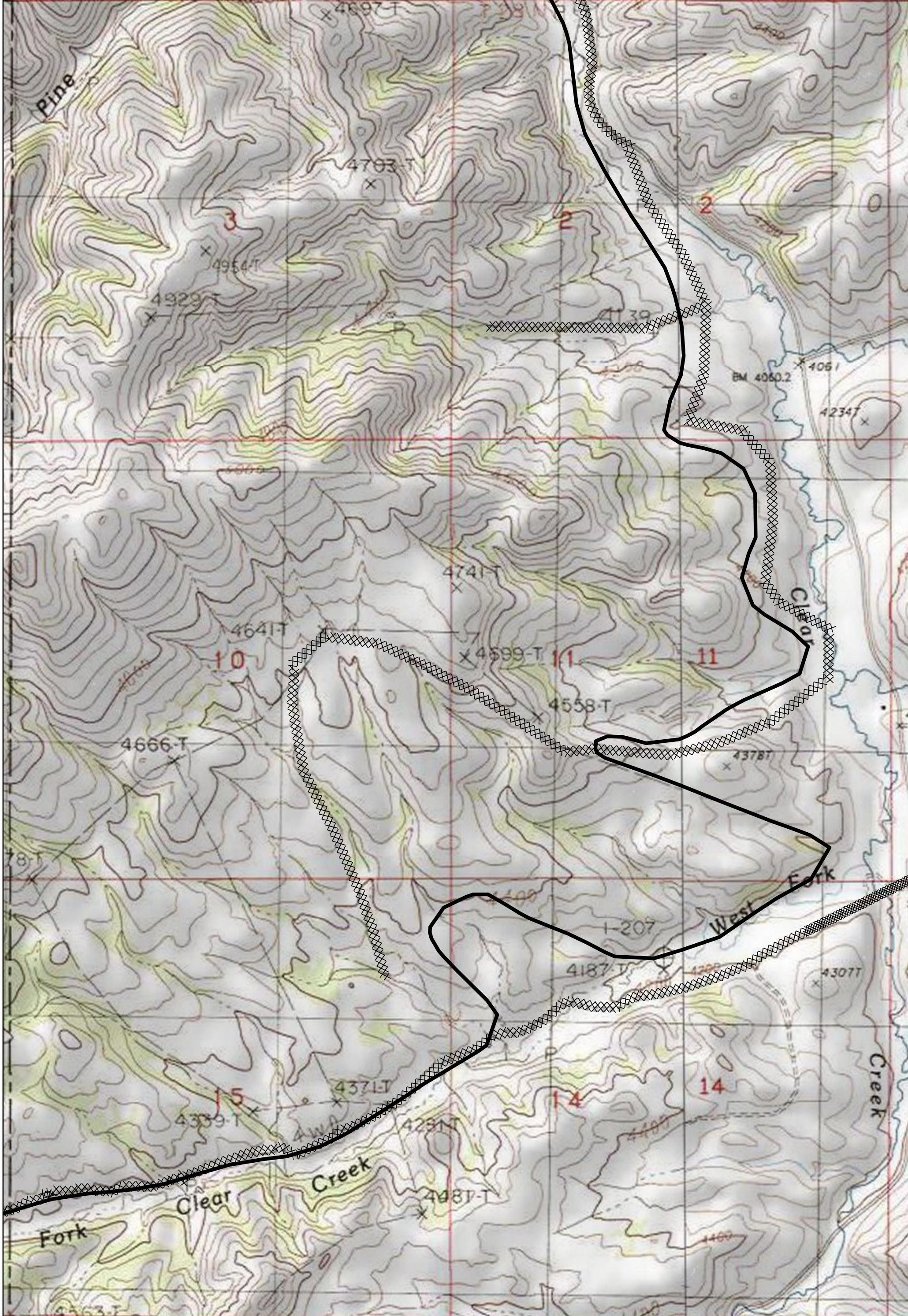
East Fork
9/7/2017 0700
21,518 Acres
Page: 4



- Drop Point
- Helispot
- ▣ Incident Command Post
- Ⓢ Staging Area
- Ⓜ Water Source
- ⎵ Division Break
- ⚙ Sling Site
- Ⓡ Repeater
- ▬ Uncontrolled Fire Edge
- ▬ Completed Line
- ▭ County boundary
- ▭ Rocky Boy Reservation



0 0.1 0.2 Miles
Map created Sept 6, 2017 1930 hrs
NAD83 UTM Zone 12N



Copyright © 2013 National Geographic Society, i-cubed

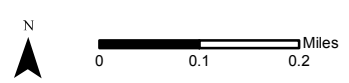
Dozer Line Index

East Fork
 9/7/2017 0700
 21,518 Acres
 Page: 5

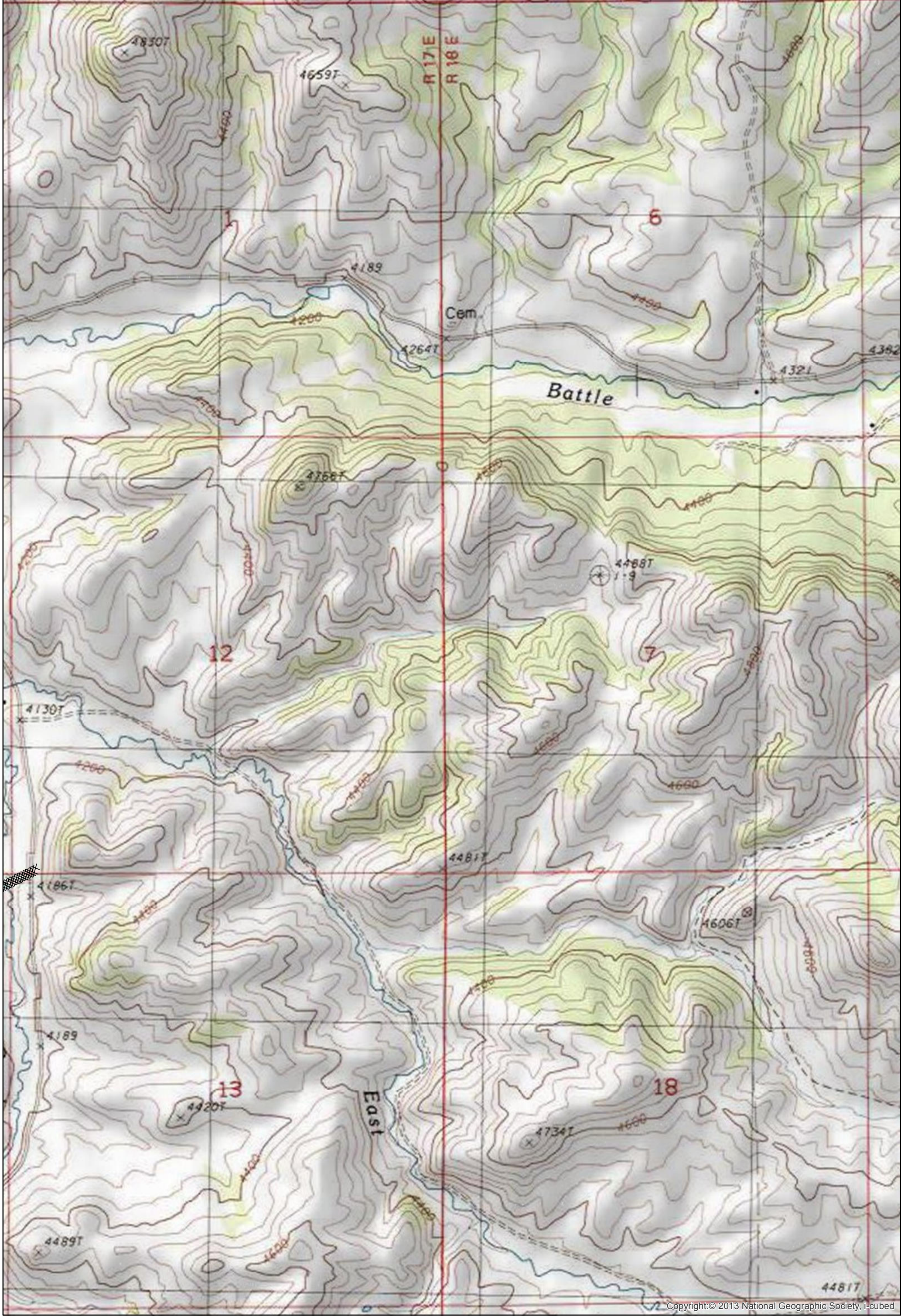


- Drop Point
- Helispot
- ▣ Incident Command Post
- ⊙ Staging Area
- ⊙ Water Source
-) Division Break
- ⊙ Sling Site
- ⊙ Repeater

- ▬ Uncontrolled Fire Edge
- ▬ Completed Line
- ▭ County boundary
- ▭ Rocky Boy Reservation



Map created Sept 6, 2017 1930 hrs
 NAD83 UTM Zone 12N



Dozer Line Index

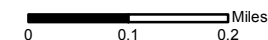
East Fork
 9/7/2017 0700
 21,518 Acres
 Page: 6



- Drop Point
- Helispot
- ▣ Incident Command Post
- ⊙ Staging Area
- ⊕ Water Source

- ⌋ Division Break
- ⚙ Sling Site
- Ⓜ Repeater

- ▬ Uncontrolled Fire Edge
- ▬ Completed Line
- ▭ County boundary
- ▭ Rocky Boy Reservation



Map created Sept 6, 2017 1930 hrs
 NAD83 UTM Zone 12N



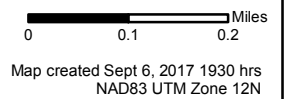
Copyright © 2013 National Geographic Society, i-cubed

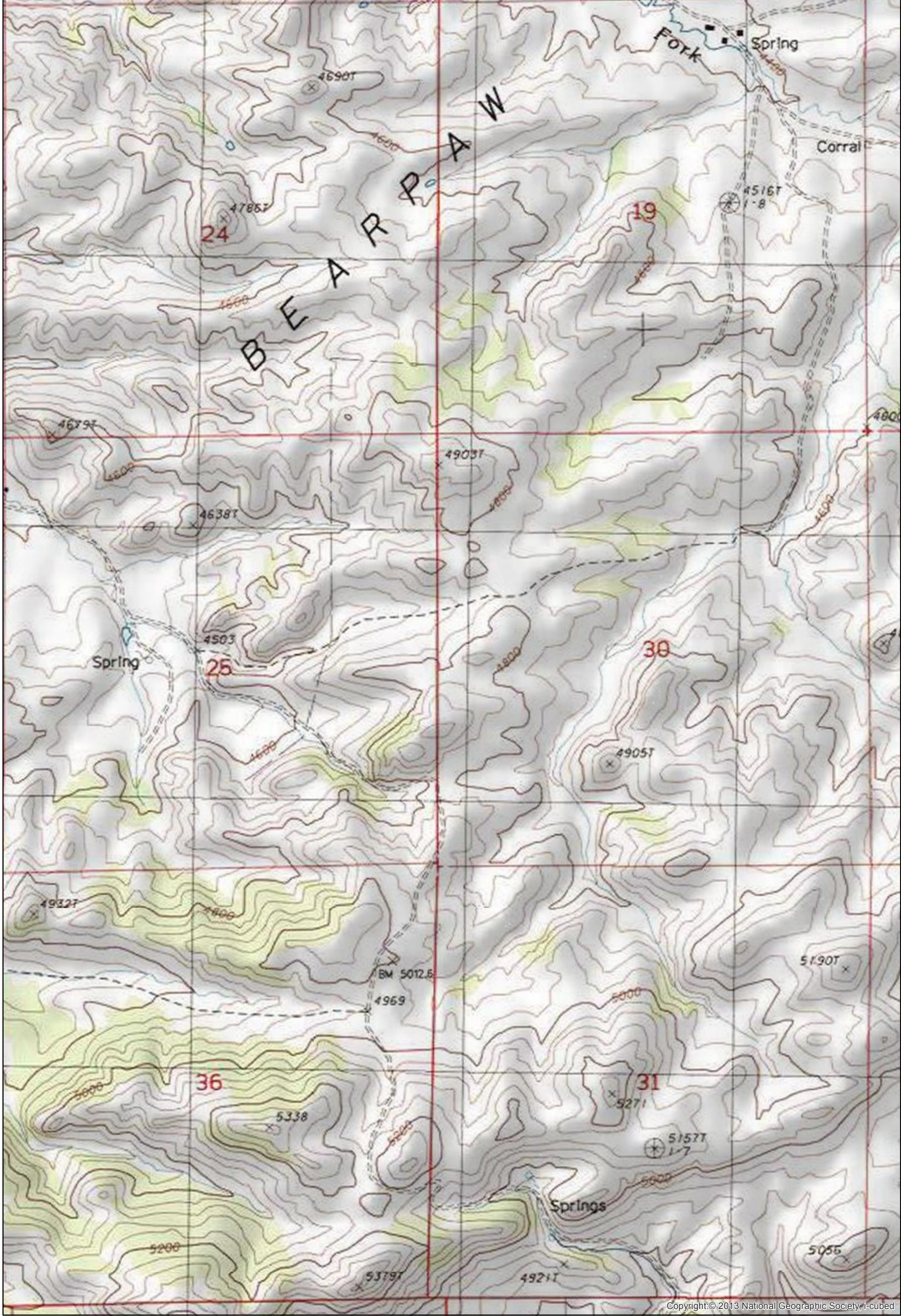
Dozer Line Index

East Fork
9/7/2017 0700
21,518 Acres
Page: 7



- Drop Point
- Helispot
- ▣ Incident Command Post
- ⊙ Staging Area
- ⊙ Water Source
- ⌋ Division Break
- ⊙ Sling Site
- ⊙ Repeater
- ▬ Uncontrolled Fire Edge
- ▬ Completed Line
- ▭ County boundary
- ▭ Rocky Boy Reservation





Copyright © 2013 National Geographic Society, i-cubed

Dozer Line Index

East Fork
9/7/2017 0700
21,518 Acres
Page: 8



- Drop Point
- Helispot
- ▣ Incident Command Post
- ⊙ Staging Area
- ⊙ Water Source

- ⌋ Division Break
- ⊙ Sling Site
- ⊙ Repeater

- ▬ Uncontrolled Fire Edge
- ▬ Completed Line
- ▭ County boundary
- ▭ Rocky Boy Reservation



0 0.1 0.2 Miles
Map created Sept 6, 2017 1930 hrs
NAD83 UTM Zone 12N