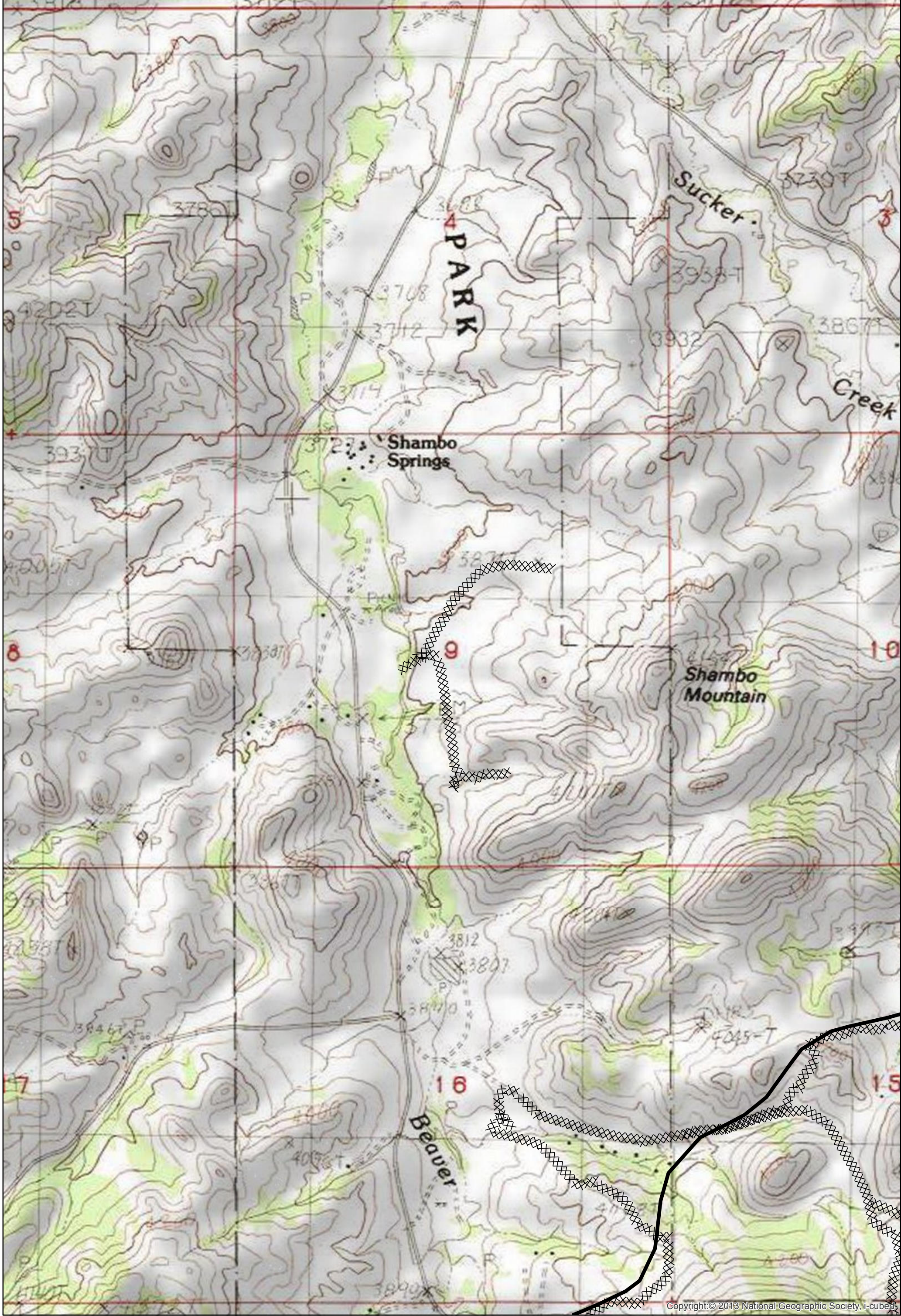


Copyright © 2013 National Geographic Society, i-cubed

**Dozer Line Index  
Hill County**

East Fork  
9/7/2017 0700  
21,518 Acres





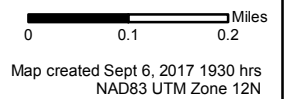
Copyright © 2013 National Geographic Society, i-cubed

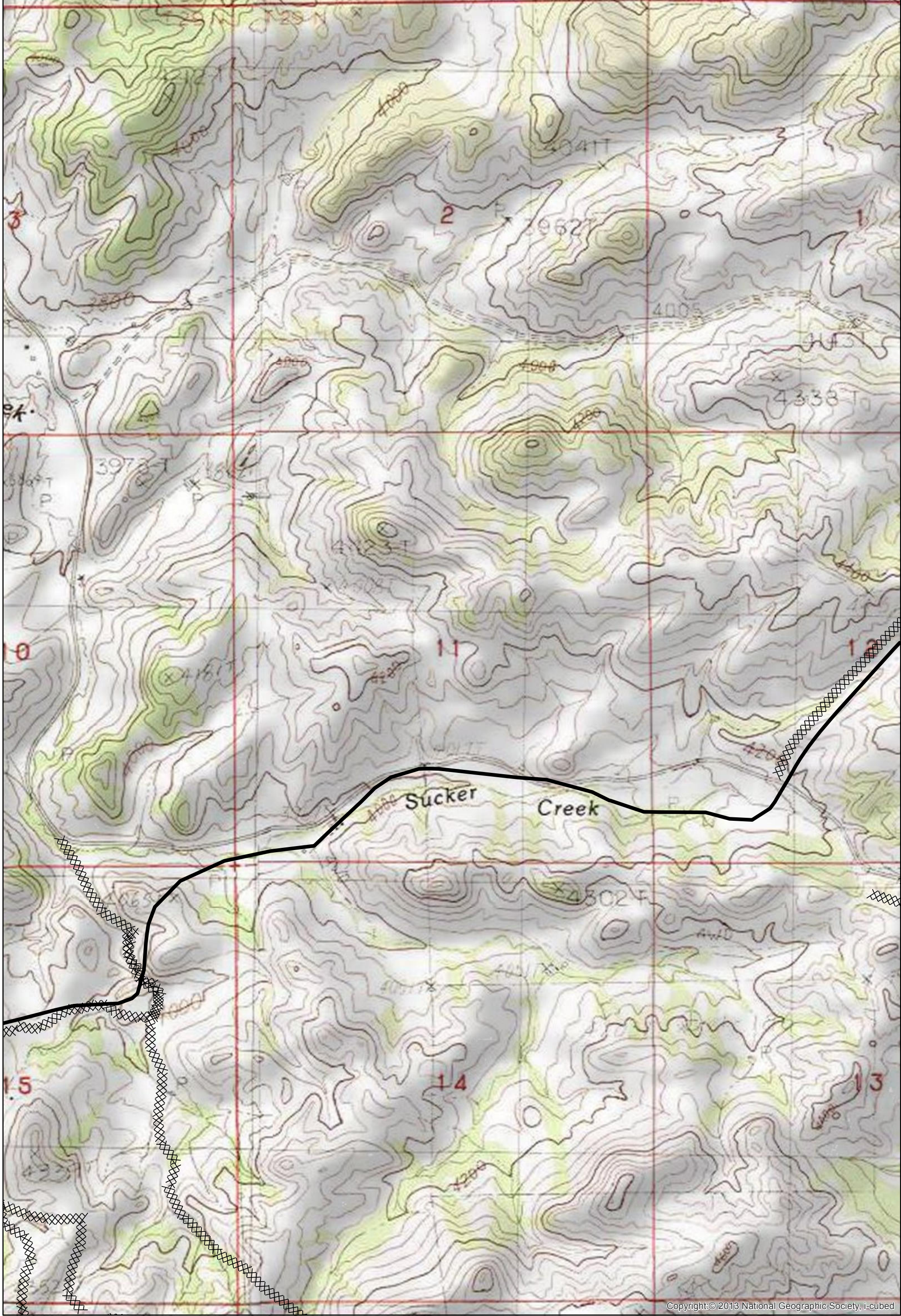
**Dozer Line Index**

East Fork  
9/7/2017 0700  
21,518 Acres  
Page: 1



- Drop Point
- Helispot
- ▣ Incident Command Post
- ⊙ Staging Area
- ⊙ Water Source
- ⌋ Division Break
- ⊙ Sling Site
- ⊙ Repeater
- ▬ Uncontrolled Fire Edge
- ▬ Completed Line
- ▭ County boundary
- ▭ Rocky Boy Reservation





Copyright:© 2013 National Geographic Society, i-cubed

**Dozer Line Index**

East Fork  
9/7/2017 0700  
21,518 Acres  
Page: 2



- Drop Point
- Helispot
- ▣ Incident Command Post
- Ⓢ Staging Area
- Ⓜ Water Source
- ⌋ Division Break
- ⚙ Sling Site
- Ⓡ Repeater
- ▬ Uncontrolled Fire Edge
- ▬ Completed Line
- ▭ County boundary
- ▭ Rocky Boy Reservation



0 0.1 0.2 Miles  
Map created Sept 6, 2017 1930 hrs  
NAD83 UTM Zone 12N



Copyright © 2013 National Geographic Society, i-cubed

**Dozer Line Index**

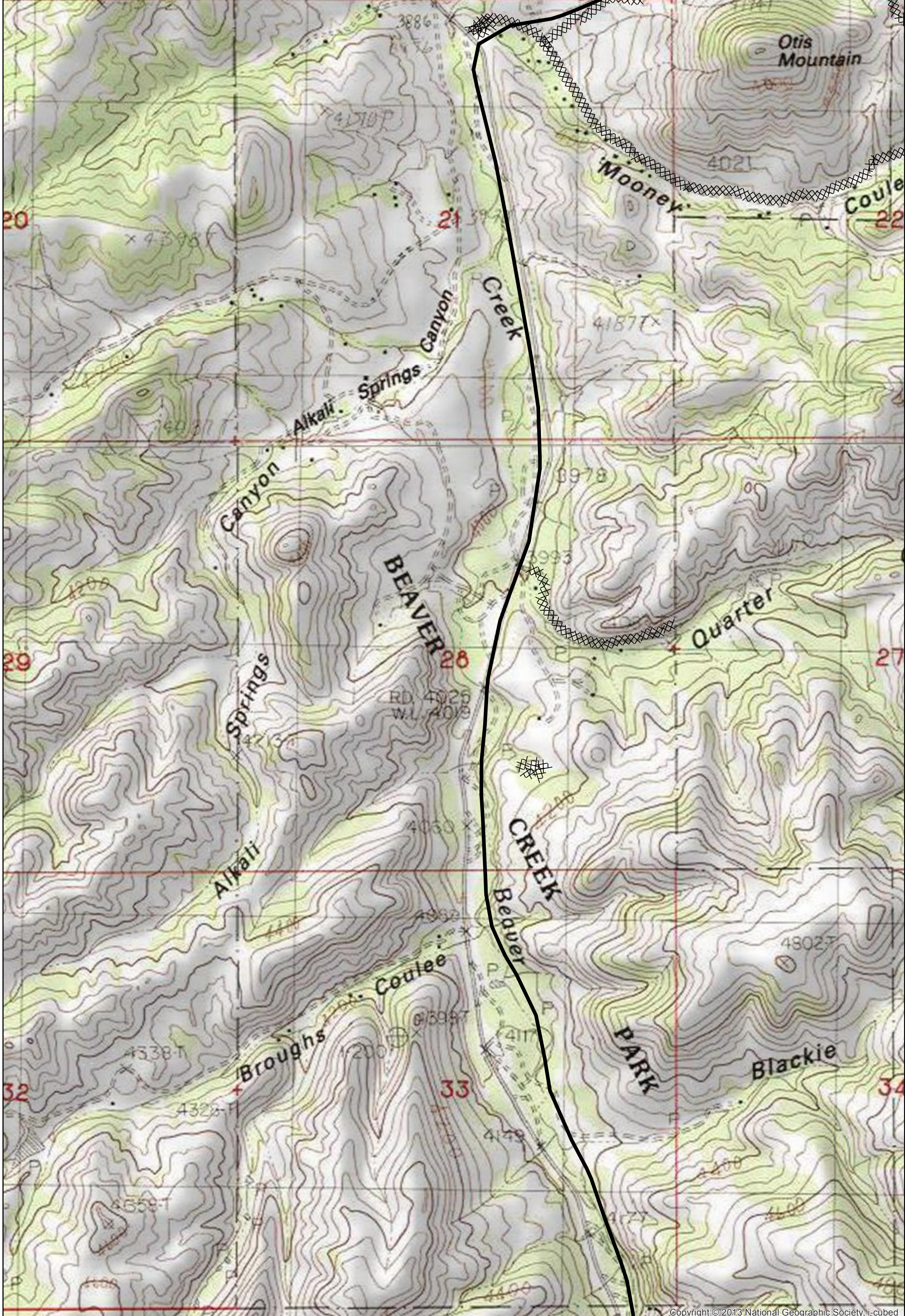
East Fork  
9/7/2017 0700  
21,518 Acres  
Page: 3



- Drop Point
- Helispot
- ▣ Incident Command Post
- Ⓢ Staging Area
- Ⓜ Water Source
- ⌋ Division Break
- ⚙ Sling Site
- Ⓡ Repeater
- ▬ Uncontrolled Fire Edge
- ▬ Completed Line
- ▭ County boundary
- ▭ Rocky Boy Reservation



0 0.1 0.2 Miles  
Map created Sept 6, 2017 1930 hrs  
NAD83 UTM Zone 12N



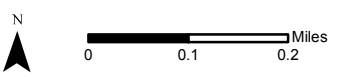
Copyright © 2013 National Geographic Society, i-cubed

**Dozer Line Index**

East Fork  
9/7/2017 0700  
21,518 Acres  
Page: 4



- Drop Point
- Helispot
- ▣ Incident Command Post
- ⊙ Staging Area
- ⊕ Water Source
- ⌋ Division Break
- ⚙ Sling Site
- Ⓡ Repeater
- ▬ Uncontrolled Fire Edge
- ▬ Completed Line
- ▭ County boundary
- ▭ Rocky Boy Reservation



Map created Sept 6, 2017 1930 hrs  
NAD83 UTM Zone 12N

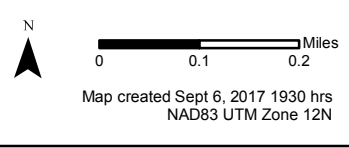


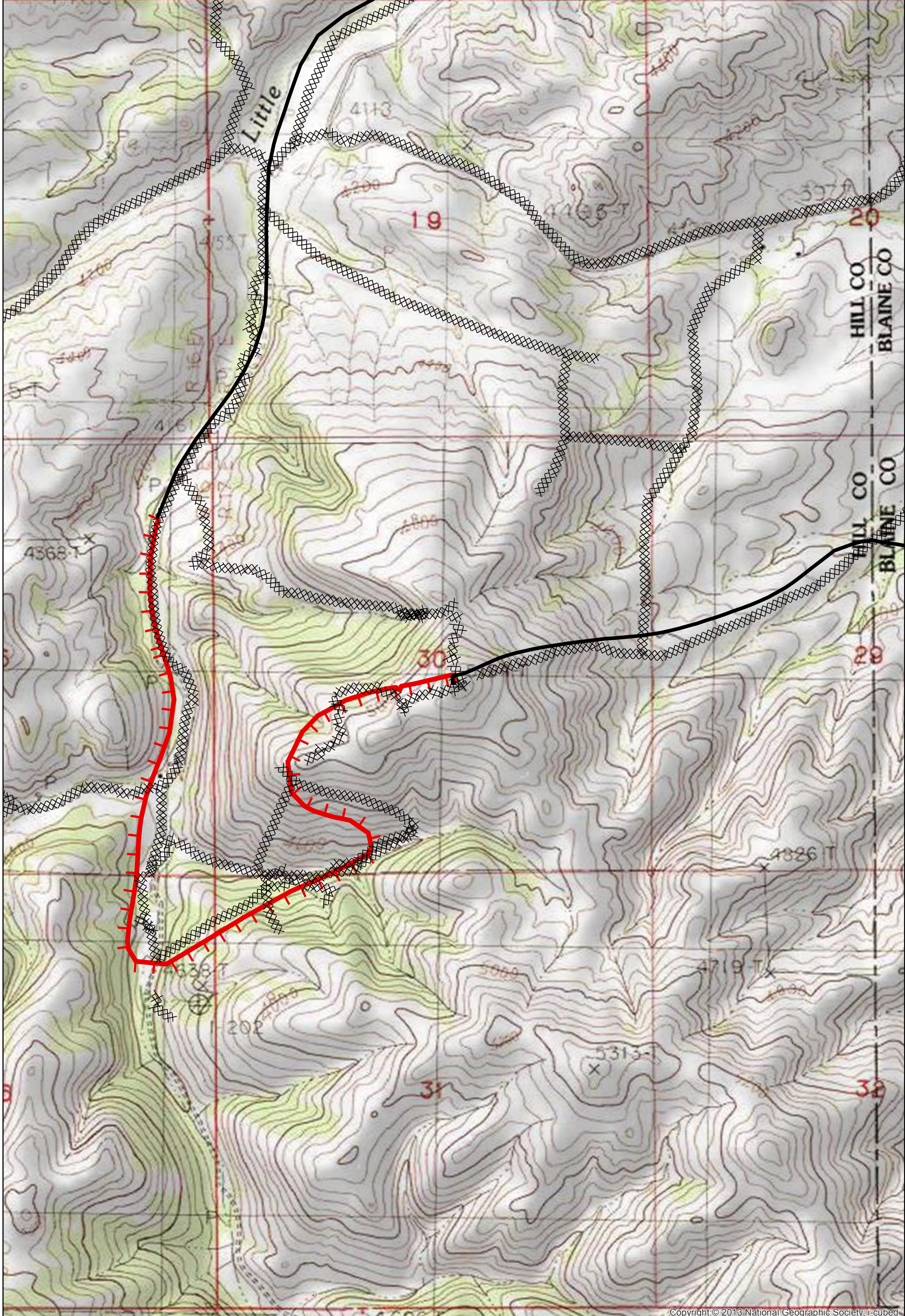
Copyright © 2013 National Geographic Society, i-cubed

**Dozer Line Index**  
 East Fork  
 9/7/2017 0700  
 21,518 Acres  
 Page: 5



- Drop Point
- Helispot
- Incident Command Post
- Ⓢ Staging Area
- Ⓜ Water Source
- ⌘ Division Break
- ▲ Sling Site
- Ⓡ Repeater
- Uncontrolled Fire Edge
- Completed Line
- - - County boundary
- Rocky Boy Reservation





Copyright © 2013 National Geographic Society, i-cubed

**Dozer Line Index**

East Fork  
9/7/2017 0700  
21,518 Acres  
Page: 6

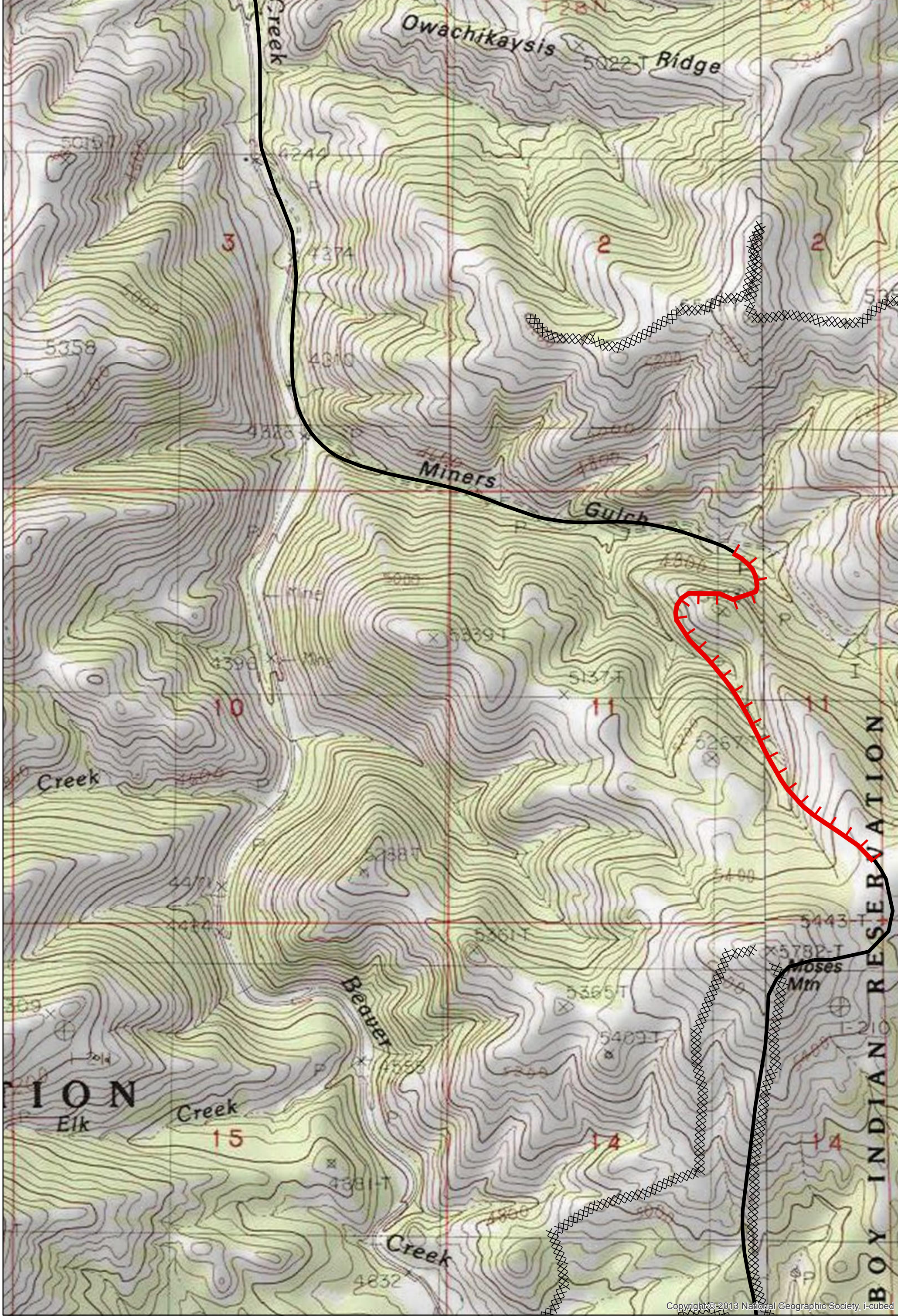


- Drop Point
- Helispot
- ▣ Incident Command Post
- Ⓢ Staging Area
- Ⓜ Water Source
- ) Division Break
- ⚙ Sling Site
- Ⓡ Repeater
- ▬ Uncontrolled Fire Edge
- ▬ Completed Line
- ▭ County boundary
- ▭ Rocky Boy Reservation

N

0 0.1 0.2 Miles

Map created Sept 6, 2017 1930 hrs  
NAD83 UTM Zone 12N



Copyright © 2013 National Geographic Society, i-cubed

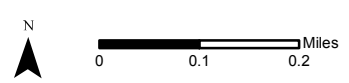
**Dozer Line Index**

East Fork  
9/7/2017 0700  
21,518 Acres  
Page: 7



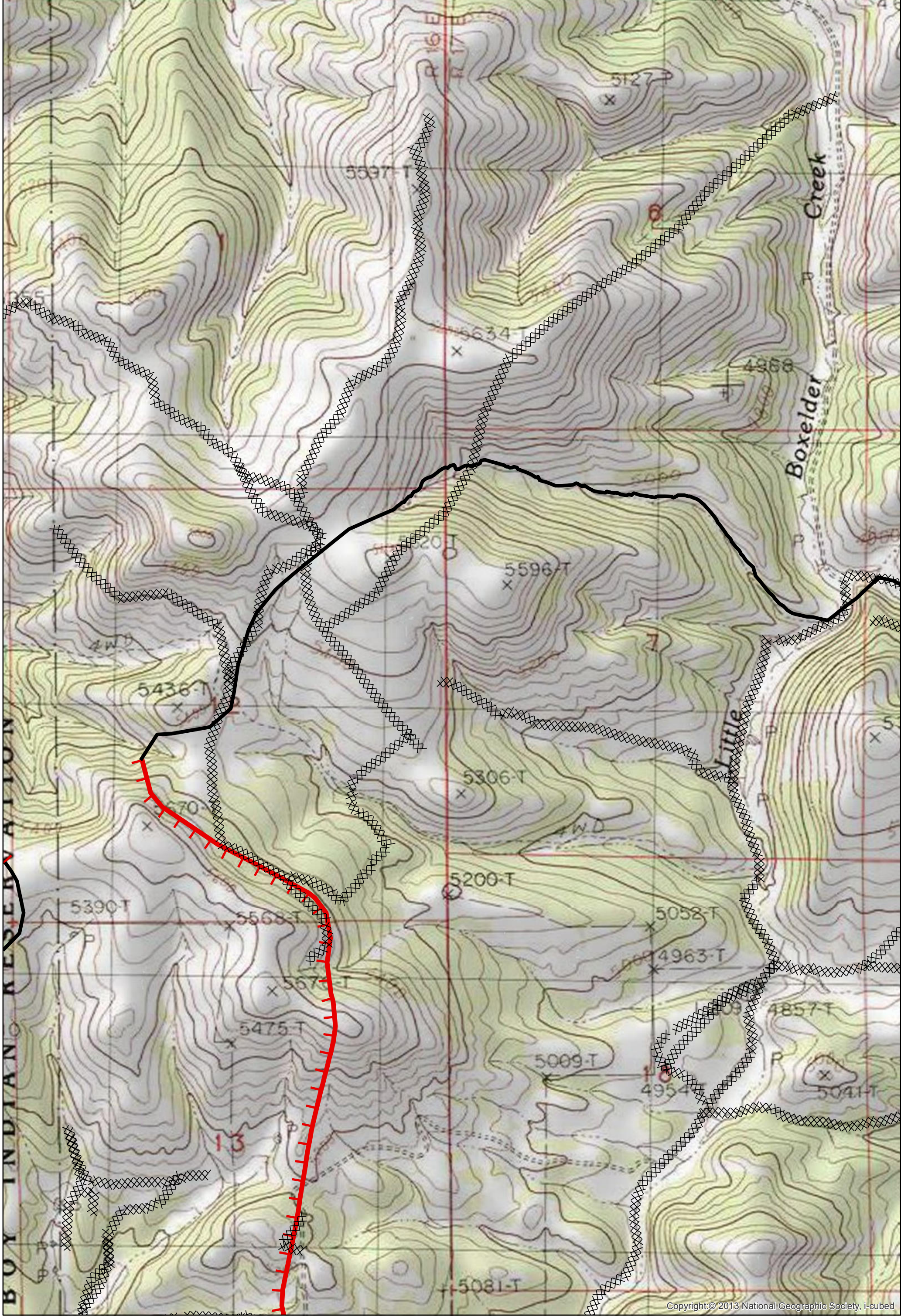
- Drop Point
- Helispot
- ▣ Incident Command Post
- ⊙ Staging Area
- ⊕ Water Source
- ) Division Break
- △ Sling Site
- Ⓡ Repeater

- ▬ Uncontrolled Fire Edge
- ▬ Completed Line
- ▭ County boundary
- ▭ Rocky Boy Reservation



Map created Sept 6, 2017 1930 hrs  
NAD83 UTM Zone 12N





Copyright © 2013 National Geographic Society, i-cubed

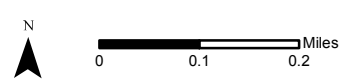
**Dozer Line Index**

East Fork  
9/7/2017 0700  
21,518 Acres  
Page: 8

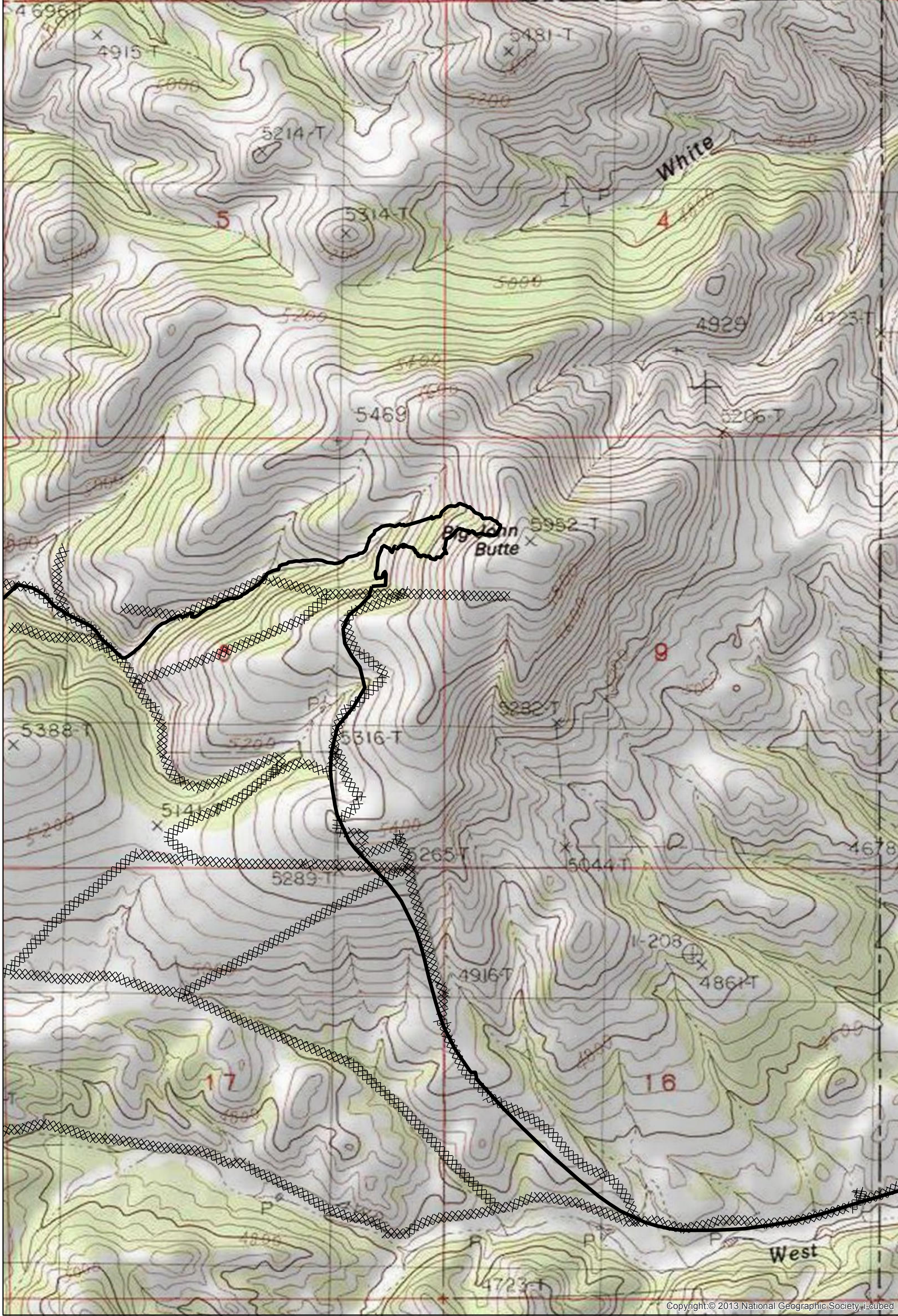


- Drop Point
- Helispot
- ▣ Incident Command Post
- Ⓢ Staging Area
- Ⓜ Water Source
- ) Division Break
- ⚙ Sling Site
- Ⓡ Repeater

- ▬ Uncontrolled Fire Edge
- ▬ Completed Line
- ▭ County boundary
- ▭ Rocky Boy Reservation



Map created Sept 6, 2017 1930 hrs  
NAD83 UTM Zone 12N



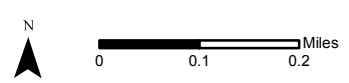
Copyright: © 2013 National Geographic Society, i-cubed

**Dozer Line Index**

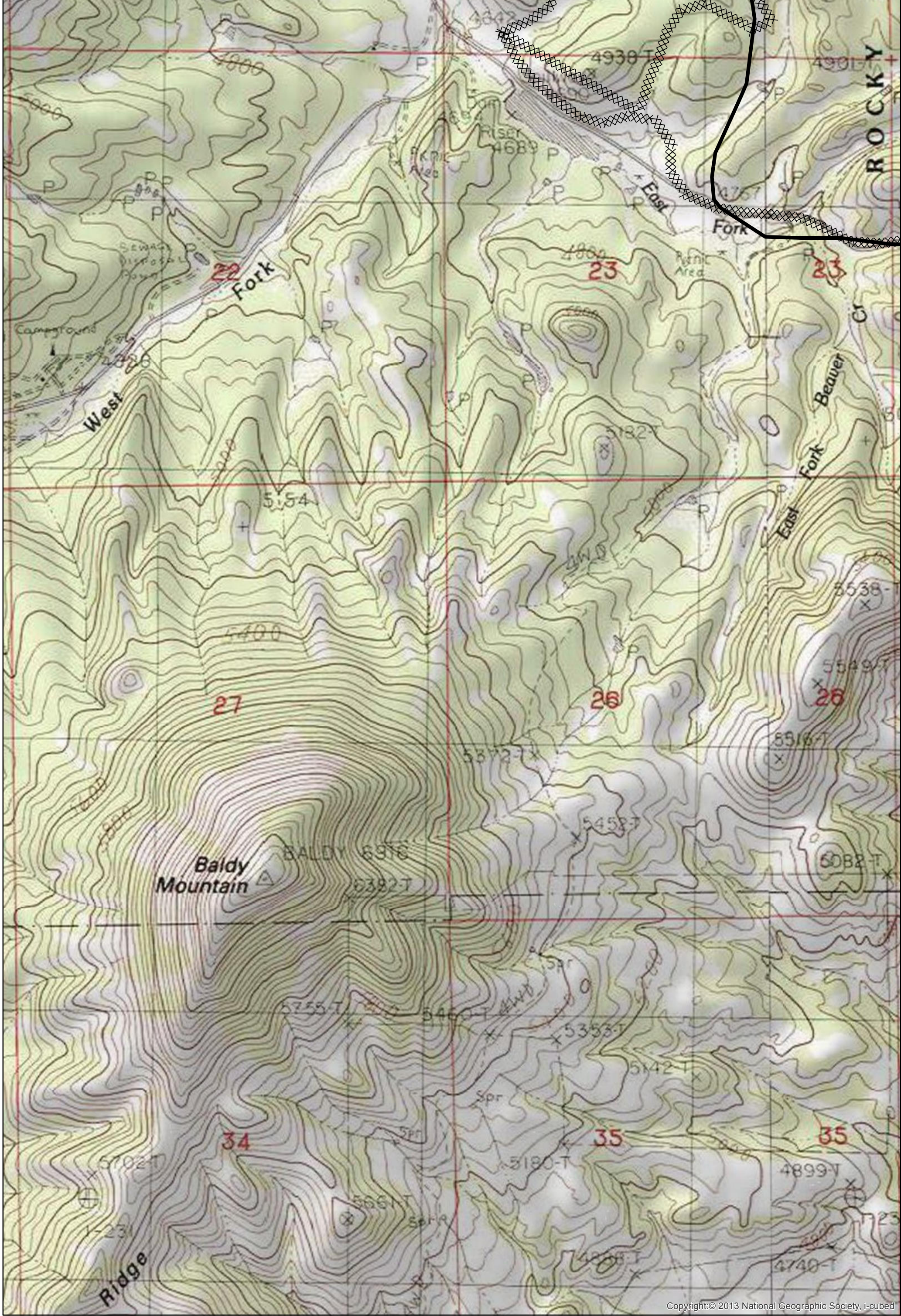
East Fork  
9/7/2017 0700  
21,518 Acres  
Page: 9



- Drop Point
- Helispot
- ▣ Incident Command Post
- Ⓢ Staging Area
- Ⓜ Water Source
- ⌋ Division Break
- ⚙ Sling Site
- Ⓡ Repeater
- ▬ Uncontrolled Fire Edge
- ▬ Completed Line
- ▭ County boundary
- ▭ Rocky Boy Reservation



Map created Sept 6, 2017 1930 hrs  
NAD83 UTM Zone 12N



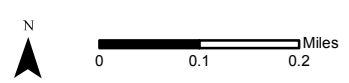
Copyright: © 2013 National Geographic Society, i-cubed

**Dozer Line Index**

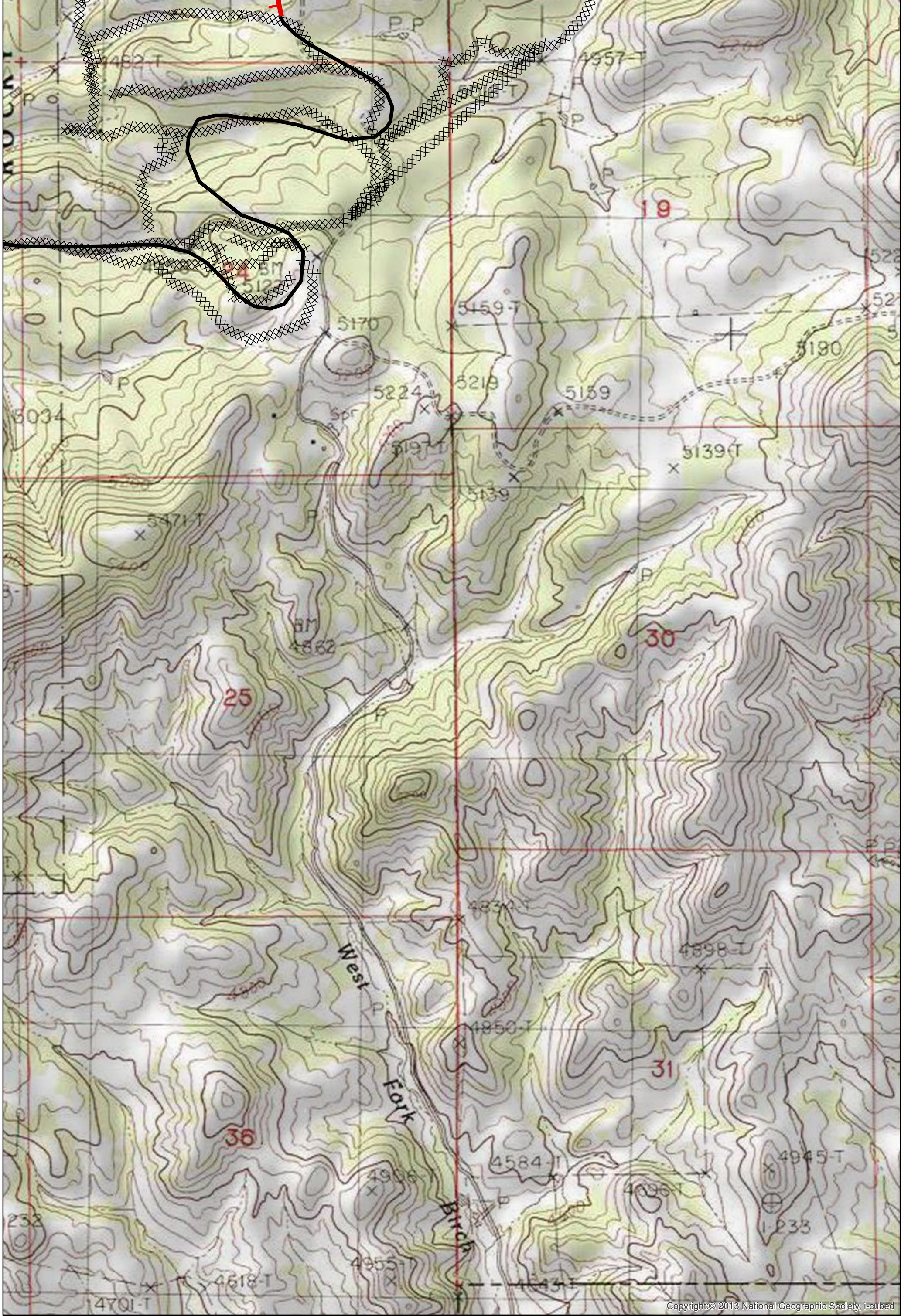
East Fork  
9/7/2017 0700  
21,518 Acres  
Page: 10



- Drop Point
- Helispot
- ▣ Incident Command Post
- ⊙ Staging Area
- ⊙ Water Source
- ⌋ Division Break
- ⊙ Sling Site
- ⊙ Repeater
- ▬ Uncontrolled Fire Edge
- ▬ Completed Line
- ▭ County boundary
- ▭ Rocky Boy Reservation



Map created Sept 6, 2017 1930 hrs  
NAD83 UTM Zone 12N



Copyright © 2013 National Geographic Society, i-cubed

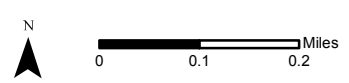
**Dozer Line Index**

East Fork  
9/7/2017 0700  
21,518 Acres  
Page: 11

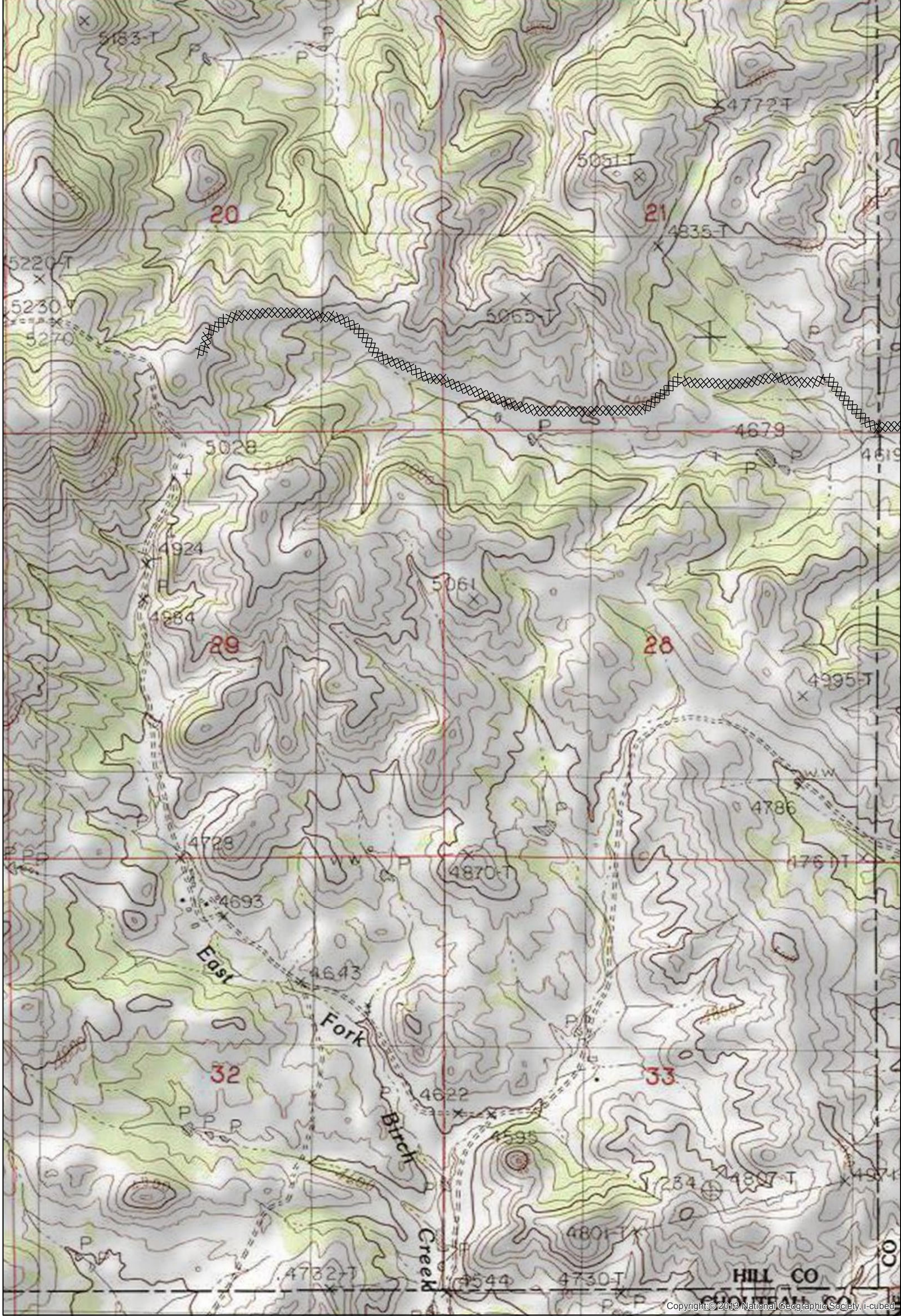


- Drop Point
- Helispot
- ▣ Incident Command Post
- Ⓢ Staging Area
- Ⓜ Water Source
- ⌋ Division Break
- ⚙ Sling Site
- Ⓡ Repeater

- ⌋ Uncontrolled Fire Edge
- Completed Line
- ▭ County boundary
- ▭ Rocky Boy Reservation



Map created Sept 6, 2017 1930 hrs  
NAD83 UTM Zone 12N



Copyright © 2013 National Geographic Society, i-cubed

**Dozer Line Index**

East Fork  
9/7/2017 0700  
21,518 Acres  
Page: 12



- Drop Point
- Helispot
- ▣ Incident Command Post
- Ⓢ Staging Area
- Ⓜ Water Source
- ) Division Break
- ⚙ Sling Site
- Ⓡ Repeater
- ▬ Uncontrolled Fire Edge
- ▬ Completed Line
- ▭ County boundary
- ▭ Rocky Boy Reservation

N

0 0.1 0.2 Miles

Map created Sept 6, 2017 1930 hrs  
NAD83 UTM Zone 12N