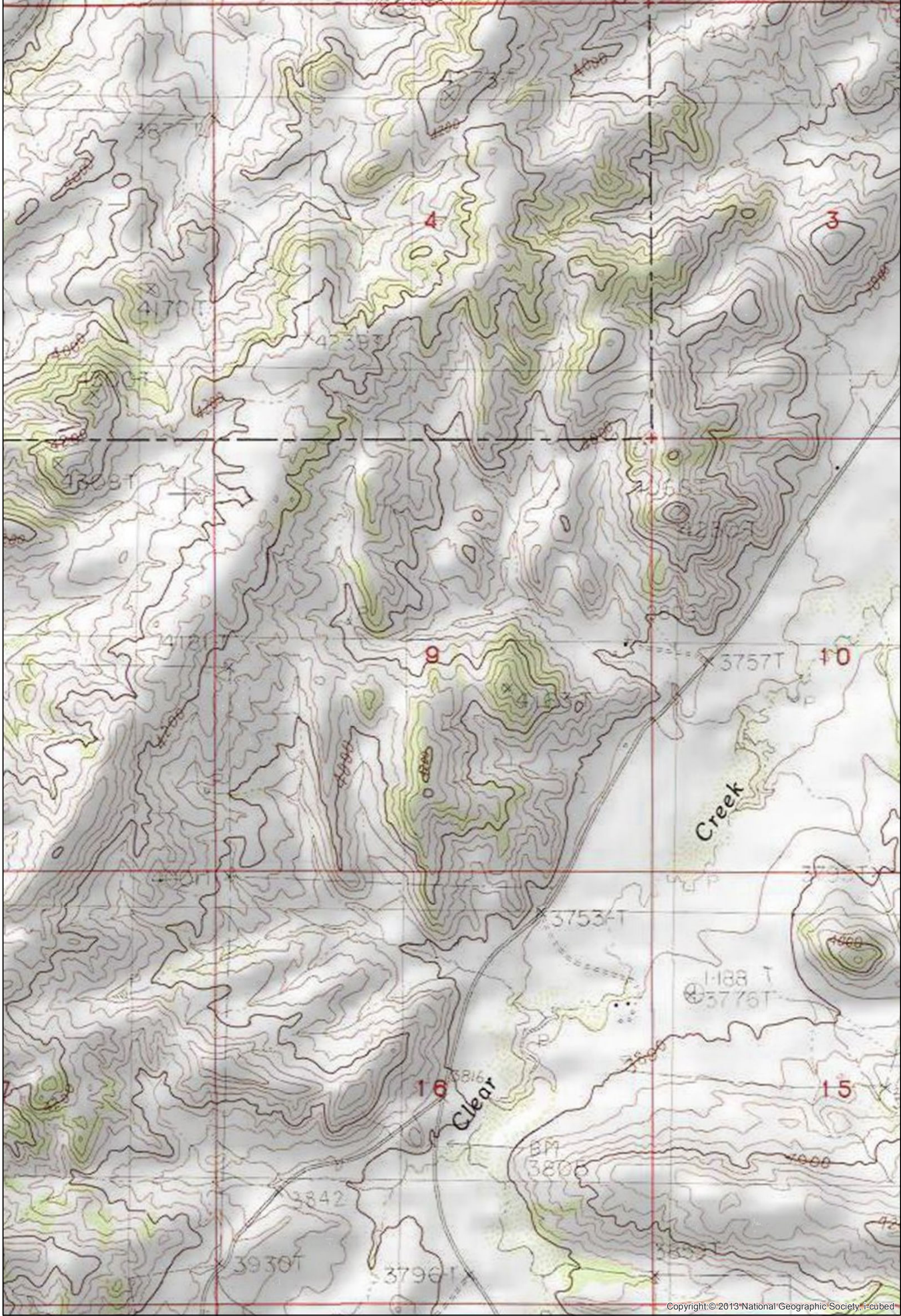


**Dozer Line Index
Blaine County**

East Fork
9/8/2017 0630
21,518 Acres

*Spaghetti Bowl has many unmapped sections of dozer line.



Dozer Line Index

East Fork
 9/8/2017 0630
 21,518 Acres
 Page: 1

- Drop Point
- Helispot
- ▣ Incident Command Post
- ⊙ Staging Area
- ⊙ Water Source
- ⌋ Division Break
- ⊙ Sling Site
- ⊙ Repeater
- ▬ Uncontrolled Fire Edge
- ▬ Completed Line
- ▭ County boundary
- ▭ Rocky Boy Reservation

N

 0 0.075 0.15 Miles
 Map created Sept 7, 2017 1930 hrs
 NAD83 UTM Zone 12N

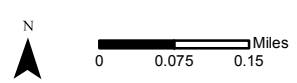


Copyright © 2013 National Geographic Society, i-cubed

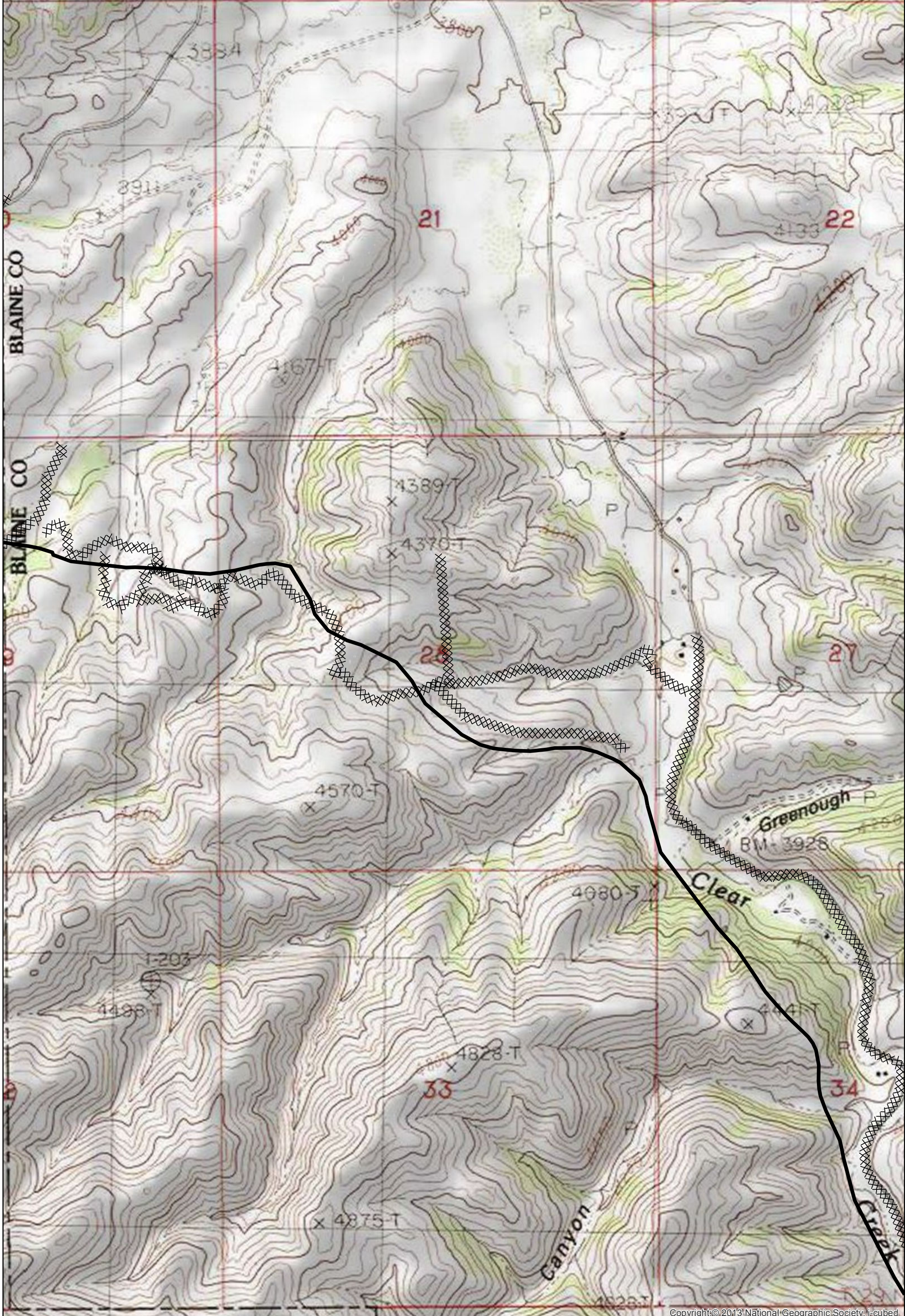
Dozer Line Index

East Fork
 9/8/2017 0630
 21,518 Acres
 Page: 2

- Drop Point
- Helispot
- ▣ Incident Command Post
- ⊙ Staging Area
- ⊙ Water Source
- ⌋ Division Break
- ⊙ Sling Site
- ⊙ Repeater
- ▬ Uncontrolled Fire Edge
- ▬ Completed Line
- ▭ County boundary
- ▭ Rocky Boy Reservation



Map created Sept 7, 2017 1930 hrs
 NAD83 UTM Zone 12N

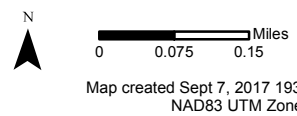


Copyright © 2013 National Geographic Society, i-cubed

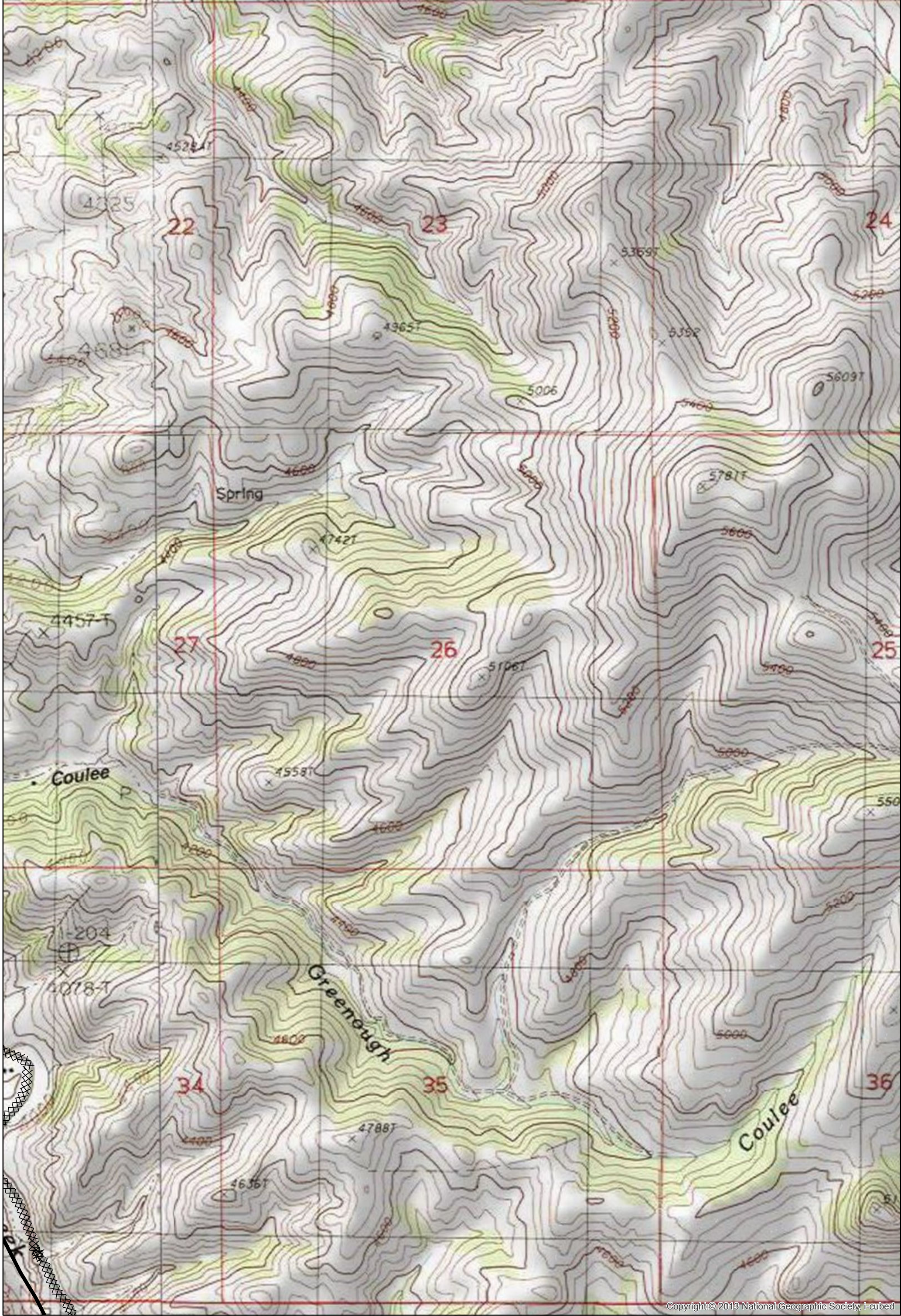
Dozer Line Index

East Fork
 9/8/2017 0630
 21,518 Acres
 Page: 3

- Drop Point
- Helispot
- ▣ Incident Command Post
- Ⓢ Staging Area
- Ⓜ Water Source
-) Division Break
- ⚙ Sling Site
- Ⓡ Repeater
- ▬ Uncontrolled Fire Edge
- ▬ Completed Line
- ▭ County boundary
- ▭ Rocky Boy Reservation



Map created Sept 7, 2017 1930 hrs
 NAD83 UTM Zone 12N



Copyright © 2013 National Geographic Society, i-cubed

Dozer Line Index

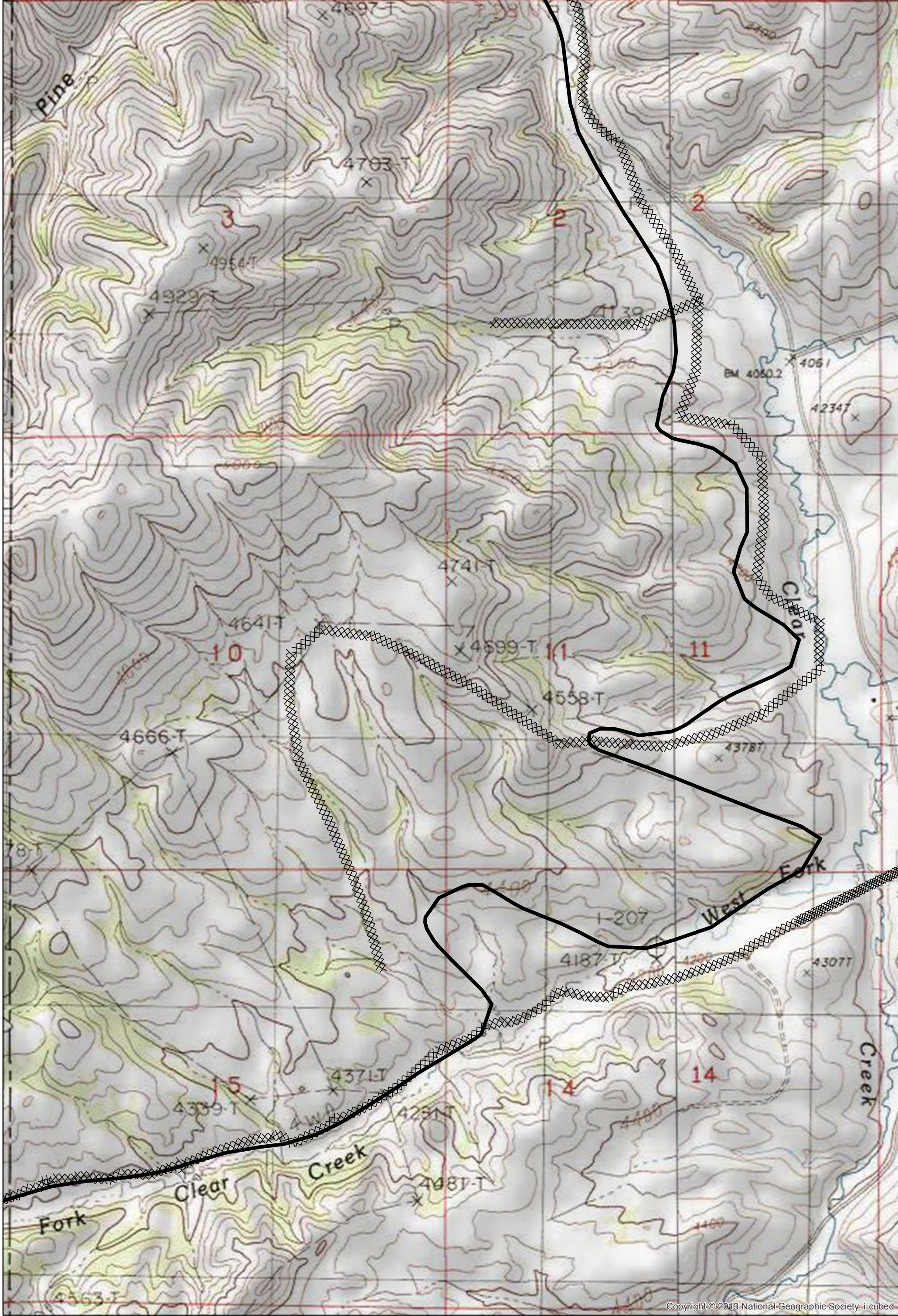
East Fork
 9/8/2017 0630
 21,518 Acres
 Page: 4

- Drop Point
- Helispot
- ▣ Incident Command Post
- Ⓢ Staging Area
- Ⓜ Water Source
- ⎵ Division Break
- ⚙ Sling Site
- Ⓡ Repeater
- ▬ Uncontrolled Fire Edge
- ▬ Completed Line
- ▭ County boundary
- ▭ Rocky Boy Reservation



0 0.075 0.15 Miles

Map created Sept 7, 2017 1930 hrs
 NAD83 UTM Zone 12N

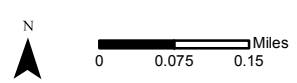


Copyright © 2013 National Geographic Society, i-cubed

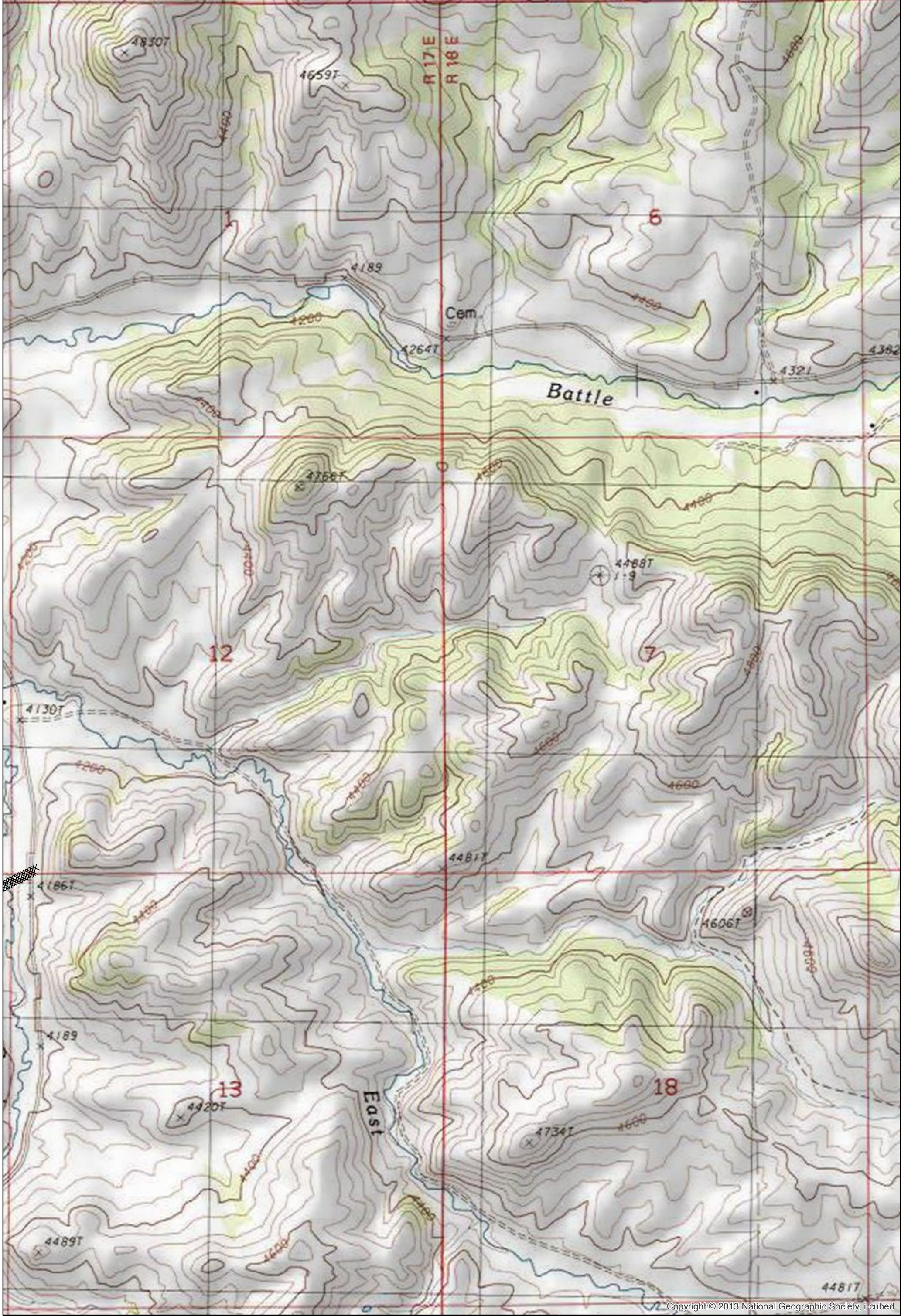
Dozer Line Index

East Fork
 9/8/2017 0630
 21,518 Acres
 Page: 5

- Drop Point
- Helispot
- ▣ Incident Command Post
- Ⓢ Staging Area
- Ⓜ Water Source
-) Division Break
- ⚙ Sling Site
- Ⓡ Repeater
- ▬ Uncontrolled Fire Edge
- ▬ Completed Line
- ▭ County boundary
- ▭ Rocky Boy Reservation



Map created Sept 7, 2017 1930 hrs
 NAD83 UTM Zone 12N



Copyright © 2013 National Geographic Society, i-cubed

Dozer Line Index

East Fork
 9/8/2017 0630
 21,518 Acres
 Page: 6

- Drop Point
- Helispot
- ▣ Incident Command Post
- Ⓢ Staging Area
- Ⓜ Water Source
- ⎵ Division Break
- ⚙ Sling Site
- Ⓡ Repeater
- ▬ Uncontrolled Fire Edge
- ▬ Completed Line
- ▭ County boundary
- ▭ Rocky Boy Reservation



Map created Sept 7, 2017 1930 hrs
 NAD83 UTM Zone 12N

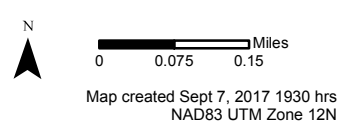


Copyright © 2013 National Geographic Society, i-cubed

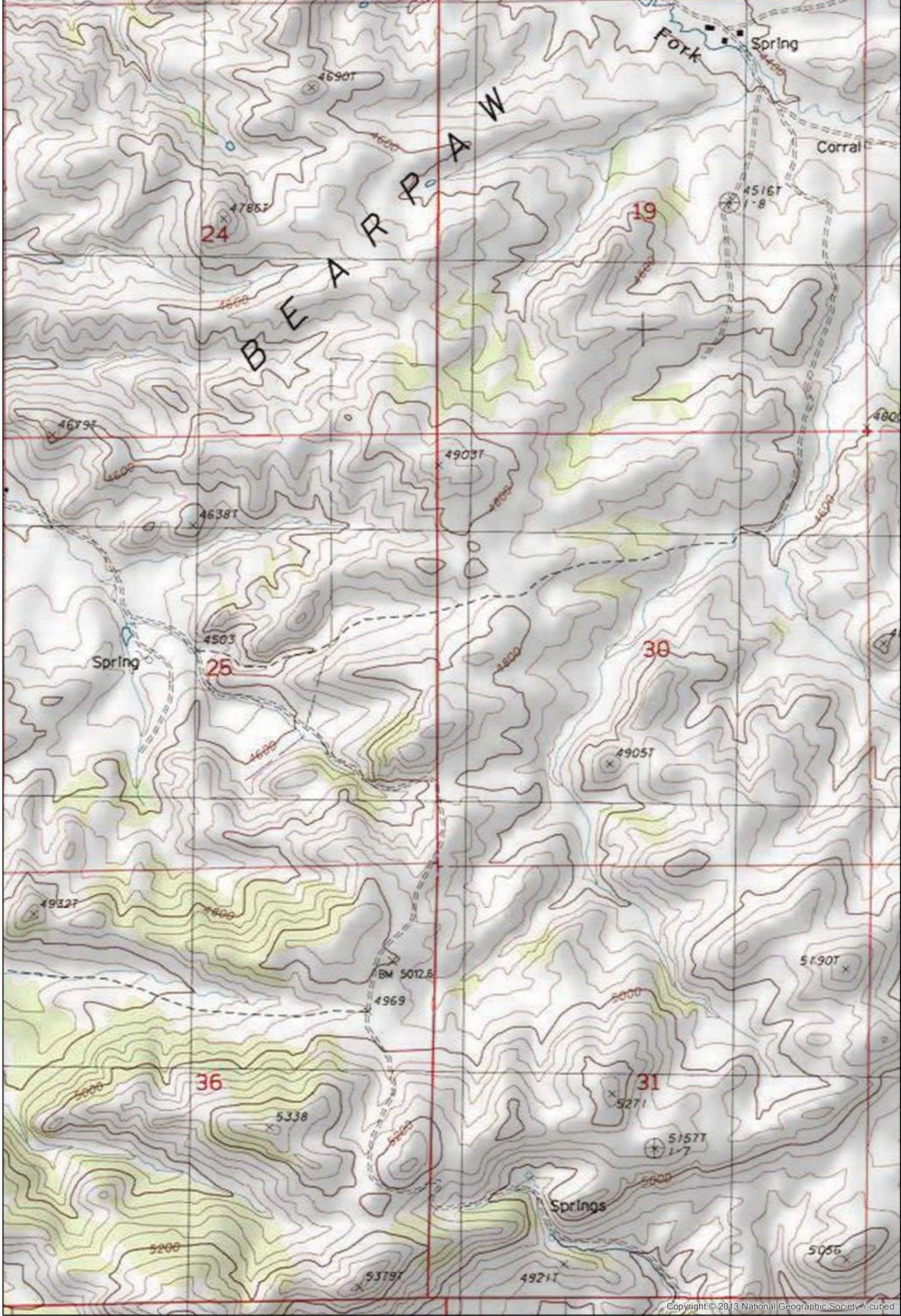
Dozer Line Index

East Fork
 9/8/2017 0630
 21,518 Acres
 Page: 7

- Drop Point
- Helispot
- ▣ Incident Command Post
- ⊙ Staging Area
- ⊙ Water Source
- ⌋ Division Break
- ⊙ Sling Site
- ⊙ Repeater
- ▬ Uncontrolled Fire Edge
- ▬ Completed Line
- ▬ County boundary
- ▬ Rocky Boy Reservation



Map created Sept 7, 2017 1930 hrs
 NAD83 UTM Zone 12N

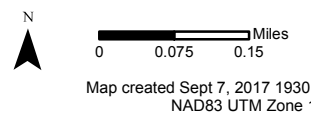


Copyright © 2013 National Geographic Society, i-cubed

Dozer Line Index

East Fork
 9/8/2017 0630
 21,518 Acres
 Page: 8

- Drop Point
- Helispot
- ▣ Incident Command Post
- ⊙ Staging Area
- ⊙ Water Source
-) Division Break
- ⊙ Sling Site
- ⊙ Repeater
- ▬ Uncontrolled Fire Edge
- ▬ Completed Line
- ▭ County boundary
- ▭ Rocky Boy Reservation



Map created Sept 7, 2017 1930 hrs
 NAD83 UTM Zone 12N