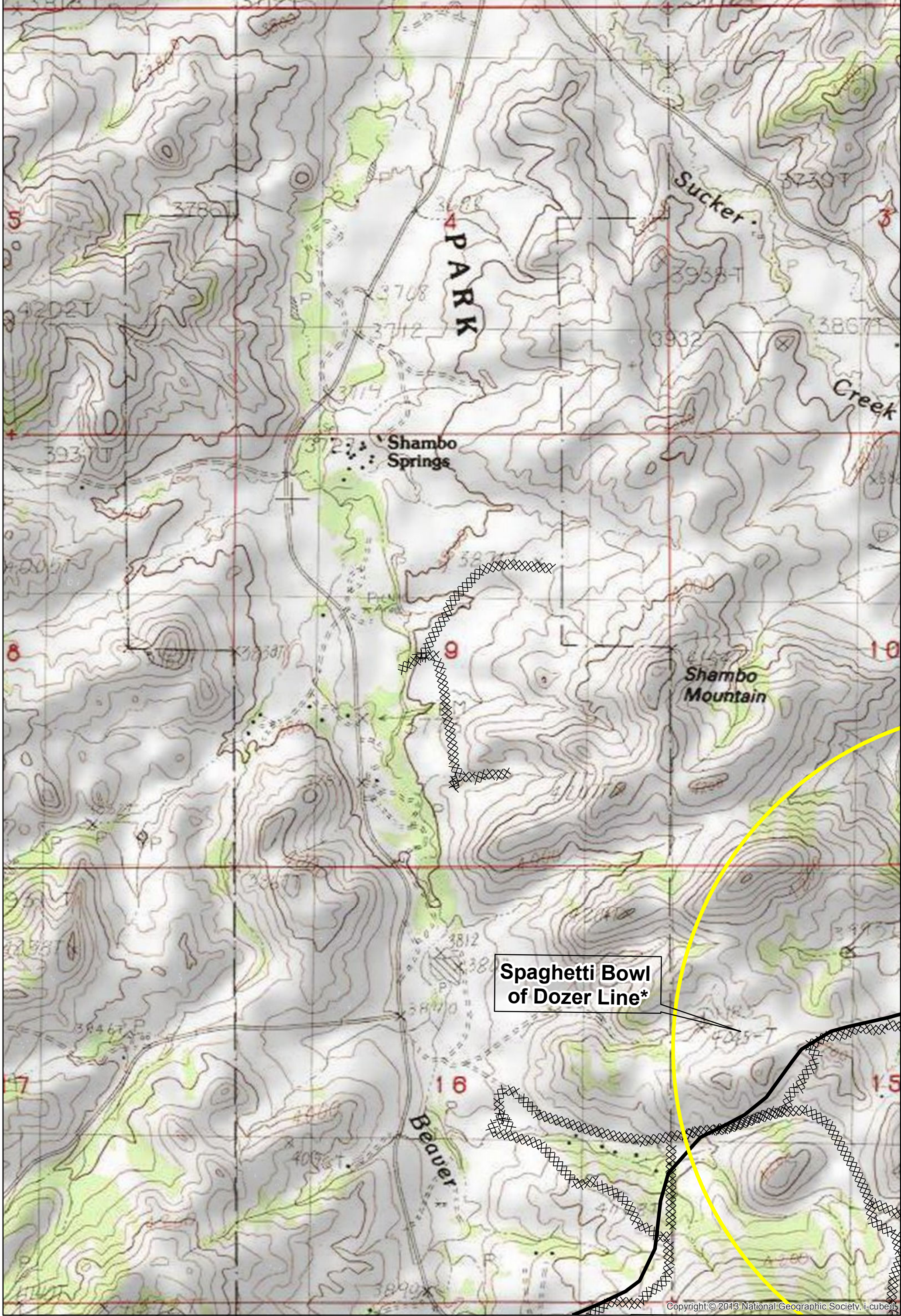


Copyright: © 2013 National Geographic Society, i-cubed

*Spaghetti Bowl has many unmapped sections of dozer line.



Copyright © 2013 National Geographic Society, i-cubed

Dozer Line Index

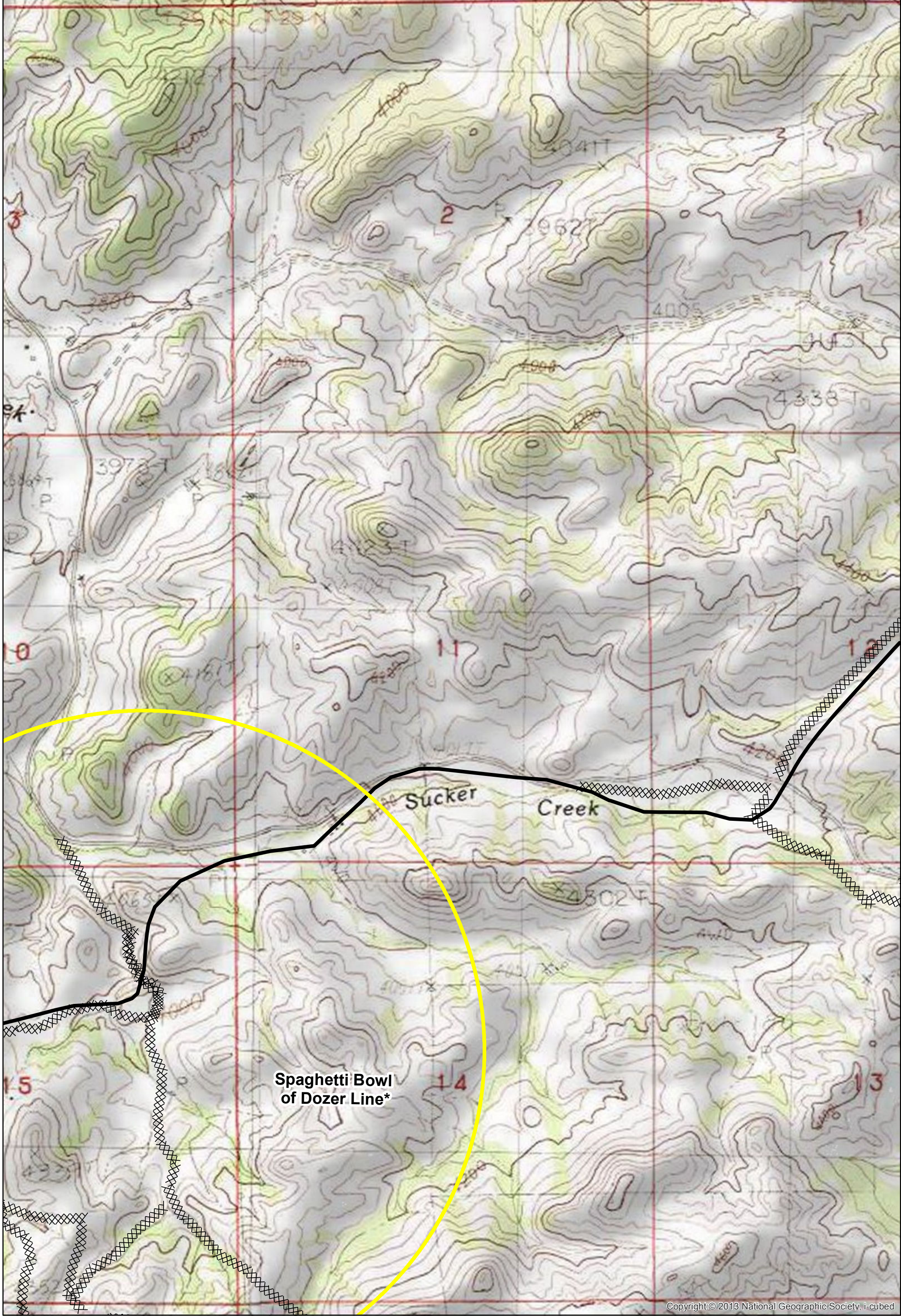
East Fork
9/8/2017 0630
21,518 Acres
Page: 1

- Drop Point
- Helispot
- ▣ Incident Command Post
- ⊙ Staging Area
- ⊙ Water Source
-) Division Break
- ⊙ Sling Site
- ⊙ Repeater
- ▬ Uncontrolled Fire Edge
- ▬ Completed Line
- ▭ County boundary
- ▭ Rocky Boy Reservation



0 0.075 0.15 Miles

Map created Sept 6, 2017 1930 hrs
NAD83 UTM Zone 12N

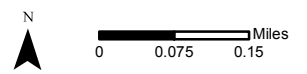


Copyright © 2013 National Geographic Society. i-cubed

Dozer Line Index

East Fork
9/8/2017 0630
21,518 Acres
Page: 2

- Drop Point
- Helispot
- ▣ Incident Command Post
- ⊙ Staging Area
- ⊙ Water Source
-) Division Break
- ⊙ Sling Site
- ⊙ Repeater
- ▬ Uncontrolled Fire Edge
- ▬ Completed Line
- ▭ County boundary
- ▭ Rocky Boy Reservation



Map created Sept 6, 2017 1930 hrs
NAD83 UTM Zone 12N



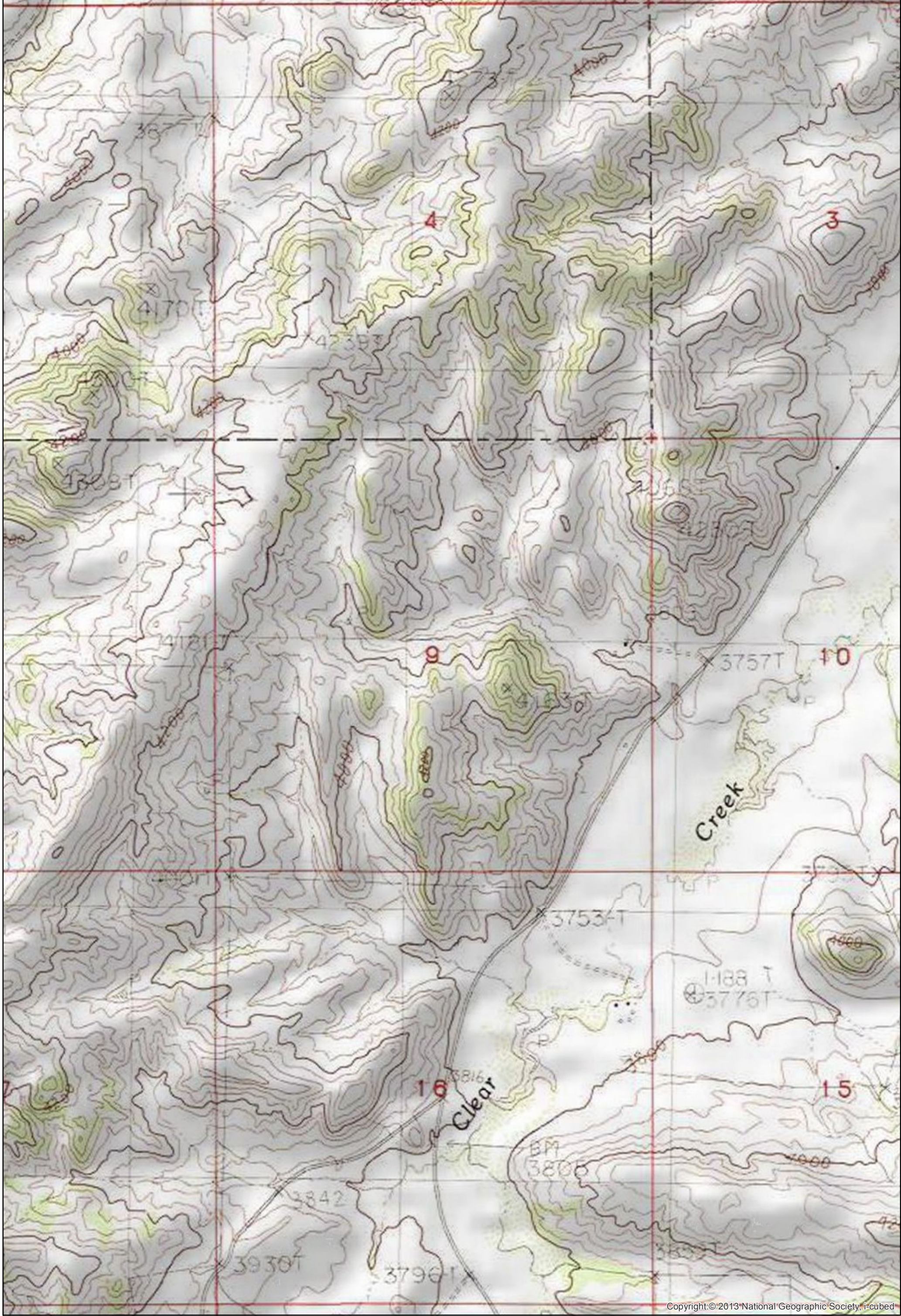
Dozer Line Index

East Fork
 9/8/2017 0630
 21,518 Acres
 Page: 3

- Drop Point
- Helispot
- ▣ Incident Command Post
- ⊙ Staging Area
- ⊙ Water Source
- ⌋ Division Break
- ⚙ Sling Site
- Ⓜ Repeater
- ▬ Uncontrolled Fire Edge
- ▬ Completed Line
- ▭ County boundary
- ▭ Rocky Boy Reservation

N

 0 0.075 0.15 Miles
 Map created Sept 6, 2017 1930 hrs
 NAD83 UTM Zone 12N

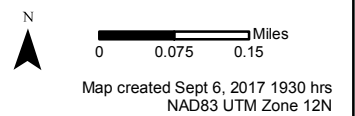


Copyright © 2013 National Geographic Society, i-cubed

Dozer Line Index

East Fork
 9/8/2017 0630
 21,518 Acres
 Page: 4

- Drop Point
- Helispot
- ▣ Incident Command Post
- Ⓢ Staging Area
- Ⓜ Water Source
- ⌋ Division Break
- ⚙ Sling Site
- Ⓡ Repeater
- ▬ Uncontrolled Fire Edge
- ▬ Completed Line
- ▭ County boundary
- ▭ Rocky Boy Reservation



Map created Sept 6, 2017 1930 hrs
 NAD83 UTM Zone 12N

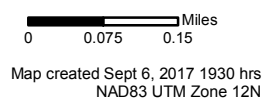


Copyright © 2013 National Geographic Society, i-cubed

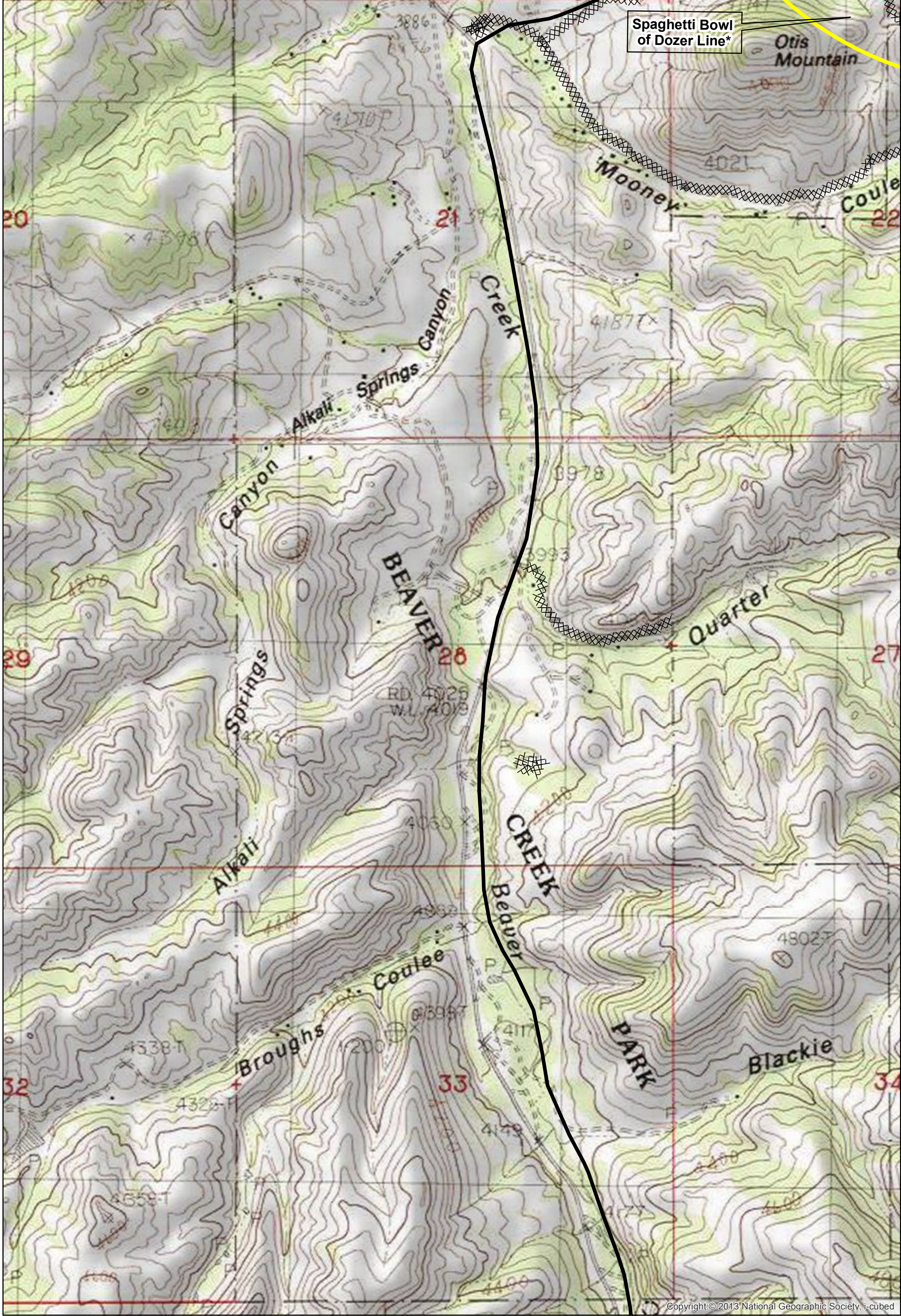
Dozer Line Index

East Fork
 9/8/2017 0630
 21,518 Acres
 Page: 5

- | | | |
|-------------------------|--------------------|--------------------------|
| ● Drop Point | () Division Break | ▬ Uncontrolled Fire Edge |
| ● Helispot | △ Sling Site | ▬ Completed Line |
| ▭ Incident Command Post | Ⓡ Repeater | ▭ County boundary |
| Ⓢ Staging Area | | ▭ Rocky Boy Reservation |
| Ⓜ Water Source | | |



Map created Sept 6, 2017 1930 hrs
 NAD83 UTM Zone 12N



Spaghetti Bowl
of Dozer Line*

Otis
Mountain

Mooney

Coulee

Alkali Springs Canyon
Creek

Canyon

BEAVER

Quarter

Alkali Springs

Beaver
CREEK

Broughs Coulee

PARK

Blackie

Dozer Line Index

East Fork
9/8/2017 0630
21,518 Acres
Page: 6

- Drop Point
- Helispot
- Incident Command Post
- ⊙ Staging Area
- ⊙ Water Source

- ⌋ Division Break
- ⊙ Sling Site
- ⊙ Repeater

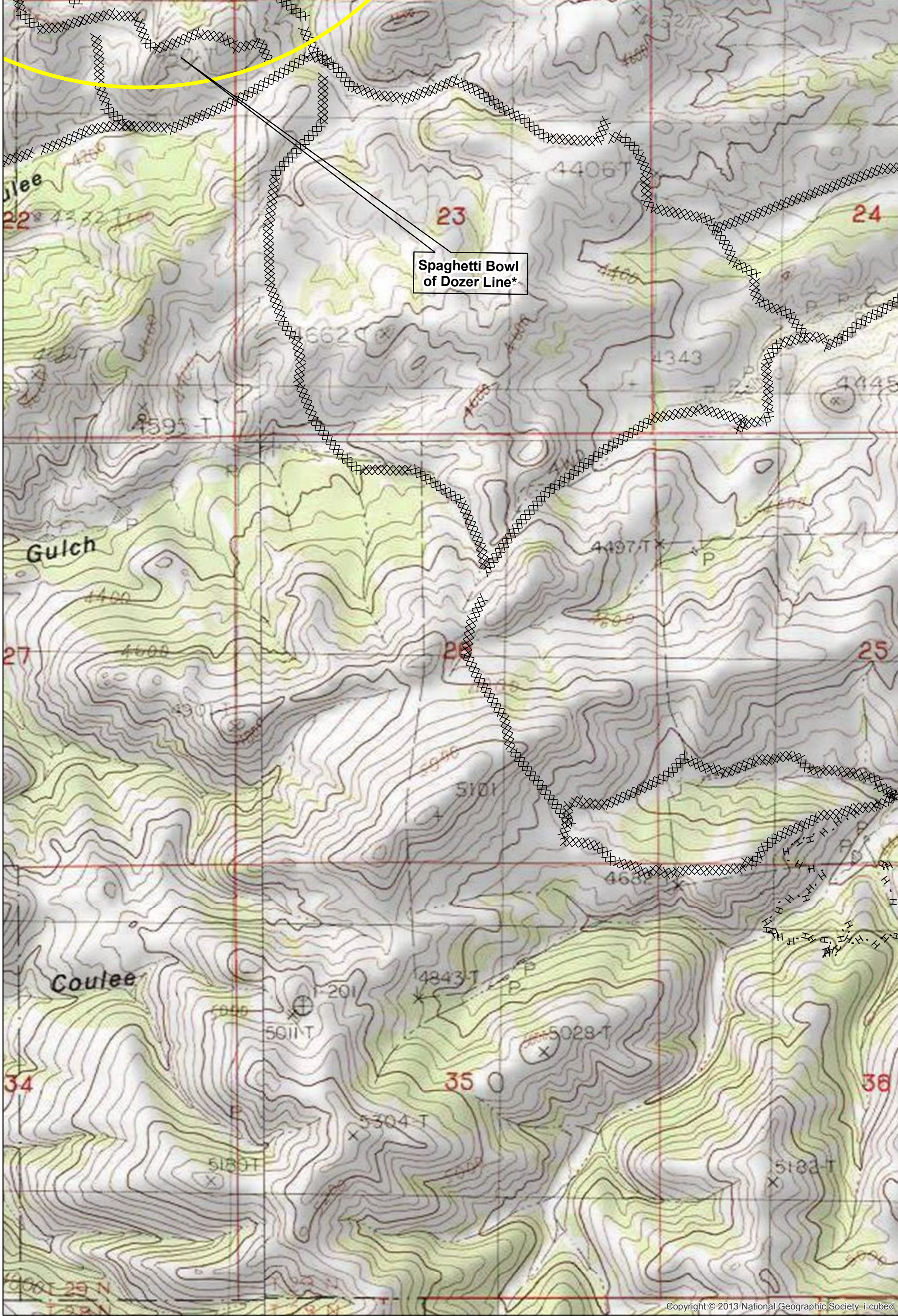
- ▬ Uncontrolled Fire Edge
- ▬ Completed Line
- ▬ County boundary
- ▬ Rocky Boy Reservation

N

0 0.075 0.15 Miles

Map created Sept 6, 2017 1930 hrs
NAD83 UTM Zone 12N

Copyright © 2013 National Geographic Society. i-cubed



Spaghetti Bowl
of Dozer Line*

Copyright © 2013 National Geographic Society. i-cubed

Dozer Line Index

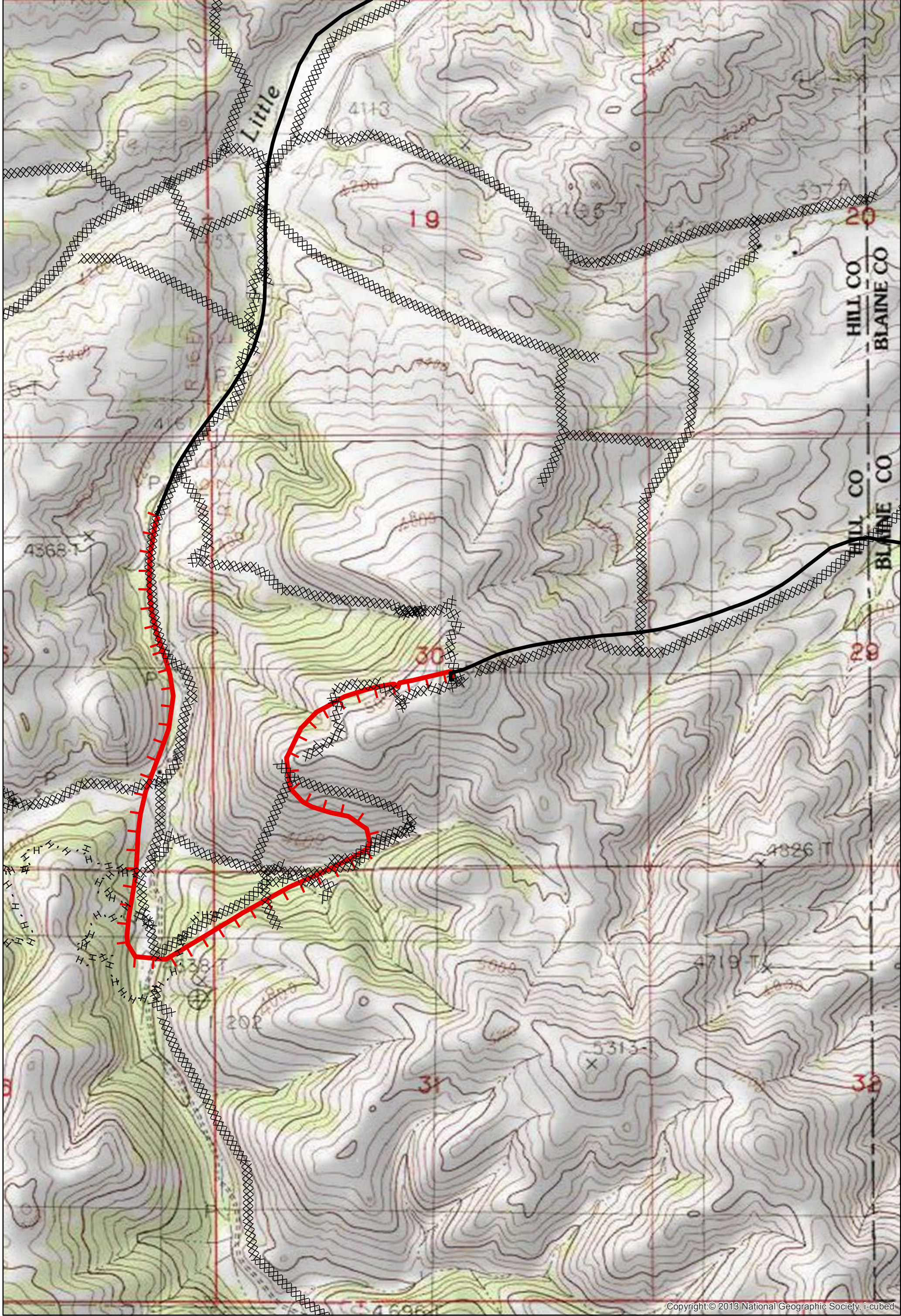
East Fork
9/8/2017 0630
21,518 Acres
Page: 7

- Drop Point
- Helispot
- ▣ Incident Command Post
- ⊙ Staging Area
- ⊙ Water Source
-) Division Break
- ⊙ Sling Site
- ⊙ Repeater
- ▬ Uncontrolled Fire Edge
- ▬ Completed Line
- ▭ County boundary
- ▭ Rocky Boy Reservation

N

0 0.075 0.15 Miles

Map created Sept 6, 2017 1930 hrs
NAD83 UTM Zone 12N



Copyright © 2013 National Geographic Society, i-cubed

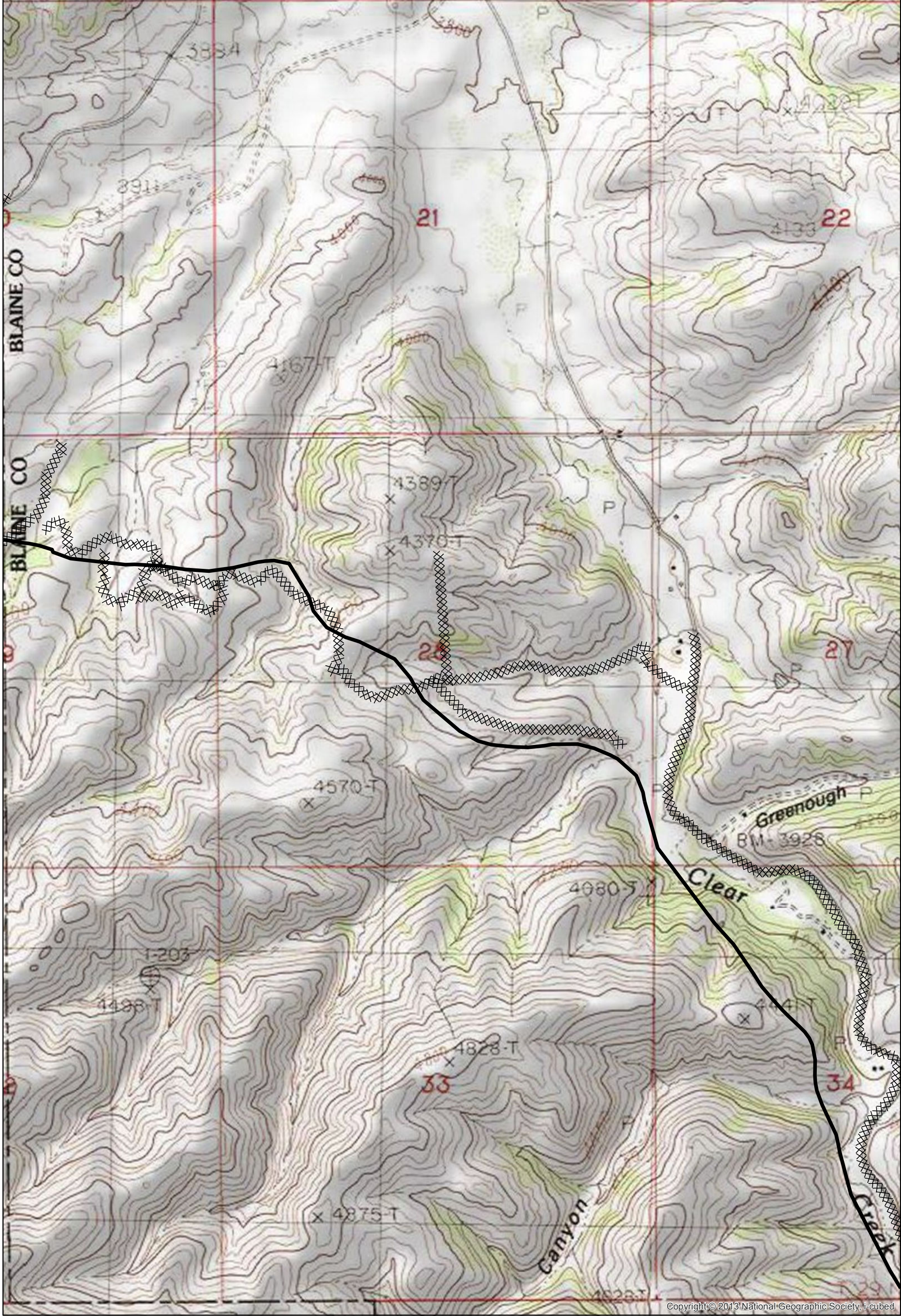
Dozer Line Index

East Fork
 9/8/2017 0630
 21,518 Acres
 Page: 8

- Drop Point
- Helispot
- ▣ Incident Command Post
- Ⓢ Staging Area
- Ⓜ Water Source
-) Division Break
- ⚙ Sling Site
- Ⓡ Repeater
- ▬ Uncontrolled Fire Edge
- ▬ Completed Line
- ▭ County boundary
- ▭ Rocky Boy Reservation

N

 0 0.075 0.15 Miles
 Map created Sept 6, 2017 1930 hrs
 NAD83 UTM Zone 12N

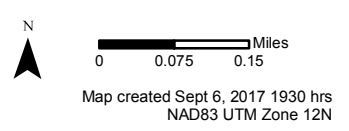


Copyright © 2013 National Geographic Society, i-cubed

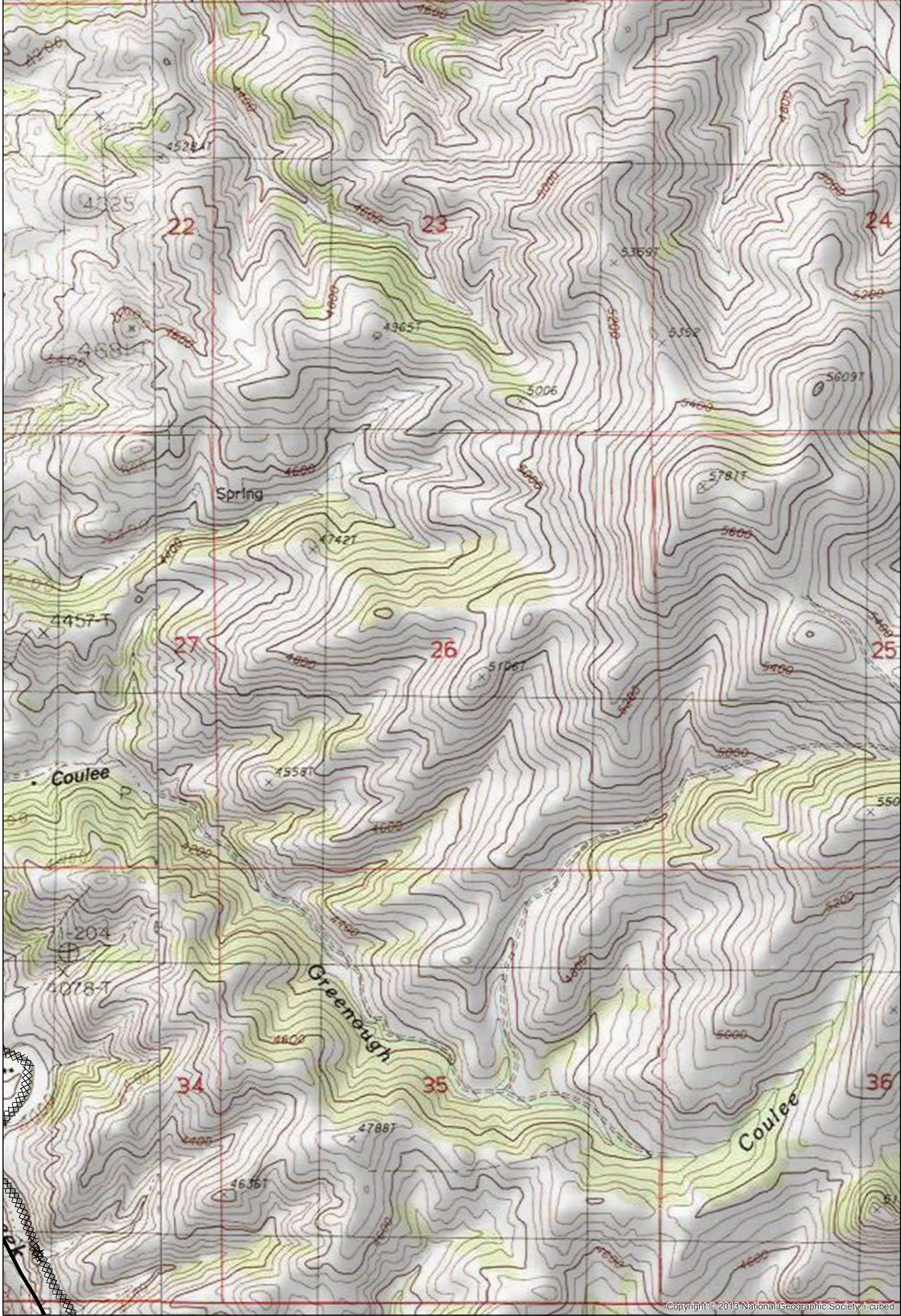
Dozer Line Index

East Fork
9/8/2017 0630
21,518 Acres
Page: 9

- Drop Point
- Helispot
- ▣ Incident Command Post
- Ⓢ Staging Area
- Ⓜ Water Source
-) Division Break
- ⚙ Sling Site
- Ⓡ Repeater
- ▬ Uncontrolled Fire Edge
- ▬ Completed Line
- ▭ County boundary
- ▭ Rocky Boy Reservation



Map created Sept 6, 2017 1930 hrs
NAD83 UTM Zone 12N

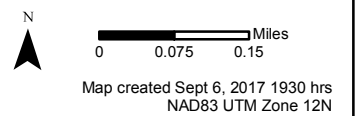


Copyright © 2013 National Geographic Society, i-cubed

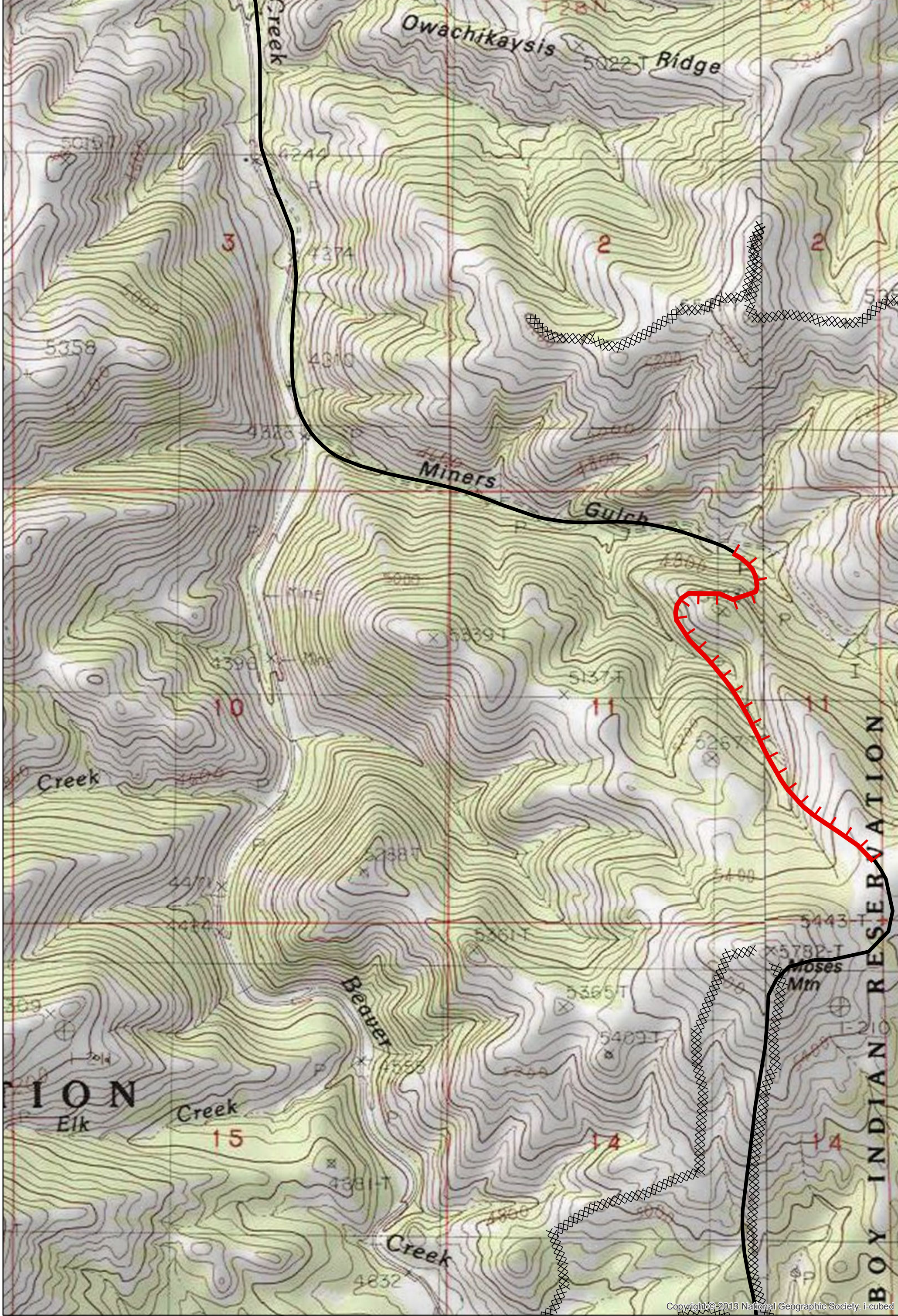
Dozer Line Index

East Fork
 9/8/2017 0630
 21,518 Acres
 Page: 10

- Drop Point
- Helispot
- ▣ Incident Command Post
- Ⓢ Staging Area
- Ⓜ Water Source
- ⎵ Division Break
- ⚙ Sling Site
- Ⓜ Repeater
- ▬ Uncontrolled Fire Edge
- ▬ Completed Line
- ▭ County boundary
- ▭ Rocky Boy Reservation



Map created Sept 6, 2017 1930 hrs
 NAD83 UTM Zone 12N

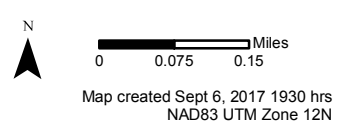


Copyright © 2013 National Geographic Society, i-cubed

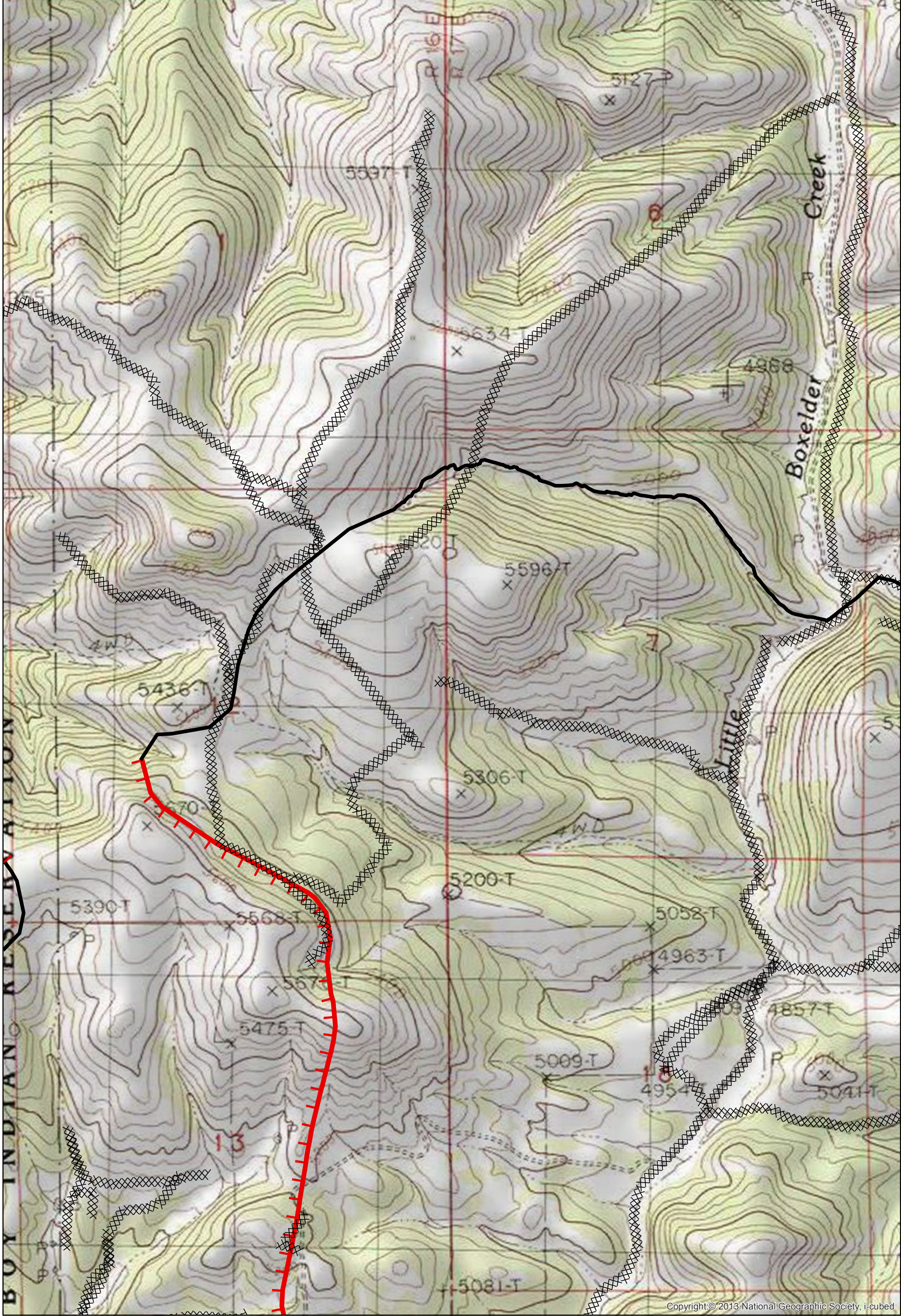
Dozer Line Index

East Fork
9/8/2017 0630
21,518 Acres
Page: 11

- Drop Point
- Helispot
- ▣ Incident Command Post
- ⊙ Staging Area
- ⊙ Water Source
-) Division Break
- ⊙ Sling Site
- ⊙ Repeater
- ▬ Uncontrolled Fire Edge
- ▬ Completed Line
- ▭ County boundary
- ▭ Rocky Boy Reservation



Map created Sept 6, 2017 1930 hrs
NAD83 UTM Zone 12N

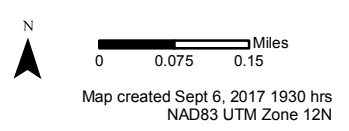


Copyright © 2013 National Geographic Society, i-cubed

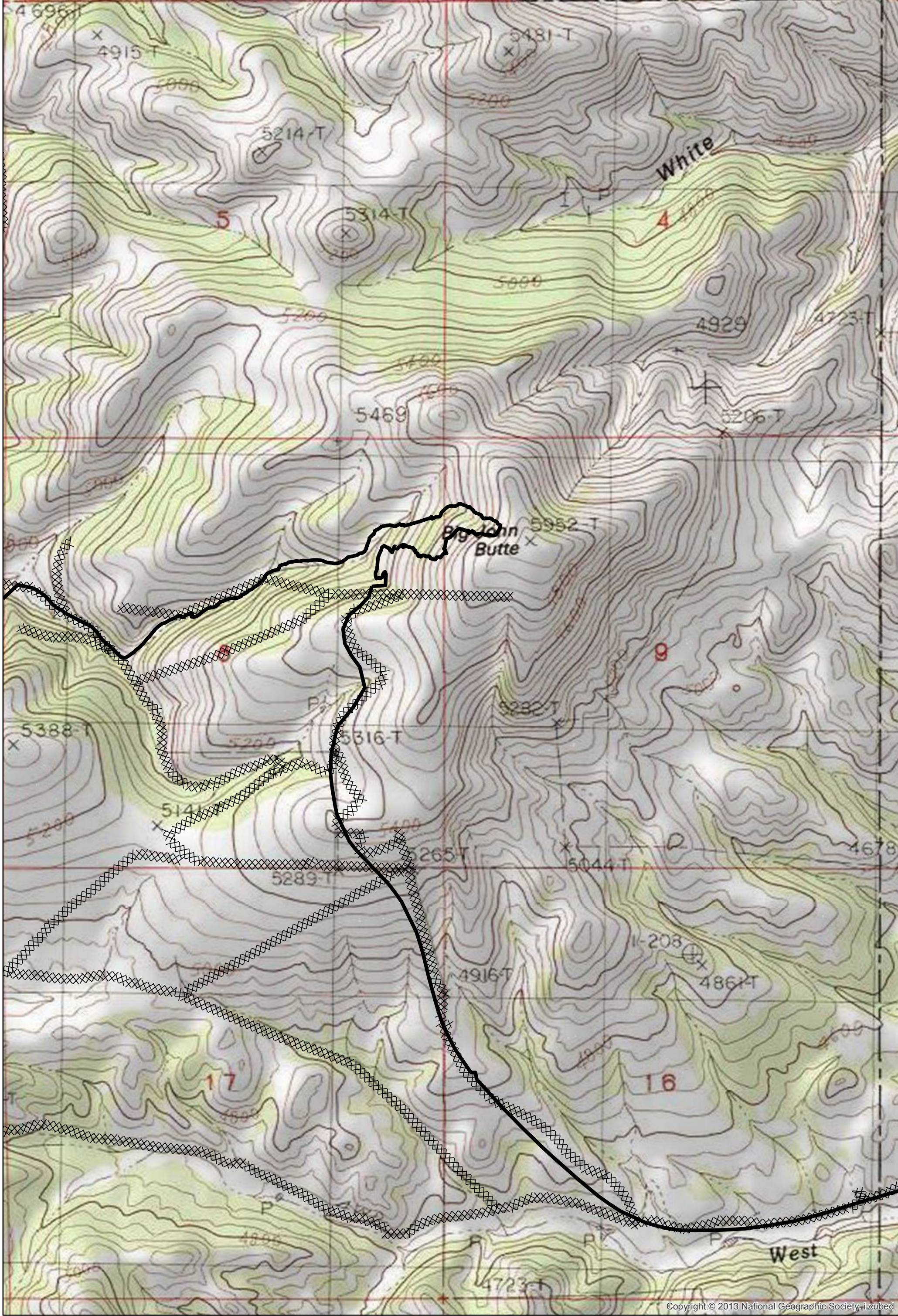
Dozer Line Index

East Fork
 9/8/2017 0630
 21,518 Acres
 Page: 12

- Drop Point
- Helispot
- ▣ Incident Command Post
- Ⓢ Staging Area
- Ⓜ Water Source
- ⌋ Division Break
- ⚙ Sling Site
- Ⓡ Repeater
- ▬ Uncontrolled Fire Edge
- ▬ Completed Line
- ▭ County boundary
- ▭ Rocky Boy Reservation



Map created Sept 6, 2017 1930 hrs
 NAD83 UTM Zone 12N



Copyright © 2013 National Geographic Society, i-cubed

Dozer Line Index

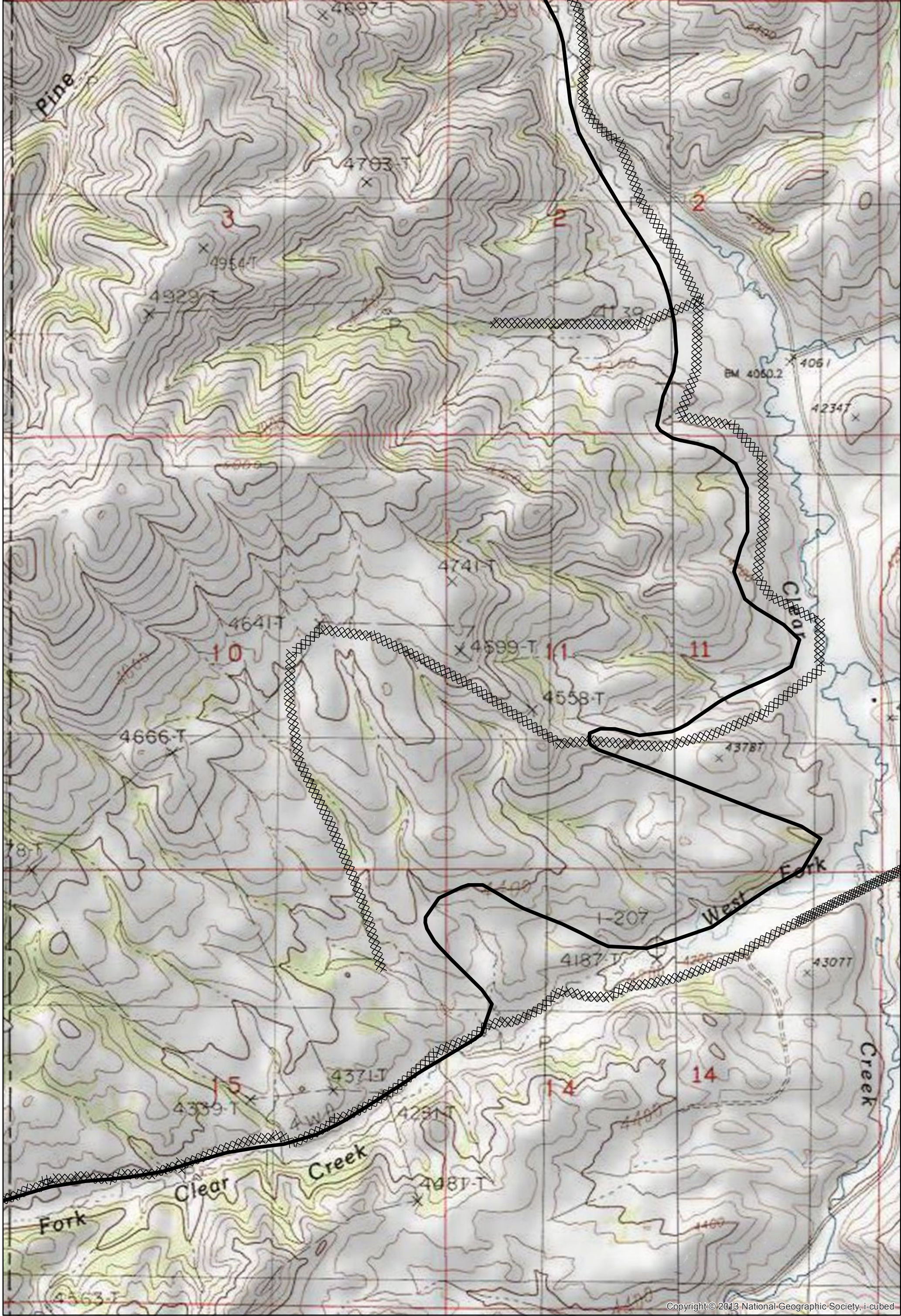
East Fork
 9/8/2017 0630
 21,518 Acres
 Page: 13

- Drop Point
- Helispot
- ▣ Incident Command Post
- Ⓢ Staging Area
- Ⓜ Water Source
- ⌋ Division Break
- ⚙ Sling Site
- Ⓡ Repeater
- ▬ Uncontrolled Fire Edge
- ▬ Completed Line
- ▭ County boundary
- ▭ Rocky Boy Reservation

N

0 0.075 0.15 Miles

Map created Sept 6, 2017 1930 hrs
 NAD83 UTM Zone 12N

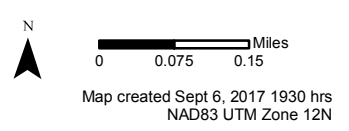


Copyright © 2013 National Geographic Society, i-cubed

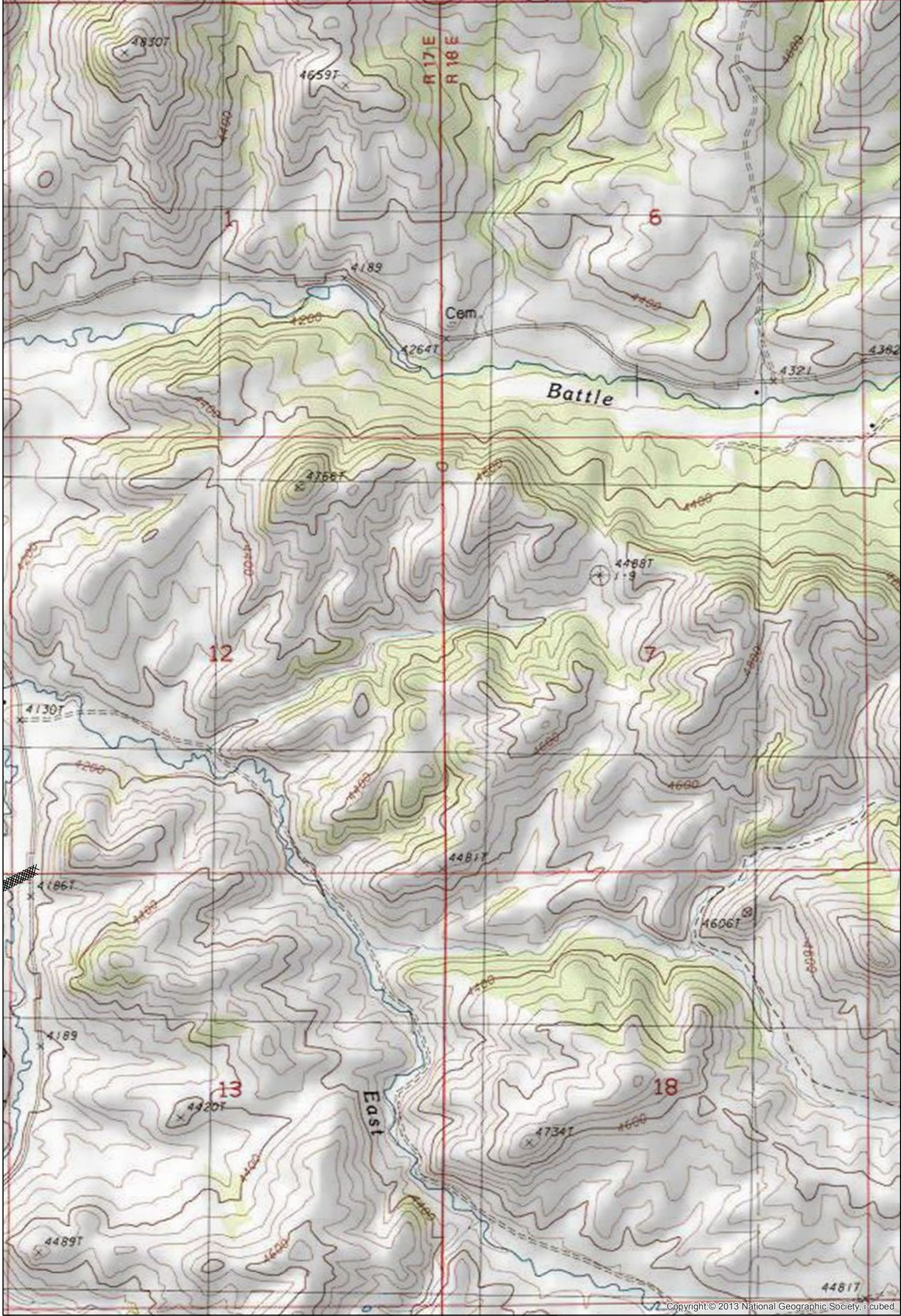
Dozer Line Index

East Fork
 9/8/2017 0630
 21,518 Acres
 Page: 14

- Drop Point
- Helispot
- ▣ Incident Command Post
- ⊙ Staging Area
- ⊙ Water Source
-) Division Break
- ⊙ Sling Site
- ⊙ Repeater
- ▬ Uncontrolled Fire Edge
- ▬ Completed Line
- ▭ County boundary
- ▭ Rocky Boy Reservation



Map created Sept 6, 2017 1930 hrs
 NAD83 UTM Zone 12N

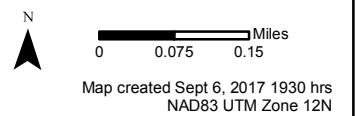


Copyright © 2013 National Geographic Society, i-cubed

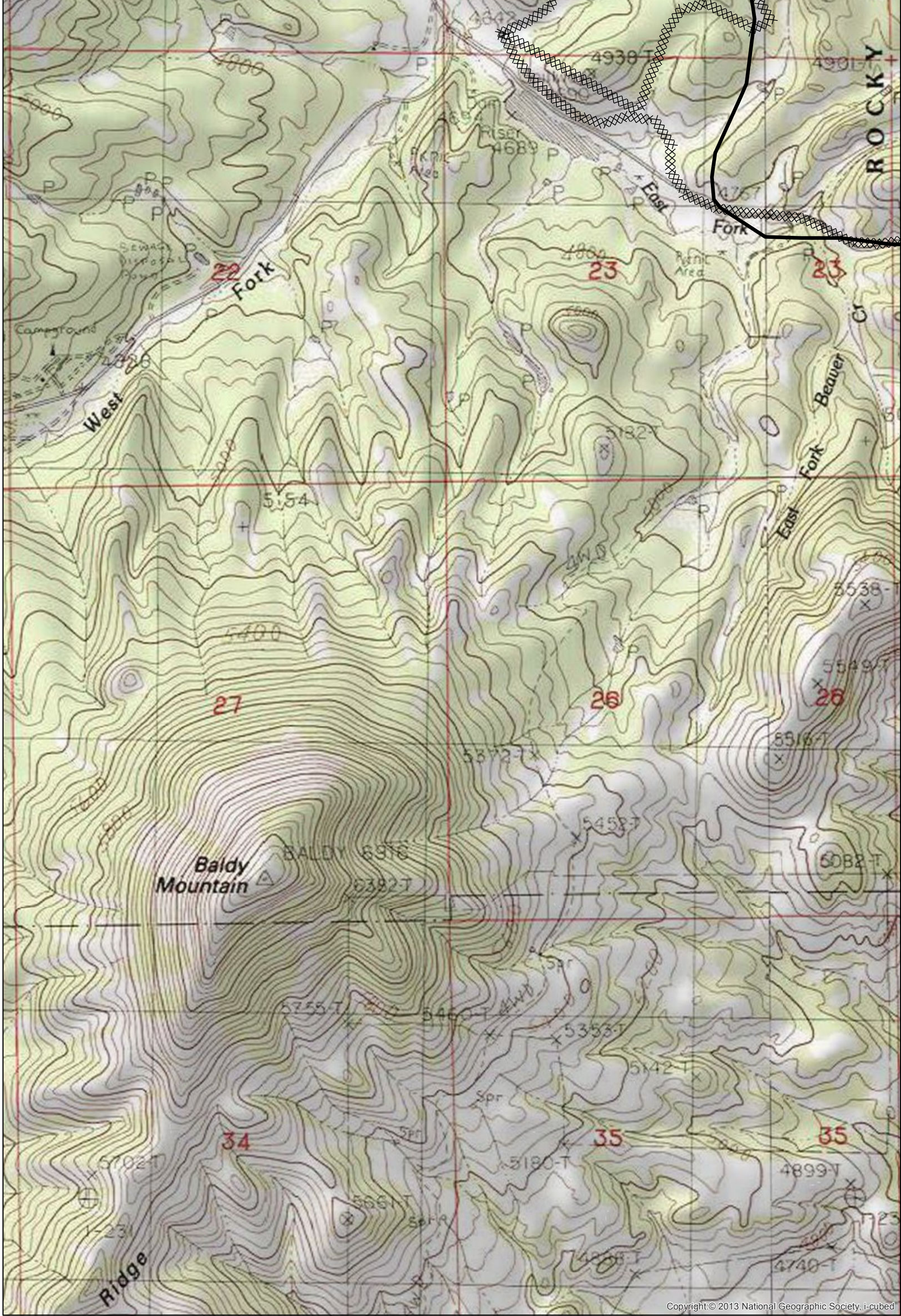
Dozer Line Index

East Fork
 9/8/2017 0630
 21,518 Acres
 Page: 15

- Drop Point
- Helispot
- ▣ Incident Command Post
- ⊙ Staging Area
- ⊙ Water Source
- ⌋ Division Break
- ⊙ Sling Site
- ⊙ Repeater
- ▬ Uncontrolled Fire Edge
- ▬ Completed Line
- ▭ County boundary
- ▭ Rocky Boy Reservation



Map created Sept 6, 2017 1930 hrs
 NAD83 UTM Zone 12N

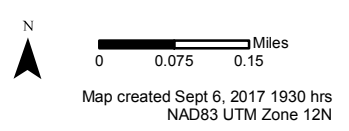


Copyright © 2013 National Geographic Society, i-cubed

Dozer Line Index

East Fork
 9/8/2017 0630
 21,518 Acres
 Page: 16

- Drop Point
- Helispot
- ▣ Incident Command Post
- ⊙ Staging Area
- ⊙ Water Source
- ⌋ Division Break
- ⊙ Sling Site
- ⊙ Repeater
- ▬ Uncontrolled Fire Edge
- ▬ Completed Line
- ▭ County boundary
- ▭ Rocky Boy Reservation





Copyright © 2013 National Geographic Society, i-cubed

Dozer Line Index

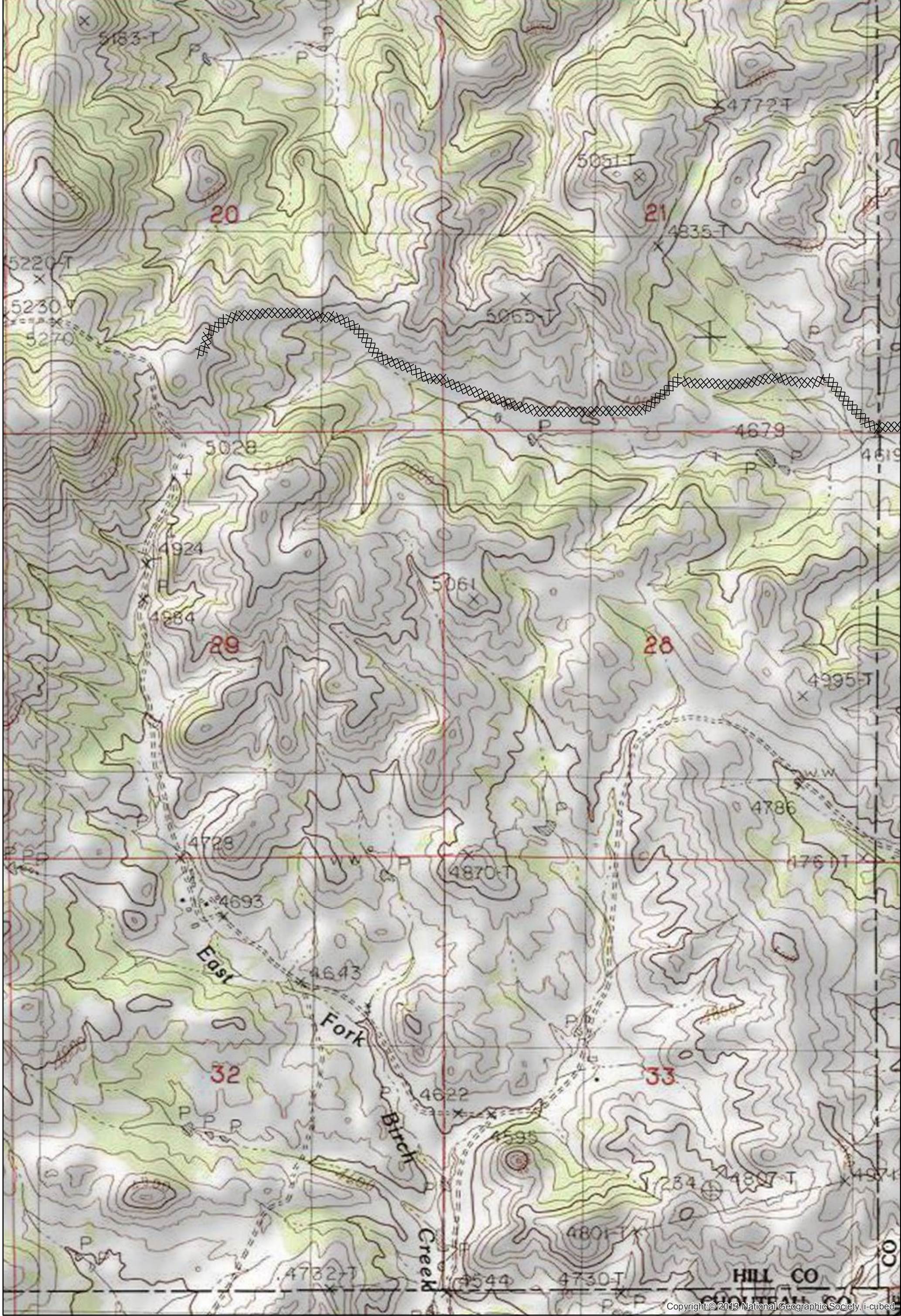
East Fork
 9/8/2017 0630
 21,518 Acres
 Page: 17

- Drop Point
- Helispot
- ▣ Incident Command Post
- Ⓢ Staging Area
- Ⓜ Water Source
-) Division Break
- ⚙ Sling Site
- Ⓡ Repeater
- ▬ Uncontrolled Fire Edge
- ▬ Completed Line
- ▭ County boundary
- ▭ Rocky Boy Reservation

N

0 0.075 0.15 Miles

Map created Sept 6, 2017 1930 hrs
 NAD83 UTM Zone 12N



Dozer Line Index

East Fork
 9/8/2017 0630
 21,518 Acres
 Page: 18

- Drop Point
- Helispot
- ▣ Incident Command Post
- ⊙ Staging Area
- ⊙ Water Source
-) Division Break
- ⊙ Sling Site
- ⊙ Repeater
- ▬ Uncontrolled Fire Edge
- ▬ Completed Line
- ▭ County boundary
- ▭ Rocky Boy Reservation

N

 0 0.075 0.15 Miles
 Map created Sept 6, 2017 1930 hrs
 NAD83 UTM Zone 12N

Copyright © 2013 National Geographic Society, i-cubed



Copyright © 2013 National Geographic Society, i-cubed

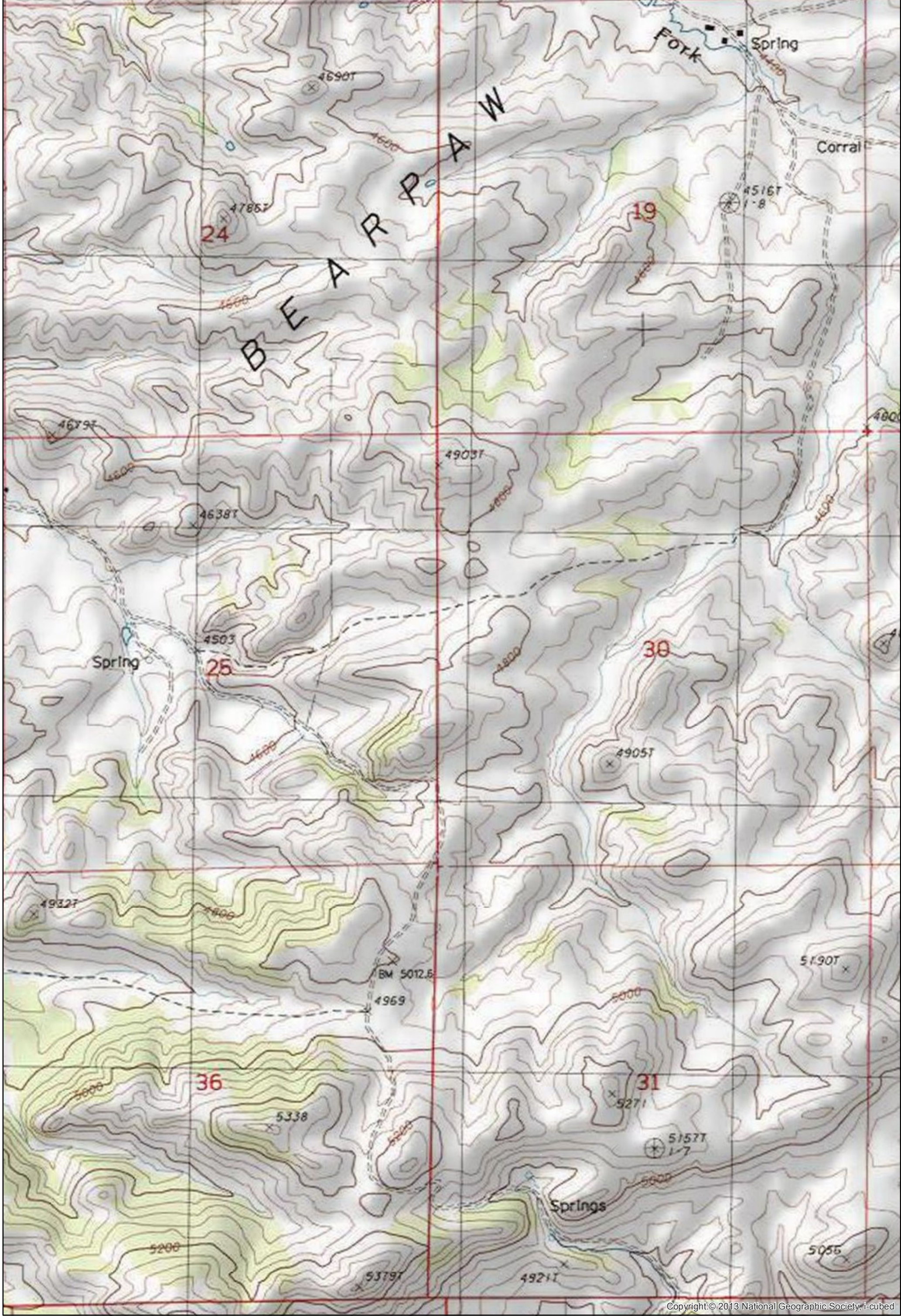
Dozer Line Index

East Fork
9/8/2017 0630
21,518 Acres
Page: 19

- Drop Point
- Helispot
- ▣ Incident Command Post
- ⊙ Staging Area
- ⊕ Water Source
- ⌋ Division Break
- ⚙ Sling Site
- Ⓡ Repeater
- ▬ Uncontrolled Fire Edge
- ▬ Completed Line
- ▭ County boundary
- ▭ Rocky Boy Reservation



0 0.075 0.15 Miles
Map created Sept 6, 2017 1930 hrs
NAD83 UTM Zone 12N



Copyright © 2013 National Geographic Society, i-cubed

Dozer Line Index

East Fork
 9/8/2017 0630
 21,518 Acres
 Page: 20

- Drop Point
- Helispot
- ▣ Incident Command Post
- ⊙ Staging Area
- ⊙ Water Source

-) Division Break
- ⊙ Sling Site
- ⊙ Repeater

- ▬ Uncontrolled Fire Edge
- ▬ Completed Line
- ▭ County boundary
- ▭ Rocky Boy Reservation



0 0.075 0.15 Miles

Map created Sept 6, 2017 1930 hrs
 NAD83 UTM Zone 12N