

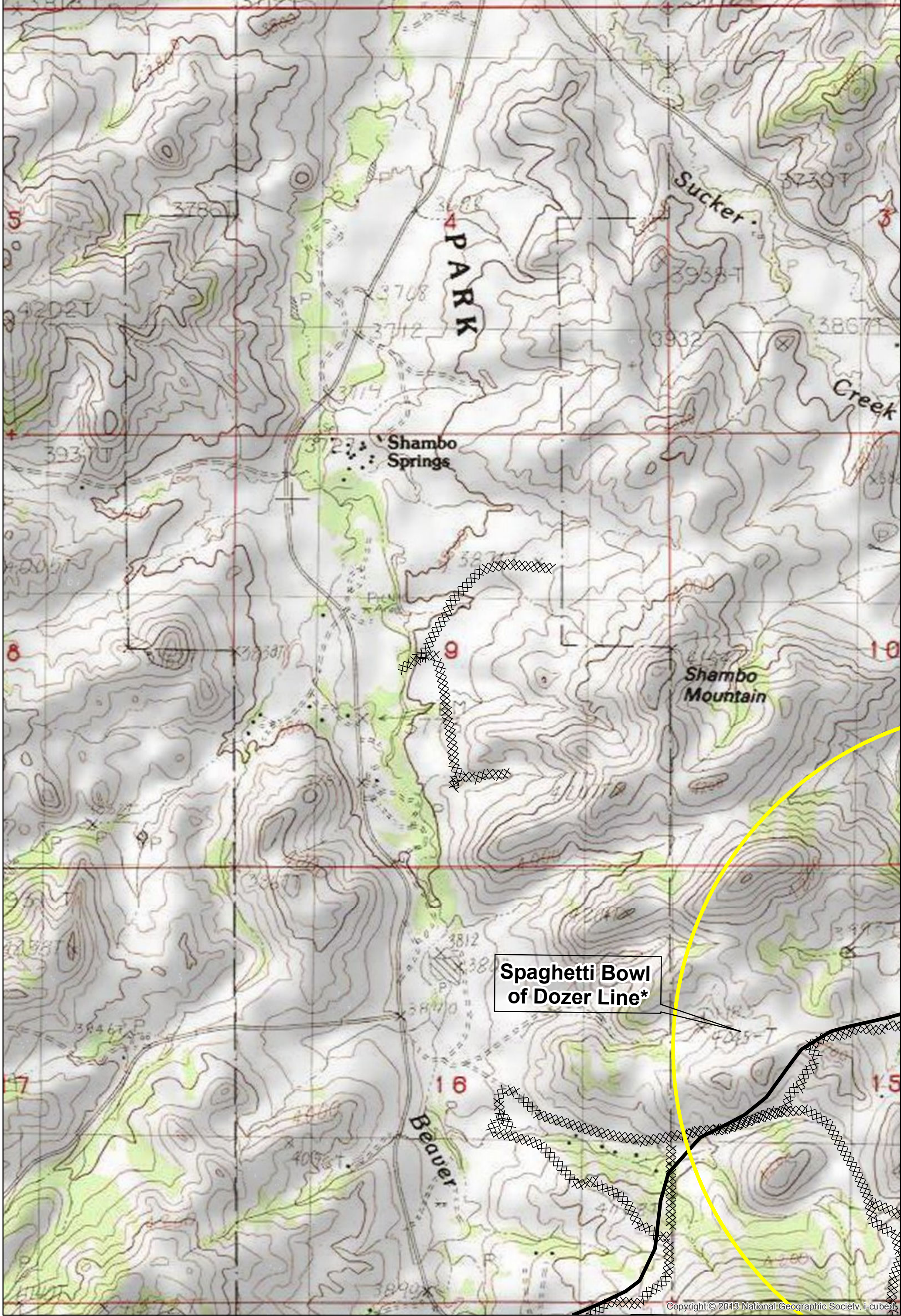
Copyright: © 2013 National Geographic Society, I-cubed

**Dozer Line Index  
Hill County**

East Fork  
9/8/2017 0630  
21,518 Acres

\*Spaghetti Bowl has many unmapped sections of dozer line.





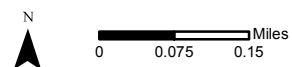
Copyright © 2013 National Geographic Society, i-cubed

**Dozer Line Index**

East Fork  
9/8/2017 0630  
21,518 Acres  
Page: 1

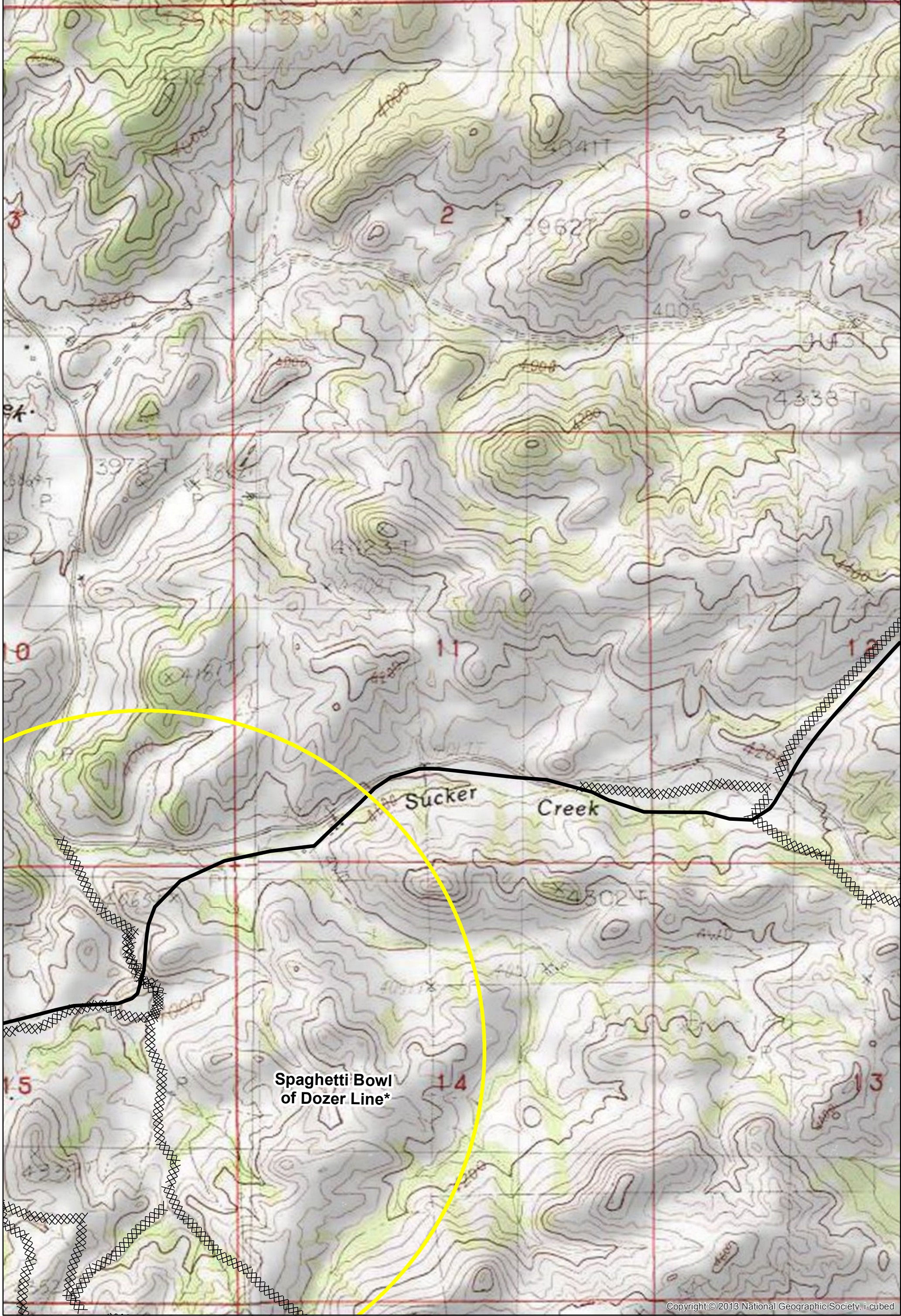
- Drop Point
- Helispot
- ▣ Incident Command Post
- ⊙ Staging Area
- ⊙ Water Source
- ⌋ Division Break
- ⊙ Sling Site
- ⊙ Repeater
- ▬ Uncontrolled Fire Edge
- ▬ Completed Line
- ▭ County boundary
- ▭ Rocky Boy Reservation

\*Spaghetti Bowl has many unmapped sections of dozer line.



Map created Sept 7, 2017 1930 hrs  
NAD83 UTM Zone 12N





Copyright © 2013 National Geographic Society. i-cubed

**Dozer Line Index**

East Fork  
9/8/2017 0630  
21,518 Acres  
Page: 2

- Drop Point
- Helispot
- ▣ Incident Command Post
- Ⓢ Staging Area
- Ⓜ Water Source
- ⌋ Division Break
- ⚙ Sling Site
- Ⓡ Repeater
- ▬ Uncontrolled Fire Edge
- ▬ Completed Line
- ▭ County boundary
- ▭ Rocky Boy Reservation

\*Spaghetti Bowl has many unmapped sections of dozer line.



Map created Sept 7, 2017 1930 hrs  
NAD83 UTM Zone 12N



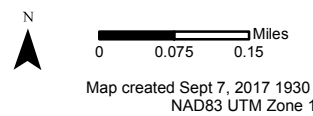


Copyright © 2013 National Geographic Society, i-cubed

**Dozer Line Index**

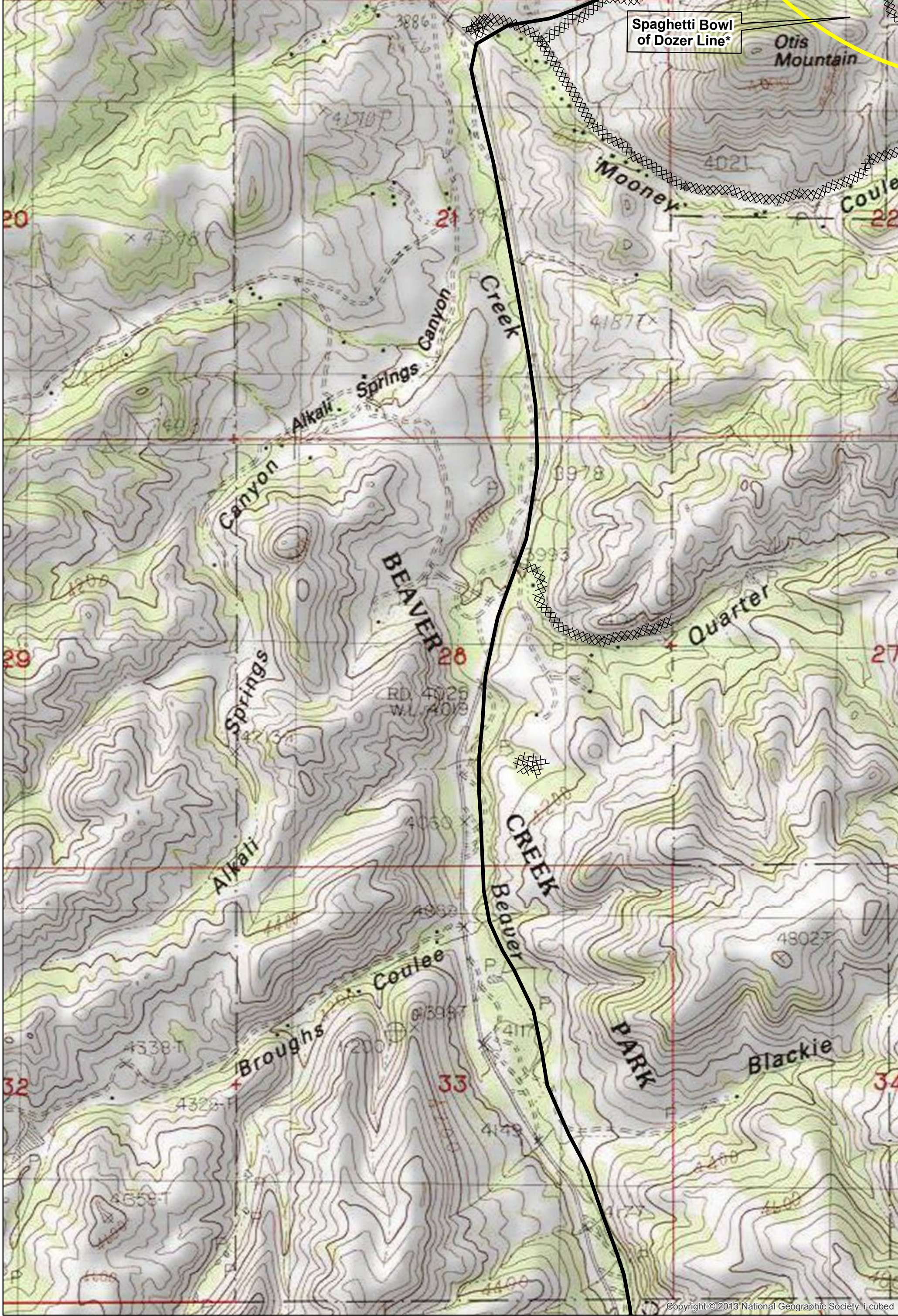
East Fork  
 9/8/2017 0630  
 21,518 Acres  
 Page: 3

- |                         |                    |                          |
|-------------------------|--------------------|--------------------------|
| ● Drop Point            | ( ) Division Break | ▬ Uncontrolled Fire Edge |
| ● Helispot              | △ Sling Site       | ▬ Completed Line         |
| ▣ Incident Command Post | Ⓜ Repeater         | ▭ County boundary        |
| Ⓢ Staging Area          |                    | ▭ Rocky Boy Reservation  |
| Ⓜ Water Source          |                    |                          |



Map created Sept 7, 2017 1930 hrs  
 NAD83 UTM Zone 12N





Spaghetti Bowl  
of Dozer Line\*

Otis  
Mountain

Mooney

Coulee

Alkali Springs Canyon

Creek

Canyon

BEAVER

Quarter

Springs

Beaver  
CREEK

Alkali

Broughs  
Coulee

PARK

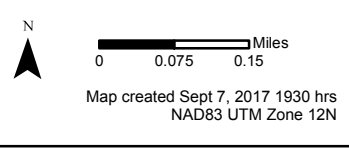
Blackie

**Dozer Line Index**

East Fork  
9/8/2017 0630  
21,518 Acres  
Page: 4

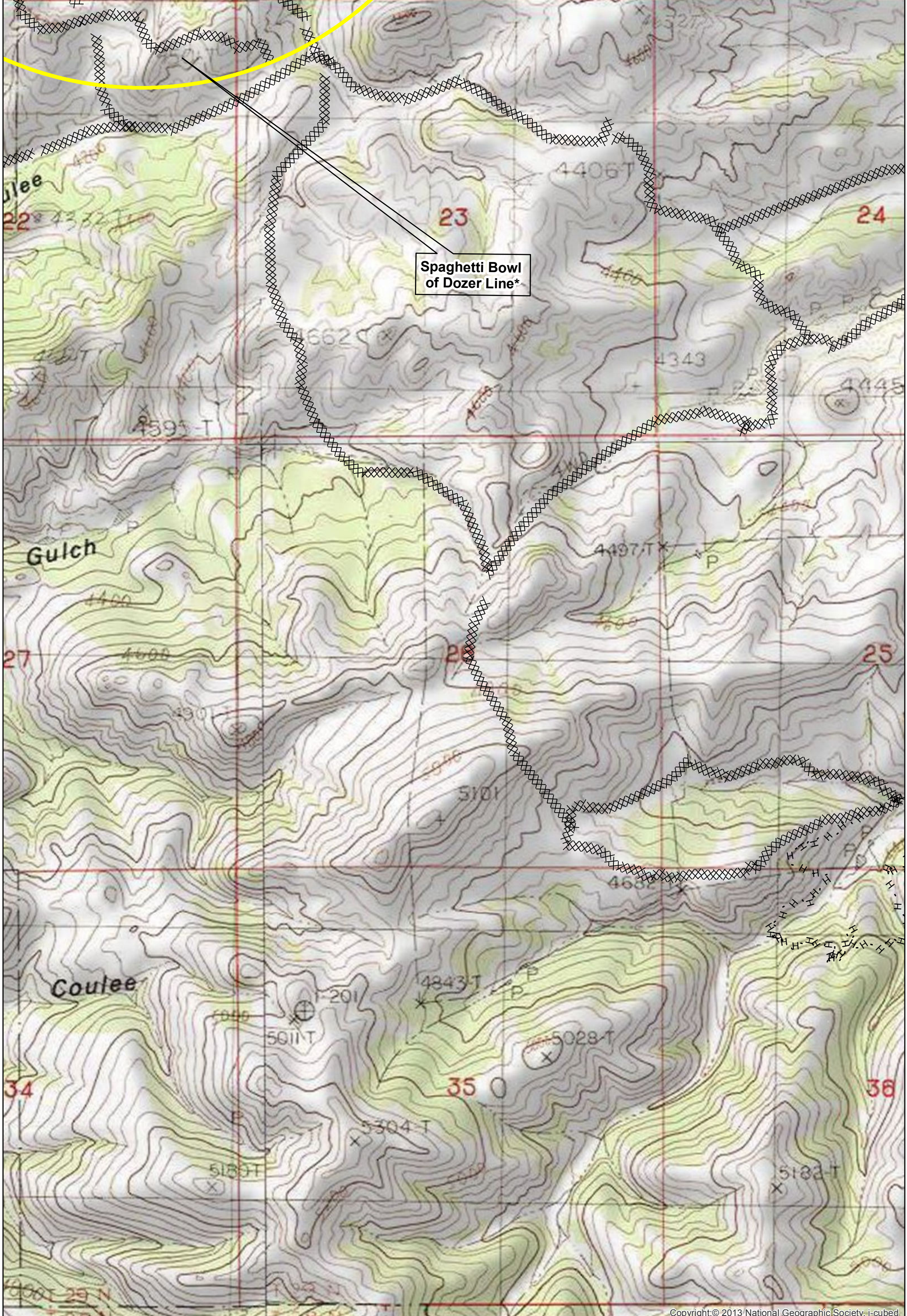
- Drop Point
- Helispot
- ▣ Incident Command Post
- ⊙ Staging Area
- ⊙ Water Source
- ) Division Break
- ⊙ Sling Site
- ⊙ Repeater
- ▬ Uncontrolled Fire Edge
- ▬ Completed Line
- ▭ County boundary
- ▭ Rocky Boy Reservation

\*Spaghetti Bowl has many unmapped sections of dozer line.



Copyright © 2013 National Geographic Society. i-cubed





Spaghetti Bowl of Dozer Line\*

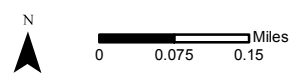
Copyright © 2013 National Geographic Society. i-cubed

**Dozer Line Index**

East Fork  
9/8/2017 0630  
21,518 Acres  
Page: 5

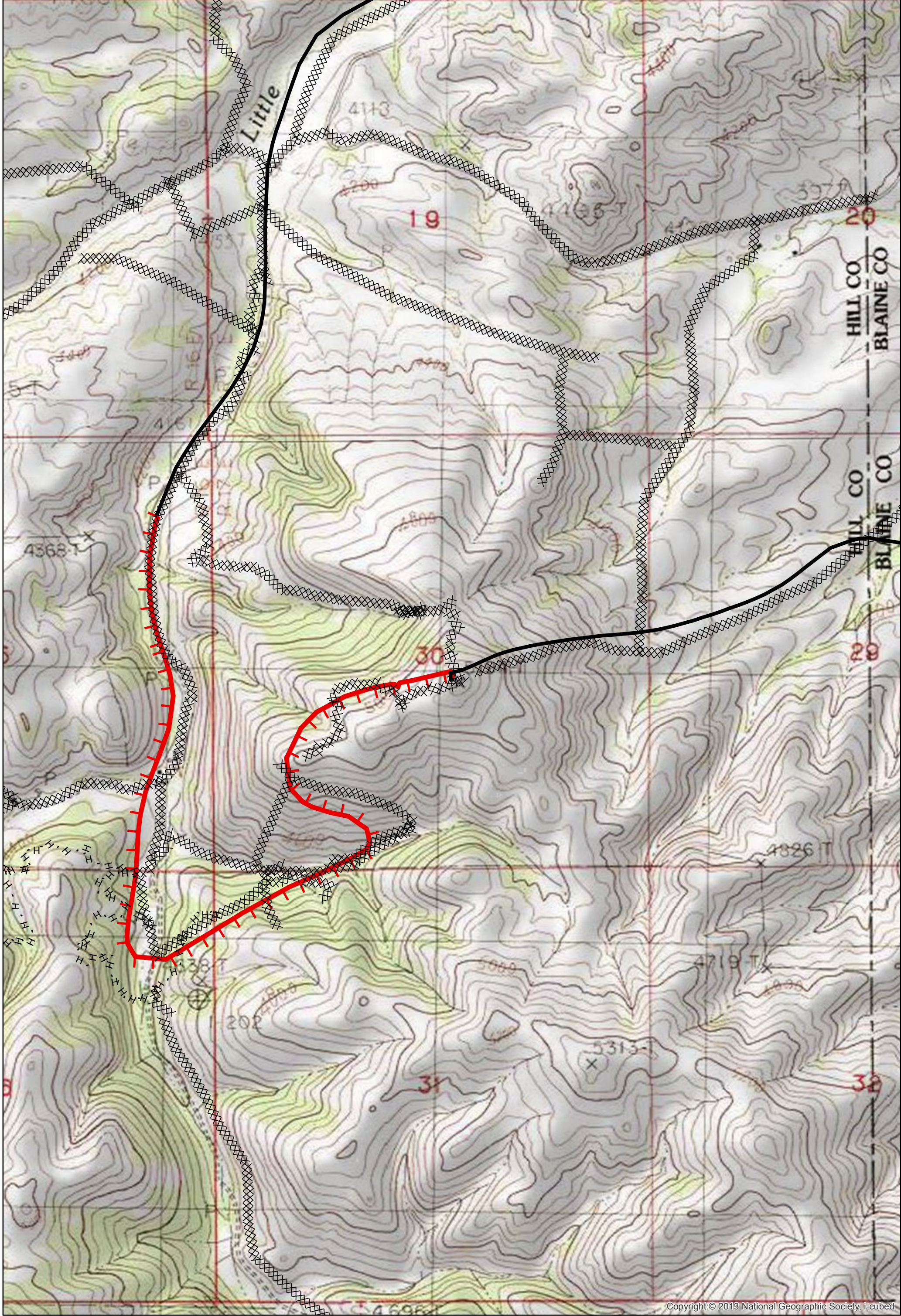
- Drop Point
- Helispot
- ▣ Incident Command Post
- ⊙ Staging Area
- ⊙ Water Source
- ⌋ Division Break
- ⊙ Sling Site
- ⊙ Repeater
- ▬ Uncontrolled Fire Edge
- ▬ Completed Line
- ▭ County boundary
- ▭ Rocky Boy Reservation

\*Spaghetti Bowl has many unmapped sections of dozer line.



Map created Sept 7, 2017 1930 hrs  
NAD83 UTM Zone 12N





Copyright © 2013 National Geographic Society, i-cubed

**Dozer Line Index**

East Fork  
 9/8/2017 0630  
 21,518 Acres  
 Page: 6

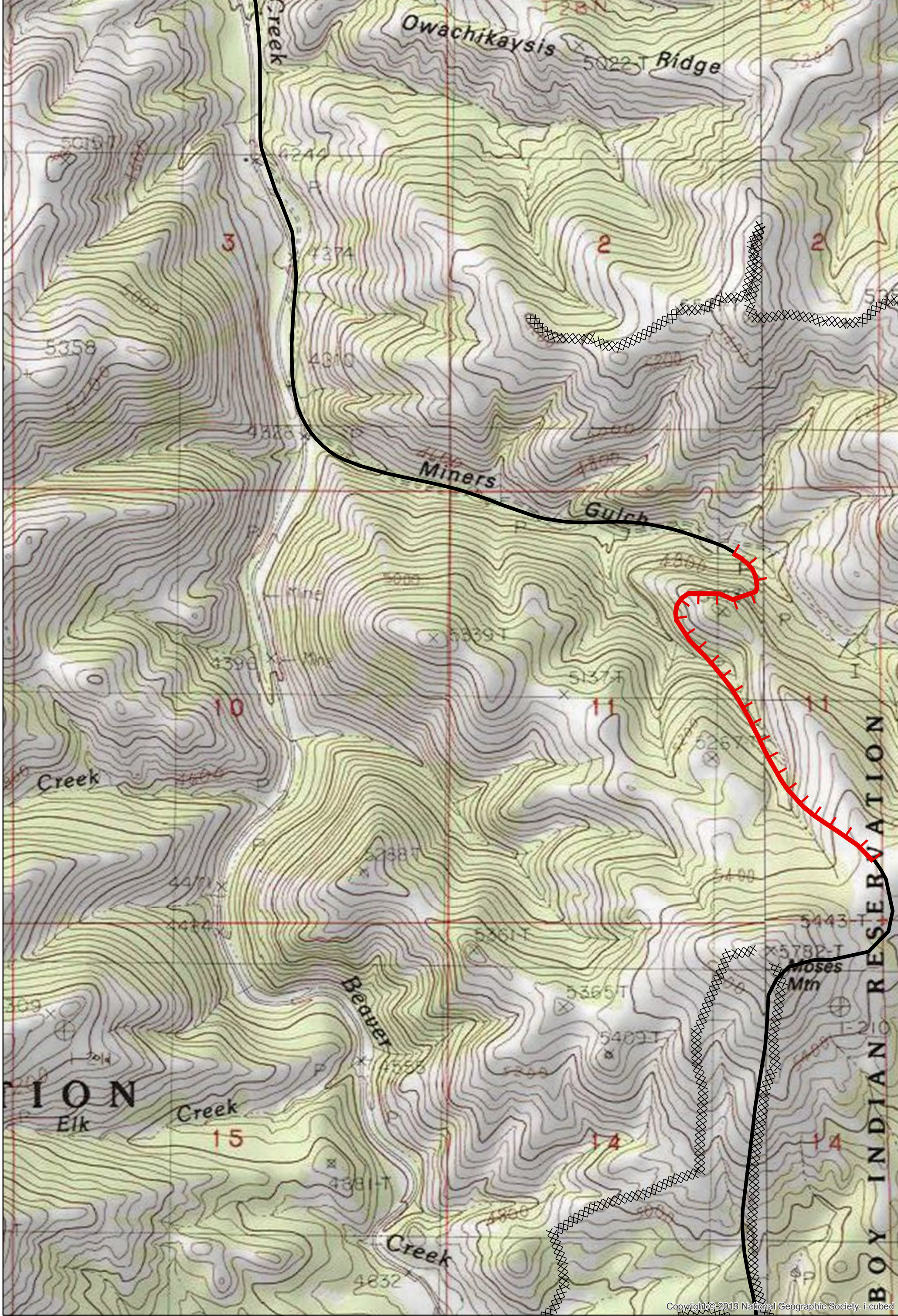
- Drop Point
- Helispot
- ▣ Incident Command Post
- Ⓢ Staging Area
- Ⓜ Water Source
- ) Division Break
- ⚙ Sling Site
- Ⓡ Repeater
- ▬ Uncontrolled Fire Edge
- ▬ Completed Line
- ▭ County boundary
- ▭ Rocky Boy Reservation

N

0 0.075 0.15 Miles

Map created Sept 7, 2017 1930 hrs  
 NAD83 UTM Zone 12N



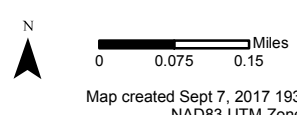


Copyright © 2013 National Geographic Society, i-cubed

**Dozer Line Index**

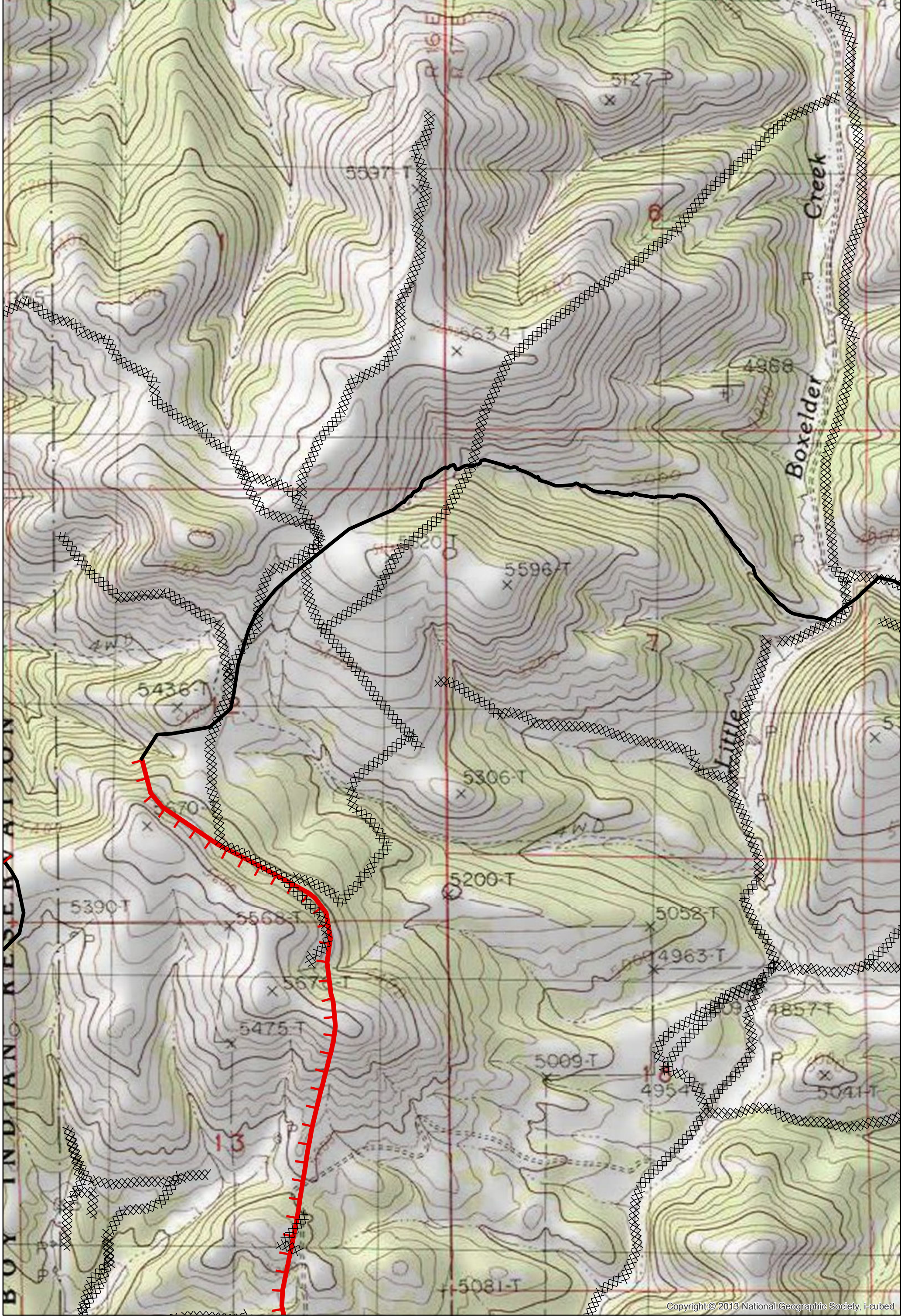
East Fork  
9/8/2017 0630  
21,518 Acres  
Page: 7

- Drop Point
- Helispot
- ▣ Incident Command Post
- ⊙ Staging Area
- ⊙ Water Source
- ) Division Break
- ⊙ Sling Site
- ⊙ Repeater
- ▬ Uncontrolled Fire Edge
- ▬ Completed Line
- ▭ County boundary
- ▭ Rocky Boy Reservation



Map created Sept 7, 2017 1930 hrs  
NAD83 UTM Zone 12N



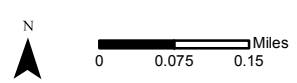


Copyright © 2013 National Geographic Society, i-cubed

**Dozer Line Index**

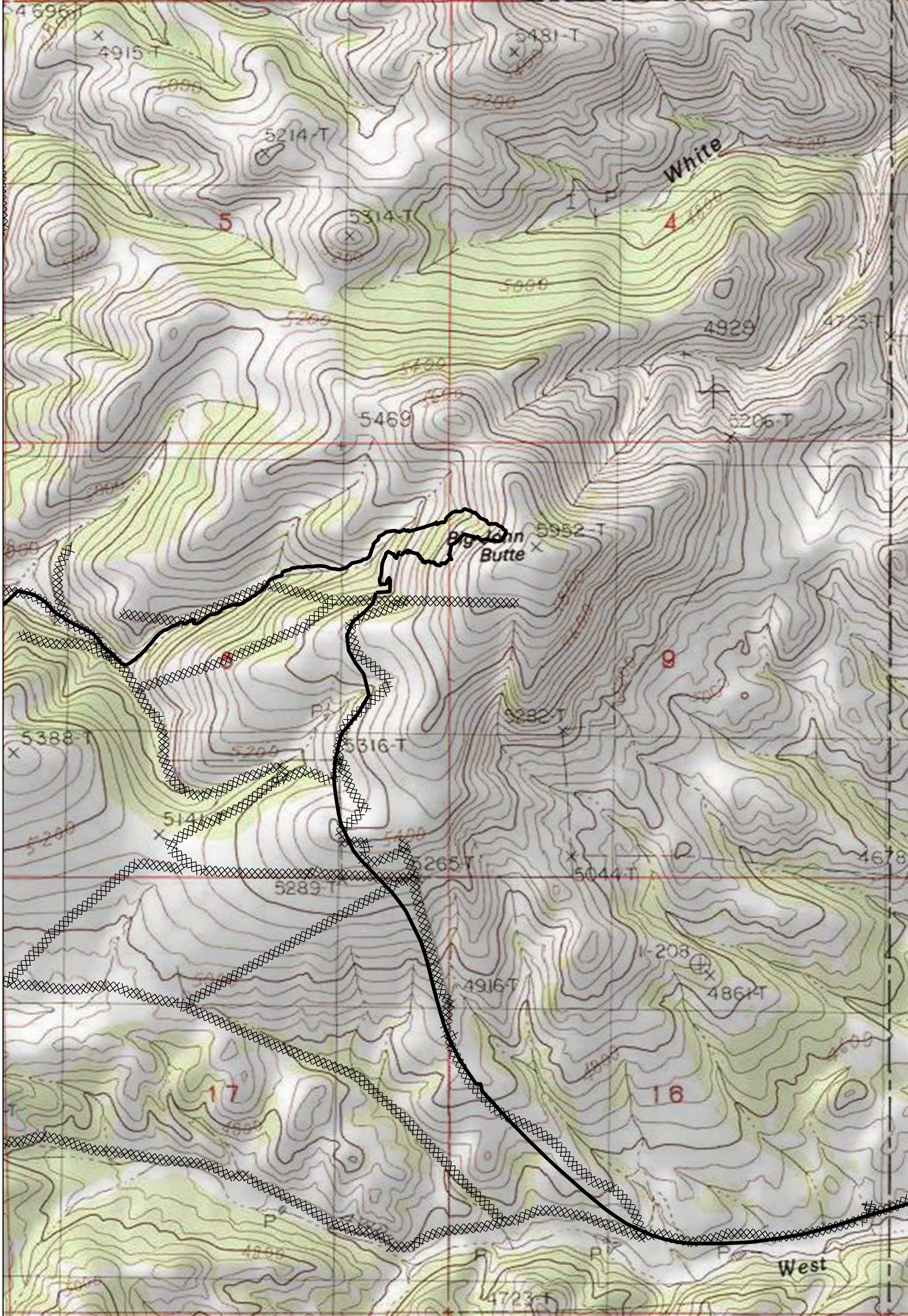
East Fork  
 9/8/2017 0630  
 21,518 Acres  
 Page: 8

- Drop Point
- Helispot
- Incident Command Post
- Ⓢ Staging Area
- Ⓜ Water Source
- ⌘ Division Break
- △ Sling Site
- Ⓡ Repeater
- Uncontrolled Fire Edge
- Completed Line
- ⋯ County boundary
- Rocky Boy Reservation



Map created Sept 7, 2017 1930 hrs  
 NAD83 UTM Zone 12N



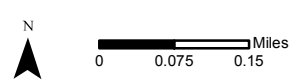


Copyright © 2013 National Geographic Society, i-cubed

**Dozer Line Index**

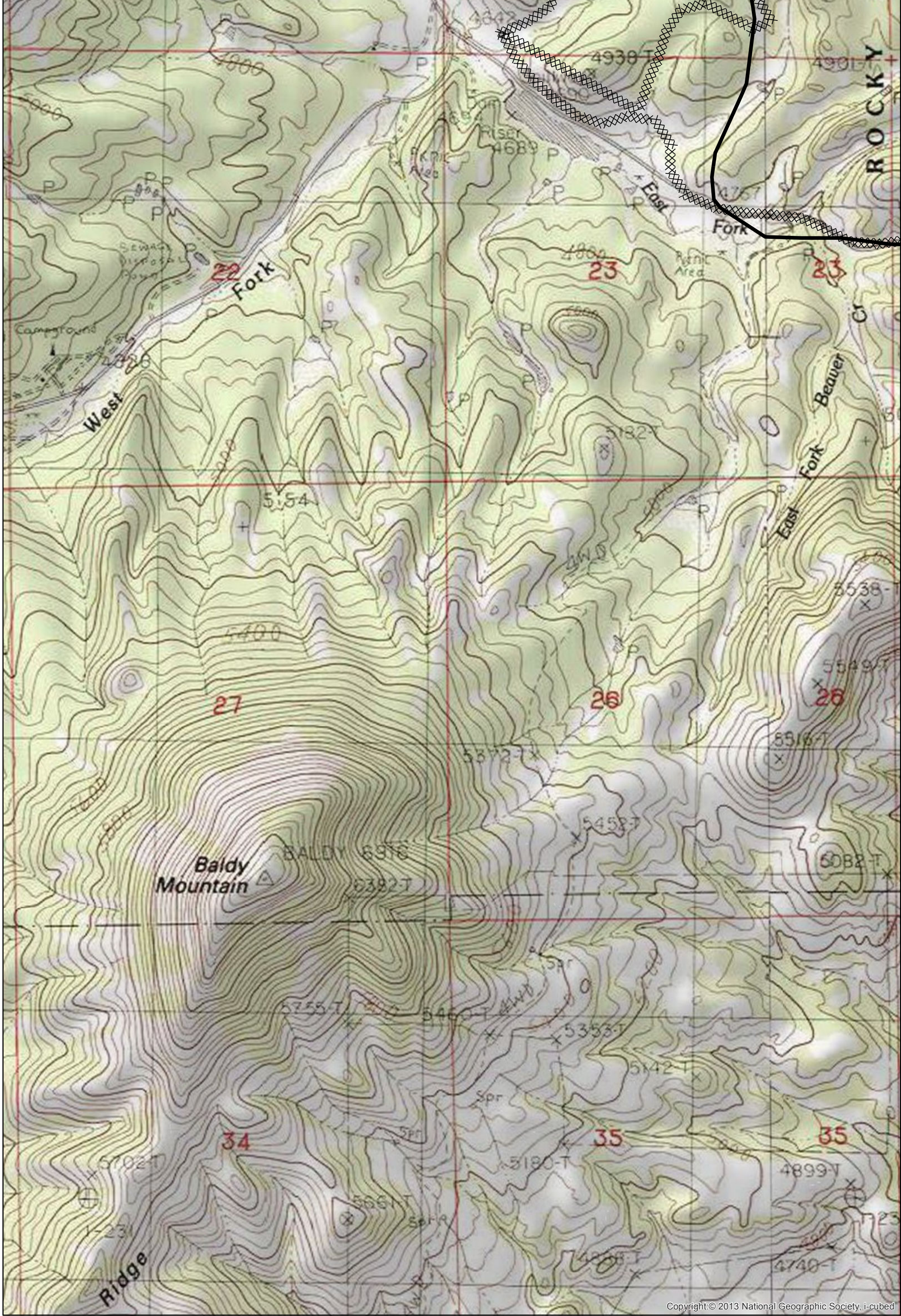
East Fork  
 9/8/2017 0630  
 21,518 Acres  
 Page: 9

- Drop Point
- Helispot
- ▣ Incident Command Post
- Ⓢ Staging Area
- Ⓜ Water Source
- ⌋ Division Break
- ⚙ Sling Site
- Ⓡ Repeater
- ▬ Uncontrolled Fire Edge
- ▬ Completed Line
- ▭ County boundary
- ▭ Rocky Boy Reservation



Map created Sept 7, 2017 1930 hrs  
 NAD83 UTM Zone 12N



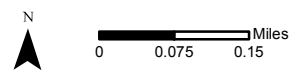


Copyright © 2013 National Geographic Society, i-cubed

**Dozer Line Index**

East Fork  
 9/8/2017 0630  
 21,518 Acres  
 Page: 10

- Drop Point
- Helispot
- ▣ Incident Command Post
- ⊙ Staging Area
- ⊙ Water Source
- ⌋ Division Break
- ⊙ Sling Site
- ⊙ Repeater
- ⌋ Uncontrolled Fire Edge
- Completed Line
- ▭ County boundary
- ▭ Rocky Boy Reservation



Map created Sept 7, 2017 1930 hrs  
 NAD83 UTM Zone 12N





Copyright © 2013 National Geographic Society, i-cubed

**Dozer Line Index**

East Fork  
9/8/2017 0630  
21,518 Acres  
Page: 11

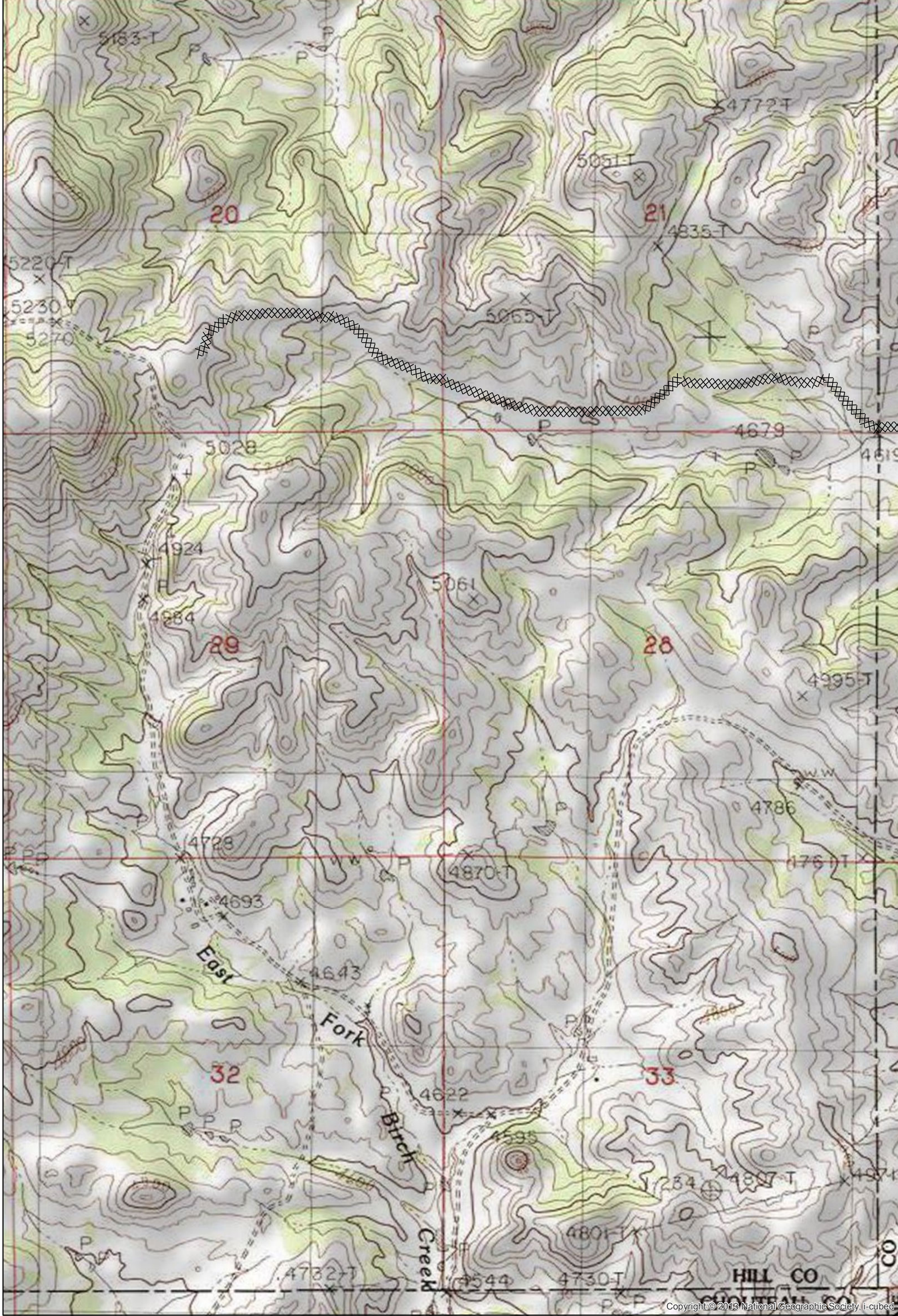
- Drop Point
- Helispot
- Incident Command Post
- Staging Area
- Water Source
- Division Break
- Sling Site
- Repeater
- Uncontrolled Fire Edge
- Completed Line
- County boundary
- Rocky Boy Reservation

N

0 0.075 0.15 Miles

Map created Sept 7, 2017 1930 hrs  
NAD83 UTM Zone 12N





**Dozer Line Index**

East Fork  
 9/8/2017 0630  
 21,518 Acres  
 Page: 12

- Drop Point
- Helispot
- ▣ Incident Command Post
- ⊙ Staging Area
- ⊙ Water Source
- ) Division Break
- ⊙ Sling Site
- ⊙ Repeater
- ▬ Uncontrolled Fire Edge
- ▬ Completed Line
- ▭ County boundary
- ▭ Rocky Boy Reservation

N  
  
 0 0.075 0.15 Miles  
 Map created Sept 7, 2017 1930 hrs  
 NAD83 UTM Zone 12N

Copyright © 2013 National Geographic Society, i-cubed