


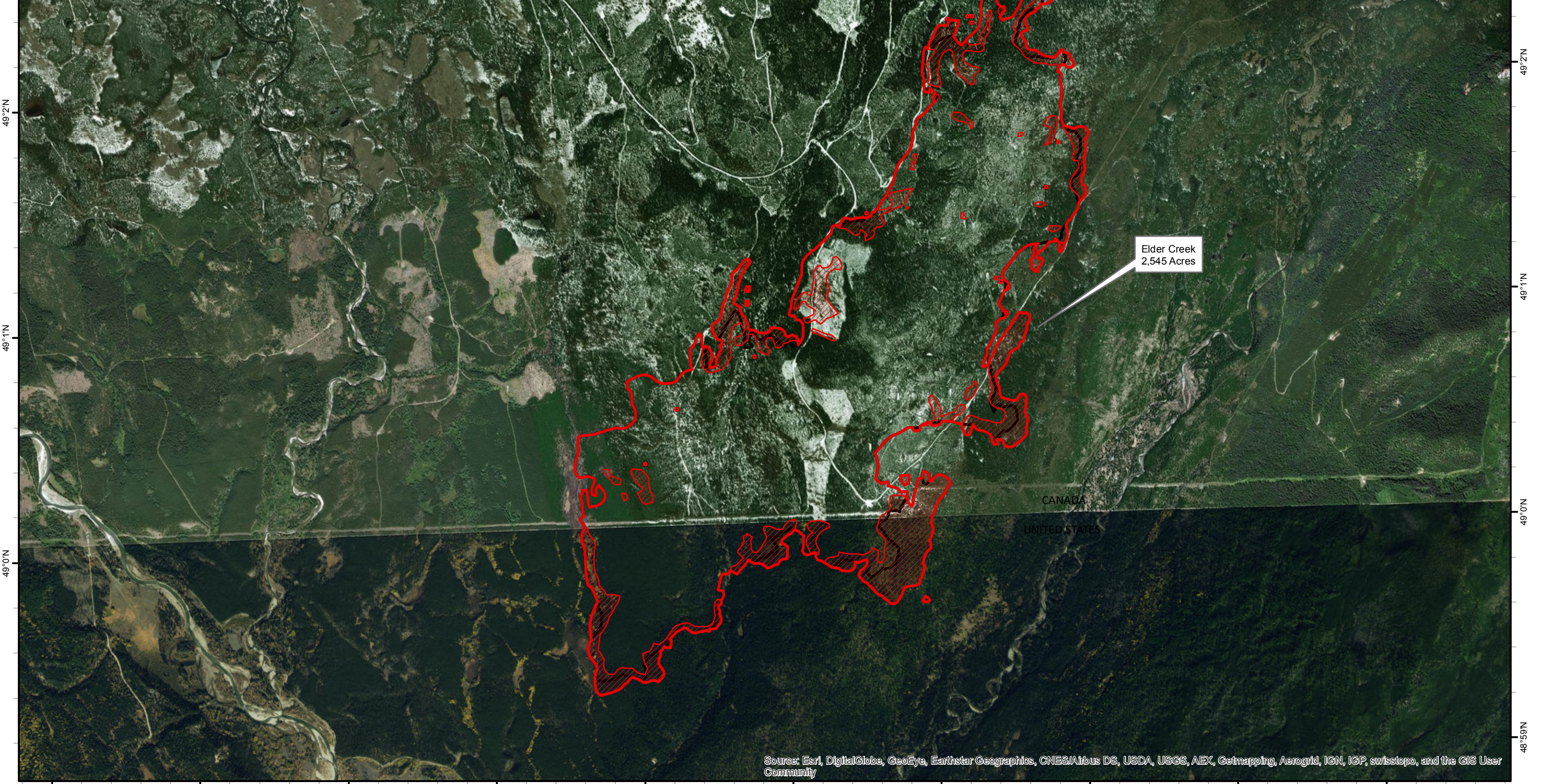
114°29'W 114°28'W 114°27'W 114°26'W 114°25'W 114°24'W 114°23'W 114°22'W 114°21'W 114°20'W 114°19'W

**Infrared Map**  
**Elder Creek (MT-GNP-000737)**  
**Map Date: 09/12/2017**  
**Imagery Date: 09/11/2017**  
**Imagery Time: 2058 MDT**  
**IR Interpreted Acres: 2,545 acres**  
**IRIN: Tina Rotenbury**

- Isolated Heat Sources
- ▭ Heat Perimeter
- ▨ Intense Heat
- ▤ Scattered Heat
- ▭ Previous Heat Perimeter

NAD 1983 UTM zone 11N

0 0.25 0.5 1 Miles

Elder Creek  
2,545 Acres

CANADA  
UNITED STATES

114°29'W 114°28'W 114°27'W 114°26'W 114°25'W 114°24'W 114°23'W 114°22'W 114°21'W 114°20'W

Source: Esri, DigitalGlobe, GeoEye, Earthstar Geographics, CNES/Airbus DS, USDA, USGS, AEX, Getmapping, Aerogrid, IGN, IGP, swisstopo, and the GIS User Community

49°3'N  
49°2'N  
49°1'N  
49°0'N  
48°59'N