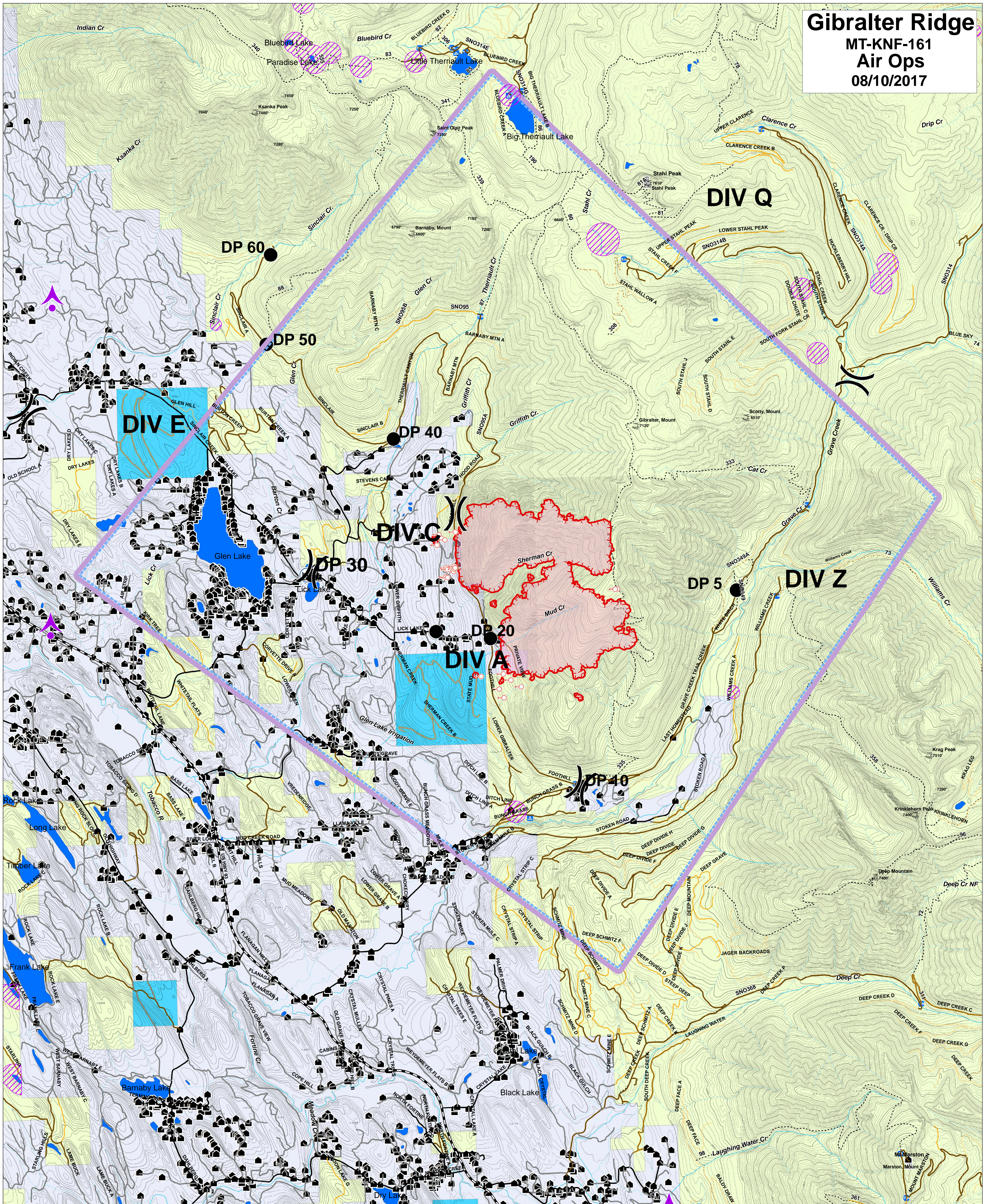


# Gibraltar Ridge

MT-KNF-161

Air Ops

08/10/2017



<b>Legend</b>	<b>Forest Roads</b>	<b>Developed Rec Sites</b>	<b>Peaks</b>	<b>Recommended Wilderness</b>	<b>Uncontrolled Fire Edge</b>	<b>Aerial Retardant Avoidance</b>
Roads	Open	Campground	Lookouts	Wilderness Study Area	Spot Fire	Comm Towers
County	Gated	Picnic Site	Lakes	OWNER	Drop Point	TFR
Local, Private	Barriered	Lookout/Cabin	Major Stream	FS	Division	Helibase
State Highways	Impassable	Trailheads	Intermittent Stream	MT State	Water Source	
State Lands	Trails	Structures	Timber Sale	Private		
				Plum Creek		

0 1.25 2.5 5 7.5 Miles

