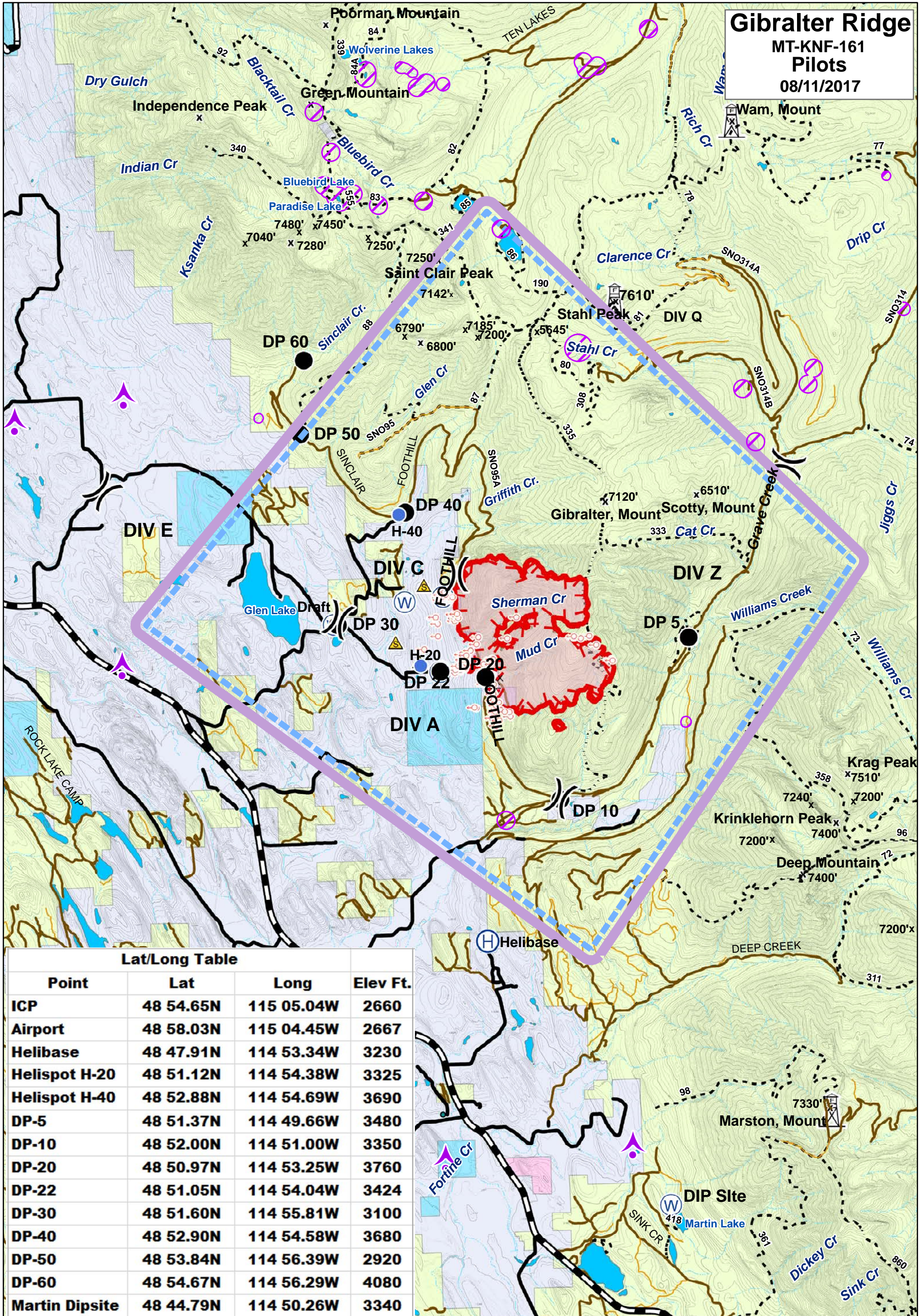


Gibraltar Ridge

MT-KNF-161

Pilots

08/11/2017



Lat/Long Table

Point	Lat	Long	Elev Ft.
ICP	48 54.65N	115 05.04W	2660
Airport	48 58.03N	115 04.45W	2667
Helibase	48 47.91N	114 53.34W	3230
Helispot H-20	48 51.12N	114 54.38W	3325
Helispot H-40	48 52.88N	114 54.69W	3690
DP-5	48 51.37N	114 49.66W	3480
DP-10	48 52.00N	114 51.00W	3350
DP-20	48 50.97N	114 53.25W	3760
DP-22	48 51.05N	114 54.04W	3424
DP-30	48 51.60N	114 55.81W	3100
DP-40	48 52.90N	114 54.58W	3680
DP-50	48 53.84N	114 56.39W	2920
DP-60	48 54.67N	114 56.29W	4080
Martin Dipsite	48 44.79N	114 50.26W	3340

- County
- State Highways
- State Lands
- Forest Roads
- Open
- Gated
- Trails
- Peaks
- Lookouts
- Lakes
- Major Stream
- Intermittent Stream
- Recommended Wilderness
- Wilderness Study Area
- FS
- MT State
- Private
- Plum Creek
- Uncontrolled Fire Edge
- Spot Fire
- Drop Point
- Division
- Water Source
- Helispot
- Helibase
- Aerial Retardant Avoidance
- Comm Towers
- TFR

