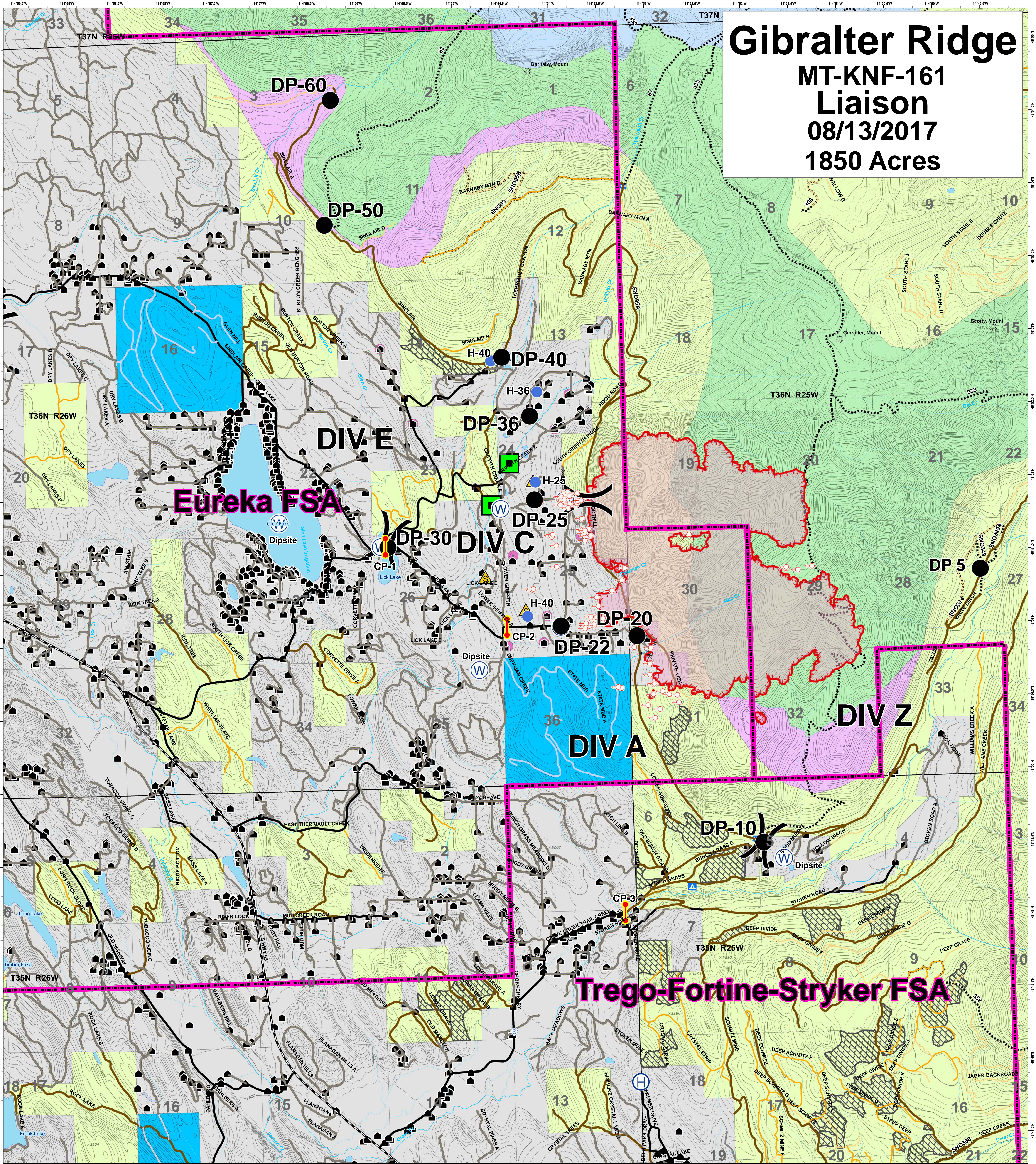


Gibraltar Ridge

MT-KNF-161

Liaison

08/13/2017
1850 Acres



Legend

- | | | | |
|----------------|----------------------------|------------------------|----------------------|
| Roads | Structures | Timber Sale | Division |
| County | Peaks | Ten Lakes Scenic Area | Drop Point |
| Local, Private | Lookouts_clip | Recommended Wilderness | Water Source |
| State Highways | Trailhds_clip | Wilderness Study Area | LEO Checkpoints |
| State Lands | Developed Rec Sites | OWNER | Evacuated Occupied |
| Forest Roads | Campground | FS | Safety Zone |
| Open | Picnic Site | MT State | Wooden Bridge |
| Gated | Lookout/Cabin | Private | Helibase |
| Barriered | Lake_Clip | Plum Creek | Helispot |
| Impassable | Major Stream | Uncontrolled Fire Edge | Fire District Bndrys |
| Trails | Intermittent Stream | Spot Fire | |

