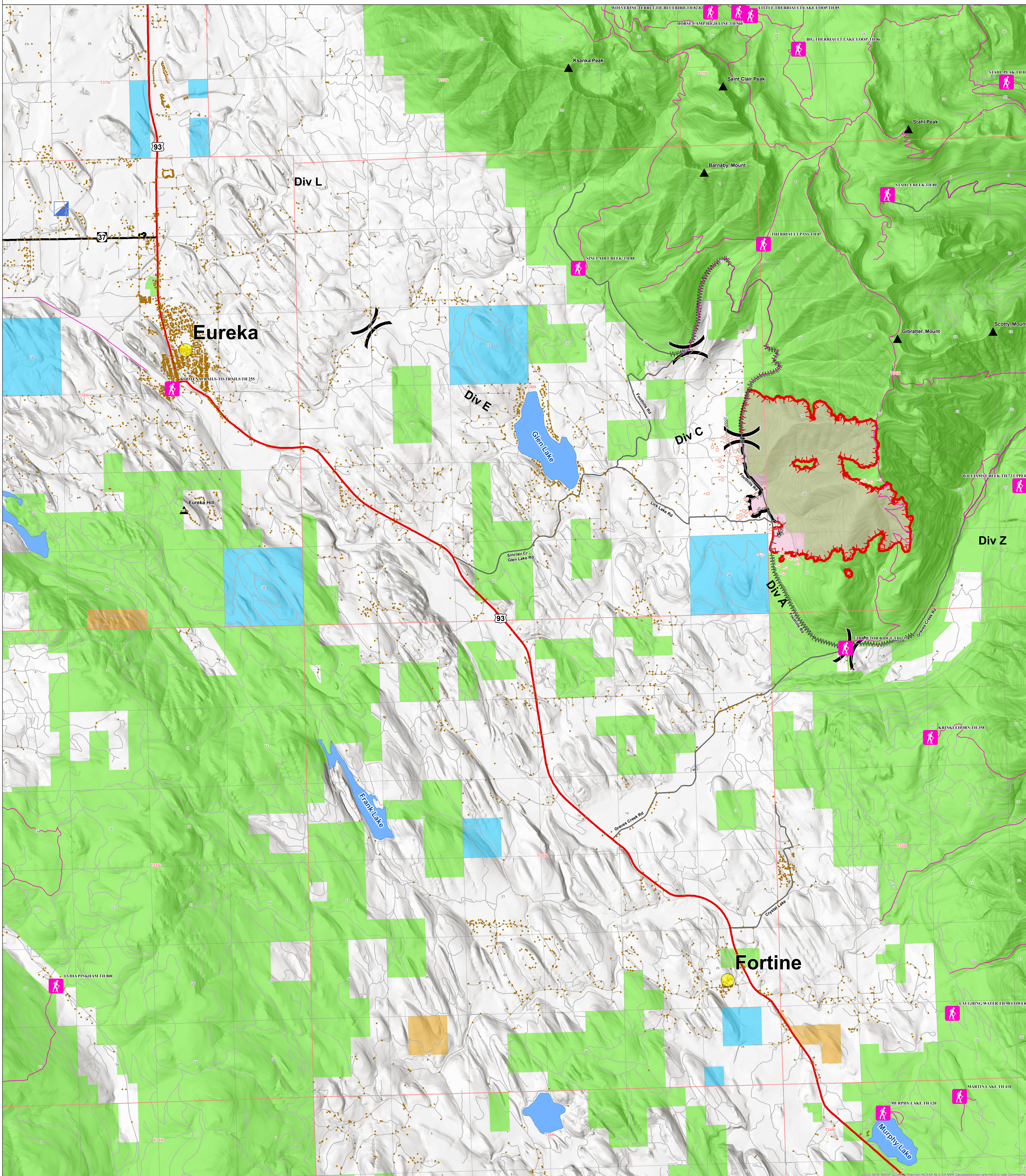




# Information

Gibraltar Ridge Fire  
MT-KNF-000161



FS	Cities	US Hwy or Route	Uncontrolled Fire Edge	Incident Command Post
MT State	Trailhead	State Hwy	Completed Dozer Line	Spot Fire
Plum Creek	Trails	Primary Travel Route	Completed Line	Staging Area
Private	Structure	Other Road	Hand Line	
Water	Mtn. top		Line Break Completed	

**Fire Size:**  
1938 acres as of  
8/13/2017 @ 0900

**Containment: 12%**

