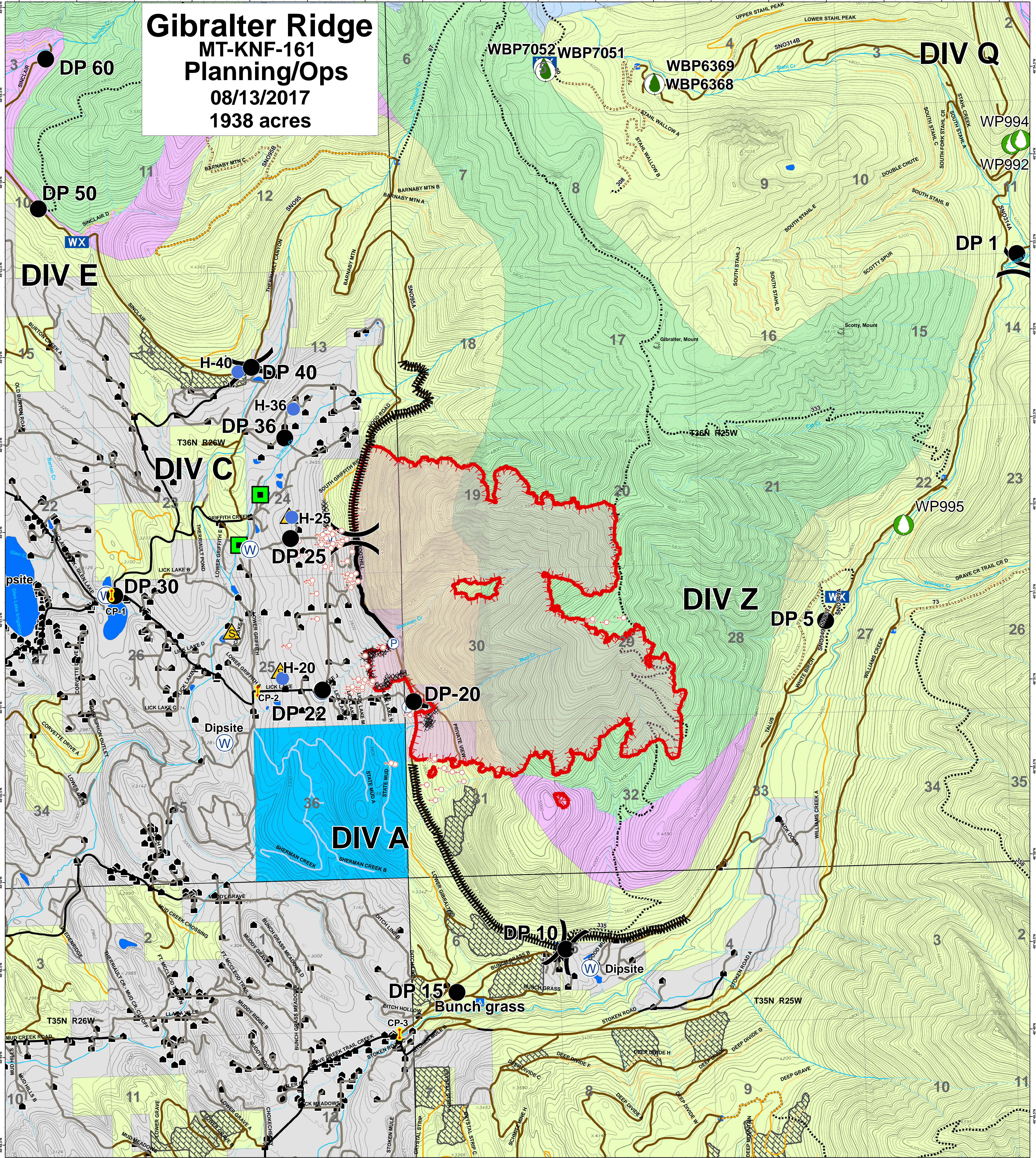


# Gibraltar Ridge MT-KNF-161 Planning/Ops 08/13/2017 1938 acres



### Legend

- |                |                     |                        |                      |
|----------------|---------------------|------------------------|----------------------|
| Roads          | Structures          | Timber Sale            | Completed Line       |
| County         | Peaks               | Ten Lakes Scenic Area  | Completed Dozer Line |
| Local, Private | Lookouts            | Recommended Wilderness | Line Break Completed |
| State Highways | Trailheads          | Wilderness Study Area  | Division             |
| State Lands    | Developed Rec Sites | OWNER                  | Drop Point           |
| Forest Roads   | Campground          | FS                     | Water Source         |
| Open           | Picnic Site         | MT State               | Helispot             |
| Gated          | Lookout/Cabin       | Private                | Staging Area         |
| Barriered      | Lake_Clip           | Plum Creek             | Pump                 |
| Impassible     | Major Stream        | Uncontrolled Fire Edge | LEO Checkpoints      |
| Trails         | Intermittent Stream | Spot Fire              | Wooden Bridge        |
|                |                     |                        | WWP Plus Trees       |
|                |                     |                        | WBP Plus Trees       |

