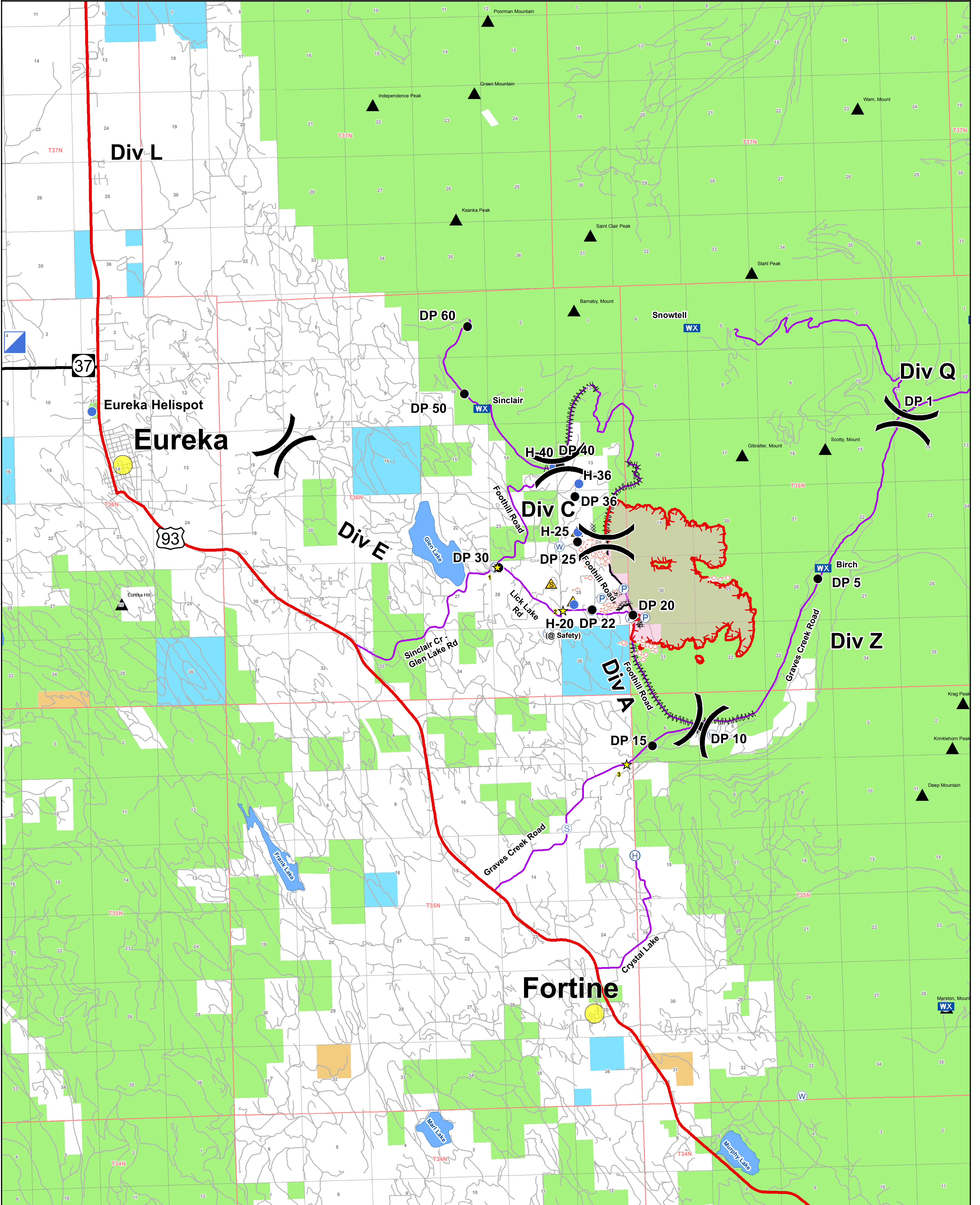




# Travel

## Gibraltar Ridge Fire

### MT-KNF-000161



|            |                      |                       |              |                        |
|------------|----------------------|-----------------------|--------------|------------------------|
| FS         | US Hwy or Route      | Drop Point            | Repeater     | Uncontrolled Fire Edge |
| MT State   | State Hwy            | Helibase              | Safety Zone  | Completed Dozer Line   |
| Plum Creek | Primary Travel Route | Helispot              | Spot Fire    | Completed Line         |
| Private    | Other Road           | Incident Command Post | Staging Area | Hand Line              |
| Water      | Cities               | Mobile Weather Unit   | Water Source | Line Break Completed   |
|            |                      | Pump                  | Checkpoints  |                        |

Containment: 12%

Miles  
0 0.5 1 2

**Fire Size:**  
**1861 acres as of**  
**8/14/2017 @ 2000**