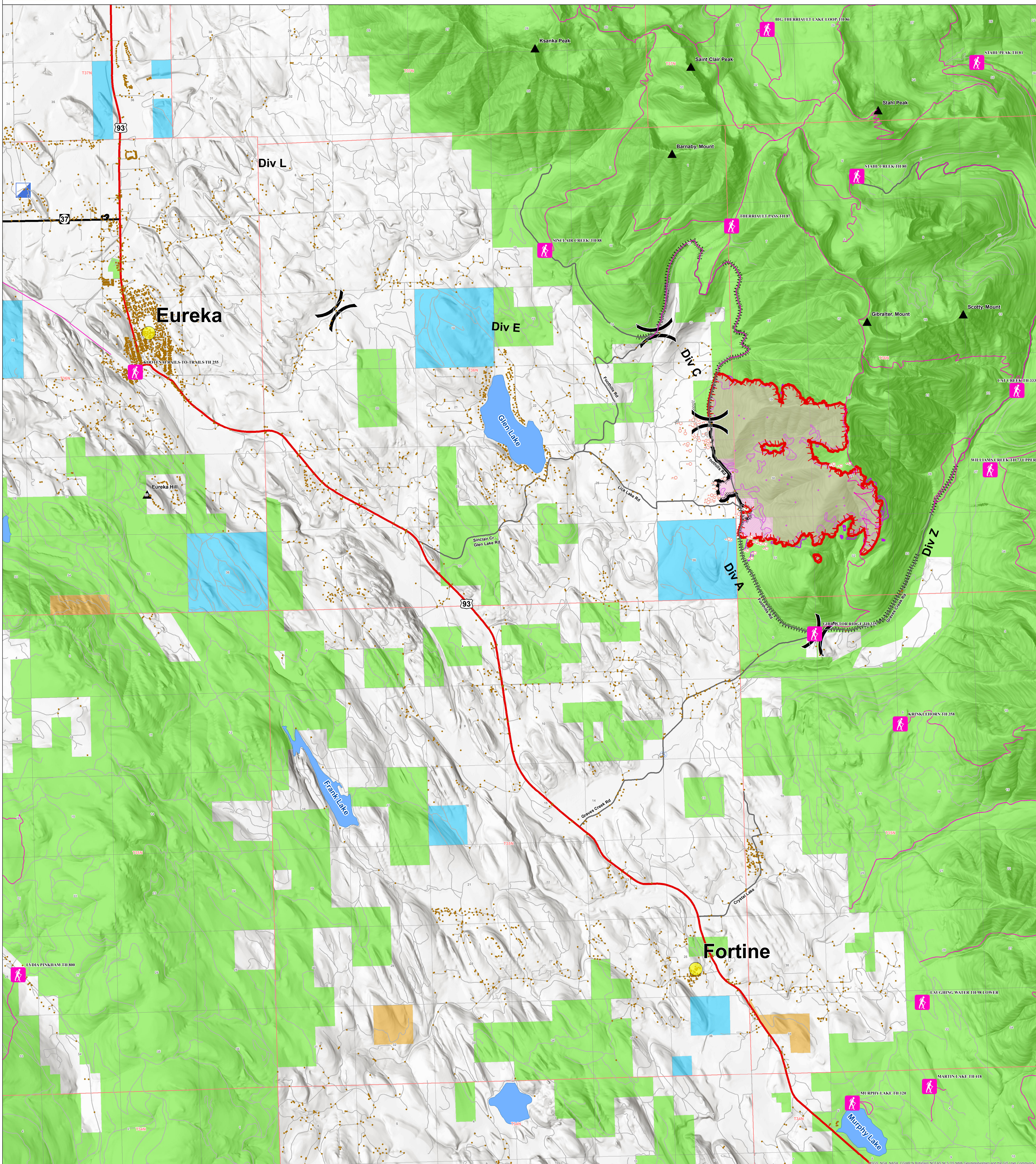




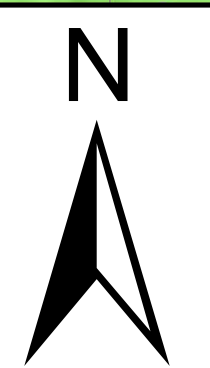
# Information

Gibraltar Ridge Fire  
MT-KNF-000161



FS	Cities	US Hwy or Route	Uncontrolled Fire Edge	Incident Command Post	IR Perimeter
MT State	Trailhead	State Hwy	Completed Dozer Line	Spot Fire	IR Intense Heat
Plum Creek	Trails	Primary Travel Route	Completed Line	IR Scattered Heat	IR Intense Heat
Private	Structure	Other Road	Hand Line	Staging Area	
Water	Mtn. top	Line Break Completed			

**IR flown @ 0123  
on 8/16/2017**



**Containment: 12%**  
**Fire Size:**  
**2021 acres as of**  
**8/16/2017 @ 0123**

