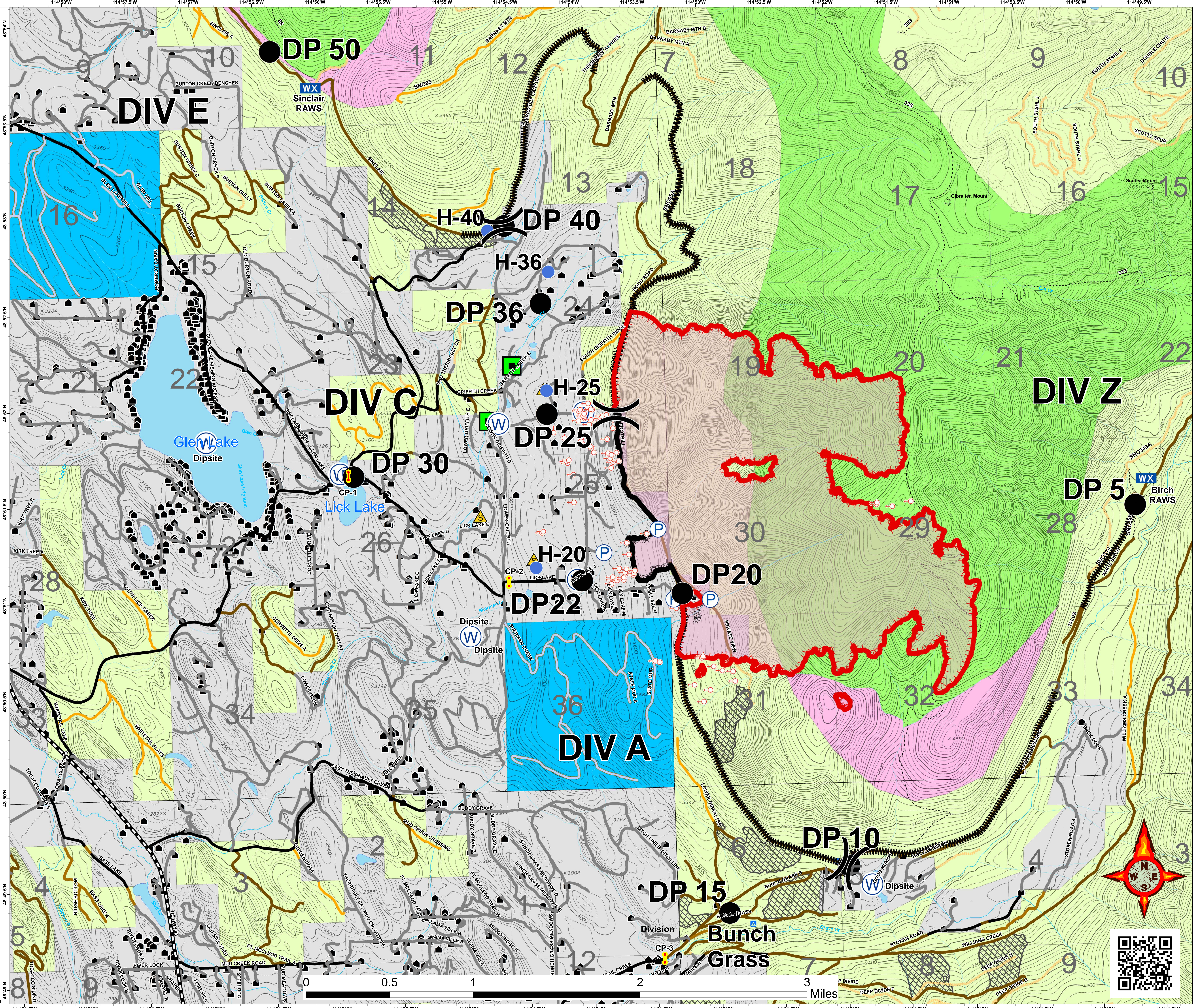




**Gibraltar Ridge
MT-KNF-161
Briefing
08/16/2017
DayShift
1961 acres**

Legend

- Roads**
- County
- Local, Private
- State Highways
- State Lands
- Forest Roads**
- Open
- Gated
- Barriered
- Impassible
- Trails
- Structures
- Peaks
- Lookouts
- Developed Rec Sites**
- Trailheads
- Campground
- Picnic Site
- Lookout/Cabin
- Lake
- Major Stream
- Intermittent Stream
- Timber Sale
- Recommended Wilderness
- Wilderness Study Area
- OWNER**
- FS
- MT State
- Private
- Plum Creek
- Uncontrolled Fire Edge
- Completed Line
- Completed Dozer Line
- Line Break Completed
- Spot Fire
- Water Source
- Drop Point
- Helispot
- Safety Zone
- Division
- Staging Area
- Pump
- Mobile Weather Unit
- LEO Checkpoints
- Wooden Bridge



114°58.5'W 114°58'W 114°57.5'W 114°57'W 114°56.5'W 114°56'W 114°55.5'W 114°55'W 114°54.5'W 114°54'W 114°53.5'W 114°53'W 114°52.5'W 114°52'W 114°51.5'W 114°51'W 114°50.5'W 114°50'W 114°49.5'W