



Gibraltar Ridge
 MT-KNF-161
 IAP
 Day Shift
 08/16/2017

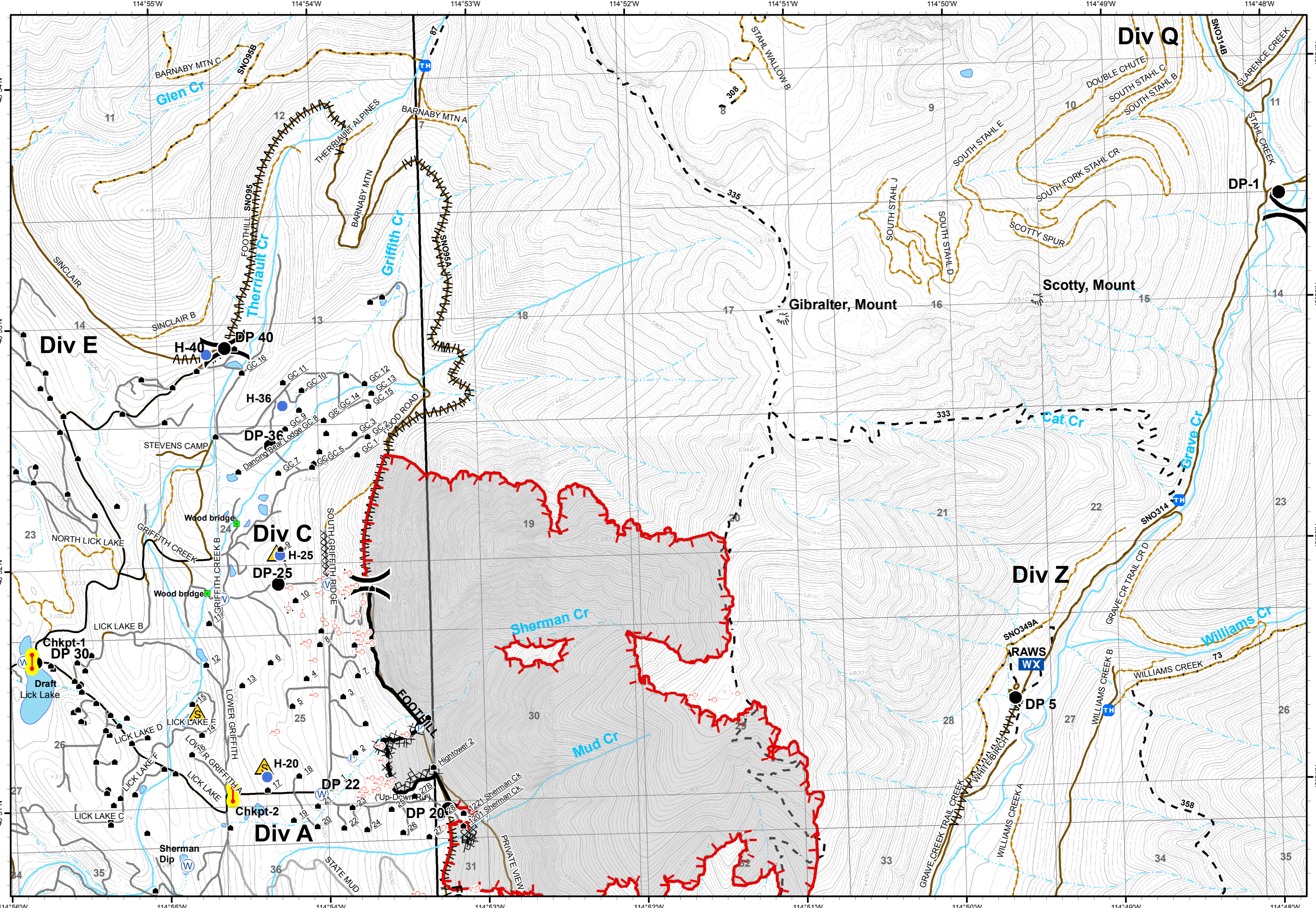
Page 1 of 2

- LEO Checkpoint
- Water Source
- Drop Point
- Hellsport
- Mobile Weather Unit
- Pump
- Safety Zone
- Spot Fire
- Other
- Structures
- Trailheads
- Uncontrolled Fire Edge
- Completed Dozer Line
- Completed Line
- Hand Line
- Line Break Completed
- Roads
 - County
 - Local, Private
 - State Highways
 - State Lands
- Forest Roads
 - Open
 - Gated
 - Barriered/Impassible
- Trails
- Peaks
- Lookouts
- Developed Rec Sites
 - Campground
 - Picnic Site
 - Lookout/Cabin
- Lake
- Major Stream
- Intermittent Stream

0 0.1 0.2 Miles



Date: 8/15/2017
 Time: 8:57:11 PM
 User Name: sladams



114°56'W 114°55'W 114°54'W 114°53'W 114°52'W 114°51'W 114°50'W 114°49'W 114°48'W

48°54'N 48°53'N 48°52'N 48°51'N