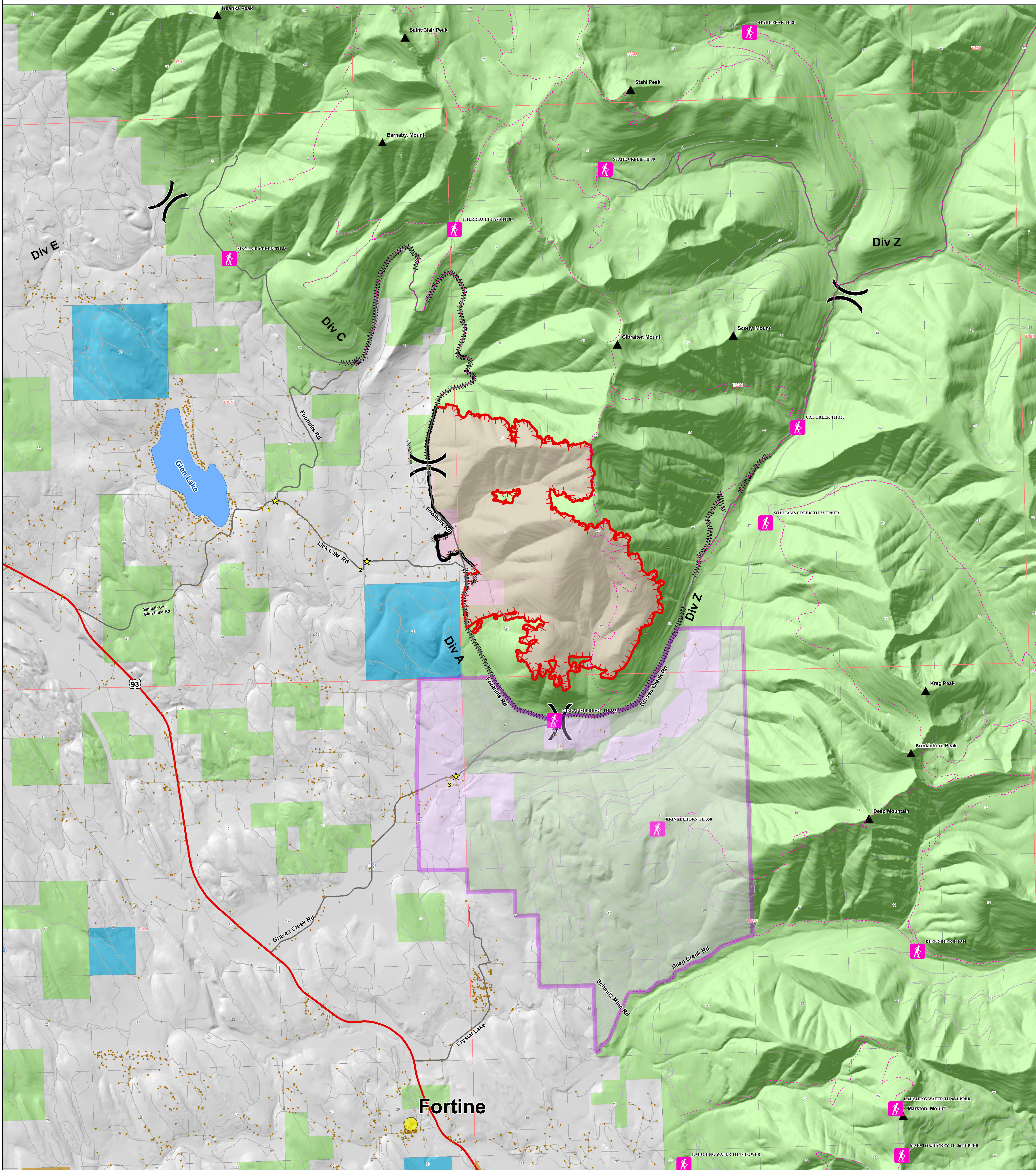




Information

Gibraltar Ridge Fire
MT-KNF-000161



| | | | | | | | | | | | |
|--|--------------|--|-------------|--|-----------|--|----------------------|--|------------------------|--|----------------|
| | FS | | Cities | | Trailhead | | US Hwy or Route | | Uncontrolled Fire Edge | | Staging Area |
| | MT State | | Checkpoints | | Trails | | Primary Travel Route | | Completed Dozer Line | | Completed Line |
| | Plum Creek | | Structure | | Hand Line | | Line Break Completed | | | | |
| | Private | | Mtn. top | | | | | | | | |
| | Temp Closure | | | | | | | | | | |

Containment: 12%
Fire Size: 2652
acres as of
8/16/2017 @ 2219

IR flown @ 2219 on 8/16/2017
 IR Acres: 2548 acres

Miles
 0 0.3250.65 1.3