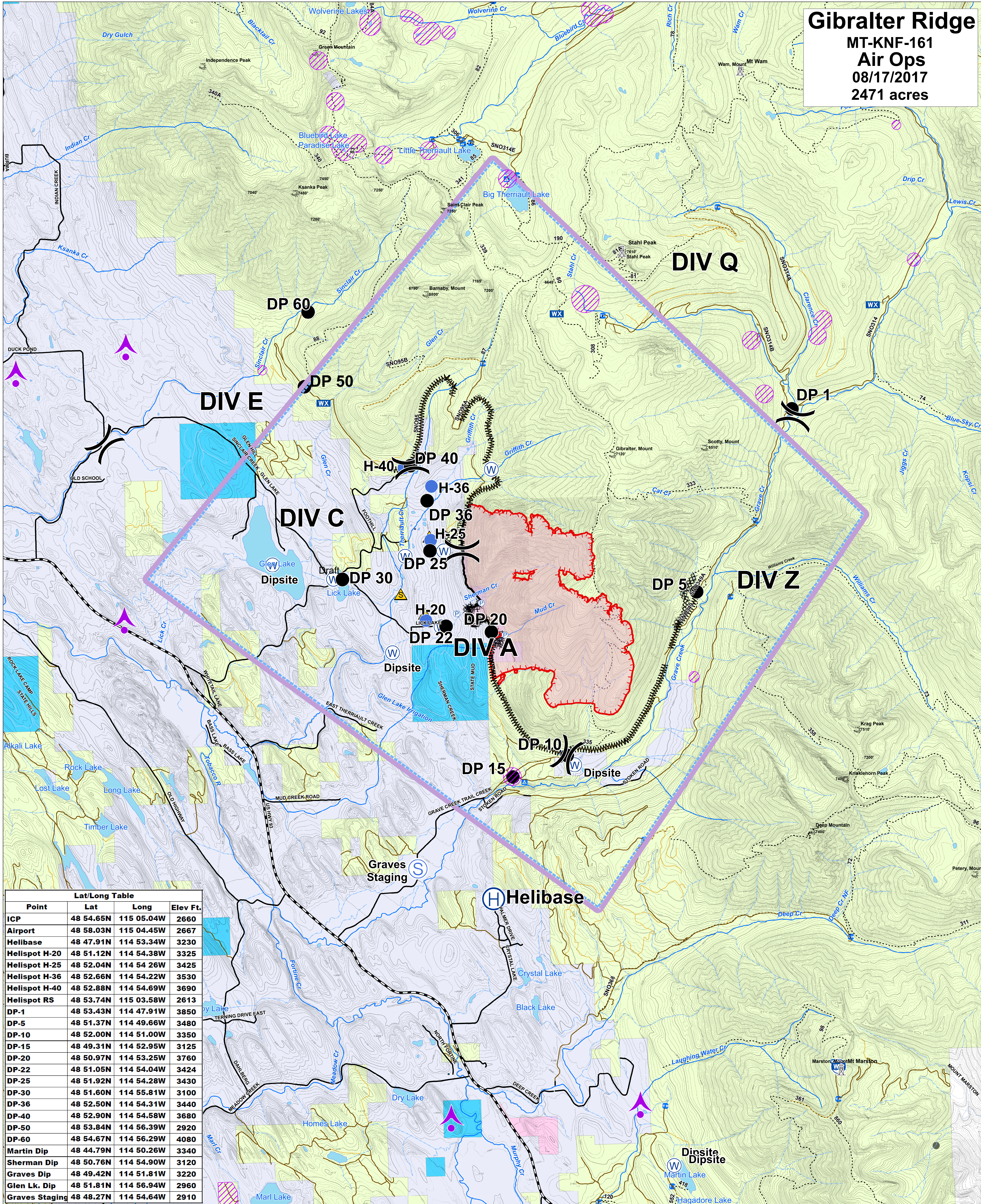


Gibraltar Ridge

MT-KNF-161
Air Ops
08/17/2017
2471 acres



| Point | Lat | Long | Elev Ft. |
|----------------|-----------|------------|----------|
| ICP | 48 54.65N | 115 05.04W | 2660 |
| Airport | 48 58.03N | 115 04.45W | 2667 |
| Helibase | 48 47.91N | 114 53.34W | 3230 |
| Helispot H-20 | 48 51.12N | 114 54.38W | 3325 |
| Helispot H-25 | 48 52.04N | 114 54 26W | 3425 |
| Helispot H-36 | 48 52.66N | 114 54.22W | 3530 |
| Helispot H-40 | 48 52.88N | 114 54.69W | 3690 |
| Helispot RS | 48 53.74N | 115 03.58W | 2613 |
| DP-1 | 48 53.43N | 114 47.91W | 3850 |
| DP-5 | 48 51.37N | 114 49.66W | 3480 |
| DP-10 | 48 52.00N | 114 51.00W | 3350 |
| DP-15 | 48 49.31N | 114 52.95W | 3125 |
| DP-20 | 48 50.97N | 114 53.25W | 3760 |
| DP-22 | 48 51.05N | 114 54.04W | 3424 |
| DP-25 | 48 51.92N | 114 54.28W | 3430 |
| DP-30 | 48 51.60N | 114 55.81W | 3100 |
| DP-36 | 48 52.50N | 114 54.31W | 3440 |
| DP-40 | 48 52.90N | 114 54.58W | 3680 |
| DP-50 | 48 53.84N | 114 56.39W | 2920 |
| DP-60 | 48 54.67N | 114 56.29W | 4080 |
| Martin Dip | 48 44.79N | 114 50.26W | 3340 |
| Sherman Dip | 48 50.76N | 114 54.90W | 3120 |
| Graves Dip | 48 49.42N | 114 51.81W | 3220 |
| Glen Lk. Dip | 48 51.81N | 114 56.94W | 2960 |
| Graves Staging | 48 48.27N | 114 54.64W | 2910 |

Legend

| | | | | | | | | |
|---|---|---|--|--|--|--|--|--|
| Roads County State Highways State Lands Forest Roads Open Gated Trails | Developed Rec Sites Campground Picnic Site Lookout/Cabin Trailheads | Peaks Lookouts Lakes Major Stream Intermittent Stream | OWNER FS MT State Private Plum Creek | Division Drop Point Water Source Helispot Helibase | Uncontrolled Fire Edge Completed Line Completed Dozer Line Line Break Completed Spot Fire Safety Zone | Aerial Retardant Avoidance Comm Towers TFR | | |
|---|---|---|--|--|--|--|--|--|

0 1 2 3 4 5 Miles

source: 20170816 NAD83zone11