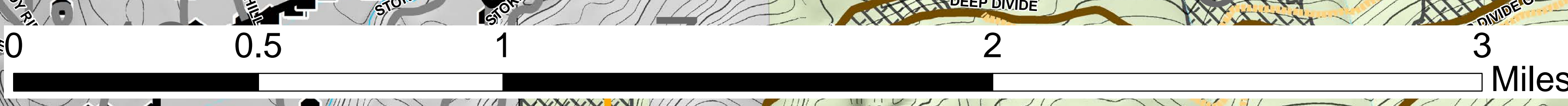
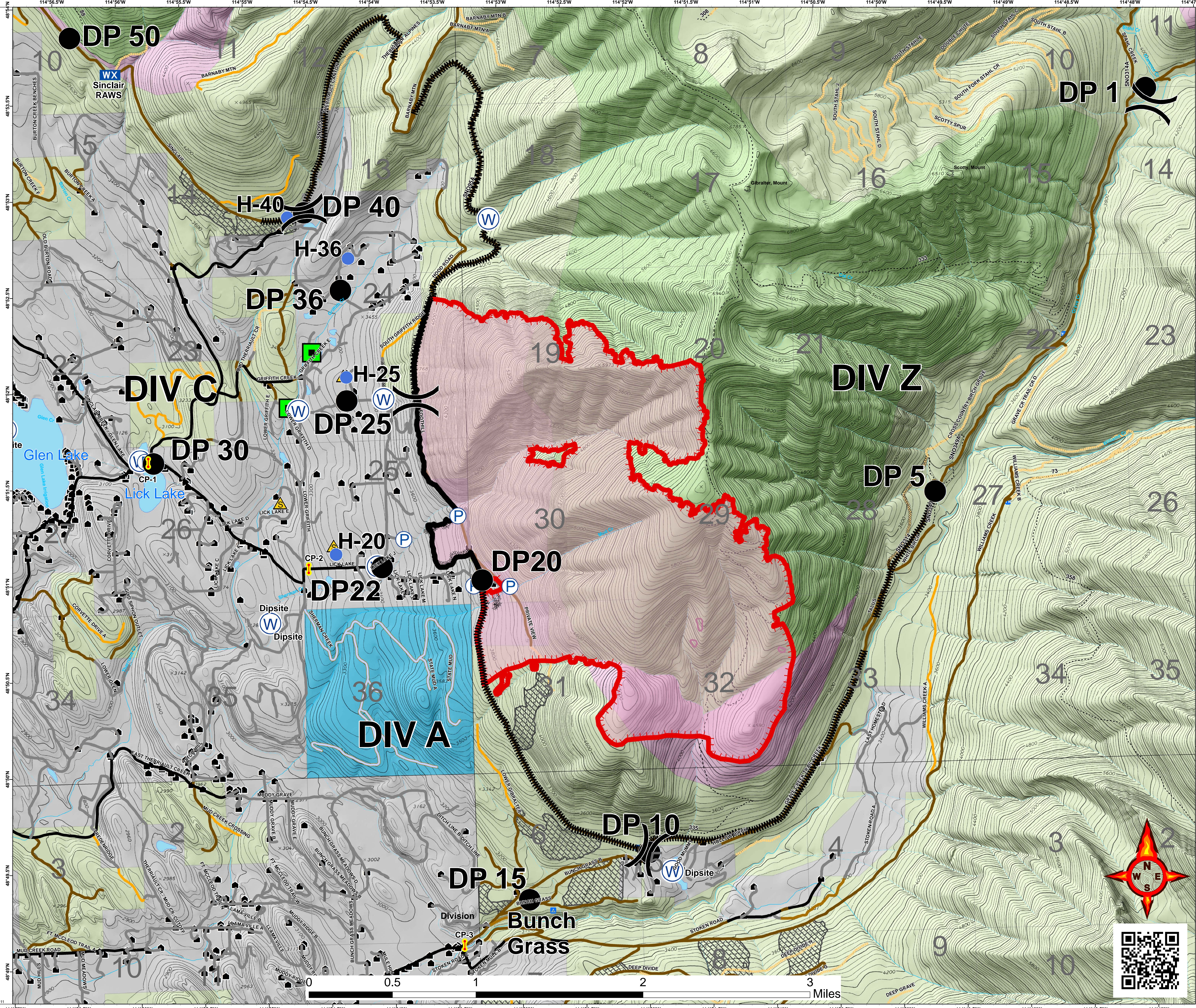




**Gibraltar Ridge
MT-KNF-161
Briefing
08/17/2017
Day Shift
2471 acres**

Legend

- Roads**
- County
 - Local, Private
 - State Highways
 - State Lands
- Forest Roads**
- Open
 - Gated
 - Barriered
 - Impassible
 - Trails
- Structures**
- Peaks
 - Lookouts
- Developed Rec Sites**
- Trailheads
 - Campground
 - Picnic Site
 - Lookout/Cabin
 - Lake
 - Major Stream
 - Intermittent Stream
- Timber Sale**
- Recommended Wilderness
 - Wilderness Study Area
- OWNER**
- FS
 - MT State
 - Private
 - Plum Creek
 - Uncontrolled Fire Edge
 - Completed Line
 - Completed Dozer Line
 - Line Break Completed
 - Spot Fire
 - Water Source
 - Drop Point
 - Helispot
 - Safety Zone
 - Division
 - Staging Area
 - Pump
 - Mobile Weather Unit
 - LEO Checkpoints
 - Wooden Bridge



114°57'W 114°56.5'W 114°56'W 114°55.5'W 114°55'W 114°54.5'W 114°54'W 114°53.5'W 114°53'W 114°52.5'W 114°52'W 114°51.5'W 114°51'W 114°50.5'W 114°50'W 114°49.5'W 114°49'W 114°48.5'W 114°48'W