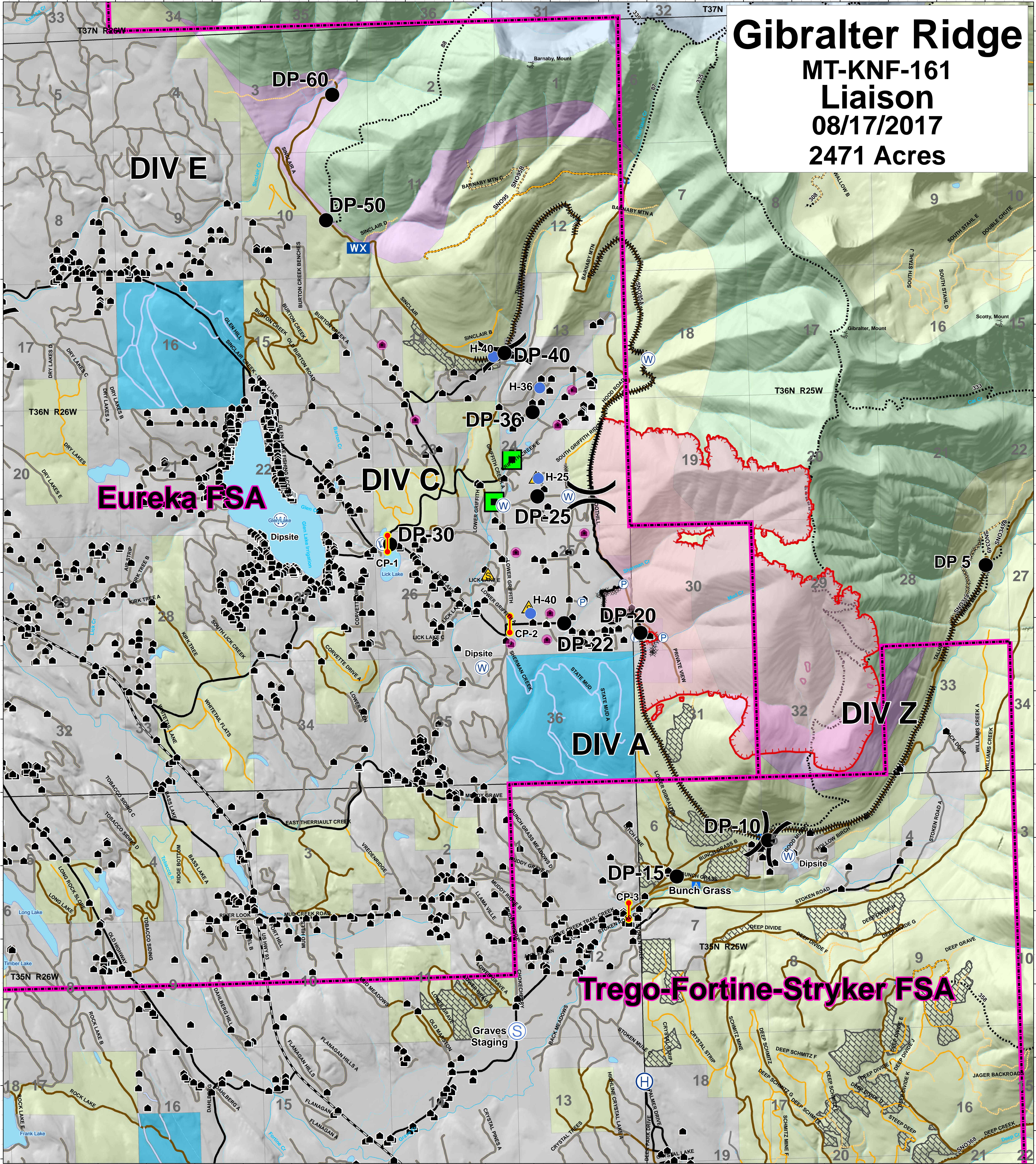


# Gibraltar Ridge

## MT-KNF-161

### Liaison

08/17/2017  
2471 Acres



### Legend

- |                |                     |                        |                        |
|----------------|---------------------|------------------------|------------------------|
| Roads          | Structures          | Timber Sale            | Uncontrolled Fire Edge |
| County         | Peaks               | Ten Lakes Scenic Area  | Completed Line         |
| Local, Private | Lookouts            | Recommended Wilderness | Completed Dozer Line   |
| State Highways | Developed Rec Sites | Wilderness Study Area  | Line Break Completed   |
| State Lands    | Trailheads          | <b>OWNER</b>           | Division               |
| Forest Roads   | Campground          | FS                     | Drop Point             |
| Open           | Picnic Site         | MT State               | Helibase               |
| Gated          | Lookout/Cabin       | Private                | Staging Area           |
| Barriered      | Lake                | Plum Creek             | Safety Zone            |
| Impassable     | Major Stream        |                        | Spot Fire              |
| Trails         | Intermittent Stream |                        | Water Source           |

- |                      |
|----------------------|
| LEO Checkpoints      |
| Evacuated Occupied   |
| Wooden Bridge        |
| Fire District Bndrys |

