

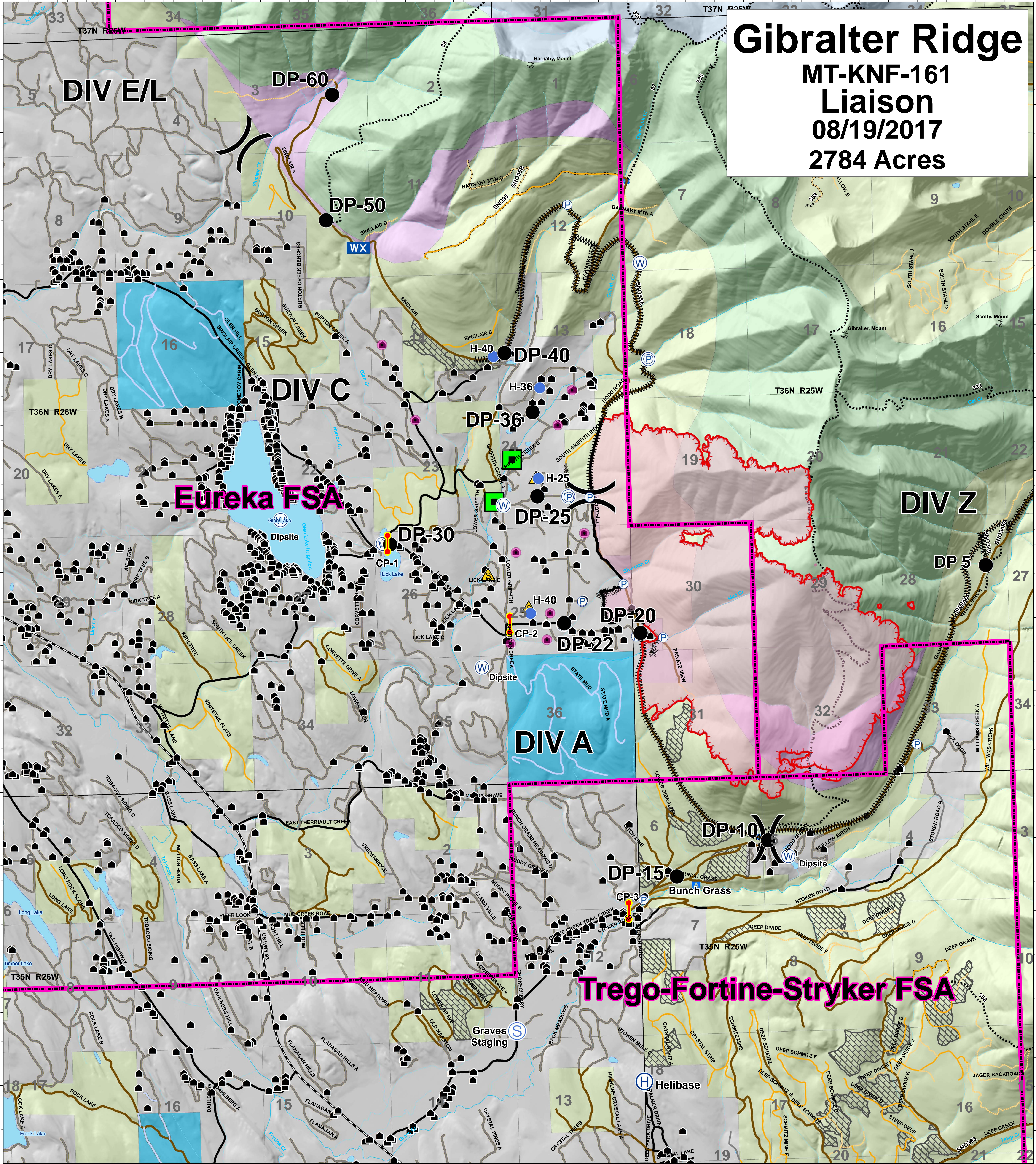
# Gibraltar Ridge

## MT-KNF-161

### Liaison

#### 08/19/2017

#### 2784 Acres



### Legend

- |  |   |   |  |   |
|--|---|---|--|---|
| <ul style="list-style-type: none"> <li>Roads</li> <li>County</li> <li>Local, Private</li> <li>State Highways</li> <li>State Lands</li> <li>Forest Roads</li> <li>Open</li> <li>Gated</li> <li>Barriered</li> <li>Impassable</li> <li>Trails</li> </ul> | <ul style="list-style-type: none"> <li>Structures</li> <li>Peaks</li> <li>Lookouts</li> <li>Developed Rec Sites</li> <li>Trailheads</li> <li>Campground</li> <li>Picnic Site</li> <li>Lookout/Cabin</li> <li>Lake</li> <li>Major Stream</li> <li>Intermittent Stream</li> </ul> | <ul style="list-style-type: none"> <li>Timber Sale</li> <li>Ten Lakes Scenic Area</li> <li>Recommended Wilderness</li> <li>Wilderness Study Area</li> </ul> <p><b>OWNER</b></p> <ul style="list-style-type: none"> <li>FS</li> <li>MT State</li> <li>Private</li> <li>Plum Creek</li> </ul> | <ul style="list-style-type: none"> <li>Uncontrolled Fire Edge</li> <li>Completed Line</li> <li>Completed Dozer Line</li> <li>Line Break Completed</li> <li>Division</li> <li>Drop Point</li> <li>Helibase</li> <li>Helispot</li> <li>Staging Area</li> <li>Safety Zone</li> <li>Spot Fire</li> <li>Water Source</li> </ul> | <ul style="list-style-type: none"> <li>LEO Checkpoints</li> <li>Evacuated Occupied</li> <li>Wooden Bridge</li> <li>Fire District Bndrys</li> <li>Lookout</li> </ul> |
|--|---|---|--|---|

