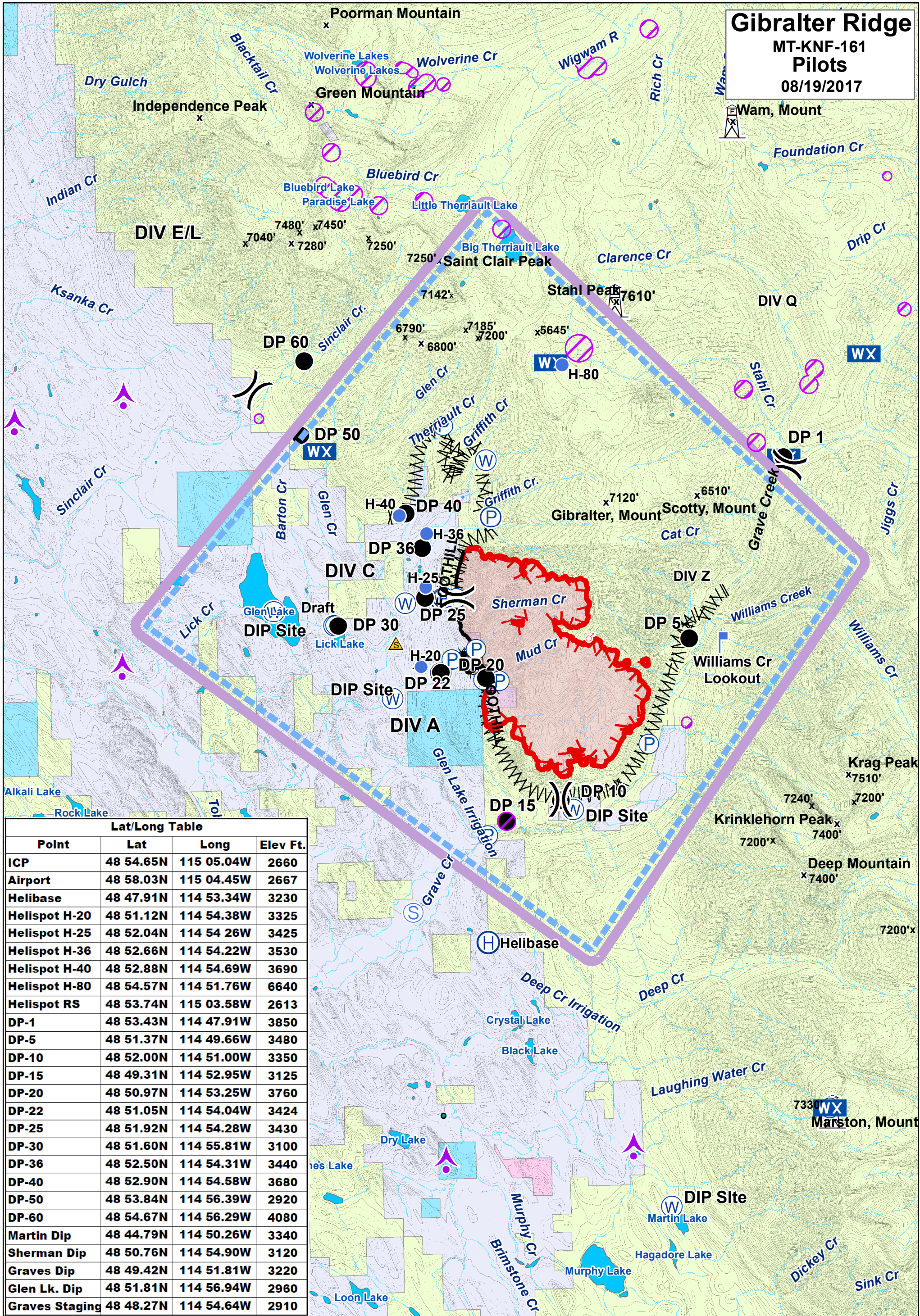


Gibraltar Ridge

MT-KNF-161
Pilots
08/19/2017



Lat/Long Table

Point	Lat	Long	Elev Ft.
ICP	48 54.65N	115 05.04W	2660
Airport	48 58.03N	115 04.45W	2667
Helibase	48 47.91N	114 53.34W	3230
Helispot H-20	48 51.12N	114 54.38W	3325
Helispot H-25	48 52.04N	114 54.26W	3425
Helispot H-36	48 52.66N	114 54.22W	3530
Helispot H-40	48 52.88N	114 54.69W	3690
Helispot H-80	48 54.57N	114 51.76W	6640
Helispot RS	48 53.74N	115 03.58W	2613
DP-1	48 53.43N	114 47.91W	3850
DP-5	48 51.37N	114 49.66W	3480
DP-10	48 52.00N	114 51.00W	3350
DP-15	48 49.31N	114 52.95W	3125
DP-20	48 50.97N	114 53.25W	3760
DP-22	48 51.05N	114 54.04W	3424
DP-25	48 51.92N	114 54.28W	3430
DP-30	48 51.60N	114 55.81W	3100
DP-36	48 52.50N	114 54.31W	3440
DP-40	48 52.90N	114 54.58W	3680
DP-50	48 53.84N	114 56.39W	2920
DP-60	48 54.67N	114 56.29W	4080
Martin Dip	48 44.79N	114 50.26W	3340
Sherman Dip	48 50.76N	114 54.90W	3120
Graves Dip	48 49.42N	114 51.81W	3220
Glen Lk. Dip	48 51.81N	114 56.94W	2960
Graves Staging	48 48.27N	114 54.64W	2910

- | | | | | |
|----------------|------------------------|------------------------|---------------------|----------------------------|
| Roads | Peaks | FS | Spot Fire | Aerial Retardant Avoidance |
| State Highways | Lookout Towers | MT State | Drop Point | Comm Towers |
| State Lands | Lakes | Private | Division | TFR |
| Forest Roads | Major Stream | Plum Creek | Water Source | Lookout |
| Open | Intermittent Stream | Uncontrolled Fire Edge | Helispot | |
| Gated | Recommended Wilderness | Completed Line | Helibase | |
| Trails | Wilderness Study Area | Completed Dozer Line | Mobile Weather Unit | |
| | | Line Break Completed | | |

