



**Gibraltar Ridge**  
 MT-KNF-161  
 IAP  
 Day Shift  
 08/20/2017

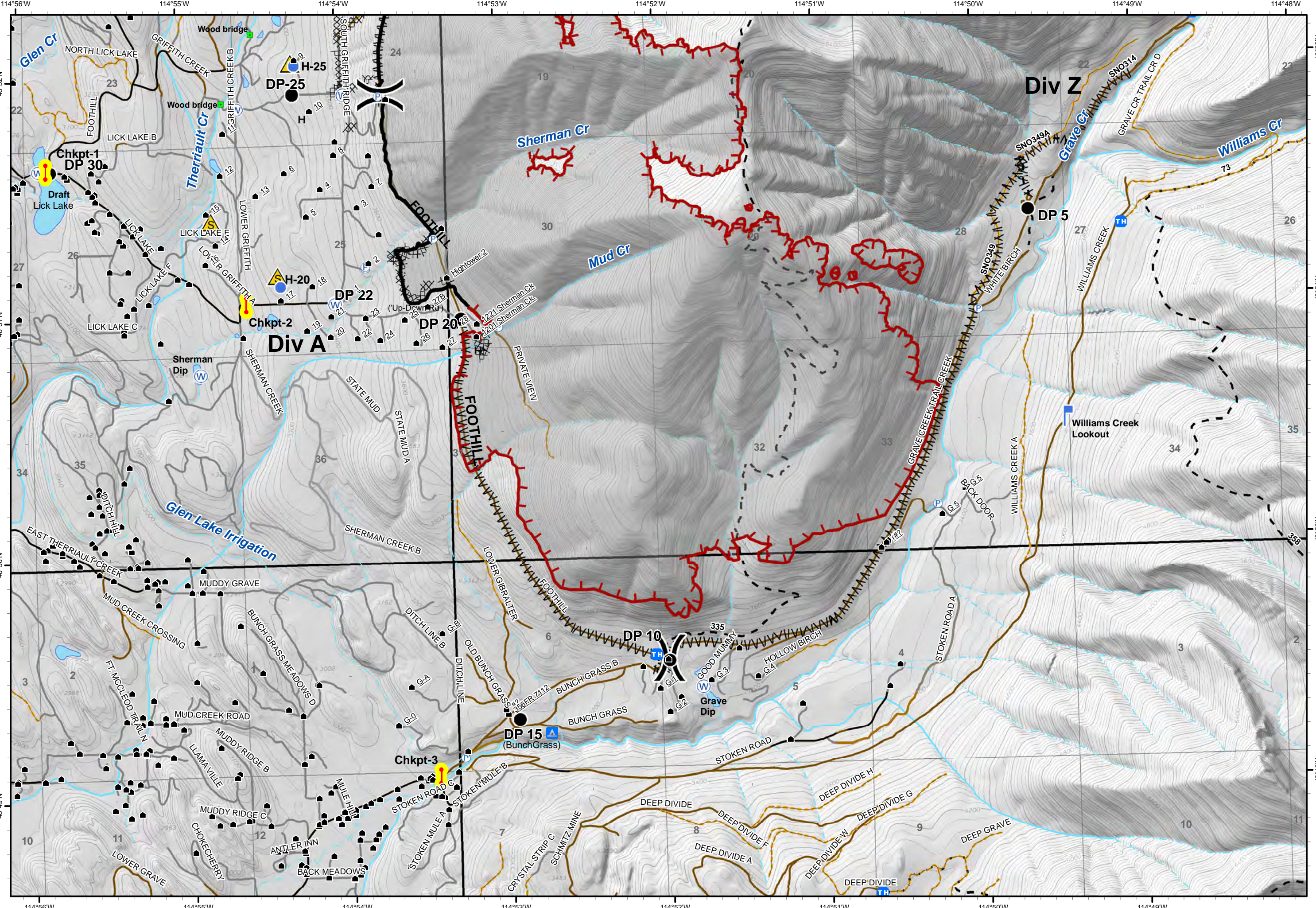
Page 2 of 2

- LEO Checkpoint
- Developed Rec Sites
  - Campground
  - Picnic Site
  - Lookout/Cabin
  - Trailheads
- Structures
- Water Source
- Drop Point
- Helispot
- Lookout
- Pump
- Safety Zone
- Other
- Uncontrolled Fire Edge
- Completed Dozer Line
- Completed Line
- Hand Line
- Line Break Completed
- Roads
  - County
  - Local, Private
  - State Highways
  - State Lands
- Forest Roads
  - Open
  - Gated
  - Barrier/Impassible
- Trails
- Peaks
- Lookouts
- Lake
- Major Stream
- Intermittent Stream

0 0.1 0.2 Miles



Date: 8/19/2017  
 Time: 9:48:52 PM  
 User Name: siadams



114°56'W 114°55'W 114°54'W 114°53'W 114°52'W 114°51'W 114°50'W 114°49'W 114°48'W

48°52'N 48°51'N 48°50'N 48°49'N

114°56'W 114°55'W 114°54'W 114°53'W 114°52'W 114°51'W 114°50'W 114°49'W