



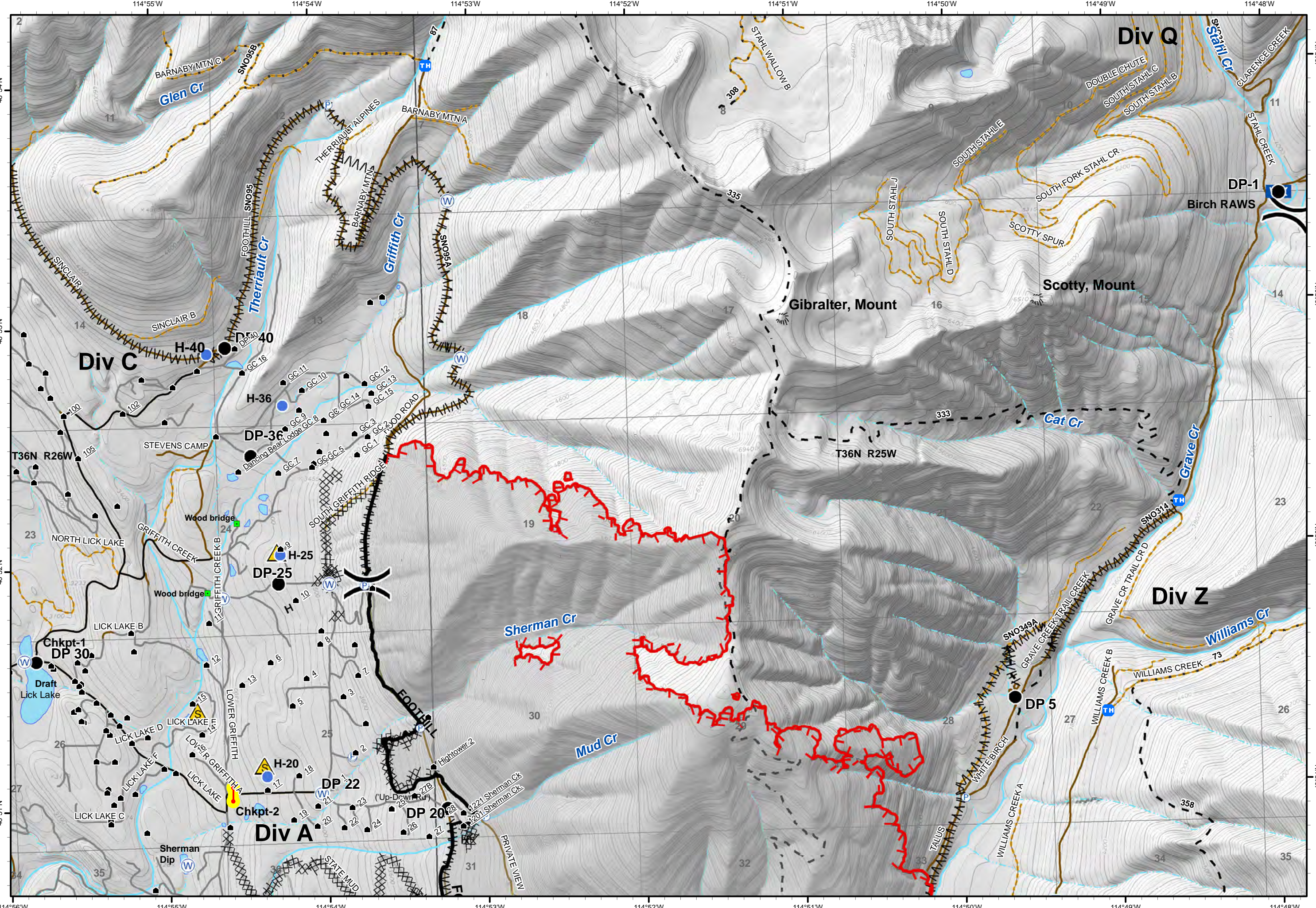
Gibraltar Ridge
 MT-KNF-161
 IAP
 Night Shift
 08/21/2017

Page 1 of 2

- LEO Checkpoint
- Developed Rec Sites
 - Campground
 - Picnic Site
 - Lookout/Cabin
 - Trailheads
- Structures
- Water Source
- Drop Point
- Helispot
- Lookout
- Mobile Weather Unit
- Pump
- Safety Zone
- Other
- Uncontrolled Fire Edge
- Completed Dozer Line
- Completed Line
- Hand Line
- Line Break Completed
- Roads
 - County
 - Local, Private
 - State Highways
 - State Lands
- Forest Roads
 - Open
 - Gated
 - Barrierred/Impassible
- Trails
- Peaks
- Lookouts
- Lake
- Major Stream
- Intermittent Stream

0 0.1 0.2 Miles

Date: 8/21/2017
 Time: 4:02:41 PM
 User Name: sladams





Gibraltar Ridge
 MT-KNF-161
 IAP
 Night Shift
 08/21/2017
 Page 2 of 2

- LEO Checkpoint
- Developed Rec Sites
 - Campground
 - Picnic Site
 - Lookout/Cabin
 - Trailheads
- Structures
- Water Source
- Drop Point
- Helispot
- Lookout
- Pump
- Safety Zone
- Other
- Uncontrolled Fire Edge
- Completed Dozer Line
- Completed Line
- Hand Line
- Line Break Completed

- Roads
 - County
 - Local, Private
 - State Highways
 - State Lands
- Forest Roads
 - Open
 - Gated
 - Barriered/Impassible
- Trails
- Peaks
- Lookouts
- Lake
- Major Stream
- Intermittent Stream

0 0.1 0.2
 Miles



Date: 8/21/2017
 Time: 4:02:58 PM
 User Name: siadams

