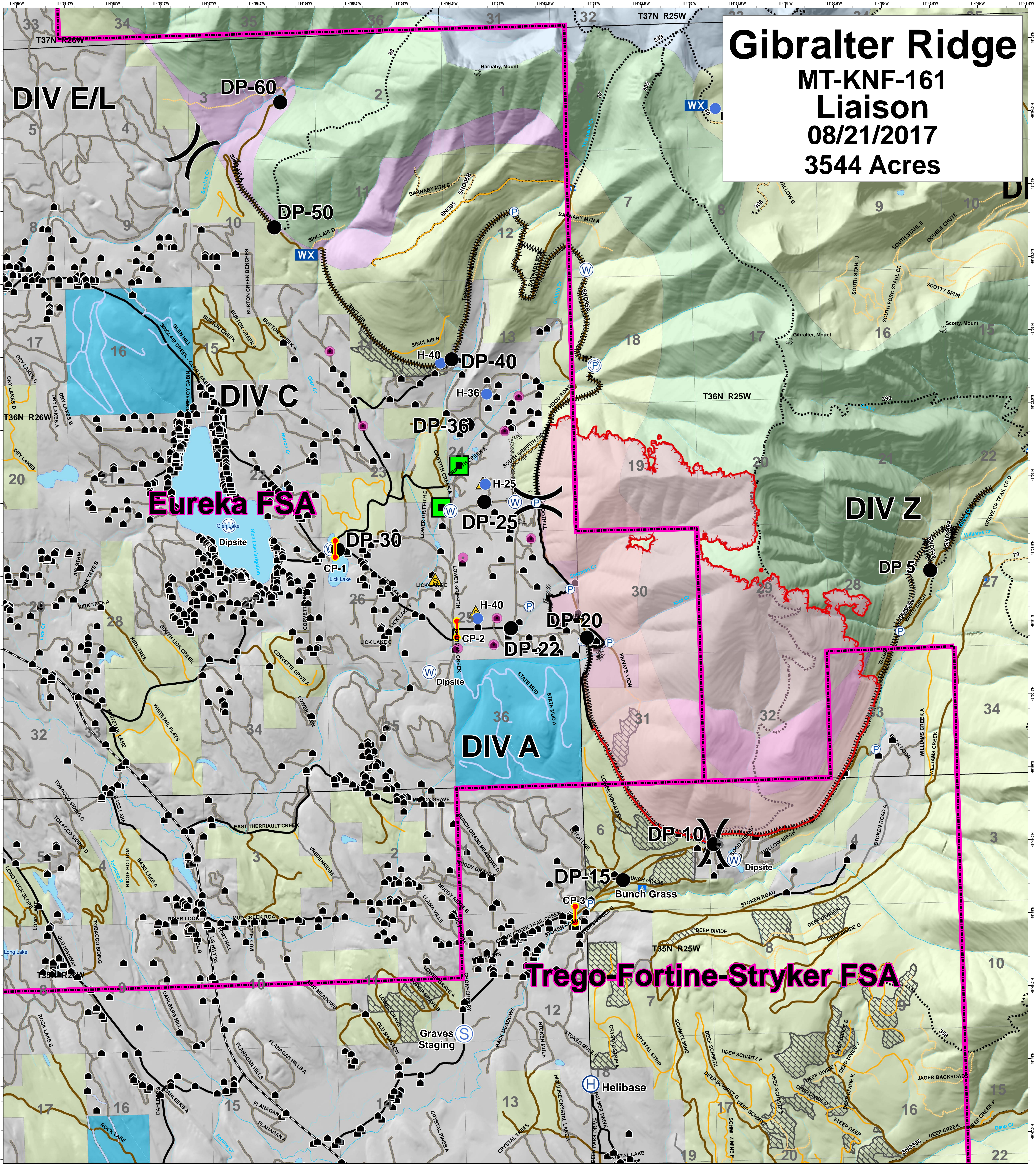


Gibraltar Ridge

MT-KNF-161

Liaison

08/21/2017
3544 Acres



Legend

- | | | | | |
|----------------|---------------------|------------------------|------------------------|----------------------|
| Roads | Structures | Timber Sale | Uncontrolled Fire Edge | LEO Checkpoints |
| County | Peaks | Ten Lakes Scenic Area | Completed Line | Evacuated Occupied |
| Local, Private | Lookouts | Recommended Wilderness | Completed Dozer Line | Wooden Bridge |
| State Highways | Developed Rec Sites | Wilderness Study Area | Line Break Completed | Fire District Bndrys |
| State Lands | Trailheads | OWNER | Division | Lookout |
| Forest Roads | Campground | FS | Drop Point | |
| Open | Picnic Site | MT State | Helibase | |
| Gated | Lookout/Cabin | Private | Helispot | |
| Barriered | Lake | Plum Creek | Staging Area | |
| Impassable | Major Stream | | Safety Zone | |
| Trails | Intermittent Stream | | Spot Fire | |
| | | | Water Source | |

