



Gibraltar Ridge
 MT-KNF-161
 IAP
 Day Shift
 08/22/2017

Page 2 of 2

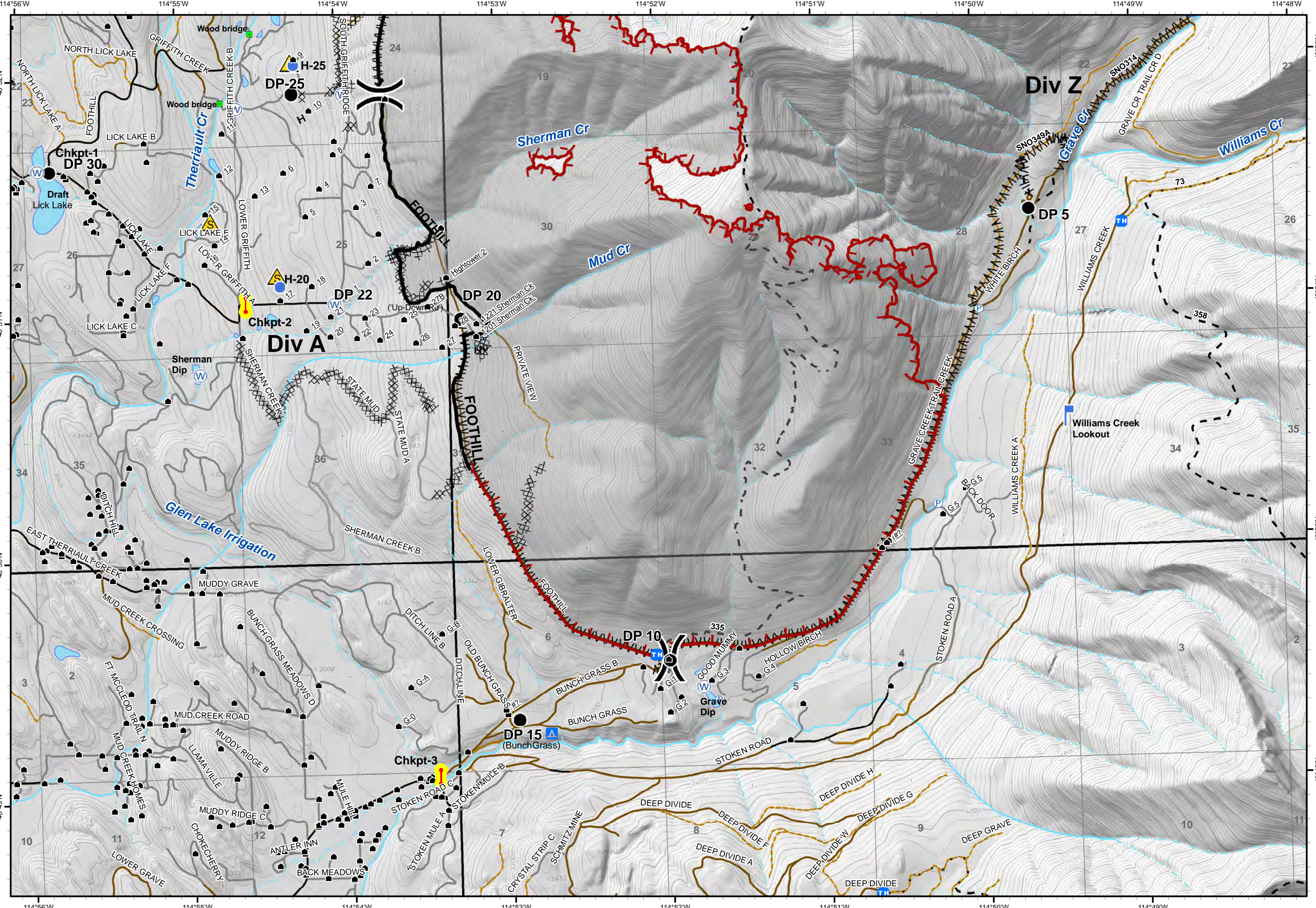
- LEO Checkpoint
- Developed Rec Sites
 - Campground
 - Picnic Site
 - Lookout/Cabin
 - Trailheads
- Structures
- Water Source
- Drop Point
- Helispot
- Lookout
- Pump
- Safety Zone
- Other
- Uncontrolled Fire Edge

- Completed Dozer Line
- Completed Line
- Hand Line
- Line Break Completed
- Roads
 - County
 - Local, Private
 - State Highways
 - State Lands
- Forest Roads
 - Open
 - Gated
 - Barriered/Impassible
- Trails
- Peaks
- Lookouts
- Lake
- Major Stream
- Intermittent Stream

0 0.1 0.2 Miles



Date: 8/21/2017
 Time: 9:05:56 PM
 User Name: sladams



Div Z

Div A

114°56'W 114°55'W 114°54'W 114°53'W 114°52'W 114°51'W 114°50'W 114°49'W

48°52'N 48°51'N 48°50'N 48°49'N