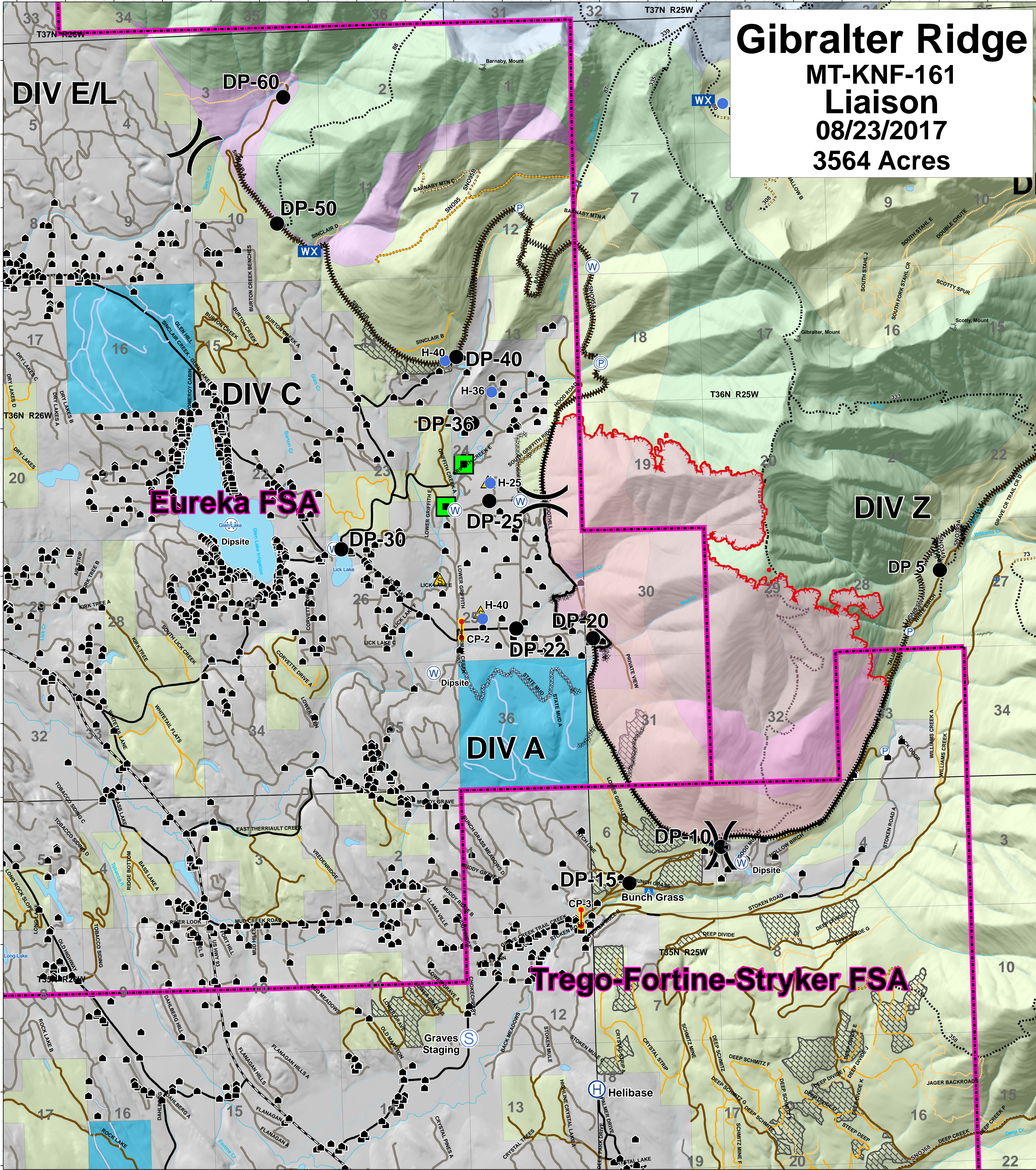


Gibraltar Ridge

MT-KNF-161

Liaison

08/23/2017
3564 Acres



Legend

- | | | | | |
|--|---|---|--|---|
| <ul style="list-style-type: none"> Roads County Local, Private State Highways State Lands Forest Roads Open Gated Barriered Impassable Trails | <ul style="list-style-type: none"> Structures Peaks Lookouts Developed Rec Sites Trailheads Campground Picnic Site Lookout/Cabin Lake Major Stream Intermittent Stream | <ul style="list-style-type: none"> Timber Sale Ten Lakes Scenic Area Recommended Wilderness Wilderness Study Area <p>OWNER</p> <ul style="list-style-type: none"> FS MT State Private Plum Creek | <ul style="list-style-type: none"> Uncontrolled Fire Edge Completed Line Completed Dozer Line Line Break Completed Division Drop Point Helibase Helispot Staging Area Safety Zone Spot Fire Water Source | <ul style="list-style-type: none"> LEO Checkpoints Evacuated Occupied Wooden Bridge Fire District Bndrys Lookout |
|--|---|---|--|---|

