

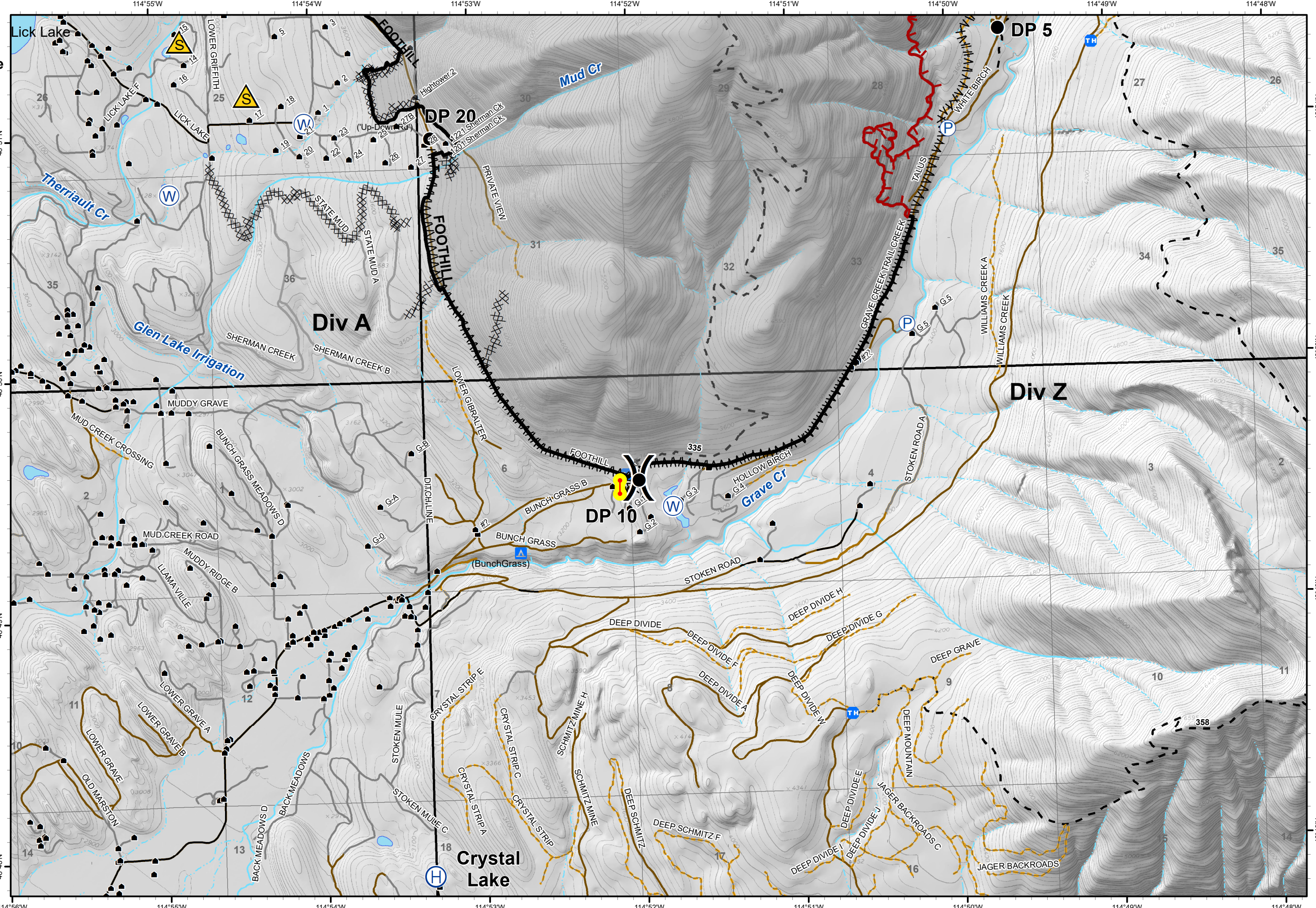
# IAP

Gibraltar Ridge  
MT-KNF-161  
08/30/2017  
Page 2 of 2

- Checkpoint
- Developed Rec Sites
- Campground
- Water Source
- Drop Point
- Helibase
- Pump
- Safety Zone

- Uncontrolled Fire Edge
- Completed Dozer Line
- Completed Line
- Hand Line
- Line Break Completed
- Structures
- Trailheads
- Roads**
- County
- Local, Private
- State Lands
- Forest Roads**
- Open
- Gated
- Barriered/Impossible
- Trails
- Major Stream
- Intermittent Stream

0 1,000 2,000 Feet



114°56'W 114°55'W 114°54'W 114°53'W 114°52'W 114°51'W 114°50'W 114°49'W 114°48'W

114°55'W 114°54'W 114°53'W 114°52'W 114°51'W 114°50'W 114°49'W 114°48'W

48°50'N 48°49'N 48°48'N

48°51'N 48°50'N 48°49'N 48°48'N