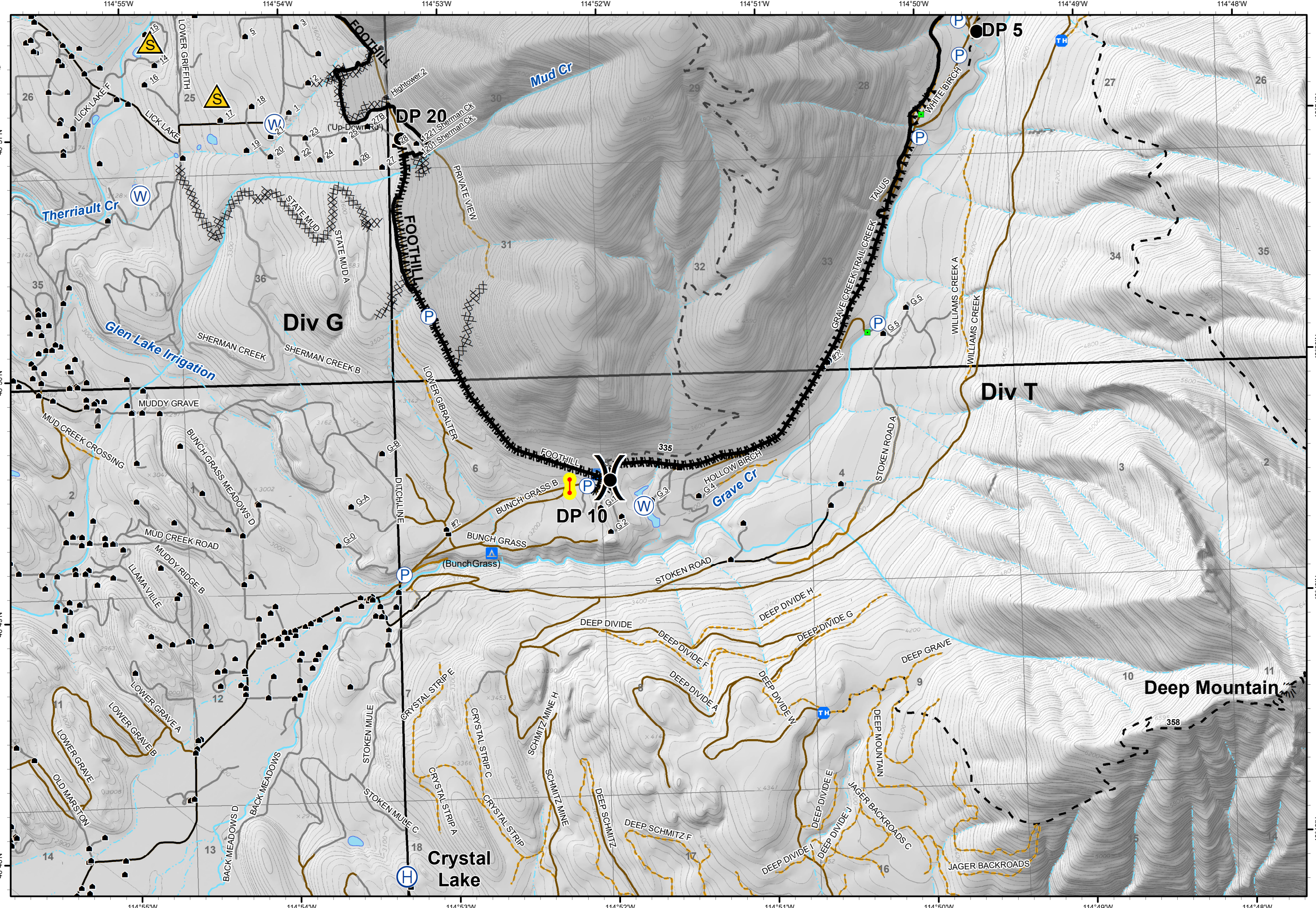


# IAP

Gibraltar Ridge  
MT-KNF-161  
09/01/2017  
Page 2 of 2  
6,568 acres

- Checkpoint
- Developed Rec Sites
  - Campground
  - Water Source
  - Drop Point
  - Helibase
  - Pump
  - Safety Zone
  - Other
- Completed Dozer Line
- Completed Line
- Hand Line
- Line Break Completed
- Structures
- Trailheads
- Roads
  - County
  - Local, Private
  - State Lands
- Forest Roads
  - Open
  - Gated
  - Barriered/Impossible
- Trails
- Peaks
- Major Stream
- Intermittent Stream

0 1,000 2,000 Feet



114°55'W 114°54'W 114°53'W 114°52'W 114°51'W 114°50'W 114°49'W 114°48'W

48°51'N 48°50'N 48°49'N 48°48'N