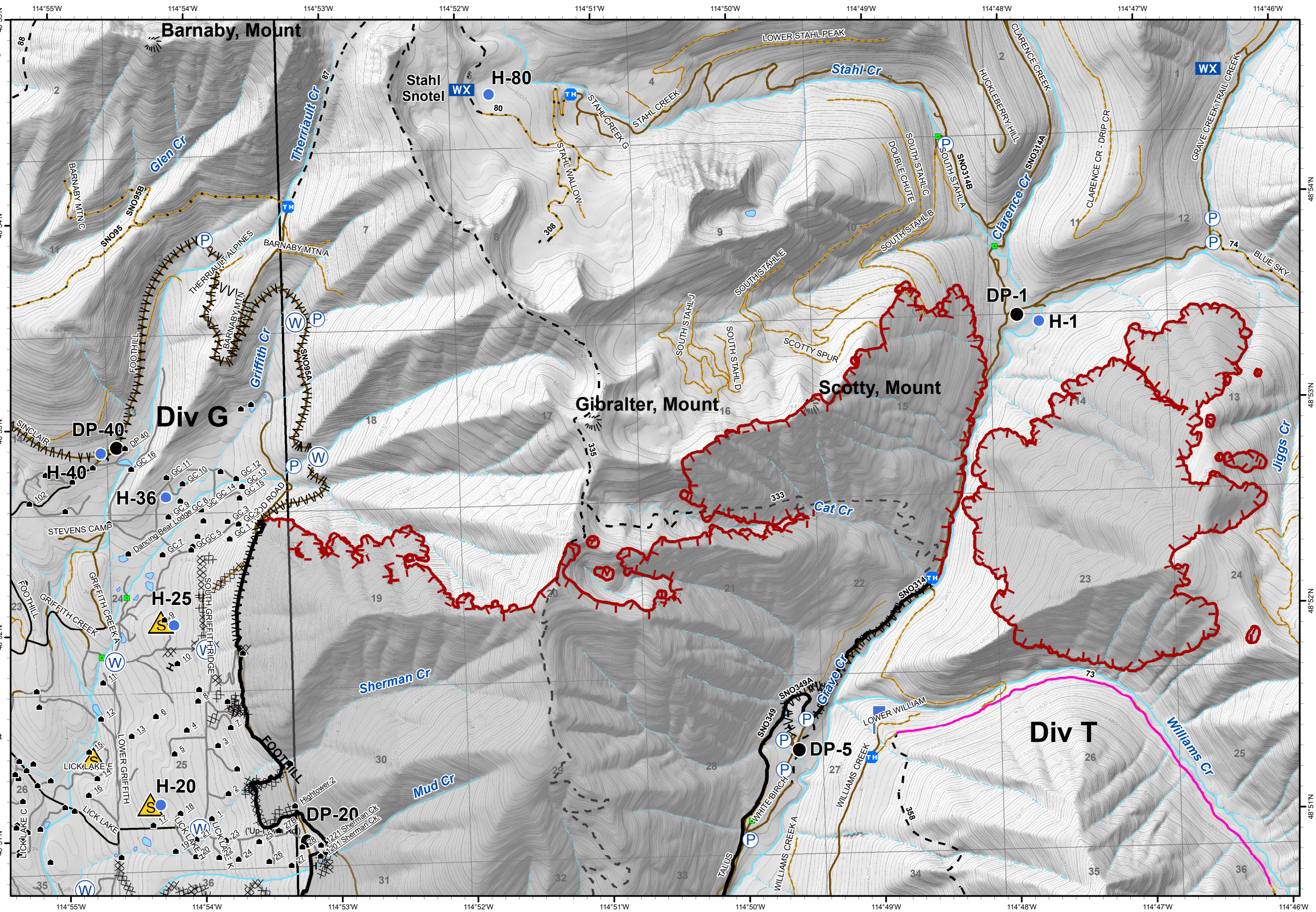


IAP

Gibraltar Ridge
MT-KNF-161
09/08/2017
Page 1 of 2
7,291 acres

- Trailheads
- Structures
- Water Source
- Drop Point
- Helispot
- Lookout
- Mobile Weather Unit
- Pump
- Safety Zone
- Other
- Uncontrolled Fire Edge
- Completed Dozer Line
- Completed Line
- Hand Line
- Line Break Completed
- Unknown
- Roads**
 - County
 - Local, Private
 - State Lands
 - Forest Roads**
 - Open
 - Gated
 - Barriered/Impassible
 - Trails
 - Peaks
 - Major Stream
 - Intermittent Stream

0 1,000 2,000 Feet



114°55'W 114°54'W 114°53'W 114°52'W 114°51'W 114°50'W 114°49'W 114°48'W 114°47'W 114°46'W