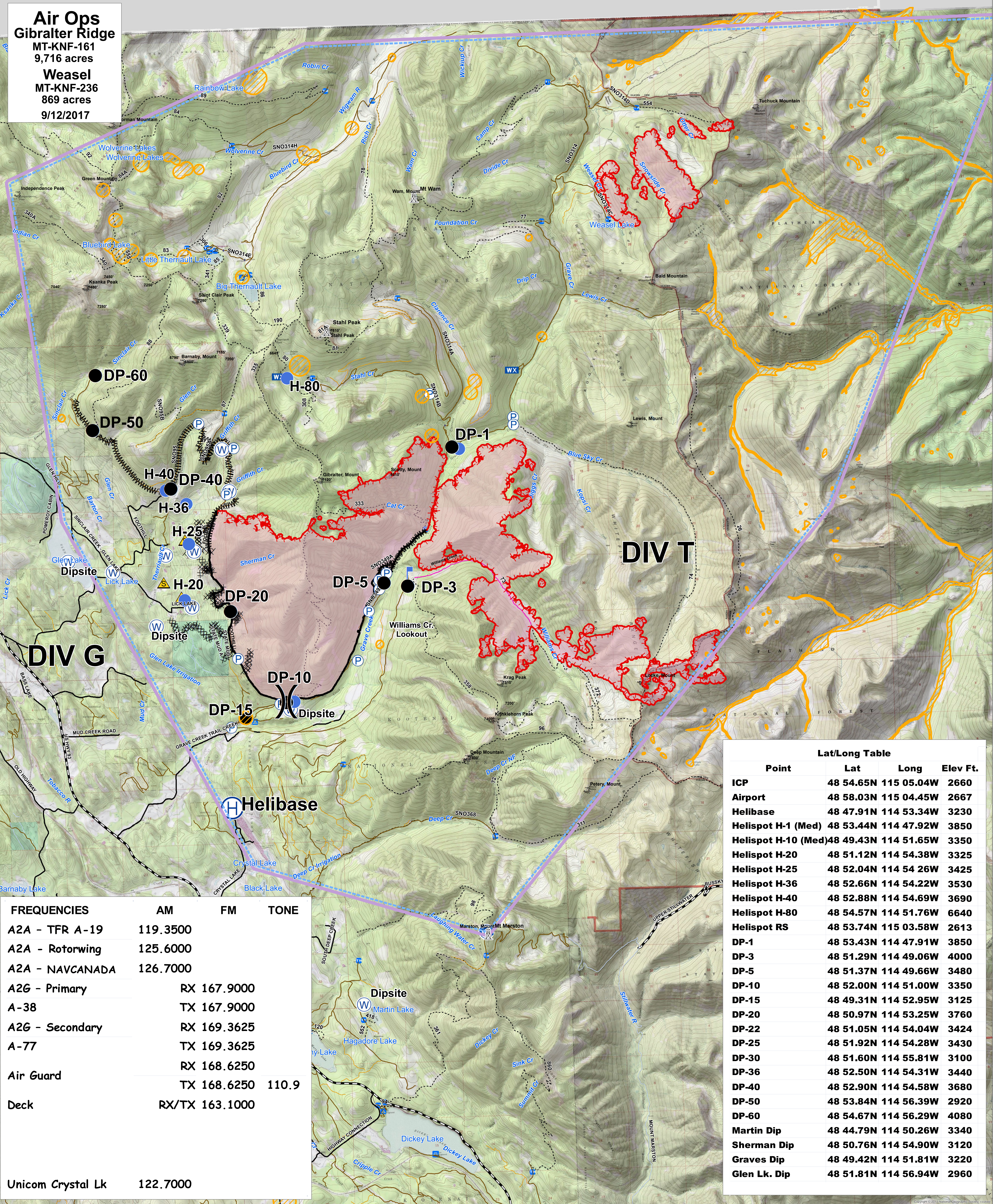


**Air Ops**  
**Gibraltar Ridge**  
 MT-KNF-161  
 9,716 acres  
**Weasel**  
 MT-KNF-236  
 869 acres  
 9/12/2017



FREQUENCIES	AM	FM	ZONE
A2A - TFR A-19	119.3500		
A2A - Rotorwing	125.6000		
A2A - NAVCANADA	126.7000		
A2G - Primary		RX 167.9000	
A-38		TX 167.9000	
A2G - Secondary		RX 169.3625	
A-77		TX 169.3625	
Air Guard		RX 168.6250	110.9
Deck		TX/TX 163.1000	
Unicom Crystal Lk	122.7000		

Lat/Long Table			
Point	Lat	Long	Elev Ft.
ICP	48 54.65N	115 05.04W	2660
Airport	48 58.03N	115 04.45W	2667
Helibase	48 47.91N	114 53.34W	3230
Helispot H-1 (Med)	48 53.44N	114 47.92W	3850
Helispot H-10 (Med)	48 49.43N	114 51.65W	3350
Helispot H-20	48 51.12N	114 54.38W	3325
Helispot H-25	48 52.04N	114 54.26W	3425
Helispot H-36	48 52.66N	114 54.22W	3530
Helispot H-40	48 52.88N	114 54.69W	3690
Helispot H-80	48 54.57N	114 51.76W	6640
Helispot RS	48 53.74N	115 03.58W	2613
DP-1	48 53.43N	114 47.91W	3850
DP-3	48 51.29N	114 49.06W	4000
DP-5	48 51.37N	114 49.66W	3480
DP-10	48 52.00N	114 51.00W	3350
DP-15	48 49.31N	114 52.95W	3125
DP-20	48 50.97N	114 53.25W	3760
DP-22	48 51.05N	114 54.04W	3424
DP-25	48 51.92N	114 54.28W	3430
DP-30	48 51.60N	114 55.81W	3100
DP-36	48 52.50N	114 54.31W	3440
DP-40	48 52.90N	114 54.58W	3680
DP-50	48 53.84N	114 56.39W	2920
DP-60	48 54.67N	114 56.29W	4080
Martin Dip	48 44.79N	114 50.26W	3340
Sherman Dip	48 50.76N	114 54.90W	3120
Graves Dip	48 49.42N	114 51.81W	3220
Glen Lk. Dip	48 51.81N	114 56.94W	2960

**Legend**

County, State Highways, State Lands, Forest Roads, Open, Gated, Trails	Campground, Picnic Site, Lookout/Cabin, Trailheads	Peaks, Lookout Tower, Lakes, Major Stream, Intermittent Stream	FS, MT State, Private, Plum Creek	Division, Drop Point, Water Source, Helispot, Helibase	Uncontrolled Fire Edge, Completed Line, Completed Dozer Line, Line Break Completed, Safety Zone	Aerial Retardant Avoidance, Comm Towers, TFR, Lookout
--	--	--	-----------------------------------	--	---	---

0 1.5 3 4.5 6 7.5 Miles