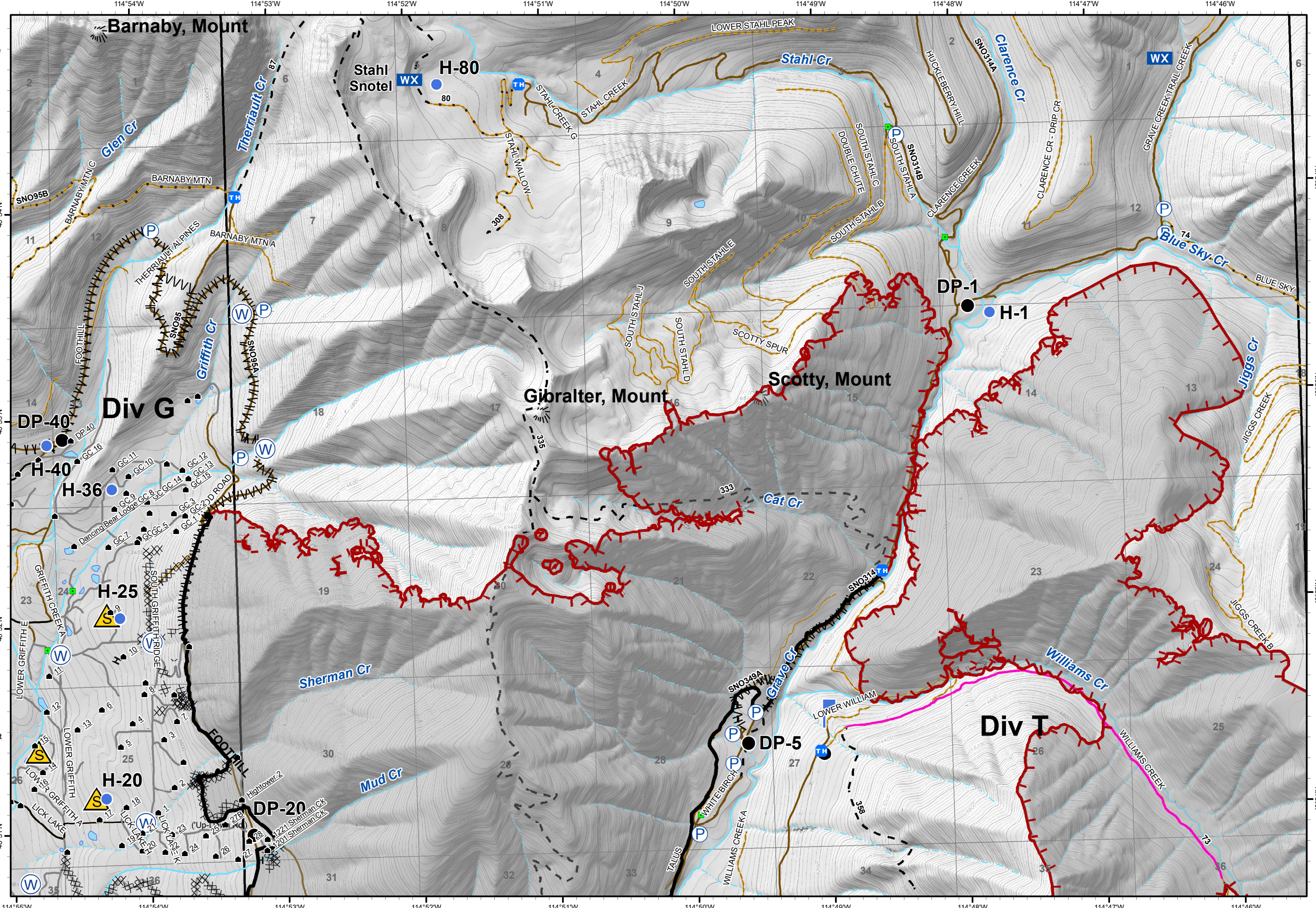


IAP

Gibraltar Ridge
MT-KNF-161
09/14/2017
Page 1 of 4
12,700 acres

- Trailheads
- Structures
- Water Source
- Drop Point
- Helispot
- Lookout
- Mobile Weather Unit
- Pump
- Safety Zone
- Other
- Uncontrolled Fire Edge
- Completed Dozer Line
- Completed Line
- Hand Line
- Line Break Completed
- Unknown
- Roads**
 - County
 - Local, Private
 - State Lands
- Forest Roads**
 - Open
 - Gated
 - Barriered/Impassible
- Trails
- Peaks
- Major Stream
- Intermittent Stream

0 1,000 2,000 Feet



IAP

Gibraltar Ridge
MT-KNF-161
09/14/2017
Page 2 of 4
12,700 acres

- Drop Point
- Helispot
- ▭ Lookout
- Ⓟ Pump
- Other
- Uncontrolled Fire Edge
- Completed Line
- Line Break Completed
- Unknown
- ▭ Structures
- Ⓜ Trailheads
- Roads
 - Local, Private
- Forest Roads
 - Open
 - Gated
 - Barrired/Impassible
- Trails
- ☀ Peaks
- Major Stream
- Intermittent Stream

