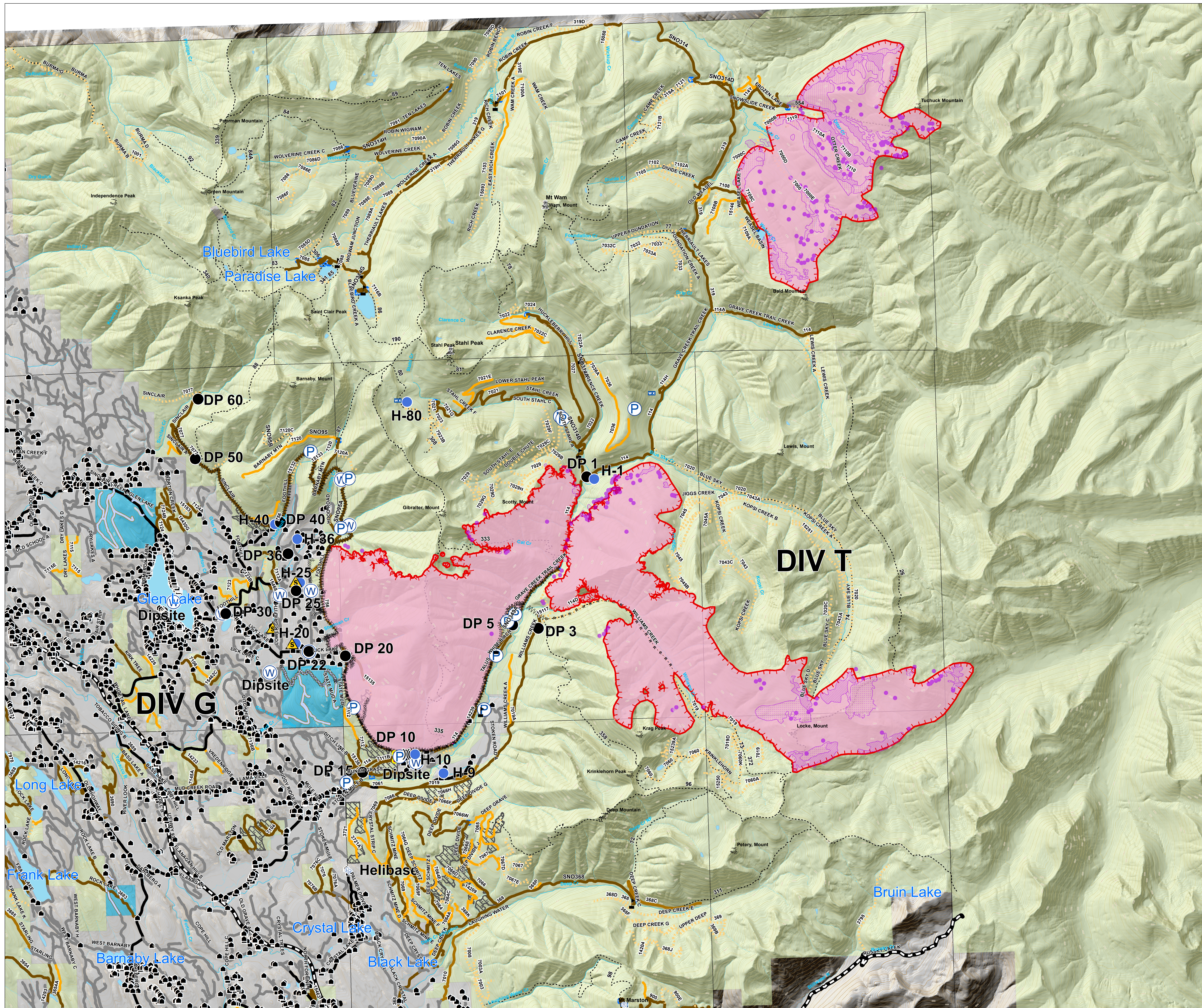


BRIEFING MAP

Gibraltar Ridge
MT-KNF-161
12,700 acres

Weasel
MT-KNF-236
3,900 acres

- County
- Local
- State
- State Lands
- Forest Roads
 - Open
 - Restricted
 - Barrired
 - Impassable
- Checkpoints
- Trails
- Trailheads
- Structures
- Peaks
- Campground
- Lake
- Major Stream
- Intermittent Stream
- Owner
 - FS
 - MT State
 - Private
- Drop Point
- Helibase
- Helispot
- Lookout
- Mobile Weather Unit
- Pump
- Repeater
- Safety Zone
- Water Source
- Value at Risk
- Division Break
- Uncontrolled Fire Edge
- Completed Dozer Line
- Completed Hand Line
- Road as Completed Line
- Line Break Completed
- Unknown
- Wildfire Daily Fire Perimeter
- Isolated Heat
- Scattered Heat
- Intense Heat



GPS flight 09/13/2017 at 1100
IR flight 09/13/2017 at 2026

