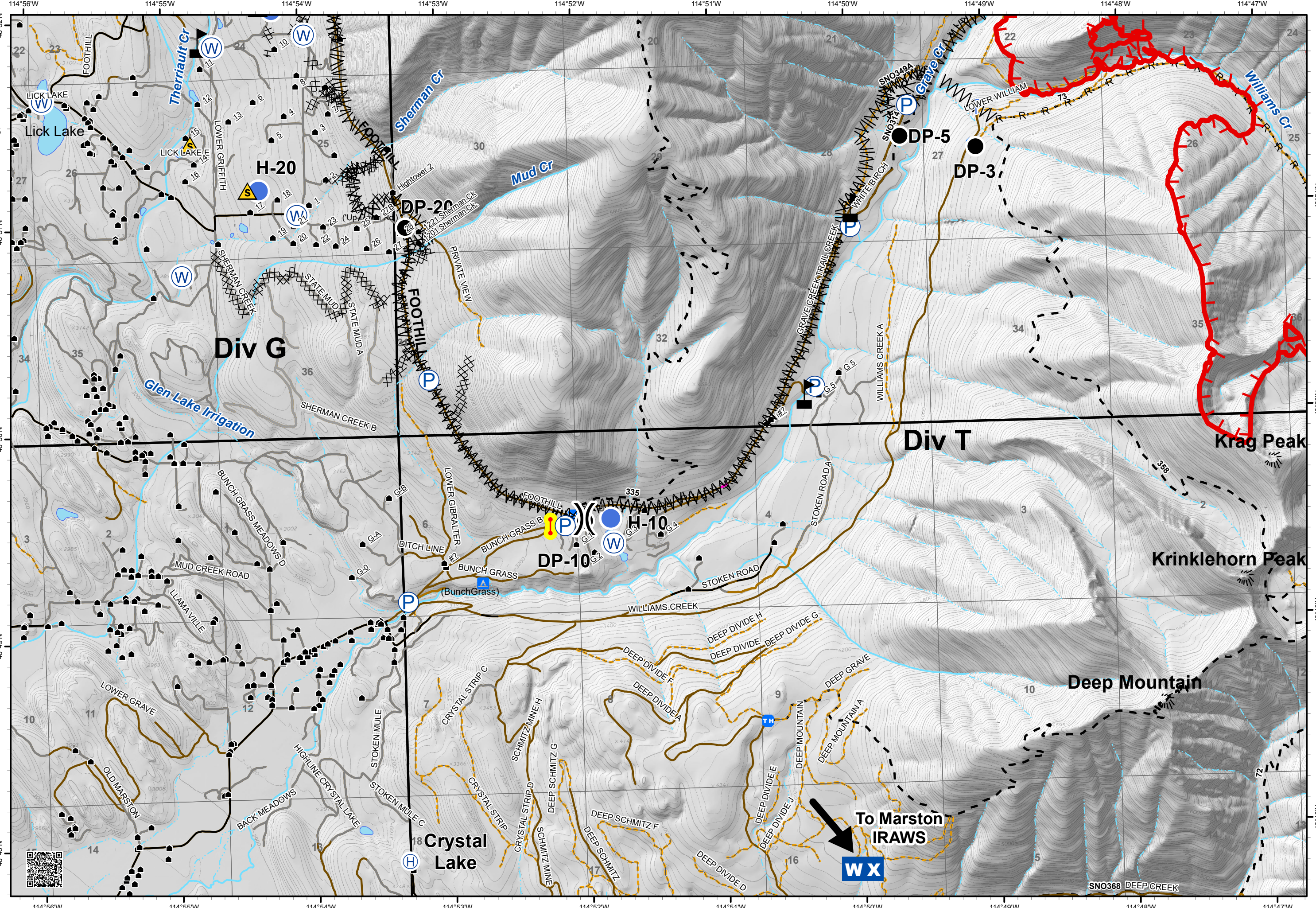
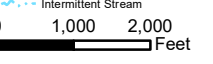


IAP

Gibraltar Ridge
MT-KNF-161
09/15/2017
Page 3 of 4
12,700 acres

- Drop Point
- ⊕ Helibase
- Helispot
- ⌵ Lookout
- Ⓟ Pump
- ⚠ Safety Zone
- Ⓜ Water Source
- ⚑ Value at Risk
- ⎓ Division Break

- 📍 Checkpoint
- 🏠 Developed Rec Sites
 - 🏕 Campground
- 🔥 Uncontrolled Fire Edge
- ⓧ Completed Dozer Line
- H - Completed Hand Line
- R - Road as Completed Line
- Ⓜ Line Break Completed
 - Unknown
- 🏠 Structures
- Ⓜ Trailheads
- Roads
 - County
 - Local, Private
 - State Lands
- Forest Roads
 - Open
 - Gated
 - Barrired/Impassible
- Trails
- 🏔 Peaks
- Major Stream
- Intermittent Stream



To Marston
IRAWS
WX

SNO368 DEEP CREEK