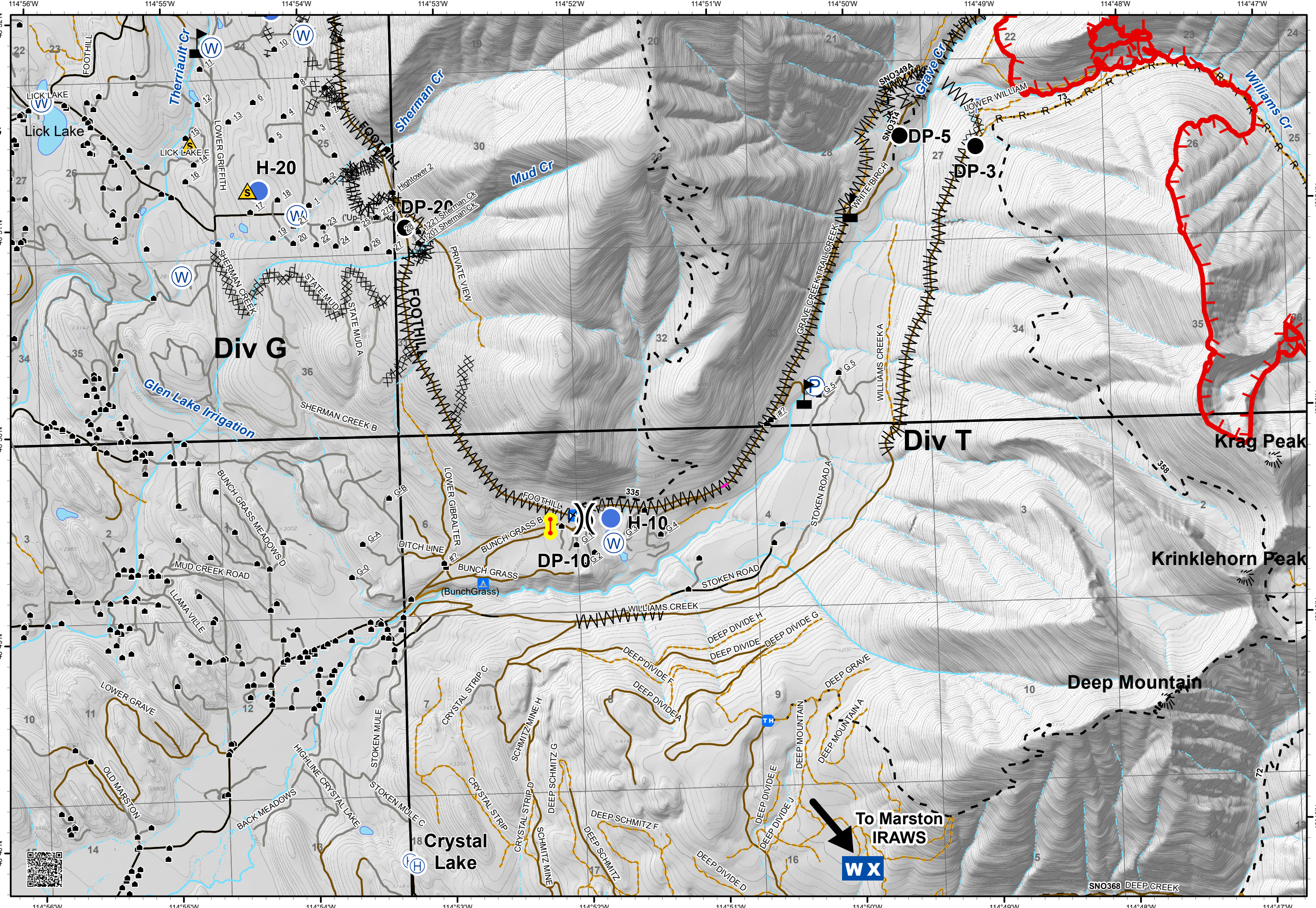


# IAP

Gibraltar Ridge  
MT-KNF-161  
09/16/2017  
Page 3 of 4  
12,725 acres

- Drop Point
- Ⓜ Helibase
- Helispot
- Ⓜ Lookout
- Ⓜ Pump
- ⚠ Safety Zone
- Ⓜ Water Source
- ⚠ Value at Risk
- Ⓜ Division Break

- 🔑 Checkpoint
- 📍 Developed Rec Sites
  - Ⓜ Campground
- 🔴 Uncontrolled Fire Edge
- Ⓜ Completed Dozer Line
- H - Completed Hand Line
- R - Road as Completed Line
- Ⓜ Line Break Completed
  - Ⓜ Unknown
- 🏠 Structures
- Ⓜ Trailheads
- Roads
  - Ⓜ County
  - Ⓜ Local, Private
  - Ⓜ State Lands
- Forest Roads
  - Ⓜ Open
  - Ⓜ Gated
  - Ⓜ Barrired/Impassible
- 👤 Trails
- 🏔 Peaks
- 🌊 Major Stream
- 🌊 Intermittent Stream



To Marston  
IRAWS  
**WX**

SNO368 DEEP CREEK