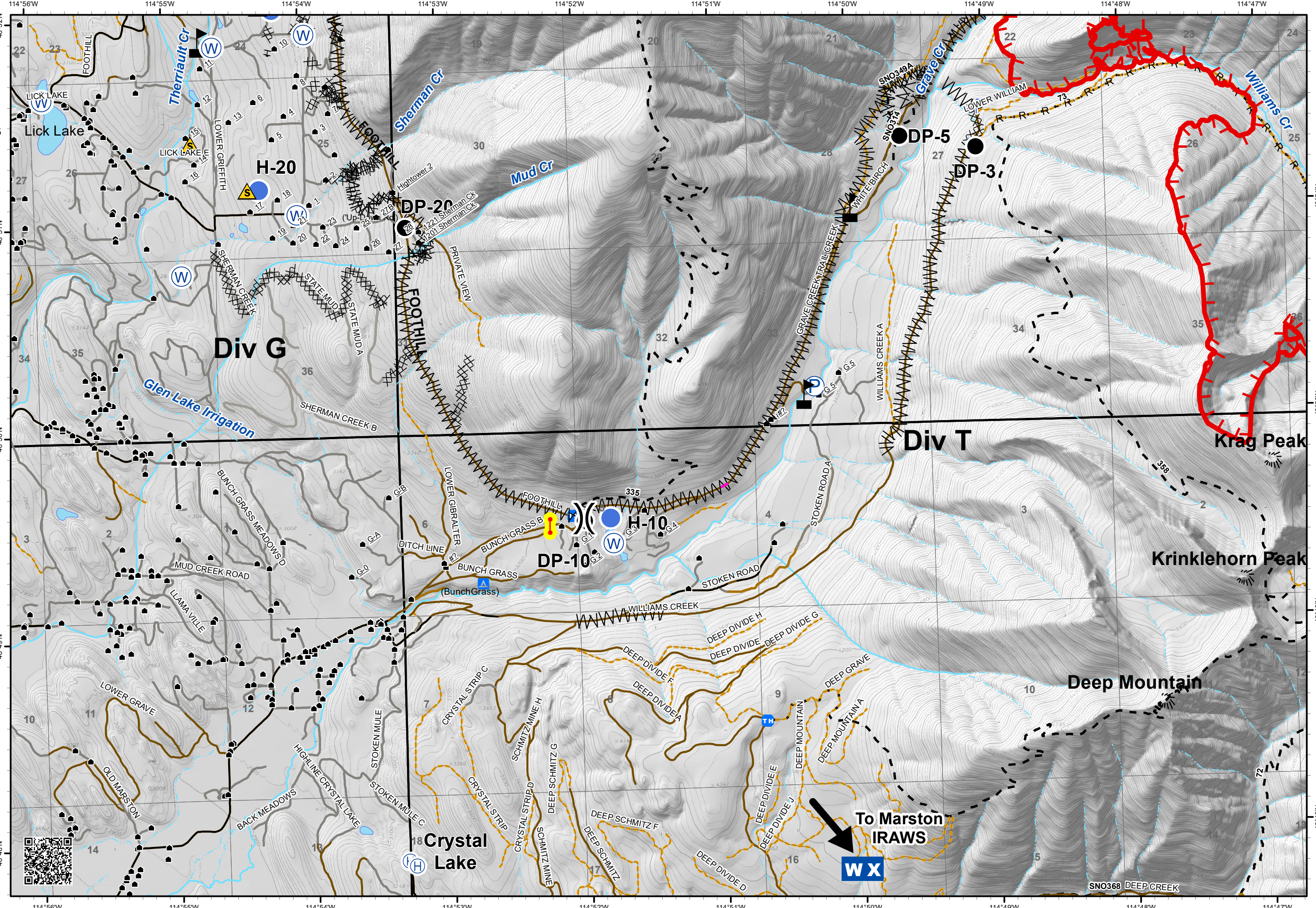


IAP

Gibraltar Ridge
MT-KNF-161
09/17/2017
Page 3 of 4
12,725 acres

- Drop Point
- Ⓜ Helibase
- Helispot
- Ⓜ Lookout
- Ⓜ Pump
- ⚠ Safety Zone
- Ⓜ Water Source
- ⚠ Value at Risk
- Ⓜ Division Break

- 🔑 Checkpoint
- Developed Rec Sites
 - Ⓜ Campground
 - 🔴 Uncontrolled Fire Edge
- Ⓜ Completed Dozer Line
- H - Completed Hand Line
- R - Road as Completed Line
- Ⓜ Line Break Completed
 - Ⓜ Unknown
 - Ⓜ Structures
 - Ⓜ Trailheads
- Roads
 - Ⓜ County
 - Ⓜ Local, Private
 - Ⓜ State Lands
- Forest Roads
 - Ⓜ Open
 - Ⓜ Gated
 - Ⓜ Barrired/Impassible
- Ⓜ Trails
- Ⓜ Peaks
- Ⓜ Major Stream
- Ⓜ Intermittent Stream



To Marston
IRAWS

WX

SNO368 DEEP CREEK