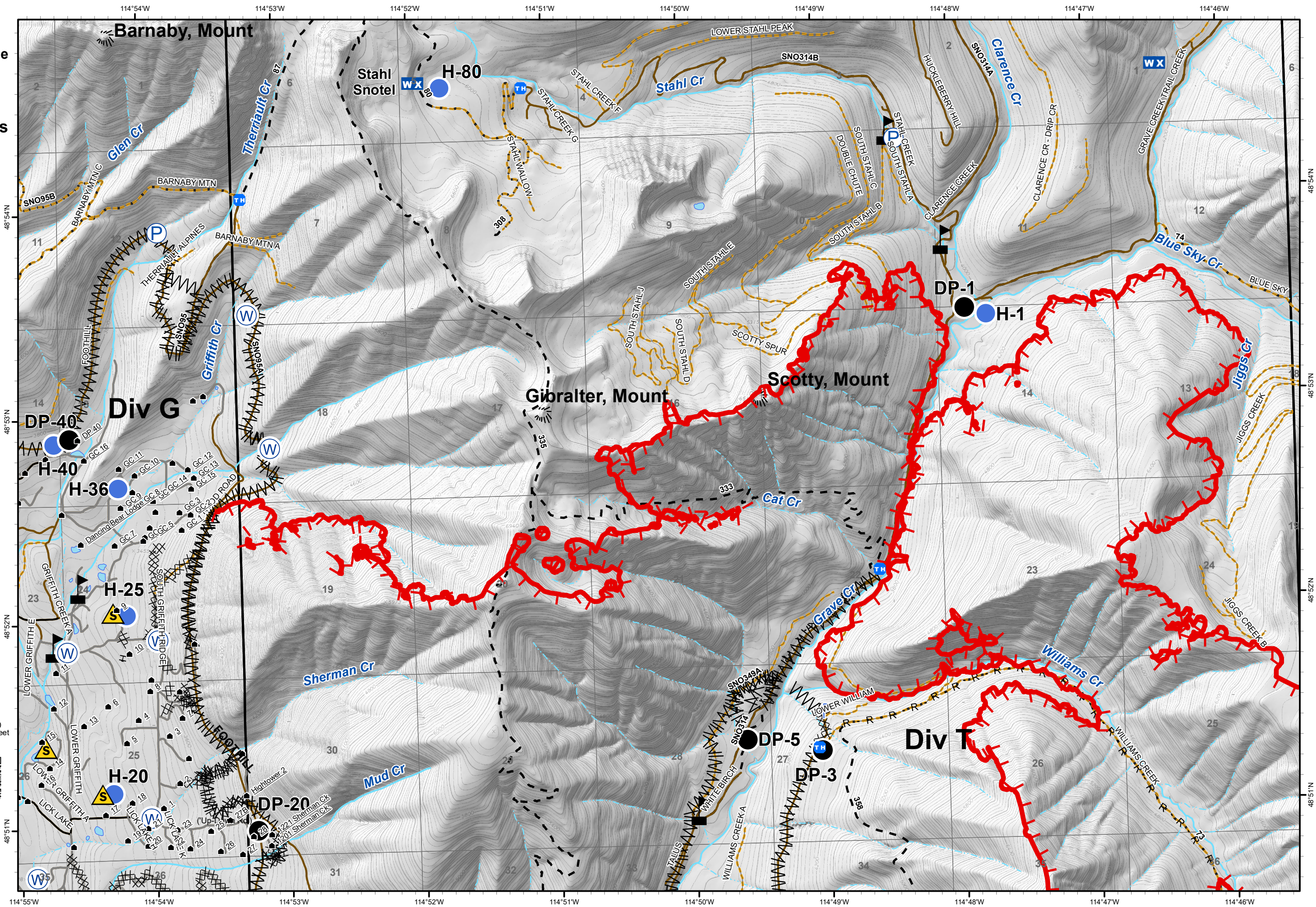
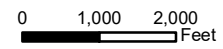


# IAP

Gibraltar Ridge  
MT-KNF-161  
09/19/2017  
Page 1 of 4  
12,938 acres

- TH Trailheads
- Structures
- Drop Point
- Hellspot
- Lookout
- WX Mobile Weather Unit
- P Pump
- S Safety Zone
- W Water Source
- Value at Risk
- Uncontrolled Fire Edge
- Completed Dozer Line
- H - Completed Hand Line
- R - Road as Completed Line
- M Line Break Completed
- Unknown
- Roads
  - County
  - Local, Private
  - State Lands
- Forest Roads
  - Open
  - Gated
  - Barrièred/Impassible
- Trails
- Peaks
- Major Stream
- Intermittent Stream



# IAP

Gibraltar Ridge  
MT-KNF-161  
09/19/2017  
Page 2 of 4  
12,938 acres

- Drop Point
- Helispot
- Lookout
- Ⓟ Pump
- ⬠ Photo Point
- Ⓜ Water Source
- ⚠ Value at Risk
- └─ Uncontrolled Fire Edge
- ▤ Completed Dozer Line
- R - Road as Completed Line
- ▬ Line Break Completed
- ▬ Unknown
- ▬ Structures
- Ⓜ Trailheads
- Roads
  - ▬ Local, Private
- Forest Roads
  - ▬ Open
  - ▬ Gated
  - ▬ Barrired/Impassible
- ▬ Trails
- Ⓜ Peaks
- ▬ Major Stream
- ▬ Intermittent Stream

0 1,000 2,000 Feet

