

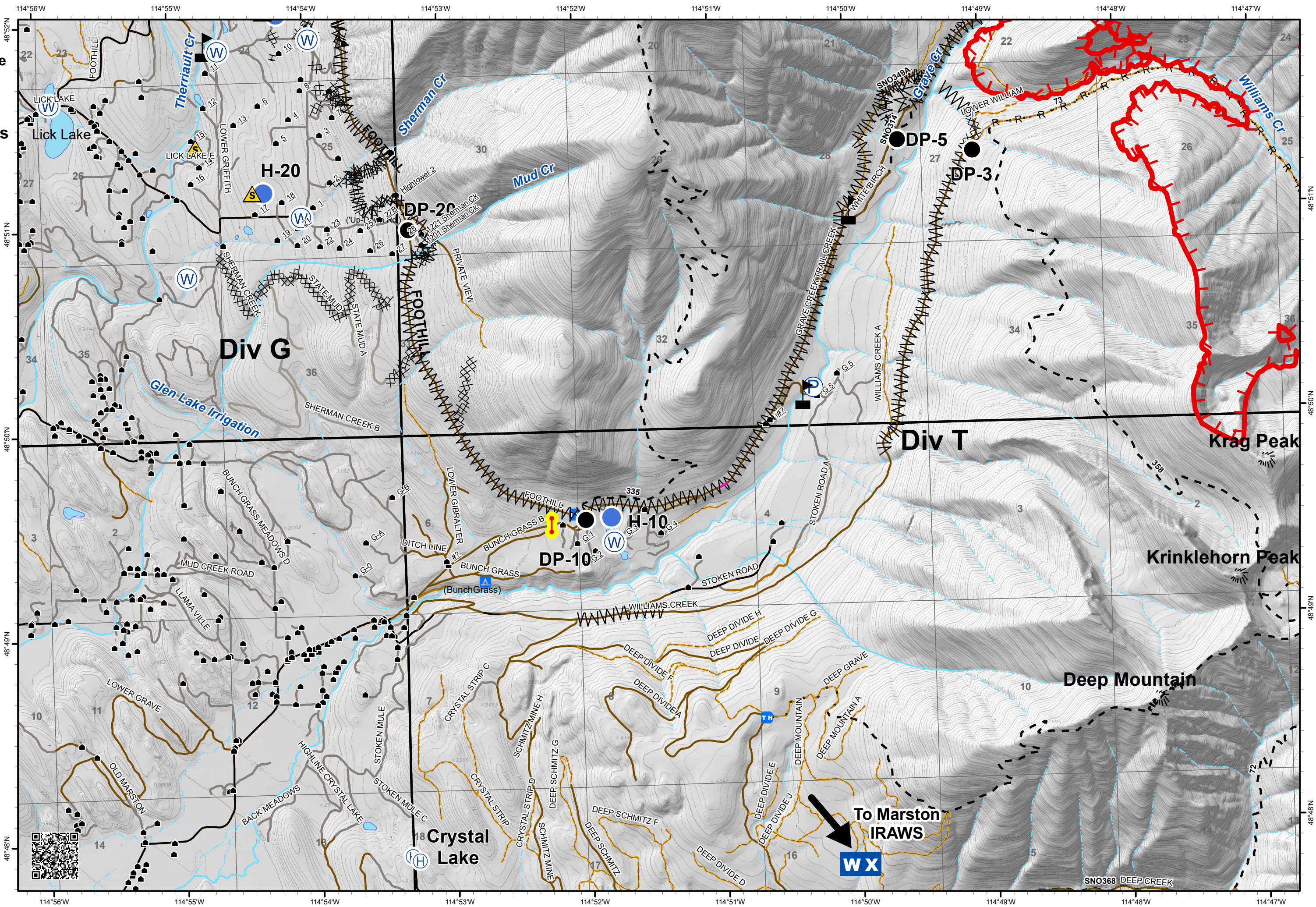
# IAP

Gibraltar Ridge  
MT-KNF-161  
09/19/2017  
Page 3 of 4  
12,938 acres

- Drop Point
- ⊕ Helibase
- Helispot
- ▭ Lookout
- ⊕ Pump
- ⚠ Safety Zone
- ⊕ Water Source
- ▭ Value at Risk

- 🔑 Checkpoint
- 🏠 Developed Rec Sites
- 🏕 Campground
- 🔥 Uncontrolled Fire Edge
- ⊗ Completed Dozer Line
- H - Completed Hand Line
- R - Road as Completed Line

- ⊗ Line Break Completed
- ⊗ Unknown
- ▭ Structures
- ⊕ Trailheads
- Roads
  - ▭ County
  - ▭ Local, Private
  - ▭ State Lands
- Forest Roads
  - ▭ Open
  - ▭ Gated
  - ▭ Barrired/Impassible
- ▭ Trails
- ⊕ Peaks
- ▭ Major Stream
- ▭ Intermittent Stream



# IAP

Gibraltar Ridge  
MT-KNF-161  
09/19/2017  
Page 4 of 4  
12,938 acres

- Feature Category (Line Type)
- R - Road as Completed Line
  - Uncontrolled Fire Edge
  - Forest Roads
    - Open
    - Gated
    - Barriered/Impassible
  - Trails
  - Peaks
  - Major Stream
  - Intermittent Stream

0 1,000 2,000 Feet

