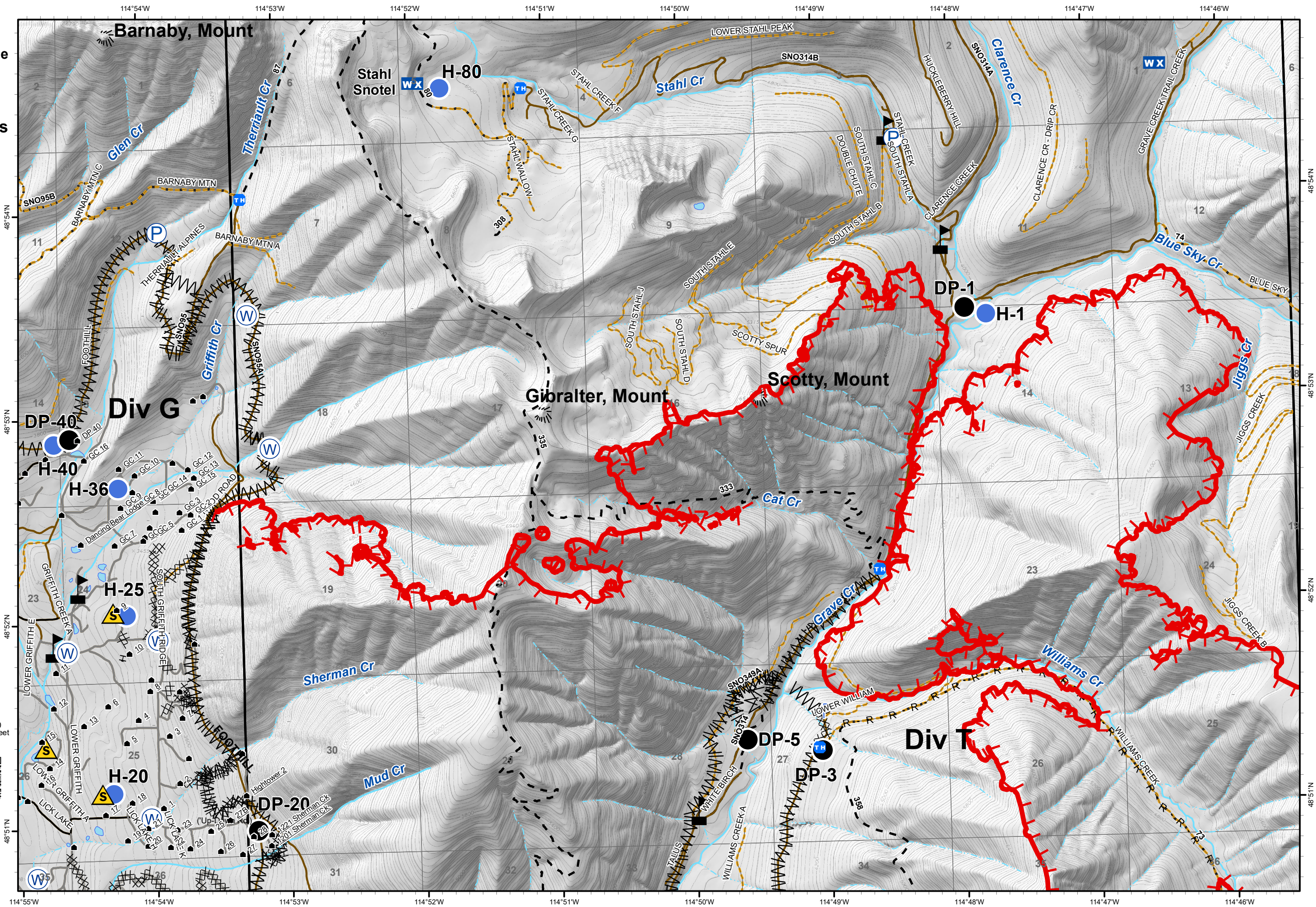
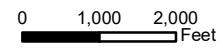


IAP

Gibraltar Ridge
MT-KNF-161
09/19/2017
Page 1 of 4
12,938 acres

- TH Trailheads
- Structures
- Drop Point
- Hellspot
- Lookout
- WX Mobile Weather Unit
- P Pump
- S Safety Zone
- W Water Source
- Value at Risk
- Uncontrolled Fire Edge
- Completed Dozer Line
- H - Completed Hand Line
- R - Road as Completed Line
- M Line Break Completed
- Unknown
- Roads
 - County
 - Local, Private
 - State Lands
- Forest Roads
 - Open
 - Gated
 - Barrièred/Impassible
- Trails
- Peaks
- Major Stream
- Intermittent Stream



114°55'W 114°54'W 114°53'W 114°52'W 114°51'W 114°50'W 114°49'W 114°48'W 114°47'W 114°46'W

114°54'W 114°53'W 114°52'W 114°51'W 114°50'W 114°49'W 114°48'W 114°47'W 114°46'W

48°51'N 48°52'N 48°53'N 48°54'N