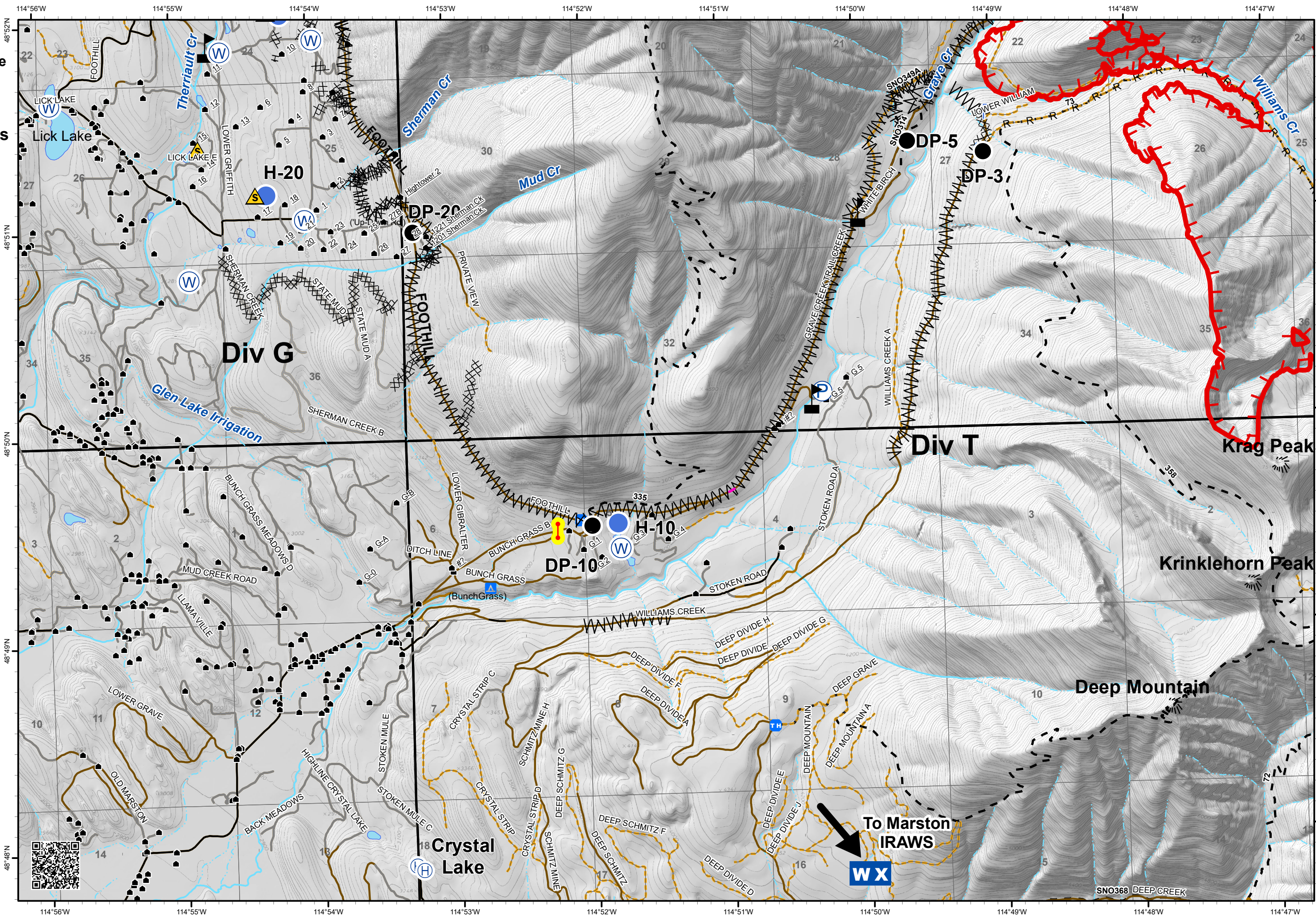


- Drop Point
- Helibase
- Helispot
- Lookout
- Pump
- Safety Zone
- Water Source
- Value at Risk
- Checkpoint
- Developed Rec Sites
  - Campground
  - Uncontrolled Fire Edge
- Completed Dozer Line
- Completed Hand Line
- Road as Completed Line
- Line Break Completed
- Unknown
- Structures
- Trailheads
- Roads
  - County
  - Local, Private
  - State Lands
- Forest Roads
  - Open
  - Gated
  - Barriered/Impassible
- Trails
- Peaks
- Major Stream
- Intermittent Stream

0 1,000 2,000 Feet



**To Marston**  
**IRAWS**  


SNO368 DEEP CREEK