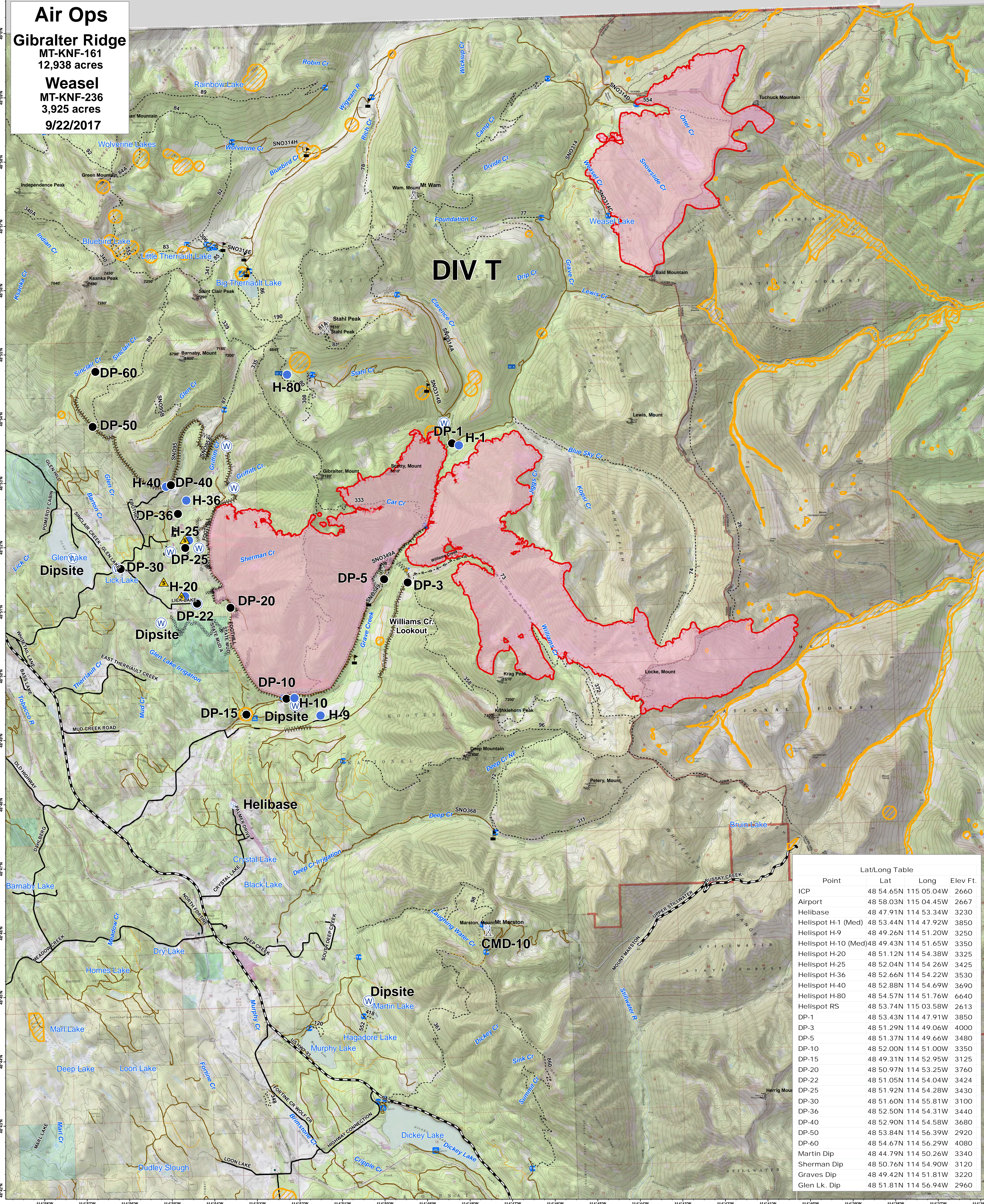


Air Ops

Gibraltar Ridge
MT-KNF-161
12,938 acres

Weasel
MT-KNF-236
3,925 acres
9/22/2017



DIV T

Lat/Long Table				
Point	Lat	Long	Elev Ft.	
ICP	48 54.65N	115 05.04W	2660	
Airport	48 58.03N	115 04.45W	2667	
Helibase	48 47.91N	114 53.34W	3230	
Helispot H-1 (Med)	48 53.44N	114 47.92W	3850	
Helispot H-9	48 49.26N	114 51.20W	3250	
Helispot H-10 (Med)	48 49.43N	114 51.65W	3350	
Helispot H-20	48 51.12N	114 54.38W	3325	
Helispot H-36	48 52.66N	114 54.22W	3530	
Helispot H-40	48 52.88N	114 54.69W	3690	
Helispot H-80	48 54.57N	114 51.76W	6640	
Helispot RS	48 53.74N	115 03.58W	2613	
DP-1	48 53.43N	114 47.91W	3850	
DP-3	48 51.29N	114 49.06W	4000	
DP-5	48 51.37N	114 49.66W	3480	
DP-10	48 52.00N	114 51.00W	3350	
DP-15	48 49.31N	114 52.95W	3125	
DP-20	48 50.97N	114 53.25W	3760	
DP-22	48 51.05N	114 54.04W	3424	
DP-25	48 51.92N	114 54.28W	3430	
DP-30	48 51.60N	114 55.81W	3100	
DP-36	48 52.50N	114 54.31W	3440	
DP-40	48 52.90N	114 54.58W	3680	
DP-50	48 53.84N	114 56.39W	2920	
DP-60	48 54.67N	114 56.29W	4080	
Martin Dip	48 44.79N	114 50.26W	3340	
Sherman Dip	48 50.76N	114 54.90W	3120	
Graves Dip	48 49.42N	114 51.81W	3220	
Glen Lk. Dip	48 51.81N	114 56.94W	2960	

Legend

- County Roads
- State Highways
- State Lands
- Forest Roads
- Open Trails
- Gated Trails
- Developed Rec Sites
- Campground
- Picnic Site
- Lookout/Cabin
- Trailheads
- Lookout
- Peaks
- Lookout Tower
- Lakes
- Major Stream
- Intermittent Stream
- OWNER FS
- OWNER MT State
- OWNER Private
- OWNER Plum Creek
- Division
- Drop Point
- Water Source
- Helispot
- Helibase
- Uncontrolled Fire Edge
- Completed Line
- Completed Dozer Line
- Line Break Completed
- Safety Zone
- Aerial Retardant Avoidance



VanBroeke's
Type 3 Team