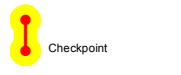


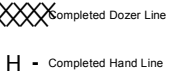
IAP

Gibraltar Ridge
MT-KNF-161
09/23/2017 -
09/26/2017
Page 3 of 4
12,938 acres

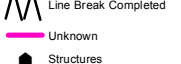
- Closure
- Drop Point
- Helispot
- Lookout
- Pump
- Photo Point
- Safety Zone
- Water Source
- Value at Risk



- Developed Rec Sites
- Campground
- Uncontrolled Fire Edge



- Completed Hand Line
- Road as Completed Line



- Unknown
- Structures
- Trailheads

- Roads
- County
- Local, Private
- State Lands

- Forest Roads
- Open
- Gated
- Barriered/Impassible
- Trails

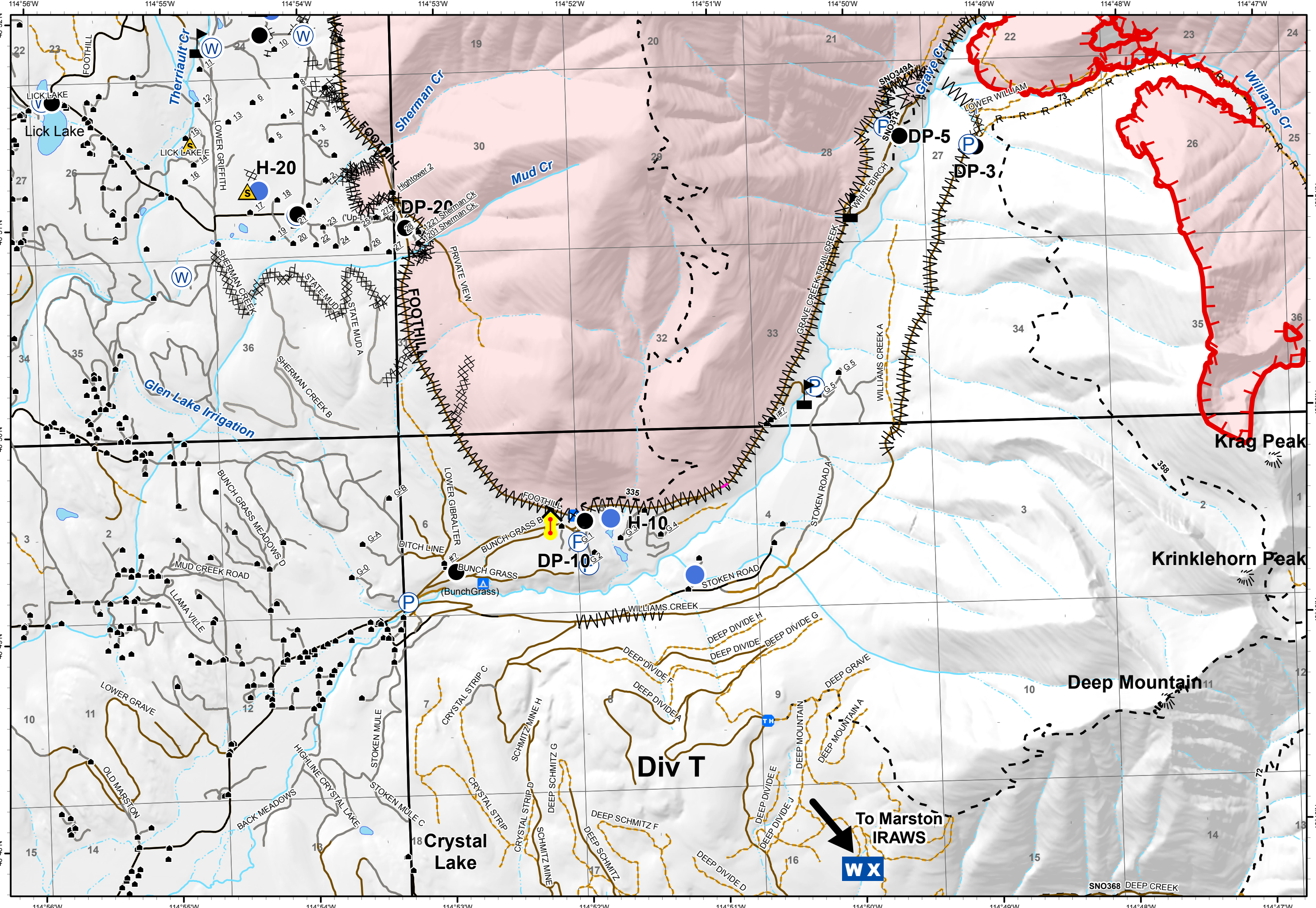
- Peaks

- Major Stream
- Intermittent Stream
- Fire Polygon

VanBroeke's
Type 3 Team



0 1,000 2,000
Feet



To Marston
IRAWS
WX