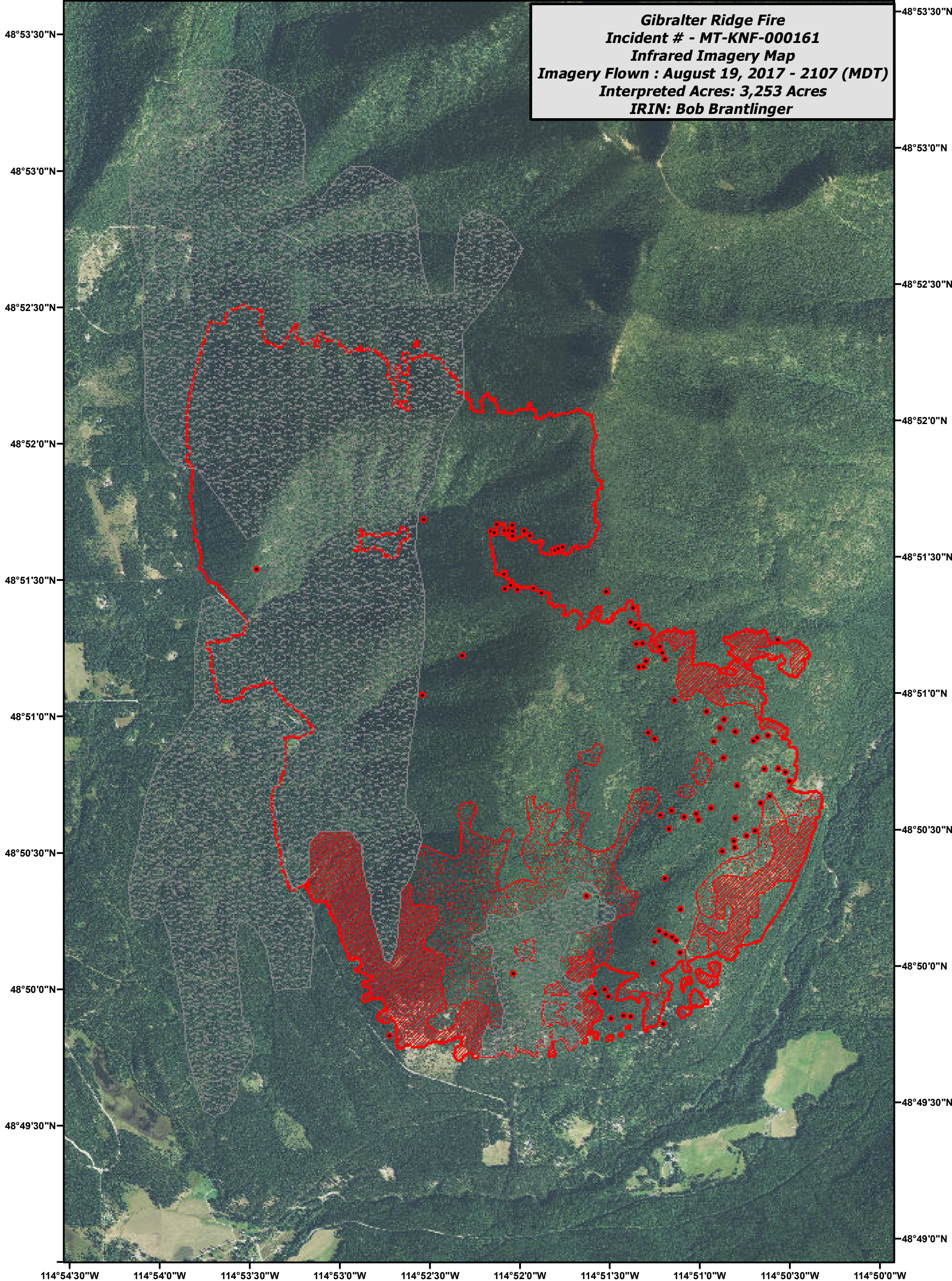


114°54'0"W 114°53'30"W 114°53'0"W 114°52'30"W 114°52'0"W 114°51'30"W 114°51'0"W 114°50'30"W 114°50'0"W




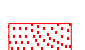



Gibraltar Ridge Fire
Incident # - MT-KNF-000161
Infrared Imagery Map
Imagery Flown : August 19, 2017 - 2107 (MDT)
Interpreted Acres: 3,253 Acres
IRIN: Bob Brantlinger

48°53'30"N
48°53'0"N
48°52'30"N
48°52'0"N
48°51'30"N
48°51'0"N
48°50'30"N
48°50'0"N
48°49'30"N


48°53'30"N
48°53'0"N
48°52'30"N
48°52'0"N
48°51'30"N
48°51'0"N
48°50'30"N
48°50'0"N
48°49'30"N

114°54'30"W 114°54'0"W 114°53'30"W 114°53'0"W 114°52'30"W 114°52'0"W 114°51'30"W 114°51'0"W 114°50'30"W 114°50'0"W

Legend

	Heat Perimeter		Scattered Heat Source
	Intense Heat		Isolated Heat Source
	Cloud Cover		

N



0 0.25 0.5 1 Miles

