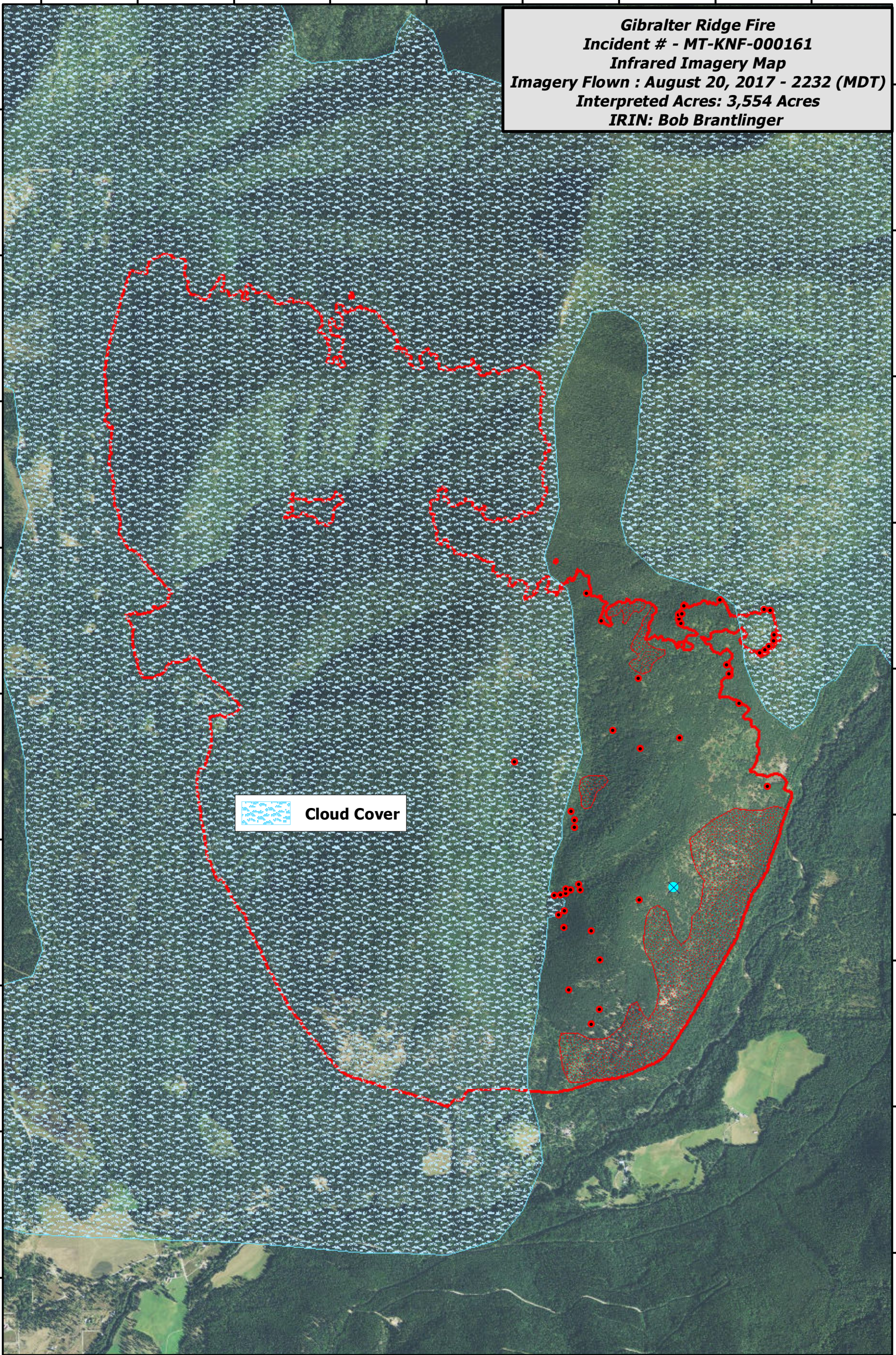


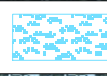
114°54'0"W 114°53'30"W 114°53'0"W 114°52'30"W 114°52'0"W 114°51'30"W 114°51'0"W 114°50'30"W 114°50'0"W

Gibraltar Ridge Fire
Incident # - MT-KNF-000161
Infrared Imagery Map
Imagery Flown : August 20, 2017 - 2232 (MDT)
Interpreted Acres: 3,554 Acres
IRIN: Bob Brantlinger

48°53'0"N
48°52'30"N
48°52'0"N
48°51'30"N
48°51'0"N
48°50'30"N
48°50'0"N
48°49'30"N
48°49'0"N

48°53'0"N
48°52'30"N
48°52'0"N
48°51'30"N
48°51'0"N
48°50'30"N
48°50'0"N
48°49'30"N
48°49'0"N



 **Cloud Cover**

Legend

-  **Heat Perimeter**
-  **Scattered Heat Source**
-  **Isolated Heat Source**

