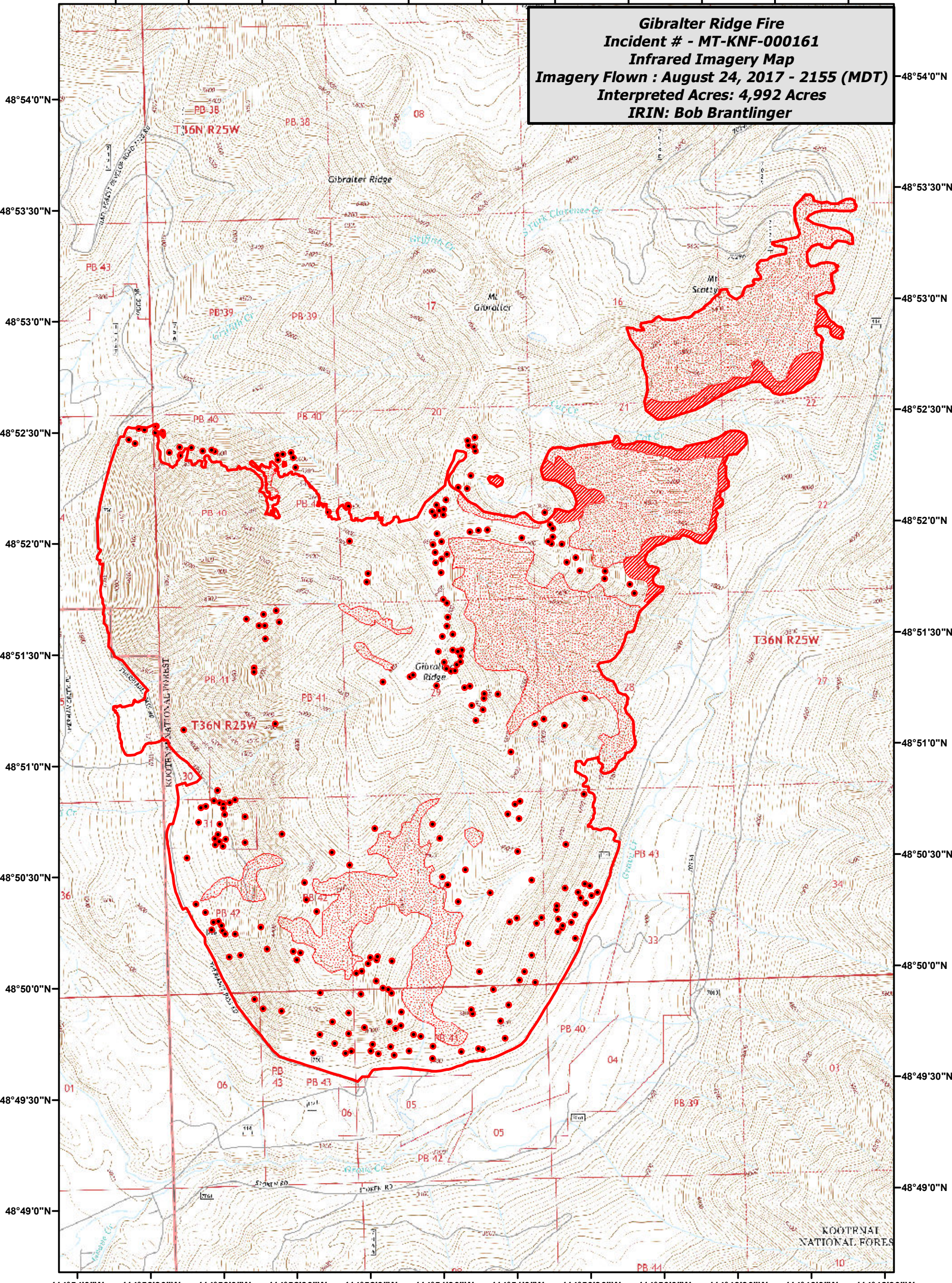






114°53'30"W 114°53'0"W 114°52'30"W 114°52'0"W 114°51'30"W 114°51'0"W 114°50'30"W 114°50'0"W 114°49'30"W 114°49'0"W 114°48'30"W

**Gibraltar Ridge Fire**  
**Incident # - MT-KNF-000161**  
**Infrared Imagery Map**  
**Imagery Flown : August 24, 2017 - 2155 (MDT)**  
**Interpreted Acres: 4,992 Acres**  
**IRIN: Bob Brantlinger**



**Legend**

-  Heat Perimeter
-  Intense Heat
-  Scattered Heat Source
-  Isolated Heat Source

