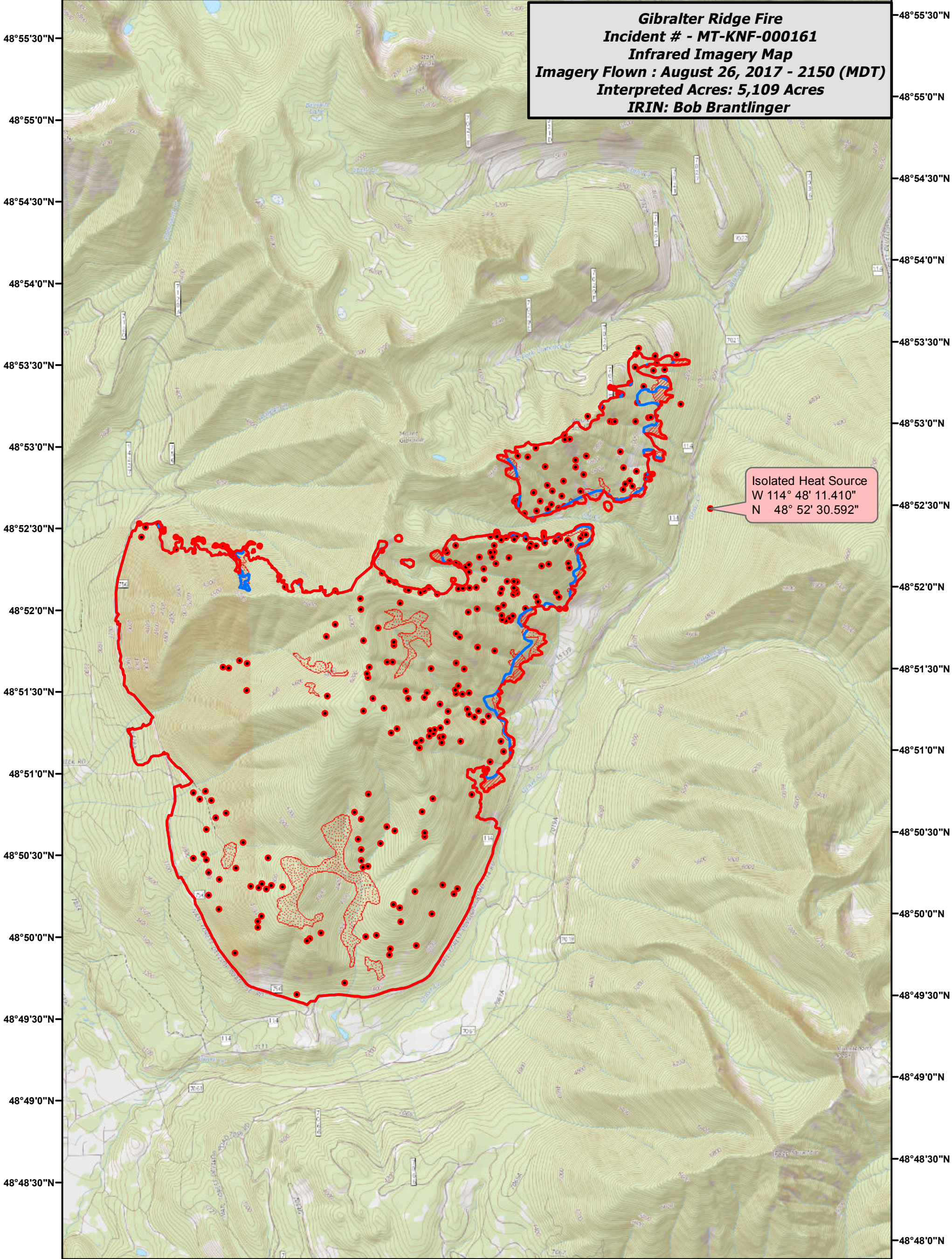






114°53'30"W 114°52'30"W 114°51'30"W 114°50'30"W 114°49'30"W 114°48'30"W 114°47'30"W 114°46'30"W

Gibraltar Ridge Fire
Incident # - MT-KNF-000161
Infrared Imagery Map
Imagery Flown : August 26, 2017 - 2150 (MDT)
Interpreted Acres: 5,109 Acres
IRIN: Bob Brantlinger



Isolated Heat Source
W 114° 48' 11.410"
N 48° 52' 30.592"

Legend

-  Heat Perimeter
-  Intense Heat
-  Scattered Heat Source
-  Isolated Heat Source



0 0.5 1 2 Miles

