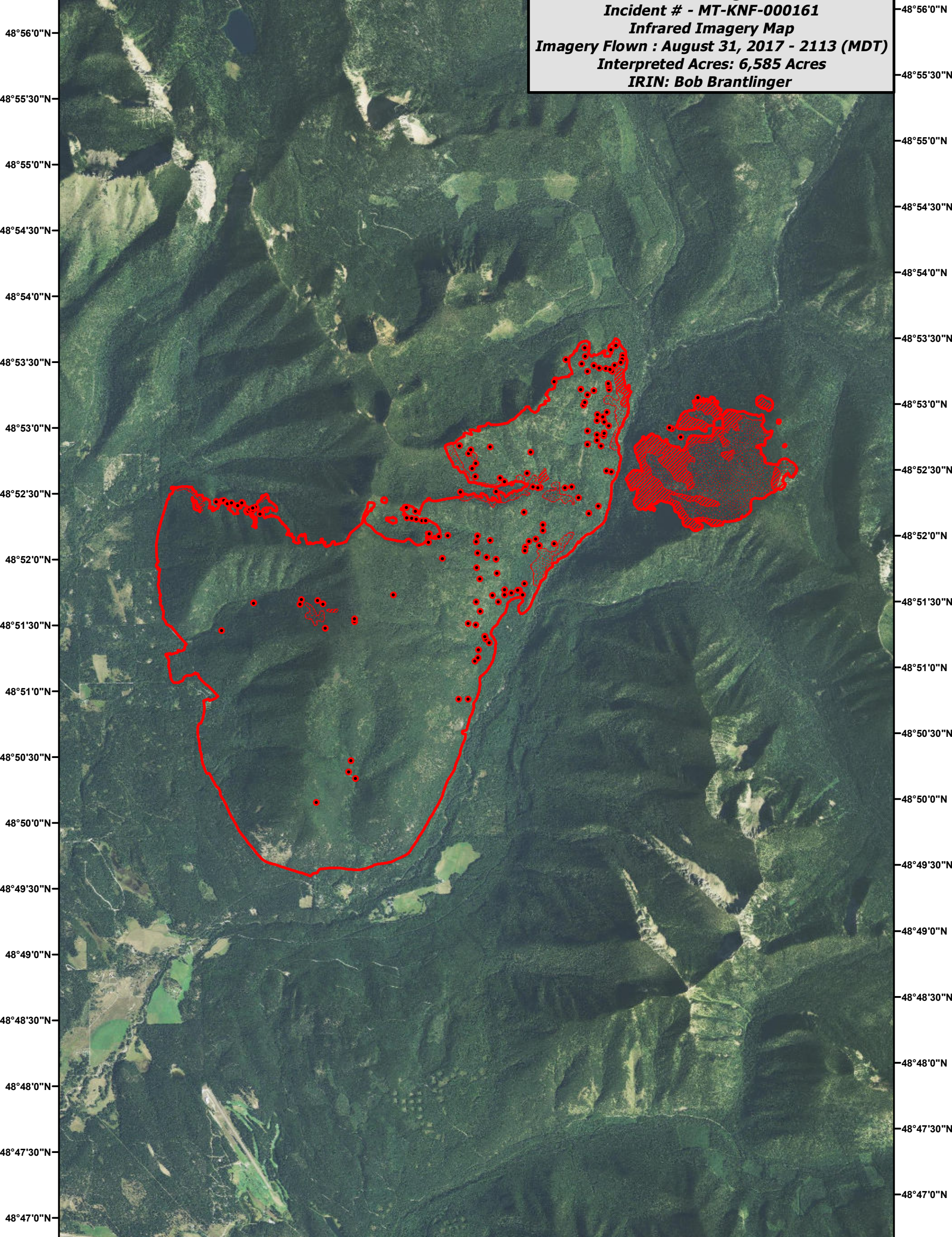

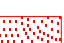
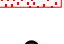



114°54'30"W 114°53'30"W 114°52'30"W 114°51'30"W 114°50'30"W 114°49'30"W 114°48'30"W 114°47'30"W 114°46'30"W 114°45'30"W

Gibraltar Ridge Fire
Incident # - MT-KNF-000161
Infrared Imagery Map
Imagery Flown : August 31, 2017 - 2113 (MDT)
Interpreted Acres: 6,585 Acres
IRIN: Bob Brantlinger



Legend

-  Heat Perimeter
-  Intense Heat
-  Scattered Heat Source
-  Isolated Heat Source

