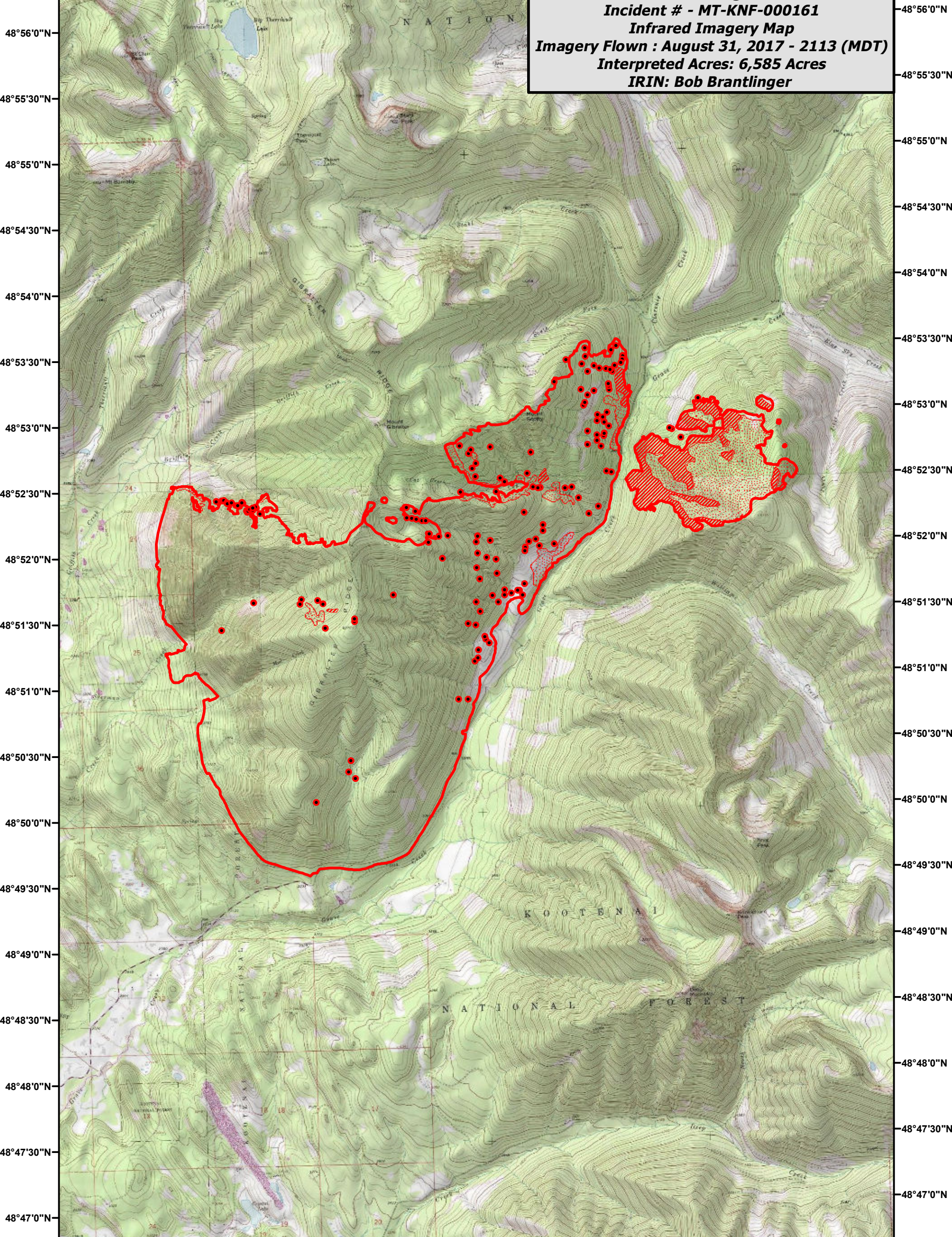

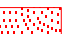




114°54'30"W 114°53'30"W 114°52'30"W 114°51'30"W 114°50'30"W 114°49'30"W 114°48'30"W 114°47'30"W 114°46'30"W 114°45'30"W

**Gibraltar Ridge Fire**  
**Incident # - MT-KNF-000161**  
**Infrared Imagery Map**  
**Imagery Flown : August 31, 2017 - 2113 (MDT)**  
**Interpreted Acres: 6,585 Acres**  
**IRIN: Bob Brantlinger**



- Legend**
-  Heat Perimeter
  -  Scattered Heat Source
  -  Intense Heat
  -  Isolated Heat Source

